



International
Labour
Organization

► APPROVALS

► ILO Approvals for Development Cooperation

Annual Report 2020

Trends in ILO approvals in 2020

Despite marking the start of the COVID-19 pandemic, 2020 also illustrated the strength of the ILO's partnerships. Thanks to the continued support of its funding partners, the ILO registered US\$ 356.6 million in total approvals¹ in 2020, making it the third largest year for approvals in the past decade. In addition, the ILO received US\$ 17.6 million in Regular Budget Supplementary Account (RBSA) funds, or voluntary core funding, for 2020.

The ten largest voluntary funding contributors* in 2020

Development Partner	Budget Approved (US\$)
European Commission (EC)	\$93.3 million
United States	\$43.1 million
Germany	\$36.2 million
United Nations	\$34.0 million
Public-Private Partnerships (PPPs)	\$21.8 million
the Netherlands	\$18.7 million
Norway	\$15.4 million
Sweden	\$15.3 million
Domestic Funding	\$13.7 million
Switzerland	\$10.2 million

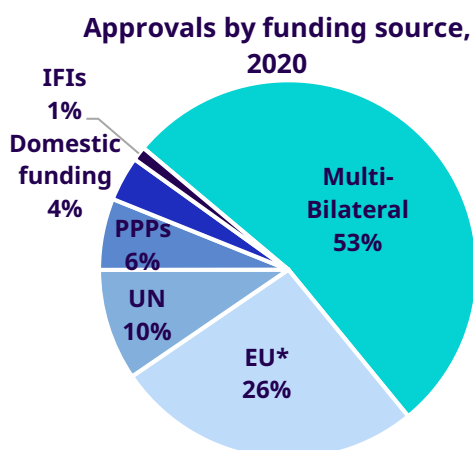
*List does not include RBSA contributions.

The 2021 outlook for levels of Official Development Assistance (ODA) and new approvals for the ILO is uncertain as many key resource partner member States face fiscal and budget challenges related to COVID-19 response and recovery costs at home. It is also likely that scarce funding will be directed increasingly towards humanitarian assistance. At the same time, it is important to note that the ILO increasingly positions itself as a key player on the humanitarian- development nexus, ensuring that immediate COVID-19 recovery support paves the way for longer-term and human centred policy solutions for decent work.

Approvals highlights in 2020

- The commitment of funding partners to supporting the ILO's response to the COVID-19 pandemic was a defining feature of 2020. This took the form of new contributions notably from partners like Germany, Norway and the European Union as well as funding from the UN MPTF COVID-19 Response and Recovery Fund. These approvals supported new activities directly related to the response, such as social protection, including cash transfers, as well as promoting occupational safety and health (OSH), business continuity and the protection of livelihoods. Funding partners also showed great flexibility in repurposing their contributions from earlier years to support national COVID-19 responses.
- Average annual approvals have steadily increased since 2010. Total approvals for the period 2010-2013, on average, totalled US\$238.0 million per year. For the period 2017-20, average annual approvals reached US\$ 374.4 million thanks to record-setting years in 2017 and 2019.
- The European Commission accounted for the largest share of the ILO's approvals in 2020. Its new approvals included a focus on ending child labour in seasonal agriculture in Turkey as well as meeting the decent work needs of refugees and host communities around Syria and those of workers in different global supply chains.
- For multi-bilateral approvals in 2020: 23.0% came from the United States, 19.1% from Germany, 9.9% from the Netherlands, 8.1% from Norway and 8.1% from Sweden. Key areas funded include the fight against child labour and forced labour as well as employment promotion, especially employment-intensive investments, and improving labour standards in global supply chains.

¹ 2020 Approvals are the amounts for which the ILO and its funding partners signed an agreement in 2020.

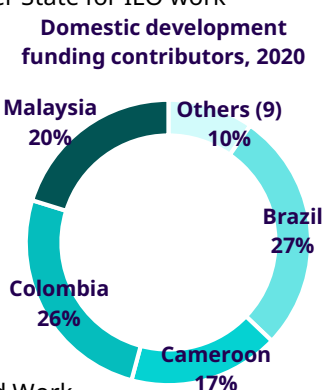


- An important funding source for resource diversification, approvals from non-OECD/DAC countries increased in 2020, with approvals of US\$ 1million from China, US\$ 655,000 from Brazil, US\$ 500,000 from Kuwait and US\$ 327,000 from Panama.

- Accounting for 53 per cent of total approvals in 2020, multi-bilateral development partners remained the largest source of voluntary funding, buoyed by large approvals from the United States and Germany. This was followed by the European Commission (26%) which channels EU member states contributions from the EC's budget. The United Nations (10%), PPPs (6%) and Domestic

Development Funding (4%) round out the top five sources of funding for 2020 approvals.

- UN approvals reached US\$ 34.0 million in 2020 – more than US\$ 4 million above the average recorded over the past four years. The UN portfolio is marked by an increasing number of inter-agency projects and Joint Programmes funded by Multi Partner Trust Funds (MPTFs). Activities are weighted toward supporting COVID-19 response initiatives and include several global programmes that have a thematic focus on employment promotion (25.6% of UN funding), enterprise promotion (21.0%) and work quality issues (20.4%). This has included approvals from UNAIDS for the HIV/AIDS at the workplace programme, MPTF funding for social protection and UNICEF funding and cooperation through Generation Unlimited.
- Public Private Partnership approvals totalled US\$21.8 million in 2020, which marked a 40 per cent increase from 2019. This included a significant increase in support from Foundations, particularly the Bill and Melinda Gates Foundation , focused on digital labour and labour informality research, as well as important private sector contributions for areas of work including ending child labour and supporting compliance with international labour laws in global textile supply chains through the Better Work Programme.
- Domestic Development Funding refers to funding by the government of a member State for ILO work in the country. This also plays an important role in ILO's voluntary funding portfolio, accounting for more than US\$13 million of approvals, or about 4% of total funding in 2020. This was thanks largely to contributions from Brazil, Cameroon, Colombia and Malaysia. This funding focused on supporting employment intensive investment and skills training as well as technical capacity building in fields ranging from social protection to improving the application of labour standards.
- Approvals in 2020 increased for ending child labour ahead of the UN International Year for the Elimination of Child Labour, which, alongside Better Work and OSH promotion, attracted the largest proportion of approvals (32.5%). Employment promotion (24.5%), Enterprises (13.7%), Social Protection (11.9%) and Work quality (8.4%) rounded out the top five areas of work. In the face of particularly strong interest as part of COVID-19 response, funding contributions for social protection activities increased by more than 25%.
- In 2020, 17.1% of total approvals were for Europe and 16% for Africa and 22%, followed by Asia (15.8%), the Arab States (9.7%) and the Americas (5.9%). In line with the increase in larger, multi-regional programmes observed in recent years, a significant percentage of approvals were also for interregional or global projects (35.5%). While figures for the Americas aligned with the same trends observed in 2019, approvals for Europe increased by 42% and 34% in the Arab States. In contrast, following record setting approvals in 2019 during which both benefited from the approval of large, multi-year, regional programmes, contributions for the Africa and Asia regions declined from close to



*EU category includes contributions from Other inter-governmental organizations (OIGO). These account for less than 1% of the category. These partners include: the Commission for Labor Cooperation/North American Agreement on Labor Cooperation, the Common Fund for Commodities and the Organisation for Economic Co-operation and Development (OECD).

US\$100 million per region in 2019 to just over US\$ 55 million in 2020. These contribution amounts are closer to rates observed in previous years but fall below the four-year average of approvals for these regions.

- ▶ Of the total of new approvals in 2020, 38.8% were financially managed by headquarters and 61.1% by the field. This distribution represents a five percentage point increase for the field compared to 2019.
- ▶ In the Africa region, activities are mainly focused on employment promotion and ending child labour and forced labour as well as promoting OSH.
- ▶ In the Americas region, projects focus on ending child labour and forced labour and promoting OSH. Employment promotion was also a regional priority.
- ▶ In Europe and Central Asia, there is a strong focus on employment promotion and supporting sustainable enterprise development. In Turkey, a multi-year, US\$33 million, project supported by the EU will work to eliminate child labour in seasonal agriculture.
- ▶ In Asia and the Pacific, activities are mainly focused on work quality issues, including promoting OSH and ending child labour and forced labour as well as supporting safe and productive labour migration
- ▶ In the Arab States region, projects focus on promoting employment opportunities through employment-intensive investment and skills development, with such initiatives receiving more than 50% of new funds in 2020. Promoting OSH and addressing the decent work needs of refugees and host communities were also prominent focus areas.

The following tables provide more detailed information about total voluntary non-core funding approvals in 2020. Many of the tables also provide a comparative overview of approval data for the period 2017-2020. Information is presented by source of funds, partner category, technical field, geographical distribution, administrative responsibility, and a combination of all of the above. For information about voluntary core funding contributions, please refer to the information available at [this link](#).

Table of contents*

TABLE 1	<u>Source of funds</u>
TABLE 2a	<u>By development partner category</u>
TABLE 2b	<u>By development partner category (alphabetical)</u>
TABLE 3	<u>By technical field</u>
TABLE 4	<u>By region</u>
TABLE 5	<u>By administrative responsibility</u>
TABLE 6	<u>By source of funds and technical field</u>
TABLE 7	<u>By region and technical field</u>
TABLE 8	<u>Multilateral by region and technical field</u>
TABLE 9	<u>Domestic development funding by region and field</u>
TABLE 10	<u>PPP and social partner by region and technical field</u>
TABLE 11	<u>IFIs (banks) by region and technical field</u>
TABLE 12	<u>UN system by region and technical field</u>
TABLE 13	<u>Other OIGO (EC) by region and technical field</u>

*At this time, a breakdown of funding by ILO Policy Outcome is not available until the project becomes financially active, so it is not reflected in the Approvals report. Data on annual allocations will be available by Policy Outcome in the forthcoming Annual expenditure report.

Table 1: Approvals by source of funds (2017-2020) (US\$'000)

Source of Funds	2017		2018		2019		2020		Average 2017-2020	
	\$	% share	\$	% share	\$	% share	\$	% share	\$	% share
Multi-bilateral development partners	158,811	43.1	236,180	75.4	301,239	65.6	188,573	52.9	221,201	59.1
European Commission and other inter-governmental organizations ⁽¹⁾	97,041	26.3	17,036	5.4	89,764	19.6	94,213	26.4	74,514	19.9
United Nations ⁽²⁾	34,353	9.3	28,697	9.2	25,963	5.7	34,026	9.5	30,760	8.2
Public-private partnerships ⁽³⁾	20,414	5.5	16,704	5.3	12,673	2.8	21,820	6.1	17,903	4.8
Domestic development funding	47,697	12.9	11,574	3.7	27,123	5.9	13,663	3.8	25,014	6.7
International financial institutions (Banks)	10,345	2.8	3,130	1.0	2,259	0.5	4,294	1.2	5,007	1.3
Total	368,661	100.0	313,320	100.0	459,021	100.0	356,588	100.0	374,397	100.0

⁽¹⁾ Includes the European Commission, AGFUND, CFC, Commission for Labor Cooperation and the OECD.

⁽²⁾ Includes projects financed through Multi Partner Trust Funds (MPTFs), Joint Programmes (JPs) and One UN Funds.

⁽³⁾ Includes Foundations, Public Institutions, Private Sector Initiatives and Others.

Table 2a: Approvals by development partner category (2017-2020) (\$'000)

Development partner	2017	2018	2019	2020	2017-2020		
					Total	Average	% share
Multi-bilateral development partners	158,811	236,180	301,239	188,573	884,803	221,201	59.1
United States	38,385	23,544	33,038	43,511	138,478	34,619	9.2
Germany	16,471	59,171	45,516	36,152	157,310	39,327	10.5
Netherlands	7,818	51,693	95,654	18,687	173,852	43,463	11.6
Norway	16,197	16,588	13,191	15,351	61,327	15,332	4.1
Sweden	7,481	15,842	13,015	15,263	51,601	12,900	3.4
Switzerland	15,669	16,190	14,957	10,150	56,967	14,242	3.8
Japan	4,782	4,835	7,851	7,250	24,718	6,179	1.7
Canada	2,075	6,689	1,707	5,405	15,876	3,969	1.1
Multi				4,615	4,615	1,154	0.3
Australia	18,600	754	12,455	3,598	35,406	8,852	2.4
Republic of Korea	1,000	1,026	2,315	3,979	8,321	2,080	0.6
United Kingdom	7,210	20,804	38,797	3,446	70,258	17,564	4.7
Italy	2,325	4,484	3,192	2,932	12,933	3,233	0.9
Ireland	2,370	1,818	2,231	2,339	8,758	2,189	0.6
Belgium				2,324	2,324	581	0.2
France	95	3,982	7,163	2,166	13,406	3,351	0.9
Austria				2,115	2,115	529	0.1
New Zealand				1,976	1,976	494	0.1
Luxembourg	5,399	148	563	1,181	7,290	1,823	0.5
Flanders	1,022	1,111		1,053	3,187	797	0.2
Spain	2,791	1,278	754	1,017	5,840	1,460	0.4
China	200	1,000	1,000	1,000	3,200	800	0.2
Finland	955	1,301	922	925	4,103	1,026	0.3
Brazil			31	655	686	172	0.0
Denmark	6,098	3,049	3,195	610	12,952	3,238	0.9
Kuwait	500	500	500	500	2,000	500	0.1
Panama	327	327	327	327	1,308	327	0.1
Czech Republic	41	44	43	45	174	43	0.0
Portugal			2,822		2,822	705	0.2
Qatar	1,000				1,000	250	0.1
Other inter-governmental organizations (OIGO)	97,041	17,036	89,764	94,213	298,054	74,513	19.9
European Commission	96,628	16,896	89,717	93,335	296,576	74,144	19.8
Commission for Labor Cooperation/North American Agreement on Labor Cooperation				820	820	205	0.1
OECD	314	140		49	503	126	0.0
Common Fund for Commodities				9	9	2	0.0
AGFUND	100		46		146	37	0.0
UN organizations and agencies	34,353	29,359	25,963	34,026	123,701	30,925	8.3
JPs/ MPTFs - UNDP	22,591	10,751	8,439	19,315	61,096	15,274	4.1
UNICEF	5,267	4,027	3,189	3,725	16,209	4,052	1.1
IOM		3,250	877	2,978	7,105	1,776	0.5
UNAIDS	2,725	2,000	4,859	1,915	11,499	2,875	0.8
UNWOMEN	380	6,130	669	1,531	8,710	2,178	0.6
UNHCR	354	542	278	1,280	2,455	614	0.2
UNFIP	600		300	1,188	2,088	522	0.1
IFAD		663	2,265	758	3,687	922	0.2
UNDP	134	10	1,032	628	1,804	451	0.1
UNOPS	1,756	107	1,497	560	3,920	980	0.3
UNESCO				246	246	61	0.0
UNHSF		880	342	169	1,391	348	0.1
UNIDO		225		100	325	81	0.0
FAO	54	66		30	150	37	0.0
UNCDF			342	-398	-56	-14	0.0
UNDESA			1,119		1,119	280	0.1
UNECE		35			35	9	0.0
UNEP		216			216	54	0.0
UNOCHA		297			297	74	0.0
UNOCT			230		230	58	0.0
UNRWA	492				492	123	0.0
UNV		160	503		663	166	0.0
WHO			21		21	5	0.0
Domestic development funding	47,697	11,574	27,123	13,663	100,057	25,014	6.7

Development partner	2017	2018	2019	2020	2017-2020		
					Total	Average	% share
Public-private partnerships*	20,414	16,704	12,673	21,820	71,610	17,903	4.8
Private Sector	17,579	7,230	8,407	9,361	42,578	10,644	2.8
Foundation	1,424	6,764	2,467	9,213	19,867	4,967	1.3
NGO				2,056	2,056	514	0.1
Other non-state actor	1,411	2,710	1,799	970	6,890	1,722	0.5
Academic, Training, Research				200	200	50	0.0
Social partner - Employers' association				20	20	5	0.0
International financial institutions (Banks)	10,345	2,467	2,259	4,294	19,365	4,841	1.3
African Development Bank	9,545		1,000	3,241	13,786	3,446	0.9
World Bank	420	2,467	1,259	1,053	5,199	1,300	0.3
Islamic Development Bank	380				380	95	0.0
Total	368,661	313,320	459,021	356,588	1,497,590	374,397	100.0

* The categories for PPPs have been aligned to the UN Data Cube standard as of 2020 reporting. Previous years used only the categories Private sector, Foundation and others.

Table 2b: Approvals by development partner category (2017-2020) (\$'000)

Development partner	2017	2018	2019	2020	2017-2020		
					Total	Average	% share
Multi-bilateral partners	158,811	236,180	301,239	188,573	884,803	221,201	59.1
Australia	18,600	754	12,455	3,598	35,406	8,852	2.4
Austria				2,115	2,115	529	0.1
Belgium				2,324	2,324	581	0.2
Brazil			31	655	686	172	0.0
Canada	2,075	6,689	1,707	5,405	15,876	3,969	1.1
China	200	1,000	1,000	1,000	3,200	800	0.2
Czech Republic	41	44	43	45	173	43	0.0
Denmark	6,098	3,049	3,195	610	12,952	3,238	0.9
Finland	955	1,301	922	925	4,103	1,026	0.3
Flanders	1,022	1,111		1,053	3,186	797	0.2
France	95	3,982	7,163	2,166	13,406	3,351	0.9
Germany	16,471	59,171	45,516	36,152	157,310	39,327	10.5
Ireland	2,370	1,818	2,231	2,339	8,758	2,189	0.6
Italy	2,325	4,484	3,192	2,932	12,933	3,233	0.9
Japan	4,782	4,835	7,851	7,250	24,718	6,179	1.7
Kuwait	500	500	500	500	2,000	500	0.1
Luxembourg	5,399	148	563	1,181	7,290	1,823	0.5
Multi				4,615	4,615	1,154	0.3
Netherlands	7,818	51,693	95,654	18,687	173,852	43,463	11.6
New Zealand				1,976	1,976	494	0.1
Norway	16,197	16,588	13,191	15,351	61,327	15,332	4.1
Panama	327	327	327	327	1,308	327	0.1
Portugal			2,822		2,822	705	0.2
Qatar	1,000				1,000	250	0.1
Republic of Korea	1,000	1,026	2,315	3,979	8,321	2,080	0.6
Spain	2,791	1,278	754	1,017	5,840	1,460	0.4
Sweden	7,481	15,842	13,015	15,263	51,601	12,900	3.4
Switzerland	15,669	16,190	14,957	10,150	56,967	14,242	3.8
United Kingdom	7,210	20,804	38,797	3,446	70,258	17,565	4.7
United States	38,385	23,544	33,038	43,511	138,478	34,619	9.2
Other inter-governmental organizations (OIGO)	97,041	17,036	89,764	94,213	298,054	74,513	19.9
AGFUND	100		46		146	37	0.0
European Commission	96,628	16,896	89,717	93,335	296,576	74,144	19.8
Commission for Labor Cooperation/North American Agreement on Labor Cooperation				820	820	205	0.1
Common Fund for Commodities				9	9	2	0.0
OECD	314	140		49	503	126	0.0
UN organizations and agencies	34,353	29,359	25,963	34,026	123,701	30,925	8.3
FAO	54	66		30	150	37	0.0
IFAD		663	2,265	758	3,687	922	0.2
IOM		3,250	877	1,915	6,041	1,510	0.4
JPs/ MPTFs - UNDP	22,724	10,751	8,439	19,315	61,229	15,307	4.1
UNAIDS	2,725	2,000	4,859	2,978	12,562	3,141	0.8
UNCDF			342	-398	-56	-14	0.0
UNDESA			1,119		1,119	280	0.1

UNDP		10	1,032	628	1,670	418	0.1
UNECE		35			35	9	0.0
UNEP		216			216	54	0.0
UNESCO				246	246	61	0.0
UNFIP	600		300	1,188	2,088	522	0.1
UNHCR	354	542	278	1,280	2,455	614	0.2
UNHSF		880	342	169	1,391	348	0.1
UNICEF	5,267	4,027	3,189	3,725	16,209	4,052	1.1
UNIDO		225		100	325	81	0.0
UNOCHA		297			297	74	0.0
UNOCT			230		230	58	0.0
UNOPS	1,756	107	1,497	560	3,920	980	0.3
UNV		160	503		663	166	0.0
UNRWA	492				492	123	0.0
UNWOMEN	380	6,130	669	1,531	8,710	2,178	0.6
WHO			21		21	5	0.0
Domestic development funding	47,697	11,574	27,123	13,663	100,057	25,014	6.7
Public-private partnerships*	20,414	16,704	12,673	21,820	71,610	17,903	4.8
Academic, Training, Research				200	200	50	0.0
Foundation	1,424	6,764	2,467	9,213	19,867	4,967	1.3
NGO				2,056	2,056	514	0.1
Other non-state actor	1,411	2,710	1,799	970	6,890	1,722	0.5
Private Sector	17,579	7,230	8,407	9,361	42,578	10,644	2.8
Social partner - Employers' association				20	20	5	0.0
International financial institutions (Banks)	10,345	2,467	2,259	4,294	19,365	4,841	1.3
African Development Bank	9,545		1,000	3,241	13,786	3,446	0.9
Islamic Development Bank	380				380	95	0.0
World Bank	420	2,467	1,259	1,053	5,199	1,300	0.3
Total	368,661	313,320	459,021	356,588	1,497,590	374,397	100.0

* The categories for PPPs have been aligned to the UN Data Cube standard as of 2020 reporting. Previous years used only the categories Private sector, Foundation and others.

Table 3: Ranking of approvals by technical field, 2019 & 2020 (US\$'000)*

Ranking	Technical Field	2019	
		\$	% share
1	EMPLOYMENT	182,035	39.7
2	DDG/P ⁽¹⁾	93,069	20.3
3	GOVERNANCE	74,962	16.3
4	WORKQUALITY	47,440	10.3
5	SOCPRO	30,336	6.6
6	ENTERPRISES	18,039	3.9
7	SECTOR	6,000	1.3
8	ACTRAV	2,731	0.6
10	ITC-TURIN	1,784	0.4
11	STATISTICS	1,491	0.3
12	NORMES	880	0.2
13	RESEARCH	193	
14	ACT/EMP	60	0.0
	Total	459,021	100.0
			0.0
	Grand Total	459,021	100.0

(1) Thanks to PROSPECTS, an integrated programme, covering multiple technical fields. Part of PROSPECTS Allocations to be decentralized to programme countries during 2020

Ranking	Technical Field	2020	
		\$	% share
1	GOVERNANCE	115,998	32.6
2	EMPLOYMENT	87,363	24.5
3	ENTERPRISES	48,174	13.5
4	SOCPRO	42,578	12.0
5	WORKQUALITY	30,035	8.4
6	DDG/P	17,343	4.9
7	NORMES	5,647	1.6
8	SECTOR	3,694	1.0
10	STATISTICS	3,493	1.0
11	RESEARCH	991	0.3
12	ITC-TURIN	607	0.2
13	ACTRAV	146	0.0
14	ACT/EMP	10	0.0
	Total	356,079	100.0
	<i>Miscellaneous ⁽¹⁾</i>	509	
	Grand Total	356,588	100.0

(1) "Miscellaneous" corresponds to amounts approved by development partners, which were not distributed at the time of approval by technical field.

*In the ILO technical fields are defined by the name of the unit or department involved, indicating a thematic priority but not necessarily a role of administrative and/or financial responsibility.

Table 4: Approvals by region, 2017 - 2020 (US\$'000)

Region	2017		2018		2019		2020		Average 2017-2020	
	\$	% share	\$	% share	\$	% share	\$	% share	\$	% share
Africa	65,412	17.7	76,018	24.3	100,476	24.4	56,519	15.9	74,606	19.9
Americas	43,971	11.9	24,934	8.0	20,468	7.2	20,887	5.9	27,565	7.4
Arab States	56,737	15.4	63,567	20.3	22,855	20.4	34,753	9.7	44,478	11.9
Asia	87,486	23.7	53,801	17.2	97,945	17.7	56,444	15.8	73,919	19.7
Europe	38,723	10.5	20,944	6.7	35,252	6.7	61,124	17.1	39,011	10.4
Global / Interregional	76,331	20.7	74,056	23.6	182,025	23.7	126,860	35.6	114,818	30.7
Total	368,661	100.0	313,320	100.0	459,021	100.0	356,588	100.0	374,397	100.0

Table 5: Approvals by administrative responsibility, 2019-2020 (US\$'000)

Table 5.1 Summary of approvals by departmental administrative responsibility

Administrative Responsibility	2019		2020	
	\$	% share	\$	% share
Headquarters	203,289	44.3	138,604	38.9
ACT/EMP	60	0.0	10	0.0
ACTRAV	1,000	0.2		
DDG/P	93,069	20.3	17,343	4.9
EMPLOYMENT	12,942	2.8	24,763	6.9
ENTERPRISES	5,916	1.3	16,961	4.8
GOVERNANCE	37,309	8.1	32,529	9.1
ITC-TURIN	2,429	0.5	607	0.2
NORMES	880	0.2	4,663	1.3
RESEARCH	193	0.0	991	0.3
SECTOR	2,448	0.5	2,510	0.7
SOCPRO	19,712	4.3	29,458	8.3
STATISTICS	1,491	0.3	2,673	0.7
WORKQUALITY	25,840	5.6	6,097	1.7
Field Offices	255,732	55.7	217,474	61.0
AFRICA	96,389	21.0	58,137	16.3
AMERICAS	21,190	4.6	19,326	5.4
ARAB STATES	22,187	4.8	32,911	9.2
ASIA	86,292	18.8	49,316	13.8
EUROPE	29,675	6.5	57,785	16.2
TOTAL Headquarters and Field	459,021	100.0	356,079	99.9
Miscellaneous ⁽¹⁾			509	0.1
GRAND TOTAL	459,021	100.0	356,588	100.0

⁽¹⁾ "Miscellaneous" corresponds to amounts approved by development partners which were not distributed at the time of approval by administrative responsibility.

Table 5.2 Breakdown of approvals by administrative responsibility in Headquarters

Administrative Responsibility	2019		2020	
	\$	% share	\$	% share
Headquarters	203,289	44.3	138,604	38.9
ACT/EMP	60	0.0	10	0.0
ACTRAV	1,000	0.2		
DDG/P	93,069	20.3	17,343	4.9
EMPLOYMENT:	12,942	2.8	24,763	6.9
DEVINVEST	57	0.0	16,020	4.5
EMPLAB	27	0.0	1,772	0.5
EMPLOYMENT	2,841	0.6	3,236	0.9
SKILLS	10,017	2.2	3,734	1.0
ENTERPRISES:	5,916	1.3	16,961	4.8
COOP	600	0.1	276	0.1
ENTERPRISES	257	0.1	8,416	2.4
MULTI	1,913	0.4		
SFU	155	0.0	5,440	1.5
SME	2,991	0.7	2,829	0.8
GOVERNANCE:	37,309	8.1	32,529	9.1
BETTERWORK	27,179	5.9	15,401	4.3
FUNDAMENTALS	8,246	1.8	10,264	2.9
GOVERNANCE			3,024	0.8
LABADMIN/OSH	1,784	0.4	3,840	1.1
LABOURLAW	100	0.0		
WORKQUALITY:	25,839	5.6	5,897	1.7
GED	5,815	1.3	3,826	1.1
MIGRANT	19,990	4.4	2,071	0.6
WORKQUALITY	34	0.0		
ITC-TURIN	2,429	0.5	607	0.2
NORMES	880	0.2	4,663	1.3
RESEARCH	193	0.0	991	0.3
SECTOR	2,448	0.5	2,510	0.7
SOCPRO	19,712	4.3	29,658	8.3
STATISTICS	1,491	0.3	2,673	0.7

Table 5.3 Breakdown of approvals by administrative responsibility in the Field

14

Administrative Responsibility	2019		2020	
	\$	% share	\$	% share
Field Offices	255,732	55.7	217,474	61.0
AFRICA	96,389	21.0	58,137	16.3
CO-Abidjan	4,950	1.1	860	0.2
CO-Abuja	778	0.2	430	0.1
CO-Addis Ababa	16,828	3.7	15,446	4.3
CO-Algiers	26,397	5.8	7,926	2.2
CO-Antananarivo	2,843	0.6	1,884	0.5
CO-Dar es Salaam	8,026	1.7	9,612	2.7
CO-Harare	985	0.2	1,849	0.5
CO-Kinshasa	1,000	0.2	4,503	1.3
CO-Lusaka	5,105	1.1	6,412	1.8
DWT/CO-Cairo	3,417	0.7	3,762	1.1
DWT/CO-Dakar			1,865	0.5
DWT/CO-Pretoria	23,833	5.2	544	0.2
DWT/CO-Yaounde			3,043	0.9
RO- Africa	2,228	0.5		
AMERICAS	21,190	4.6	19,326	5.4
CO-Brasilia	6,365	1.4	4,397	1.2
CO-Buenos Aires	236	0.1	739	0.2
CO-Mexico	3,528	0.8	6,048	1.7
DWT/CO-Lima	8,974	2.0	4,977	1.4
DWT/CO-Port-of-Spain			1,736	0.5
DWT/CO-San Jose	388	0.1	327	0.1
DWT/CO-Santiago	617	0.1	521	0.1
RO-Latin America and the Caribbean	1,081	0.2	579	0.2
ARAB STATES	22,187	4.8	32,911	9.2
RO-Arab States/DWT-Beirut	22,187	4.8	32,911	9.2
ASIA	86,292	18.8	49,316	13.8
CO-Beijing	2,855	0.6	564	0.2
CO-Colombo	2,451	0.5	2,068	0.6
CO-Dhaka	4,238	0.9	3,216	0.9
CO-Hanoi			5,704	1.6
CO-Jakarta	3,226	0.7	1,063	0.3
CO-Kathmandu	863	0.2	1,291	0.4
CO-Manila	2,694	0.6	4,493	1.3
CO-Suva	22,682	4.9	814	0.2
DWT/CO-Bangkok	2,277	0.5	3,691	1.0
DWT/CO-New Delhi	10,219	2.2	2,393	0.7
ILO-Kabul			968	0.3
ILO-Yangon	3,285	0.7	3,164	0.9
RO-Asia and the Pacific	31,501	6.9	19,886	5.6
EUROPE	29,675	6.5	57,785	16.2
DWT/CO-Budapest	8,568	1.9	11,104	3.1
DWT/CO-Moscow	1,642	0.4	2,000	0.6
ILO-Ankara	19,118	4.2	44,190	12.4
ILO Rome	336	0.1	491	
RO-Europe and Central Asia	11	0.0		
TOTAL Headquarters and Field	459,021	100.0	356,079	99.9
Miscellaneous ⁽¹⁾			509	
GRAND TOTAL	459,021	100.0	356,588	100.0

⁽¹⁾ "Miscellaneous" corresponds to amounts approved by development partners which were not distributed at the time of approval by administrative responsibility.

Table 6: Approvals by source of funds and technical field, 2020 (US\$'000)

Technical Fields	Total		Multi-bi Dev. Partners		Domestic development funding		PPPs		IFIs (Banks)		United Nations		EC & OIGO	
	\$	% share	\$	% share	\$	% share	\$	% share	\$	% share	\$	% share	\$	% share
ACT/EMP	10	0.0					10	0.0						
ACTRAV	146	0.0	146	0.1										
DDG/P	17,343	4.9	17,343	9.2										
EMPLOYMENT:	87,363	24.5	36,165	19.2	4,839	35.4	3,172	14.5	2,741	63.8	8,695	25.6	31,752	33.7
DEVINVEST	28,709	8.1	8,606	4.6	2,331	17.1					5,413	15.9	12,359	13.1
EMPLAB	5,985	1.7	1,846	1.0			225	1.0			2,718	8.0	1,195	1.3
EMPLOYMENT	18,685	5.2	12,047	6.4	101	0.7					325	1.0	6,213	6.6
SKILLS	33,984	9.5	13,666	7.2	2,407	17.6	2,947	13.5	2,741	63.8	239	0.7	11,986	12.7
ENTERPRISES:	48,174	13.5	29,317	15.5	2,133	15.6	5,126	23.5	545	12.7	7,161	21.0	3,892	4.1
COOP	3,150	0.9	3,150	1.7										
ENTERPRISES	28,881	8.1	19,811	10.5	2,133	15.6			545	12.7	2,509	7.4	3,883	4.1
GREEN	3,647	1.0									3,647	10.7		
SFU	5,505	1.5	309	0.2			4,980	22.8			207	0.6	9	0.0
SME	6,991	2.0	6,047	3.2			145	0.7			798	2.3		
GOVERNANCE:	115,998	32.5	57,741	30.6	2,990	21.9	10,206	46.8	1,008	23.5	5,731	16.8	38,321	40.7
BETTERWORK	17,564	4.9	12,677	6.7	147	1.1	4,727	21.7			14	0.0		
DIALOGUE	3,191	0.9	563	0.3							2,628	7.7		
FUNDAMENTALS	62,554	17.5	19,094	10.1	2,843	20.8	5,179	23.7	1,008	23.5	649	1.9	33,780	35.9
GOVERNANCE	5,074	1.4	3,695	2.0			300	1.4			49	0.1	1,030	1.1
LABADMIN/OSH	24,614	6.9	18,713	9.9							2,391	7.0	3,511	3.7
LABOURLAW	3,000	0.8	3,000	1.6										
WORKQUALITY:	30,035	8.4	11,881	6.3	68	0.5	830	3.8			6,931	20.4	10,326	11.0
GED	6,175	1.7	1,692	0.9	68	0.5	240	1.1			4,176	12.3		
INWORK	2,416	0.7	2,416	1.3										
MIGRANT	21,444	6.0	7,773	4.1			590	2.7			2,755	8.1	10,326	11.0
ITC-TURIN	607	0.2											607	0.6
NORMES	5,647	1.6	985	0.5									4,663	4.9
RESEARCH	991	0.3					991	4.5						
SECTOR	3,694	1.0	1,977	1.0									1,718	1.8
SOCPRO	42,578	11.9	32,509	17.2	3,634	26.6					4,319	12.7	2,115	2.2
STATISTICS	3,493	1.0					1,485	6.8			1,188	3.5	820	0.9
SUB TOTAL 2020	310,008	100.0	188,064	99.7	13,663	100.0	21,820	100.0	4,294	1.4	34,026	11.0	94,213	30.4
Miscellaneous*	509	100.0	509											
GRAND TOTAL 2020	356,588	100.0	188,573	100.0	13,663	100.0	21,820	100.0	4,294	1.2	34,026	9.5	94,213	26.4
% of Total			52.9		3.8		6.1		1.2		9.5		26.4	

*Miscellaneous corresponds to amounts approved by development partners, which were not distributed at the time of approval by technical field.

Table 7: Approvals by region and technical field, 2020 (US\$'000)

[illegible]

SOCPRO	42,578	11.9	4,443	7.9	411	2.0	5,512	15.9	5,884	10.4	637	1.0	25,690	20.3
STATISTICS	3,493	1.0			820	3.9							2,673	2.1
GRAND TOTAL 2020	356,079	99.9	56,519	100.0	20,887	5.9	34,753	9.7	56,444	15.8	61,124	17.1	126,351	35.4
Miscellaneous*	509	0.1											509	
GRAND TOTAL 2020	356,588	100.0	56,519	100.0	20,887	5.9	34,753	9.7	56,444	15.8	61,124	17.1	126,860	35.6
Region %			15.9		5.9		9.7		15.8		17.1		35.6	

*Miscellaneous corresponds to amounts approved by development partners, which were not distributed at the time of approval by technical field.

Table 8: Multi-bilateral development partner, approvals by region and technical field, 2020 (US\$'000)

18

Technical Fields	Africa	Americas	Arab States	Asia	Europe	Global /Inter-regional	Total	% share
ACTRAV		146					146	0.1
DDG/P						17,343	17,343	9.2
EMPLOYMENT	12,964	1,345	3,872	7,006	6,630	4,348	36,165	19.2
ENTERPRISES	6,386		2,932	4,340	505	15,155	29,317	15.5
GOVERNANCE	9,605	6,411	3,970	17,811	2,390	17,555	57,741	30.6
NORMES				985			985	0.5
SECTOR	1,185					792	1,977	1.0
SOCPRO	6		5,512	1,502		25,490	32,509	17.2
WORKQUALITY	563	2,388	212	5,878	800	2,041	11,881	6.3
SUB TOTAL 2020	30,708	10,289	16,498	37,521	10,324	82,724	188,064	99.7
<i>Miscellaneous*</i>						509	509	0.3
GRAND TOTAL 2020	30,708	10,289	16,498	37,521	10,324	83,233	188,573	100.0
<i>Region %</i>	<i>16.3</i>	<i>5.5</i>	<i>8.7</i>	<i>19.9</i>	<i>5.5</i>	<i>44.1</i>	<i>100.0</i>	
TOTAL 2019	49,861	5,233	16,735	63,843	27,176	138,392	301,239	
<i>Region %</i>	<i>16.6</i>	<i>1.7</i>	<i>5.6</i>	<i>21.2</i>	<i>9.0</i>	<i>45.9</i>	<i>100.0</i>	

*Miscellaneous corresponds to amounts approved by development partners, which were not distributed at the time of approval by technical field.

Table 9: Domestic Development Funding (DDF), approvals by region and technical field, 2020 (US\$'000)

Technical Fields	Africa	Americas	Arab States	Asia	Europe	Global /Inter-regional	Total	% share
EMPLOYMENT	2,331	2,507					4,839	35.4
ENTERPRISES	142	1,991					2,133	15.6
GOVERNANCE		2,843		147			2,990	21.9
SOCPRO	261	108		2,762	502		3,634	26.6
WORKQUALITY		68					68	0.5
TOTAL 2020	2,734	7,517		2,909	502		13,663	100.0
<i>Region %</i>	<i>20.0</i>	<i>55.0</i>		<i>21.3</i>	<i>3.7</i>		<i>100.0</i>	
TOTAL 2019	14,842	11,030	452	742	57		27,123	
<i>Region %</i>	<i>54.7</i>	<i>40.7</i>	<i>1.7</i>	<i>2.7</i>	<i>0.2</i>		<i>100.0</i>	

Table 10: Public-Private Partnerships (PPPs), approvals by region and technical field, 2020 (US\$'000)

Technical Fields	Africa	Americas	Arab States	Asia	Europe	Global /Inter-regional	Total	% share
ACT/EMP						10	10	0.0
EMPLOYMENT	2,056	225		891			3,172	14.5
ENTERPRISES	173					4,952	5,126	23.5
GOVERNANCE	150				4,134	5,922	10,206	46.8
RESEARCH						991	991	4.5
STATISTICS						1,485	1,485	6.8
WORKQUALITY				590		240	830	3.8
TOTAL 2020	2,379	225		1,481	4,134	13,591	21,820	100.0
<i>Region %</i>	<i>10.9</i>	<i>1.0</i>		<i>6.8</i>	<i>18.9</i>	<i>62.3</i>	<i>100.0</i>	
TOTAL 2019	1,100	372	909	3,190		6,042	12,673	
<i>Region %</i>	<i>8.7</i>	<i>2.9</i>	<i>7.2</i>	<i>25.2</i>		<i>47.7</i>	<i>100.0</i>	

Table 11: IFIs (Banks), approvals by region and technical field, 2020 (US\$'000)

19

Technical Fields	Africa	Americas	Arab States	Asia	Europe	Global /Inter-regional	Total	% share
EMPLOYMENT	2,741						2,741	63.8
ENTERPRISES	500					45	545	12.7
GOVERNANCE					1,008		1,008	23.5
TOTAL 2020	3,241				1,008	45	4,294	100.0
<i>Region %</i>	<i>75.5</i>				<i>23.5</i>	<i>1.0</i>	<i>100.0</i>	
TOTAL 2019	1,000			250	1,009		2,259	
<i>Region %</i>	<i>44.3</i>			<i>11.1</i>	<i>44.7</i>		<i>100.0</i>	

Table 12: UN System, approvals by region and technical field, 2020 (US\$'000)

Technical Fields	Africa	Americas	Arab States	Asia	Europe	Global /Inter-regional	Total	% share
EMPLOYMENT	4,046	226	2,258	106	440	1,620	8,695	25.6
ENTERPRISES	962	570	250	1,583	30	3,765	7,161	21.0
GOVERNANCE	4,383		250	578	520		5,731	16.8
SOCPRO	2,062	303		1,620	135	200	4,319	12.7
STATISTICS						1,188	1,188	3.5
WORKQUALITY	516	937		2,499		2,978	6,931	20.4
TOTAL 2020	11,969	2,036	2,758	6,387	1,125	9,751	34,026	100.0
<i>Region %</i>	<i>35.2</i>	<i>6.0</i>	<i>8.1</i>	<i>18.8</i>	<i>3.3</i>	<i>28.7</i>	<i>100.0</i>	
TOTAL 2019	10,649	895	1,602	3,975	1,101	7,742	25,963	
<i>Region %</i>	<i>41.0</i>	<i>3.4</i>	<i>6.2</i>	<i>15.3</i>	<i>4.2</i>	<i>29.8</i>	<i>100.0</i>	

Table 13: Other Inter-Governmental Organisations (including European Commission), approvals by region and technical field, 2020 (US\$'000)

Technical Fields	Africa	Americas	Arab States	Asia	Europe	Global /Inter-regional	Total	% share
EMPLOYMENT	1,195		11,986		4,779	13,792	31,752	33.7
ENTERPRISES					3,883	9	3,892	4.1
GOVERNANCE			3,511		34,762	49	38,321	40.7
ITC-TURIN					607		607	0.6
NORMES						4,663	4,663	4.9
SECTOR						1,718	1,718	1.8
SOCPRO	2,115						2,115	2.2
STATISTICS		820					820	0.9
WORKQUALITY	2,179			8,146			10,326	11.0
TOTAL 2020	5,489	820	15,497	8,146	44,031	20,230	94,213	100.0
<i>Region %</i>	<i>5.8</i>	<i>0.9</i>	<i>16.4</i>	<i>8.6</i>	<i>46.7</i>	<i>21.5</i>	<i>100.0</i>	
TOTAL 2019	23,024	2,939	3,158	24,945	5,909	29,790	89,764	
<i>Region %</i>	<i>25.6</i>	<i>3.3</i>	<i>3.5</i>	<i>27.8</i>	<i>6.6</i>	<i>33.2</i>	<i>100.0</i>	