



Who participates in the Turkish labour market?

Syrian labour force in Turkey

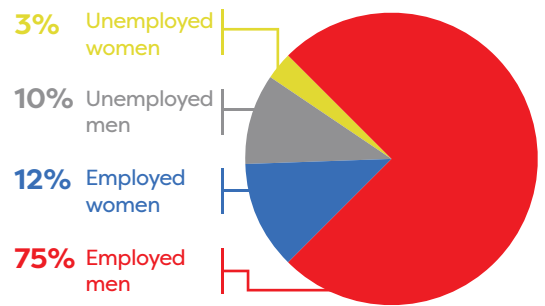
930,000

- Out of 2 million Syrians at working age, **930,000** were part of the labour force.
- **813,000** were employed (including **130,000** self-employed). This represents **2.8** per cent of the employed population in Turkey.
- The employment rate of Syrians is approximately **40%**.

97%

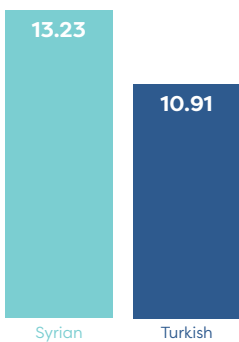
More than **97%** of Syrian workers are estimated to work informally (according to the Ministry of Family, Labour and Social Services **20,967** work permits were issued to Syrians in 2017). A very small share are formally employed women.

Syrian labour force in Turkey

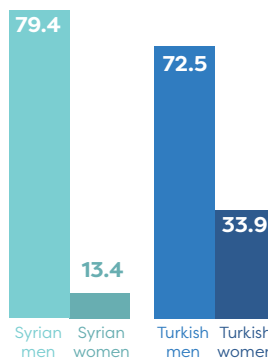


Characteristics of the Syrian labour force in comparison

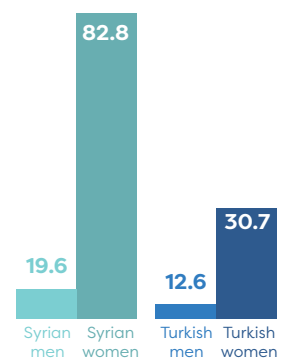
Unemployment rate, 15+ population (in percentage)



Labour force participation rate (in percentage)



NEET (not in employment, education or training) rate, 15-24 years old (in percentage)



Where do they work?

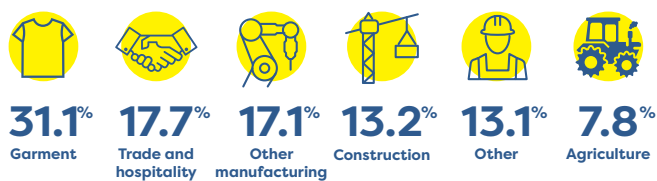
Syrians by sector, province and enterprise size

Syrians work in sectors which traditionally have high informality rates.

Syrian workers are concentrated in a few provinces (Istanbul, Adana, Bursa, Gaziantep, Hatay, Konya and Izmir). In these provinces, they account for **84%** of all working Syrians.

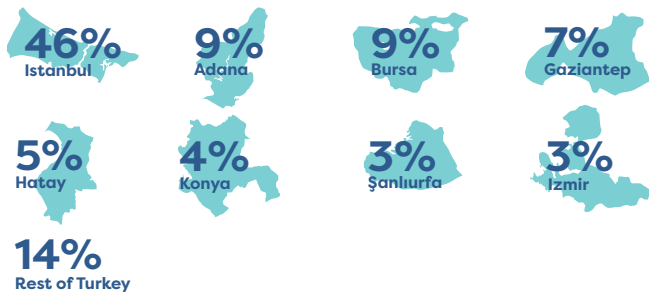
Syrians are more likely than informally employed Turkish workers to work in companies with **10** or more employees.

Sectors (in percentage)

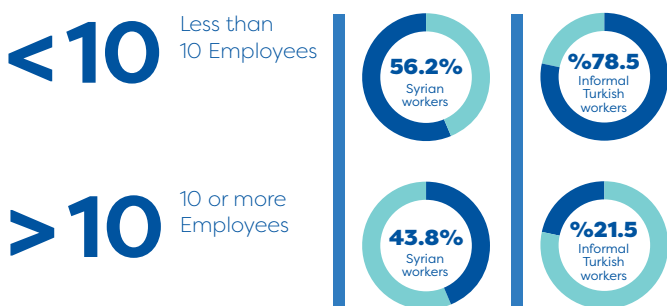


Provinces (percentage of Syrian workers by sub-province*)

*Sub-provinces represent NUTS-2 classifications used by TURKSTAT.



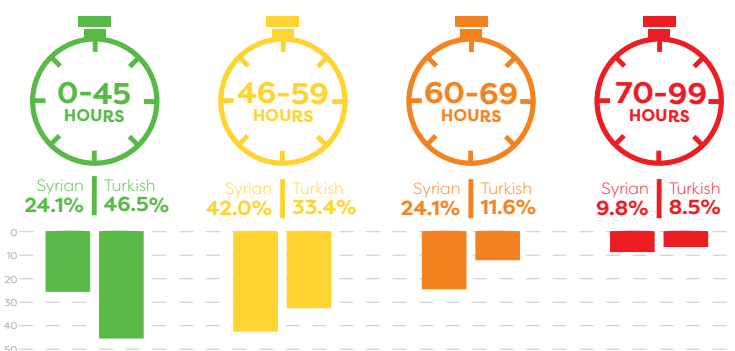
Company size (in percentage)



What about their working conditions?

Working time per week

More than 75% of Syrians work more than 45 hours per week (legal weekly working time in Turkey).



Wages

On average Syrians earn less than the minimum wage. The average monthly wage of Syrian men was **1,337 TL**, and **1,083 TL** for Syrian women in 2017.



Impact of informality

If all informally employed Syrians were formalized (excluding self-employed workers), SSI would gain **7 billion TL** per year.

This amount was calculated considering the social security premiums to be collected from approximately **660,000 Syrian employees** who would be working formally.

