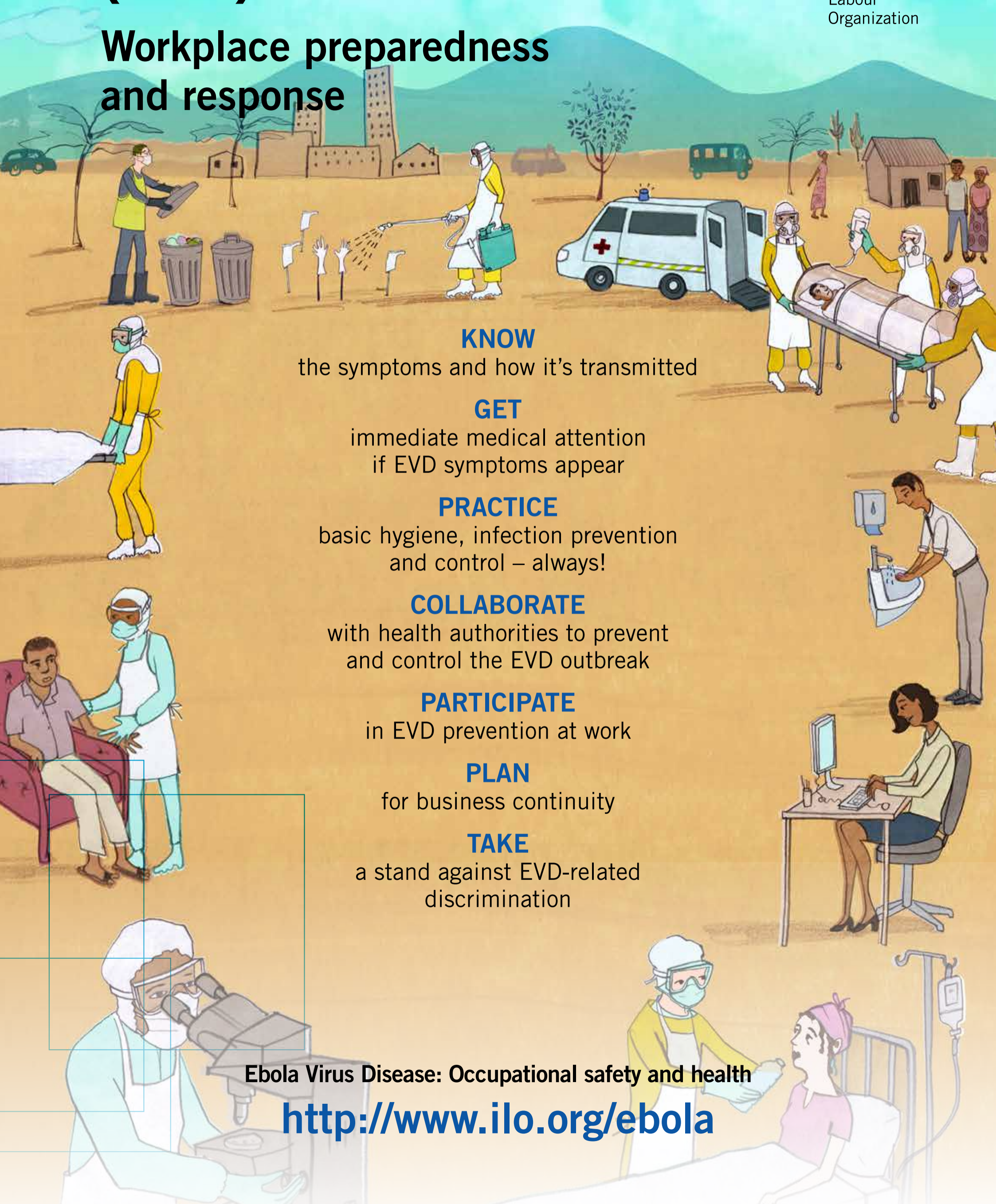




International
Labour
Organization

Ebola Virus Disease (EVD) Outbreak:

Workplace preparedness and response



KNOW

the symptoms and how it's transmitted

GET

immediate medical attention
if EVD symptoms appear

PRACTICE

basic hygiene, infection prevention
and control – always!

COLLABORATE

with health authorities to prevent
and control the EVD outbreak

PARTICIPATE

in EVD prevention at work

PLAN

for business continuity

TAKE

a stand against EVD-related
discrimination

Ebola Virus Disease: Occupational safety and health

<http://www.ilo.org/ebola>