

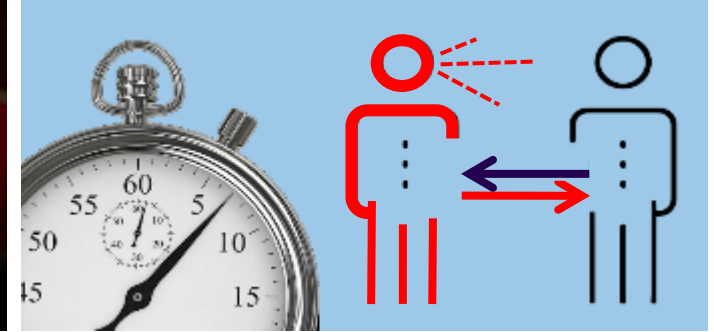
► **Fourth Meeting of the Special Tripartite Committee of the Maritime Labour Convention, 2006 (MLC, 2006) – Part II, (05-13 May 2022)**

Preventive measures in the HQ building

► Why do we still have preventive measures ?

- Host country has removed most of its measures however the employer still has the responsibility towards staff and visitor's safety and health.
- Epidemiological situation is still at risk and cases are increasing again; COVID-19 health problems are not the same as a flu.
- Duty of care to protect vulnerable persons including constituents.
- Guarantee the business continuity of the GB (cluster=quarantine)

Access to premises



- ▶ Do not allow any staff or visitors who are not feeling well including those with symptoms of COVID-19
- ▶ Do not allow access to people who have been affected by COVID-19 or in contact with probable or confirmed cases of COVID-19 without the approval of the Medical Service, MEDSERV.
- ▶ Essential staff, contact case, must follow additional safety measures and self tests.
- ▶ Do not forget to do the self-health check daily before coming to the office.
- ▶ **Follow all safety measures even if vaccinated.**



Sanitary measures ILO premises

- ▶ Whenever possible, maintain safe distance.
- ▶ Frequent and rigorous hand hygiene.
- ▶ Wearing of masks is mandatory when moving around the entire building.
- ▶ Mask cannot be removed once seated and at safe distance for the time being in shared open spaces.
- ▶ Adhere to job specific SOP, e.g. manipulation of equipment and tools.



Measures in all conference rooms

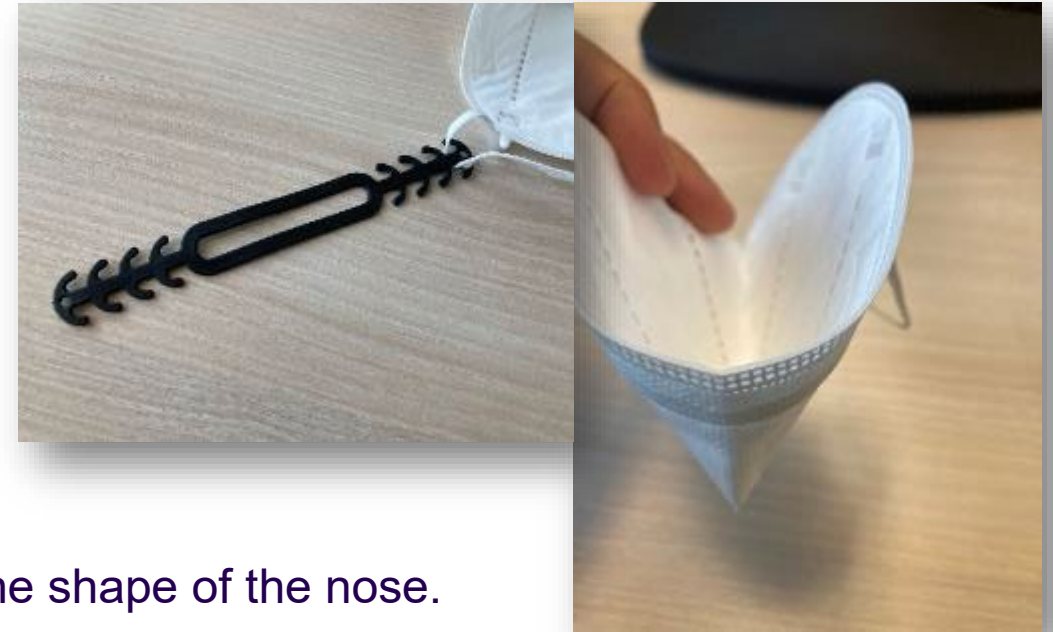
- ▶ To ensure sufficient participation of constituents seating distance reduced to 1.5m (ILO LABADMIN OSH recommends normally 2m).
- ▶ The use of FFP2 mask is mandatory in all meeting areas to mitigate reduced distance.
- ▶ Interpreters; operators; technicians must follow dedicated SOP.



Use of FFP2 masks

Will be provided to all participants

- ▶ Always wash your hands before putting on the mask.
- ▶ Ensure the mask is not deteriorated.
- ▶ Preform the nose clip to round its shape and adapt it to the shape of the nose.
- ▶ Stretch the elastics to check their condition and give them flexibility.
- ▶ Put the mask without crossing the elastics and press with both hands to fit to the shape of the face.
- ▶ Breathe-in to check for significant air leaks at the edges and adapt it as needed.
- ▶ If necessary, use the accessory that allows you to stretch the elastics from the ears.
- ▶ Avoid touching it especially if you have handled objects.

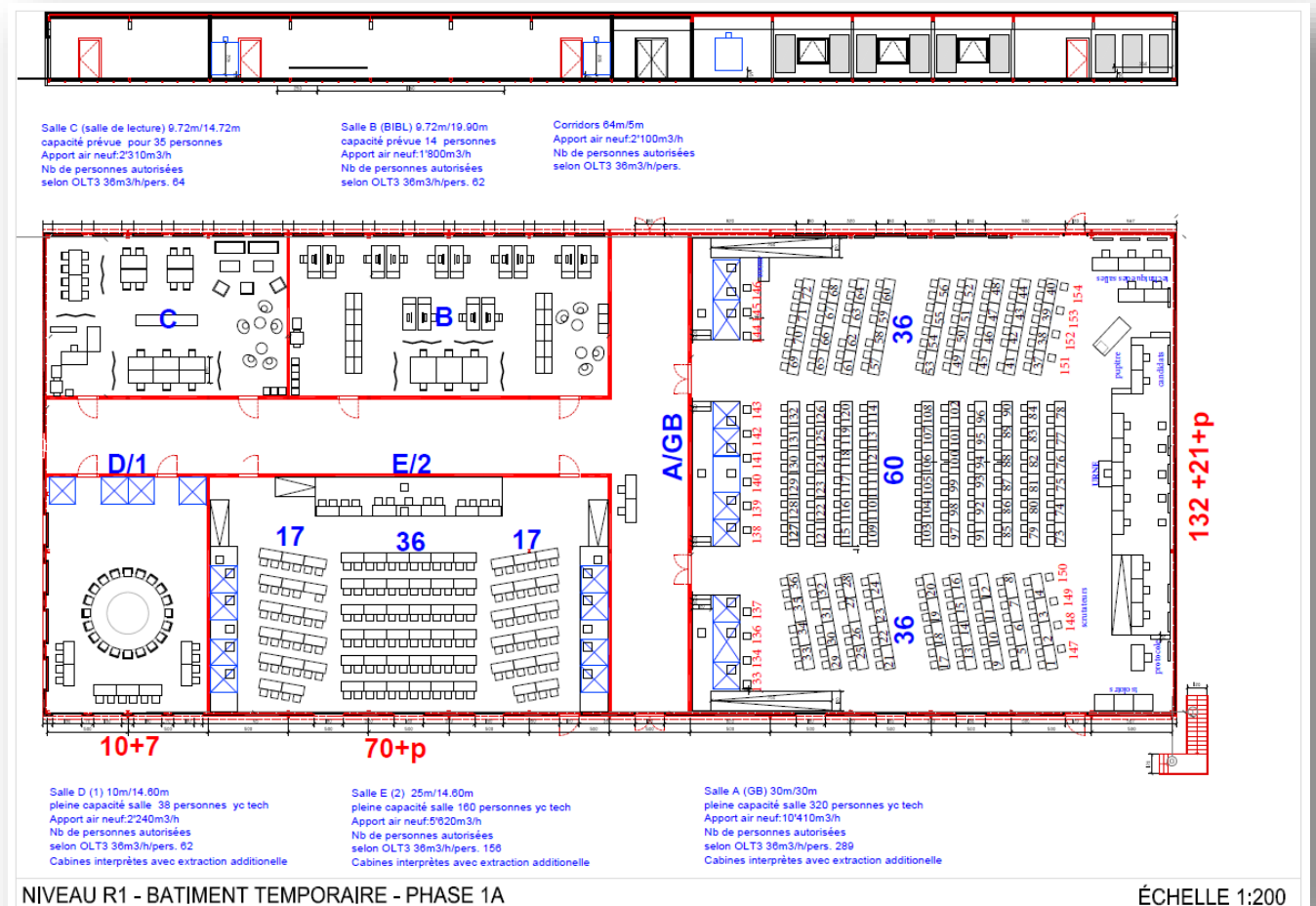


► Use of FFP2 masks

- When the mask is worn properly, it can provide a feeling of lack of air.
- It is important to breathe calmly and take the time to adapt. The masks were made to allow for sufficient air supply.
- We recommend taking regular breaks outdoors.
- Do not forget to hydrate regularly, the additional ventilation of the rooms can dry the air.
- If you have symptoms or breathing problems do not hesitate to contact the medical service.
- An FFP2 mask can be used for up to 8 hours. Feel free to replace it if it is humid.

Measures in conference areas : new Appia building

- Ventilation in new building designed for maximum occupancy and in full accordance with local standards.
- Interpreters' booths additional extractors.



- ▶ Keep a safe distance when waiting.
- ▶ Seat at dedicated places.
- ▶ Do not add / move chairs.
- ▶ Enjoy catering services.

Opening hours:

Cafeteria "Les Trois Clefs" (R2 North) from 07:30 to 17:00

The Delegates' Bar (R3 South) from 08:30 to 16:00

STC Bar (R1 North) 11:00 to 16:00



Emergency evacuation of the building

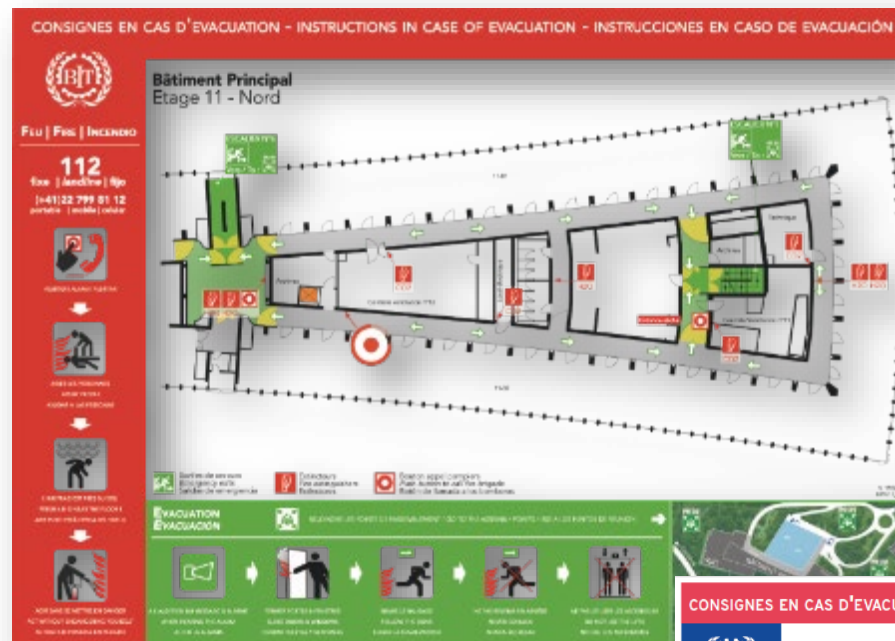
Control Center 24/7

Emergency :

112 from a landline

(+41) 22 799 81 12 from a mobile

- ▶ Leave the premises using the nearest exit.
- ▶ Reach the meeting points.
- ▶ Follow the fire warden instructions.
- ▶ Keep wearing the mask as distances are difficult to keep during evacuation.



► Business continuity of the GB

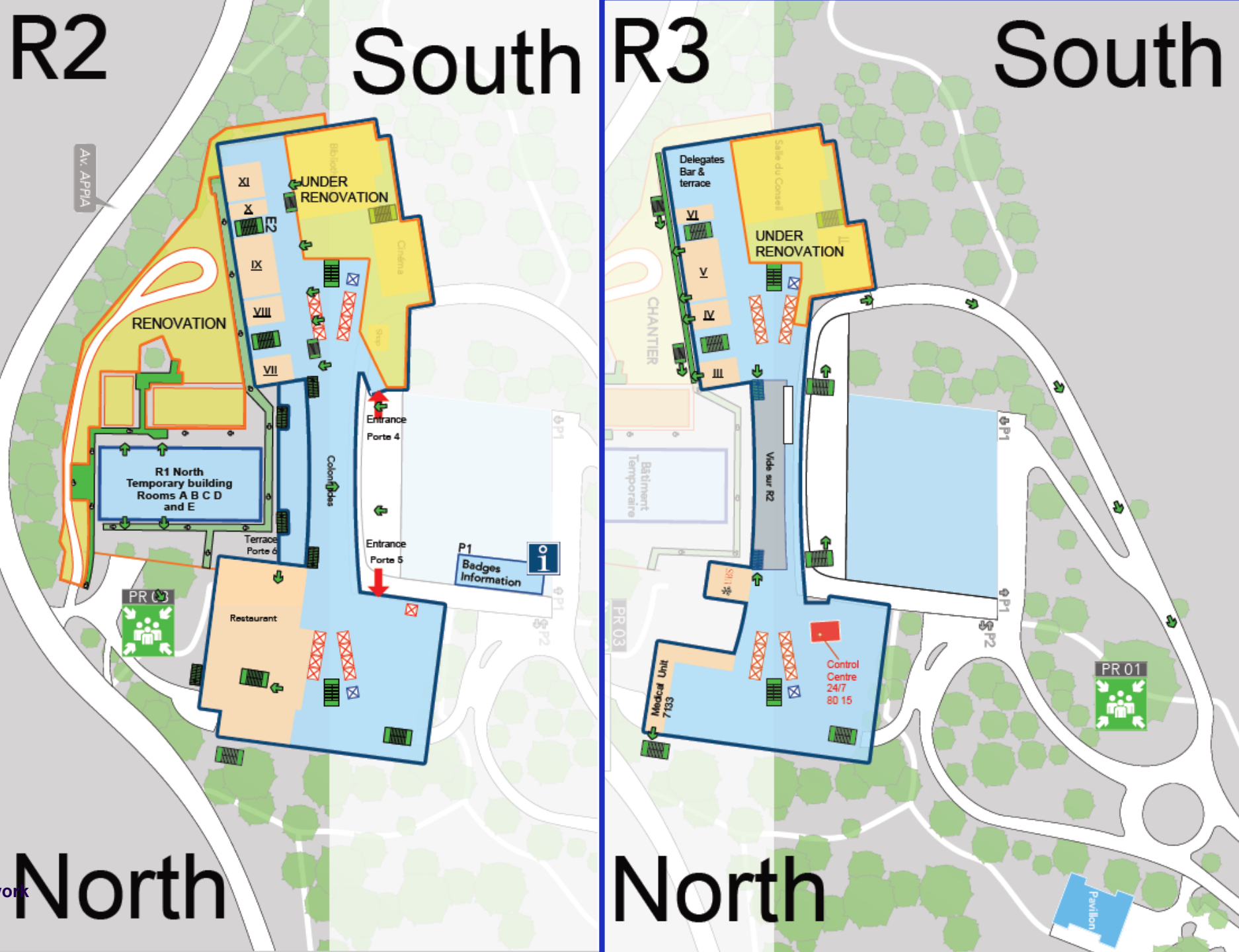
► Measures in case of positive case or symptoms :

- Contact your supervisor/coordinator to arrange back-up.
- Limit further spreading through disinfection (FACILITIES) and contact tracing (MEDSERV)

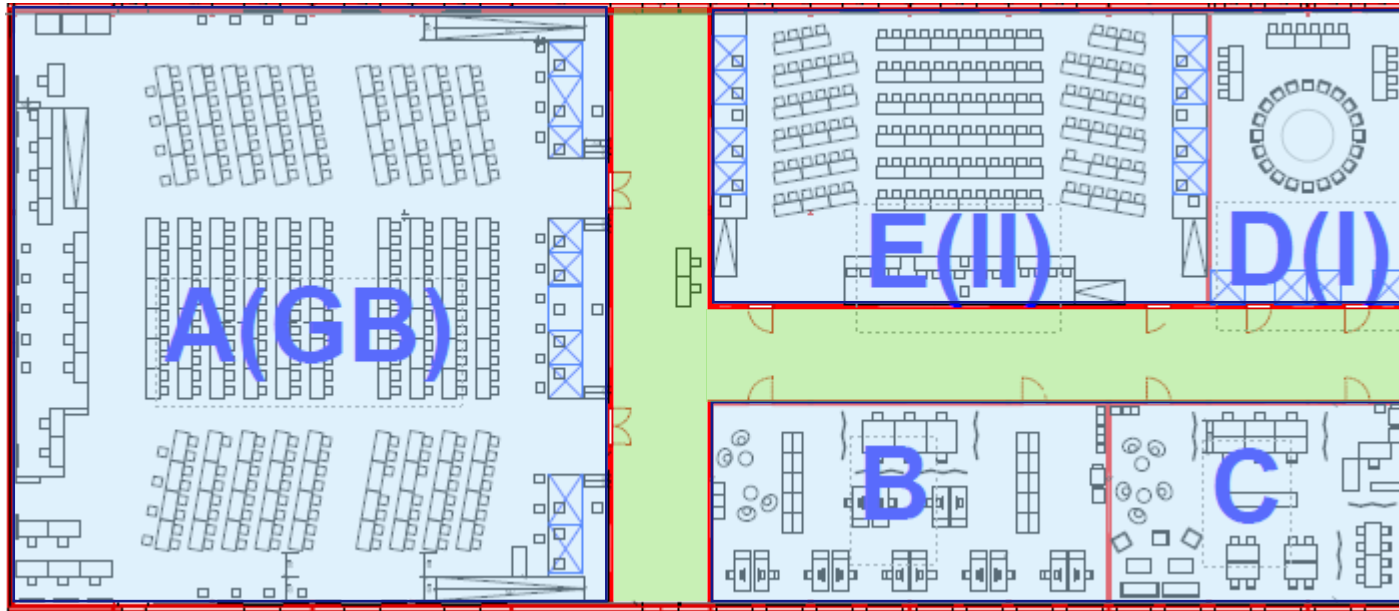
► Your contribution :

- Strictly adhere to the safety measures.
- Keep an agenda of your activities/contacts.

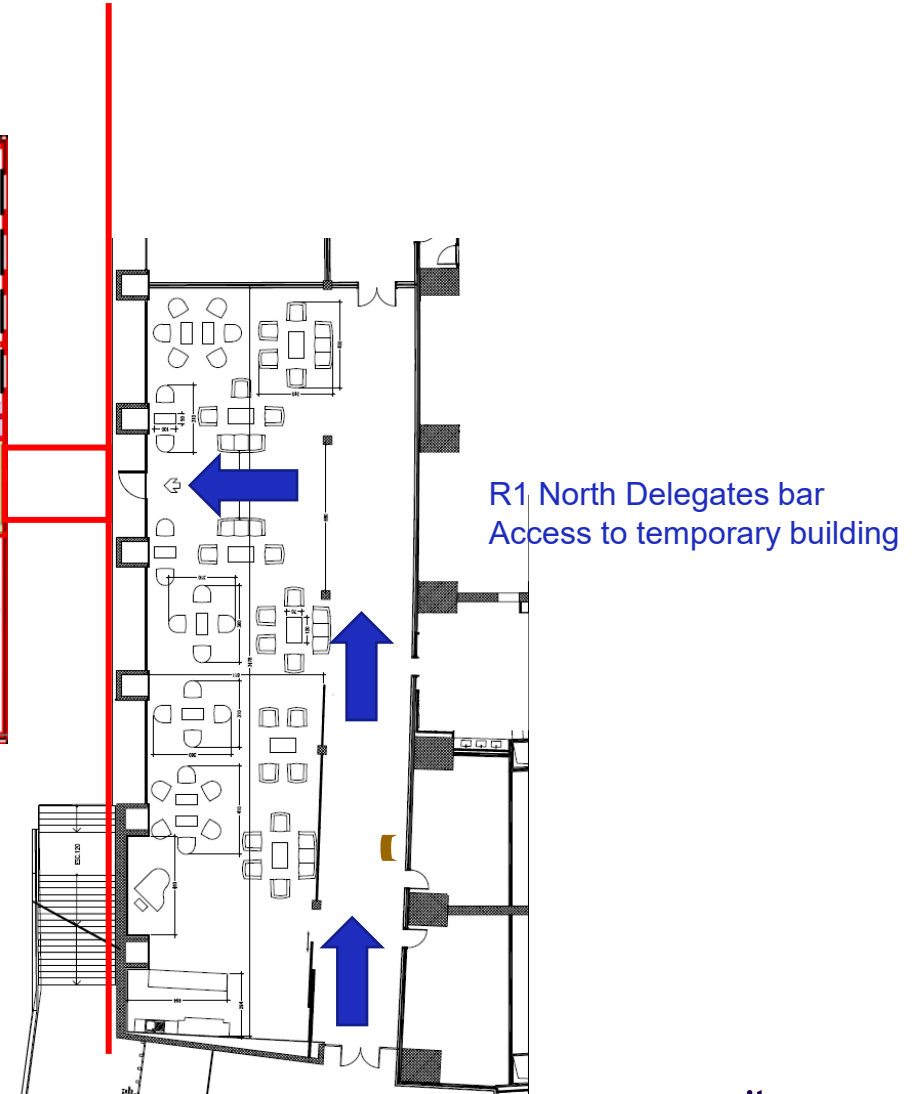
Find your way
around



Find your way around



R1NORTH TEMPORARY BUILDING



► Need more information?

MEDICAL: infirmary@ilo.org Tel: +41 22 799 7133

SECURITY: controle@ilo.org Tel: +41 22 799 8015

OSH: alonso-maestre@ilo.org Tel: +41 22 799 6432

EMERGENCY : Landline: 112; from a mobile: +41 22 799 81 12

