

ILO/EIIP SUPPORT TO THE EPWP

ILO/EIIP has provided support to EPWP in the following thematic/key result areas



Policy Development and Promotion

Contribution made to the development and promotion of appropriate infrastructure investment and public employment policies for the EPWP including the EPWP Policy(ies).



Skills/Capacity Development

Knowledge, skills and technical capacity of EPWP Stakeholders in labour-intensive delivery of infrastructure investment, public employment and sustainable livelihood programmes are enhanced.



Project Management and Technical Support

Implementation tools developed and public bodies assisted in delivery of infrastructure projects, in a manner that increases labour intensity and is compliant with EPWP and decent work principles.



Research and Innovation

Research studies that contribute to the optimization and mainstreaming of the labour-intensive delivery of infrastructure investment, public employment and sustainable livelihood programmes carried out in collaboration with relevant Stakeholders implementing the EPWP.



Advocacy and Partnerships

Adoption and application of policies, strategies, processes, good practices and tools that contribute to upscaling the effectiveness and impact of the EPWP promoted.

EIIP CAPABILITIES

Over the past 40 years, ILO's EIIP has given more than 70 countries a unique portfolio of productive employment creation. The EIIP approach provides support at three levels:

- **Macro level:** ILO advises Governments on the design of infrastructure programmes and assessments of their employment impact, appropriate procurement procedures and wage setting, improved targeting of youth, women, persons with disabilities, indigenous people and disadvantaged groups;
- **Meso level:** ILO provides institutional development and capacity building for National and decentralized Governments, training of Programme/Project Managers, Consultants and Small, medium and micro enterprises (SMMEs) to develop the private sector and the local construction industry, and skills enhancement for long-term employability;
- **Project level:** ILO provides technical assistance to optimize the labour content of investments, ensuring quality and timely delivery, promote decent working conditions and setting up monitoring and evaluation systems.



CONTACT INFORMATION

- ✉ pretoria@ilo.org
- ☎ +27 12 818 8000
- 🌐 www.ilo.org/pretoria
- 🐦 [@ilo_pretoria](https://twitter.com/ilo_pretoria)
- 📍 ILO Pretoria Office



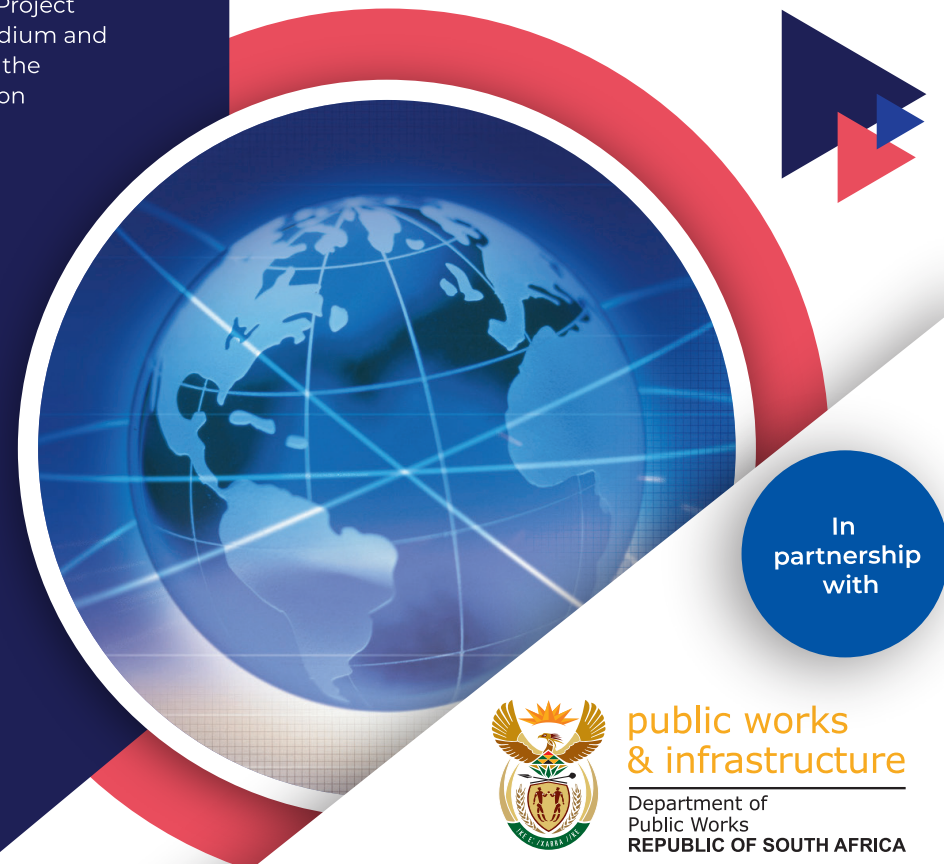
International
Labour
Organization

EIIP



Employment Intensive Investment Programme

Creating jobs through public investment



public works
& infrastructure

Department of
Public Works
REPUBLIC OF SOUTH AFRICA



LIMPOPO
PROVINCIAL GOVERNMENT
REPUBLIC OF SOUTH AFRICA

DEPARTMENT OF

PUBLIC WORKS, ROADS & INFRASTRUCTURE



ILO DG visit to South Africa

THE INTERNATIONAL LABOUR ORGANISATION (ILO)

The International Labour Organization (ILO) is the oldest, specialised United Nations (UN) Agency that was founded in 1919. Its four strategic objectives are:

- ▶ Set and promote standards and fundamental principles and rights at work;
- ▶ Create greater opportunities for women and men to have decent employment and income;
- ▶ Enhance the coverage and effectiveness of social protection for all;
- ▶ Strengthen tripartism and social dialogue.

ILO has 187 member countries and its head office is located in Geneva, Switzerland. ILO has over 40 field offices and employs over 900 staff that work in Development Cooperation (DC).

The International Labour Organization (ILO), Technical Assistance project to EPWP, started in 2005. Its scope and focus continuously changed over the years to suit the priorities and objectives of various phases of the Programme. The project has two components, the National and Limpopo province, each with its distinct team of technical and support staff.

THE ILO EMPLOYMENT INTENSIVE INVESTMENTS PROGRAMME IN SOUTH AFRICA

ILO initiated the Employment Intensive Investment Programme (EIIP) in the early 1970s. The EIIP links infrastructure development with employment creation, poverty reduction and local economic and social development.

ILO has been working with all spheres of the South African Government since 1994. The EIIP initiated its support to the Limpopo Province in 2000 under the Gundo Lashu Roads Programme. The ILO team provided technical assistance in advocacy, knowledge sharing and communication tools, strategies, tools and procedures – to optimize the planning, coordination, operational and implementation capacity. Support was also provided by the ILO team in developing and strengthening the Employment Intensive training capacity; delivery and expansion of Labour Intensive Construction (LIC) and Programme/Project management training; development of guidelines, publications, tools, undertaking studies and the enhancement of LIC Infrastructure Project Management and supervision through appropriate technical support.

THE EXPANDED PUBLIC WORKS PROGRAMME (EPWP)

The EPWP is a short-to-medium-term intervention of the South African Government to address the triad national challenges of unemployment, poverty and inequality through employment creation in the provision and delivery of public infrastructure works, by the application of labour-intensive methods.

The programme is coordinated by the National Department of Public Works & Infrastructure (NDPWI) and works in four sectors namely Infrastructure, Social, Environment and Culture; and Non-State Sectors.

EIIP CO-ORDINATION FOR EPWP

The team has a full complement staff consisting of a Senior Specialist, two Chief Technical Advisors, Technical / Training Advisors, National Officers and Finance & Administration Assistants.

EIIP in South Africa meets twice a year (every 6 months) to review projects/progress and update action plans.

EPWP THROUGH THE PHASES ILO/EIIP HAS SUPPORTED EPWP IN FOUR (4) PHASES

PHASE I

April 2004 to March 2009

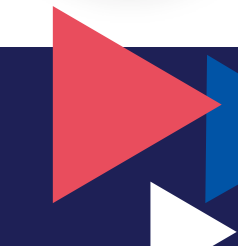
National employment:
1 million work opportunities.



PHASE II

April 2009 to March 2014

National employment:
3.5 million Work Opportunities;
924,000 Full Time Equivalents.



PHASE III

April 2014 to March 2019

National employment:
4.4 million Work Opportunities;
2.56 million Full Time Equivalents.

PHASE IV

April 2019 to March 2024

National employment target:
5.04 million Work Opportunities;
2.38 million Full Time Equivalents.

