



Investing in rural people



International  
Labour  
Office



# WHAT WORKS

In Youth Employment



CAPACITY DEVELOPMENT | IMPACT RESEARCH | POLICY DIALOGUE

# TAQEEM



# TAQEEM

## EVIDENCE TO IMPROVE YOUTH AND WOMEN'S EMPLOYMENT IN THE MIDDLE EAST AND NORTH AFRICA

**TAQEEM** ("evaluation" in Arabic) Initiative: What Works in Youth Employment is implemented in partnership with IFAD in the framework of an IFAD-financed project, titled "Strengthening gender monitoring and evaluation in rural employment in the Near East and North Africa." Through rigorous impact research, this capacity development and learning grant project aims to understand "what works" in the promotion of gender mainstreaming, with the ultimate goal of reaching gender equality in rural employment outcomes across the region.

**Taqeem supports and conducts research to build evidence for effective design and implementation of policies and programmes targeting young people and women in rural areas.** The Fund for Evaluation

is a competitive request for proposals which provides seed funding and technical assistance for impact evaluations. Since 2010, the Fund has built up a large portfolio of randomized controlled trials, improved M&E systems and events to disseminate evidence on «what works» in youth employment. Gender equality and entrepreneurship feature strongly in the research work.

### KEY TOOLS AND PRODUCTS

- Fund for Evaluation: seed funding for impact evaluations
- Research management: principle investigation, grant management, data collection and analysis
- Partnerships with research institutions and donors
- Piloting the Women's Empowerment in Agriculture Index (WEAI)



## IMPACT RESEARCH

# CAPACITY DEVELOPMENT



**Taqeem provides technical assistance and training to partners with the objective of creating a critical mass of evaluation expertise in the region.** Evaluation Clinics are workshops on M&E and impact evaluation designed to share evaluation tools and techniques and to assist project teams develop M&E and impact evaluation strategies.

## KEY TOOLS AND PRODUCTS

- Evaluation Clinics (basic and executive) to promote results based measurement and improved measurement of women's empowerment outcomes
- Technical advice on M&E project design for evaluation teams
- Knowledge sharing platform to provide users with evaluation resources such as policy briefs, data collection protocols, surveys and completed evaluation reports
- Community of Practice: an action oriented group of youth employment organizations who come together to exchange knowledge and experiences on M&E

**Taqeem disseminates findings and recommendations from impact research to policy makers and practitioners** who are using the evidence to improve programming and policy decisions. The objective is to ensure gender and rural mainstreaming in youth employment strategies.

## KEY TOOLS AND PRODUCTS

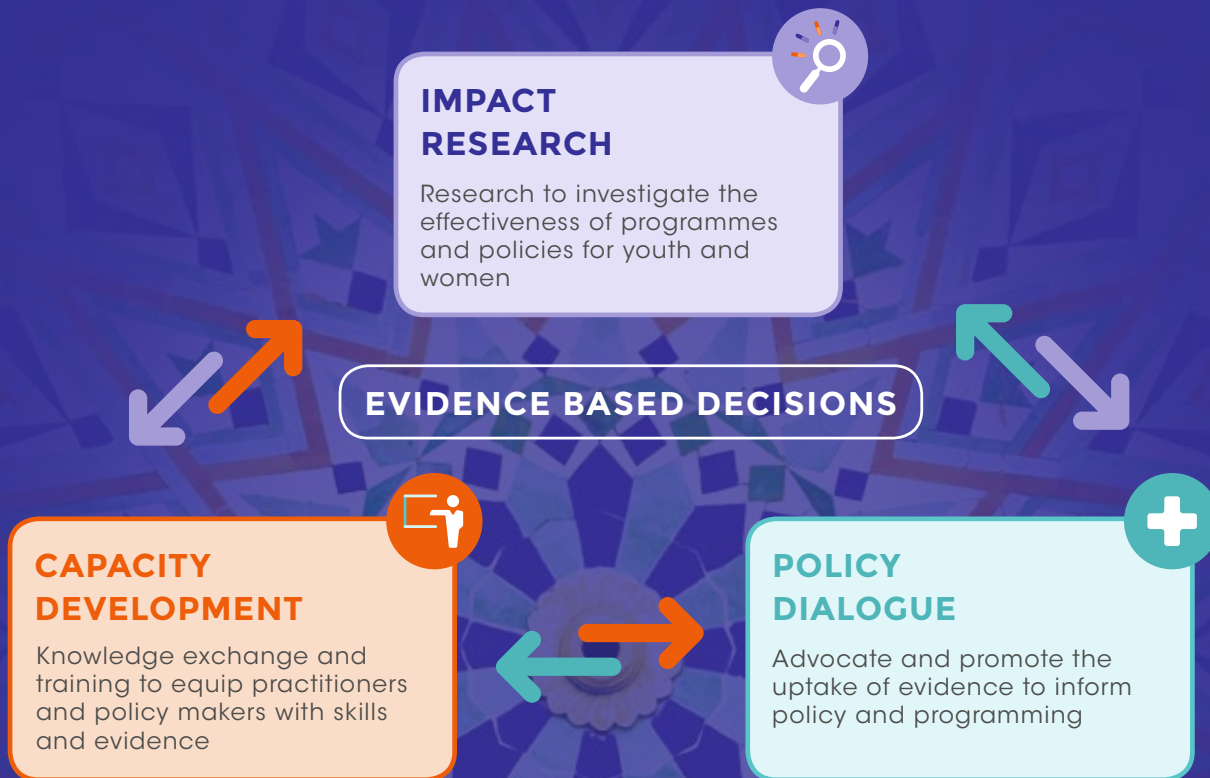
- Policy briefs
- Systematic reviews and synthesis reports
- Evidence Symposiums and Policy Labs

“ *Research and evidence are the headlights for policy makers. They tell them where to go, where to optimize and where to leverage knowledge to make their interventions and programmes more effective* ”

# POLICY DIALOGUE







## CONTACT

Youth Employment Unit  
International Labour Organization  
4 route des Morillons  
CH-1211 Genève 22  
Switzerland  
Website: [www.ilo.org/youth](http://www.ilo.org/youth)  
Email: [youth@ilo.org](mailto:youth@ilo.org)

## RESOURCES

ILO Taqeeem  
[www.ilo.org/taqeeem](http://www.ilo.org/taqeeem)  
IFAD  
<https://www.ifad.org/where/region/overview/tags/pn>  
Taqeeem Knowledge Sharing Platform  
<http://yenclinic.groupsite.com>  
What Works in Youth Employment  
[www.wwinye.org](http://www.wwinye.org)

## PARTNERS

International Fund for Agricultural Development  
Silatech  
Jacobs Foundation  
Swedish International Development Cooperation Agency  
The World Bank

