

# Measuring Unpaid Care Work in Kenya

Ms. Caroline Gatwiri Mutwiri  
Gender Statistician~KNBS

[cmutwiri@knbs.or.ke](mailto:cmutwiri@knbs.or.ke)

# OUTLINE

01

BACKGROUND

02

SURVEY OBJECTIVES

03

SURVEY METHODOLOGY

04

CHALLENGES

05

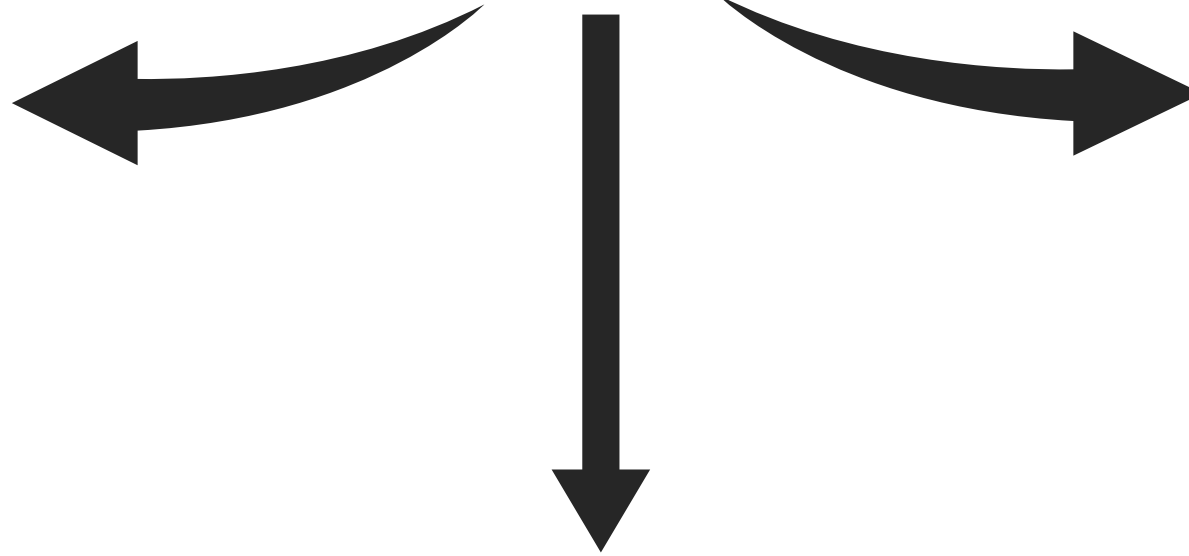
NEXT STEPS

# Background

- Gender Statistics to be held in Abijan from 24 to 28 September 2018
- Strategic plans
- Women Count Program~UN Women
- National Gender Statistics Assessment
- 2021 Kenya Time Use Survey (Modular approach)~ *1<sup>st</sup> Ever National Time Use Survey*

# Survey Objectives

Identify *gender differences in time use patterns* with special focus on paid and unpaid work activities



Provide data to *inform policy and resource allocation* to programmes that will accelerate achievement of gender equality and women's empowerment

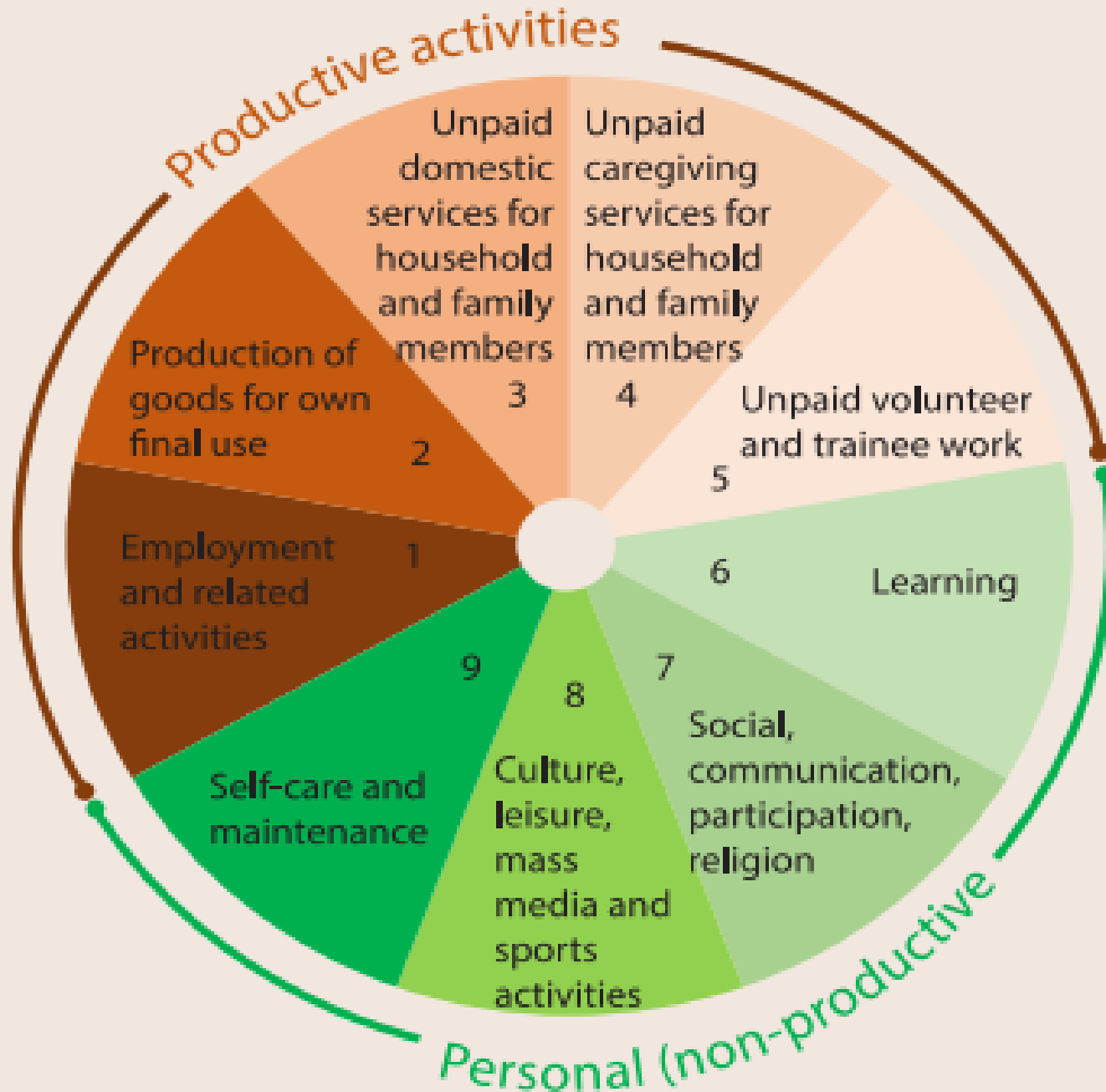
Provide data to improve on the compilation of *the contribution of household production to the National Accounts* to inform macroeconomic policies and strategies

# Summary of the Methodology.....1/2

Time Use Module	
Eligibility	<b>15 years</b> and above
Respondent Selection	<b>2</b> randomly selected per HH through KISH Grid
Diary Approach	Retrospective Diary
Reference Period	<b>Last 24 hours</b> (4am previous day to 4am day of interview)
Time Slot	60 minutes
Activity Roster	Max of <b>3</b> activities
Classification of Activities	International Classification of Activities for Time Use Statistics ( <b>ICATUS</b> ) <b>2016</b>

# Summary of the Methodology.....2/2

Parameters	2021 KCHSP
Sample design	
Survey Domains	National, 47 Counties, Rural/Urban
National	24,000 Households (1,500 Clusters)
Rural	14,976 Households (936 Clusters)
Urban	9,024 Households (564 Clusters)
Data Collection	
Field data collection teams	47 (99 Interviewers)
Data collection cycle	Quarterly
Days	24 days per quarter



## International Classification of Activities for Time Use Statistics (ICATUS) 2016

# Summary of the time use data collection tool

- Day of the week
- Time period~ *1 hour*
- Description of the activities (max 3)
- Simultaneous activities
- Code for the activities
- Duration of activities
- Contextual variables (*for whom? For payment or profit?*  
*Who was with you? Location?*)
- If the reference day was a typical day
- Gender Norms



# Challenges in implementation of KTUS

- COVID 19
- Technical challenges
- Financial resources
- Data cleaning

# Next Steps

Launch and  
Dissemination  
of the survey  
results

Further analysis

Development of  
the Care policy

Valuation of  
Unpaid Work



THE WORLD BANK



OXFAM



Thank  
You!



*[www.knbs.or.ke](http://www.knbs.or.ke)*



*Kenya Stats*



*@KNBStats*



*Kenya National Bureau of Statistics*