

International
Conference of
Labour Statisticians

11-20 October 2023

Helmut Schwarzer

Head of Unit
PFACTS/ Public Finance, Actuarial Services and Statistics
SOCPRO/Social Protection Department

Valeria Nesterenko

Data Specialist on Social Protection
PFACTS/ Public Finance, Actuarial Services and Statistics
SOCPRO/Social Protection Department

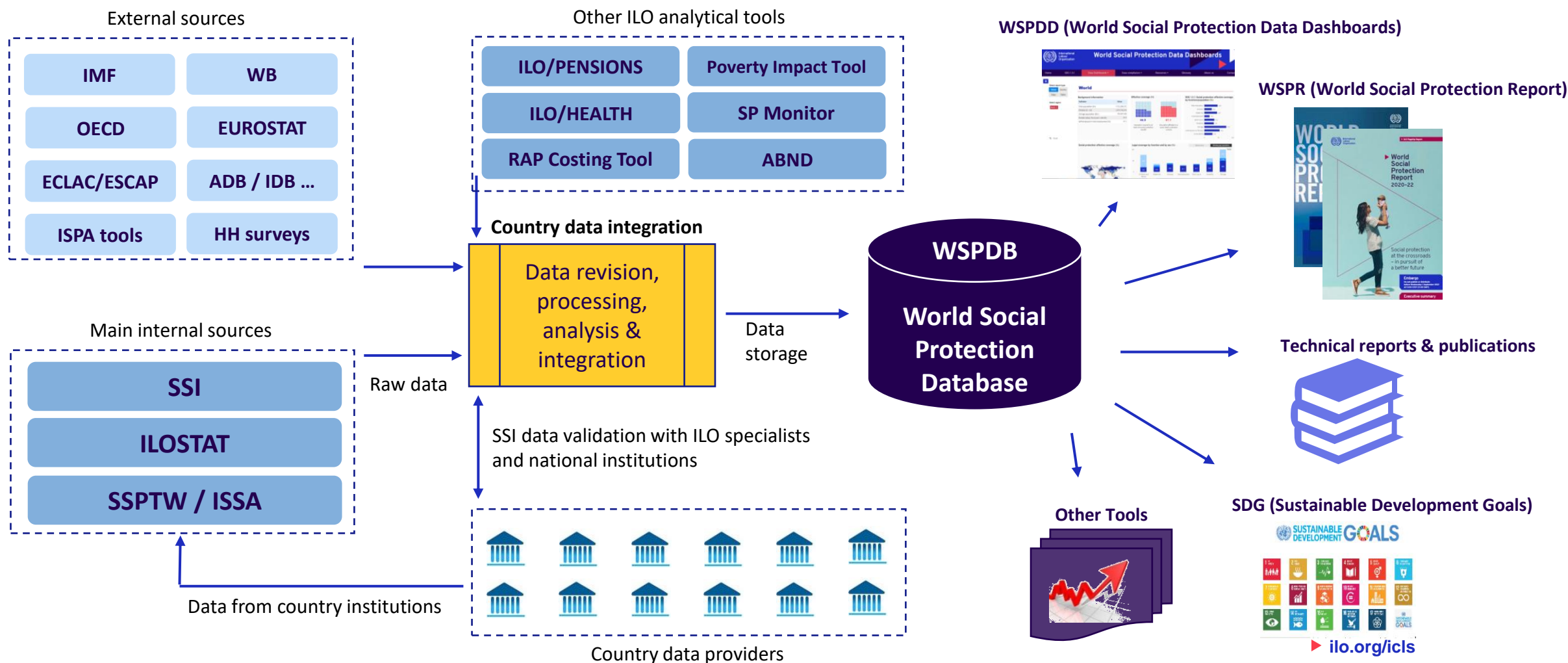
Social Protection Statistics

World Social Protection Dashboards

Overview

- ▶ Overview of the data compilation processes and progress made
- ▶ Social Protection Department products, data dissemination and communication
- ▶ Capacity building and technical meetings
- ▶ Next steps

World Social Protection Database – processes



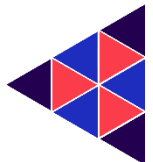


ILO/QPSS
Quantitative Platform
on Social Security

✓ Providing social security systems worldwide with robust tools to assess adequacy and sustainability

✓ ILO Innovation Award in 2022

Video



ILO/PENSIONS
Actuarial Pension Model



ILO/HEALTH
Actuarial Health Model



ILO/RAP
Rapid Assessment Protocol
Social Protection Costing Tool



ILO/SSI
Social Security Inquiry

ILO/SSI – Social Security Inquiry questionnaire

- Questionnaire is used to compile data on social protection coverage (incl. SDG 1.3.1 components); access to healthcare; indicators on benefit levels; revenue and expenditure
- Online, secured, collaborative. In English, Spanish, French, Portuguese, and Arabic (upcoming)
- Used to assess the SDG 1.3.1 since 2016.
- Currently with 100+ country-surveys



User management Survey management Instructions Schemes & Benefits Additional info Logout socprodata@ilo.org Language

Inventory of Schemes

[New](#)
[Delete](#)
[Share survey access](#)
[Export survey](#)
[Reviewed](#)
[Help](#)
[Edit](#)
[Save](#)

#	Scheme name	Administrative organization	Contributory or not
1	Old Age Grant	South African Social Security Agency	Non-contributory
2	Disability Grant	South African Social Security Agency	Non-contributory
3	War Veterans Grant	South African Social Security Agency	Non-contributory
4	Government Employees Pension Fund	Government Pensions Administration Agency	Contributory
5	Unemployment Insurance	Unemployment Insurance Fund	Contributory
6	Sickness (social insurance)	Unemployment Insurance Fund	Contributory
7	Maternity (social insurance)	Unemployment Insurance Fund	Contributory
8	Social grants	South African Social Security Agency	Non-contributory
9	Employment Injury (employer liability)	Compensation Fund	Contributory
10	Sickness/family responsibility (employer liability)	Department of Labour	Non-contributory
11	Primary care/medical benefits	Ministry of Health	Non-contributory
12	Expanded Public Works Programme (EPWP)	Department of Public Works (DPW)	Non-contributory
13	National School Nutrition Programme (NSNP)	Department of Basic Education (DBE)	Non-contributory

Scheme Information

[Characteristics](#)
[Contributors](#)
[Beneficiaries](#)
[Revenue and expenditure](#)

Scheme name in English: Government Employees Pension Fund
 Scheme name in original language:

Administrative organization: Government Pensions Administration Agency
 Public or private administration: Public

Contributory: Contributory
 Mandatory or voluntary (if contributory): Mandatory

Type of programme: Social insurance
 Legal Status: Anchored in national legislation

Functions covered: Survivors, Old Age

Provisions on equality of treatment between nationals and non-nationals? No
 Affiliation of non-nationals is a part of: -- Choose option --

Benefits under the scheme

[Characteristics](#)
[Contributors](#)
[Beneficiaries](#)
[Payment of benefits and expenditure](#)
[Eligibility criteria](#)

	A	B	C	D	E	F	G	H	I	J
1										
2	Benefit under this scheme	Name of the benefit in English	Name of the benefit in original language	Function Covered	Is the function applicable to non-nationals?	Population groups legally covered (as insured contributors or entitled beneficiaries)				Contributory / non-contributory
3				select from the list	select from the list	Population groups selected from the list	by age group selected from the list	by geo area selected from the list		select from the list
4	Benefit 1	Pensions (Old)		Old age		Public sector employees, Public sector employees	Elderly	All areas		Contributory
5	Benefit 2	Resignation Benefit		Other (indicate notes)		Public sector employees, Public sector employees	Working age	All areas		Contributory
6	Benefit 3	Orphan's Annuity		Survivors		Public sector employees, Public sector employees	Children	All areas		Contributory
7	Benefit 4	Death Benefits		Survivors		Public sector employees, Public sector employees	All ages	All areas		Contributory
8	Benefit 5	Funeral Benefits		Survivors		Public sector employees, Public sector employees	All ages	All areas		Contributory
9	Benefit 6									

Data are analysed, supplemented by indicators from other organisations, **SDG indicators are produced and sent to the countries for validation**

February

SDG indicator 1.3.1 is reported to UNSD

Indicators are included into the **World Social Protection Report** and other ILO publications



SSI data compilation cycle

New annual cycle for appx. 60 countries

SSI questionnaire/request sent to the Ministry of Labour/other

Questionnaire shared with relevant agencies and the work on the **SSI is ongoing at the country level**

ILO receives the **questionnaire completed**

ILO specialists (field and HQ) **review and validate** data received and discuss with the country if necessary

► Indicators, including SDG 1.3.1:



Indicator 1.3.1: Proportion of population covered by social protection floors/systems, by sex, distinguishing children, unemployed persons, older persons, persons with disabilities, pregnant women, newborns, work-injury victims and the poor and the vulnerable

1. Total population covered by social protection systems/floors
2. Share of children receiving social protection benefits
3. Share of women receiving maternity benefits
4. Share of older persons receiving old-age pensions *and share of the labour force contributing to a pension scheme*
5. Share of persons with disabilities receiving benefits
6. Share of the unemployed receiving unemployment benefits
7. Share of labour force covered by employment injury schemes
8. Share of the poor covered by social protection systems
9. Share of the vulnerable covered by social protection systems.

+

10. **Total Expenditure** on social protection as % of GDP, by guarantee

+ 49 indicators on legal and effective coverage by cash and in-kind benefits; financing and level of benefits' adequacy

World Social Protection Report - flagship

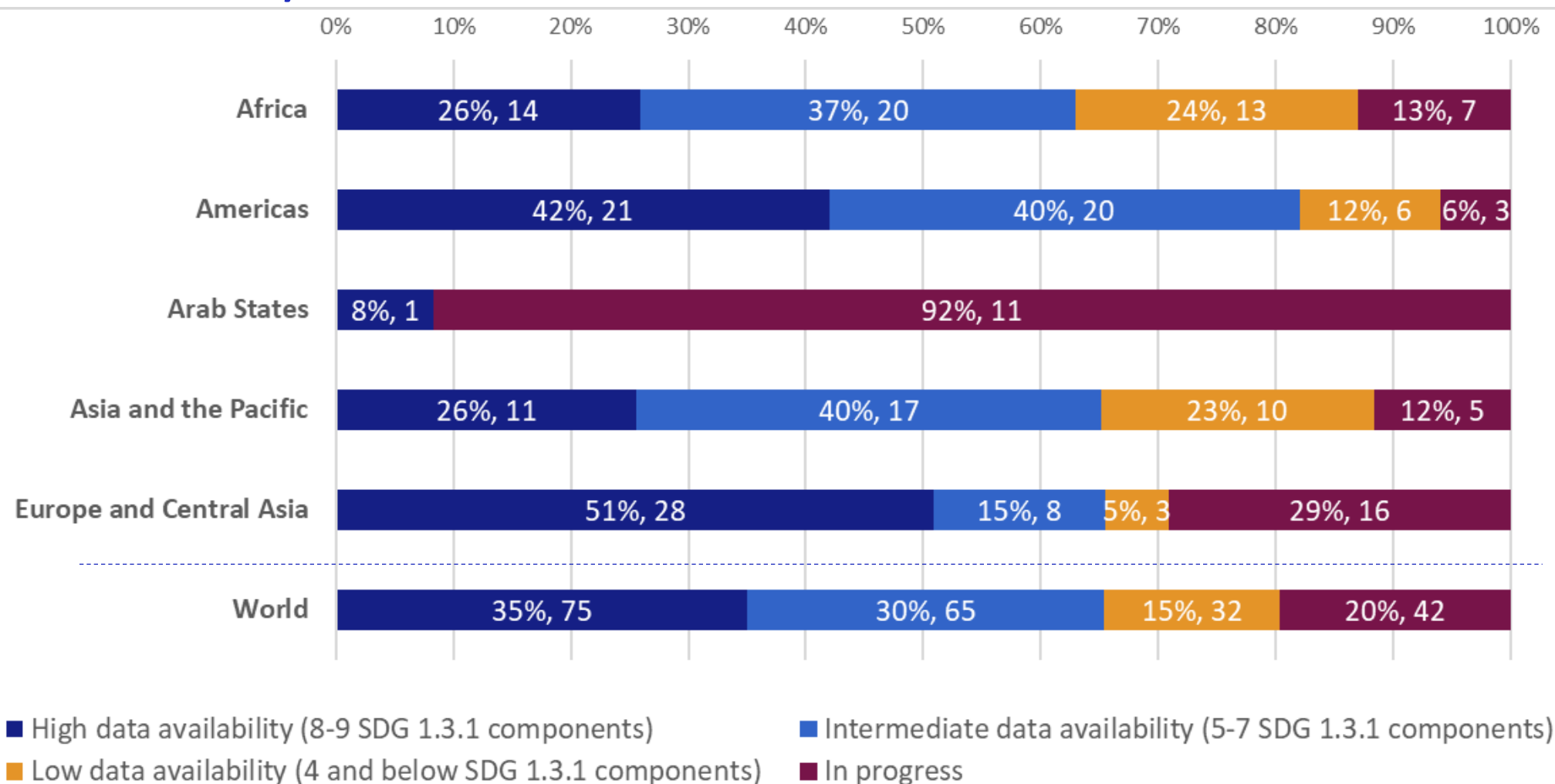


- ▶ Gives a global overview of recent developments in social protection systems, including social protection floors, following a life-cycle approach.
- ▶ Covers the impact of the COVID-19 pandemic.
- ▶ Identifies critical protection gaps.
- ▶ Sets out key policy recommendations, and how to achieve the 2030 SDGs.
- ▶ Based on improved statistical data (available online in the World Social Protection Database) with greater country coverage compared to previous edition.
- ▶ Five regional companion reports

World Social Protection Report data availability - progress made between 2017 and 2020 reports on SDG 1.3.1 components

	WSPR 2017–19	WSPR 2020–22	WSPR 2023–25
Overall coverage	72 countries	161 countries	n/a
Older persons	138 countries	174 countries	n/a
Unemployed	75 countries	165 countries	n/a
Mothers with newborns	66 countries	149 countries	n/a
Employment injury	-	149 countries	n/a
Vulnerable population	65 countries	141 countries	n/a
Persons with severe disabilities	71 countries	133 countries	n/a
Children	60 countries	118 countries	n/a

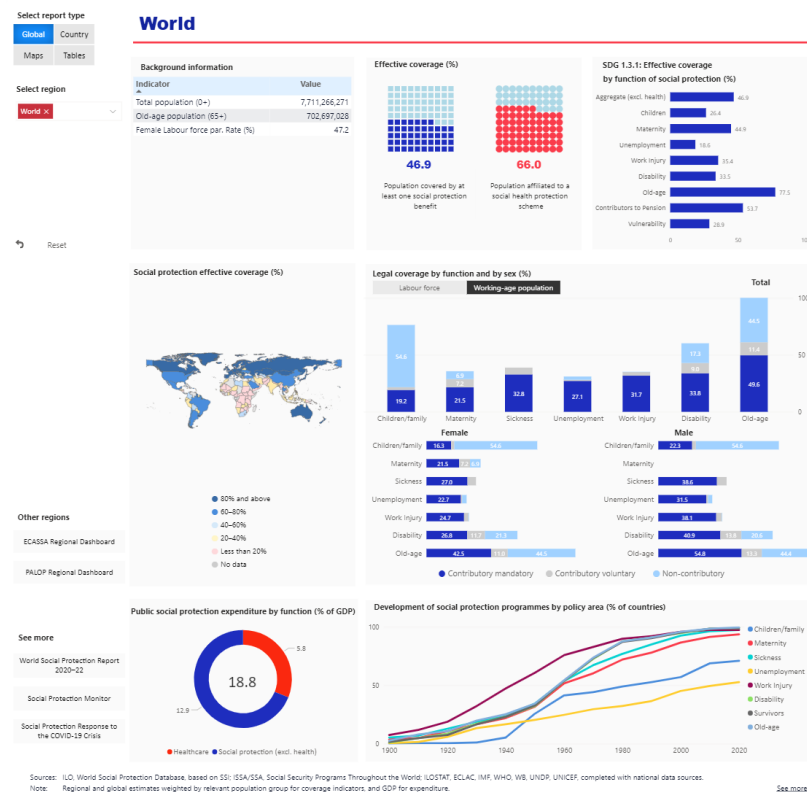
2024 World Social Protection Report data availability – current status (214 countries and territories)



- Updated since the latest WSPR (2021) – so far 135 countries
- High and intermediate data availability – 140 countries
- Low data availability – 32 countries
- In progress – 42 countries
- ISSA update (as from April)

World Social Protection Dashboards (WSPDB)

<https://www.social-protection.org/gimi/WSPDB.action?id=32>



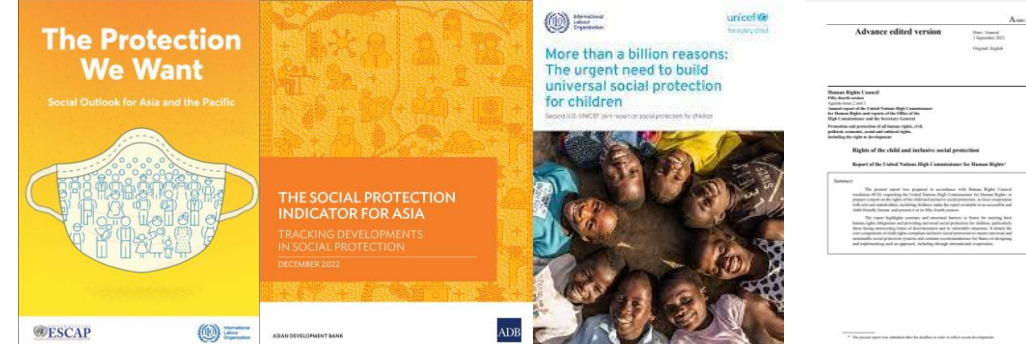
Social Protection Monitor Dashboards (SPM)

<https://www.social-protection.org/gimi/ShowWiki.action?id=3426>



Other reports, tools and topics under development

- **Collaboration and data exchange:** with ISSA, ITC-ILO, Department of Statistics, field colleagues from multiple departments, Regional Organizations, IMF, UNICEF, OECD, etc.
- **Topics under development:** disaggregation by sex for old age coverage indicators, nationals/non-nationals, adequacy of level of benefits, more disaggregated expenditure data
- **Regional reports in collaboration with other organizations:**
 - ADB/ILO: [The Social Protection Indicator for Asia: Tracking Developments in Social Protection](#)
 - UNESCAP/ILO: [The protection we want: social outlook for Asia and the Pacific](#)
 - UNICEF/ILO: [More than a billion reasons: The urgent need to build universal social protection for children](#)
 - OHCHR/ILO: [Report to the Human Rights Council on the Child Rights and Inclusive Social Protection](#)
- **Self-guided training package** (4 modules) in two languages (English, French) on social protection statistics and have implemented it in several regions and a promotional video on the SSI and SDG monitoring
- **Guide on Building National Systems on Social Protection Statistics, including 4 self-guided training modules** (pilots in Egypt and Namibia)
- **National statistical bulletins on social protection:** Cabo Verde (the first edition was published in 2022) and Mozambique (fourth edition was published in 2022). First statistical bulletins and dashboards on social protection in other countries (e.g. Guinea-Bissau, Angola, Jordan, Togo, Ecuador, etc.)



Capacity building

- Regional trainings in the past years:
 - 3 regional trainings (hybrid) were held in Africa (in English, French and Portuguese) in support of the Africa Regional Social Protection Strategy, 2021-2025, with participation of 91 participants from 32 countries (collaboration with ITC)
 - Training in Asia and the Pacific in 2019 (10 countries)
 - Upcoming training in the Arab States and in the Caribbeans
- National trainings: multiple webinars and workshops – since 2019 in 60 countries, including 38 in Africa, 13 in the LAC, 7 in Asia and the Pacific, and 1 in Europe and in the Arab States (*e.g. Ghana, Nigeria, **Togo**, **Senegal**, Ecuador, Colombia, El Salvador, Belize, India, Thailand, **Jordan**, **PALOP countries**, etc).*
- Other trainings /presentations that included SP monitoring:
 - Social Security Academy 2023 (37 participants from 20 countries)
 - Labour Statistics Academy
 - Preparatory meeting for the 21st ICLS (Africa)
 - ADB Social Protection meeting
 - Trainings of actuaries on data compilation for pension and health actuarial valuations – 40 countries



► Further capacity building and activities to strengthen social protection statistics around the world

- Massive data compilation exercise in the countries (SSI) and validation with specialists and countries – to be finalized this year
- Data processing and analysis (as of September)
- Additional data compilation (e.g. health coverage indicators, expenditure, level of benefits, etc.) + UNICEF/WFP school feeding
- Update of the dashboards (mid-2024)
- Further work with ISSA on the extension of legal info used; classification and analysis of ISSA data - ongoing
- Further automatization of the processes
- Finalization of the guide on building national systems of SP statistics (January 2024)
- Update on ILOSTAT (February 2024)
- Country support: Social protection questions/module in LFS; trainings
- Building National Systems on Social Protection Statistics: Capacity-building and technical assistance