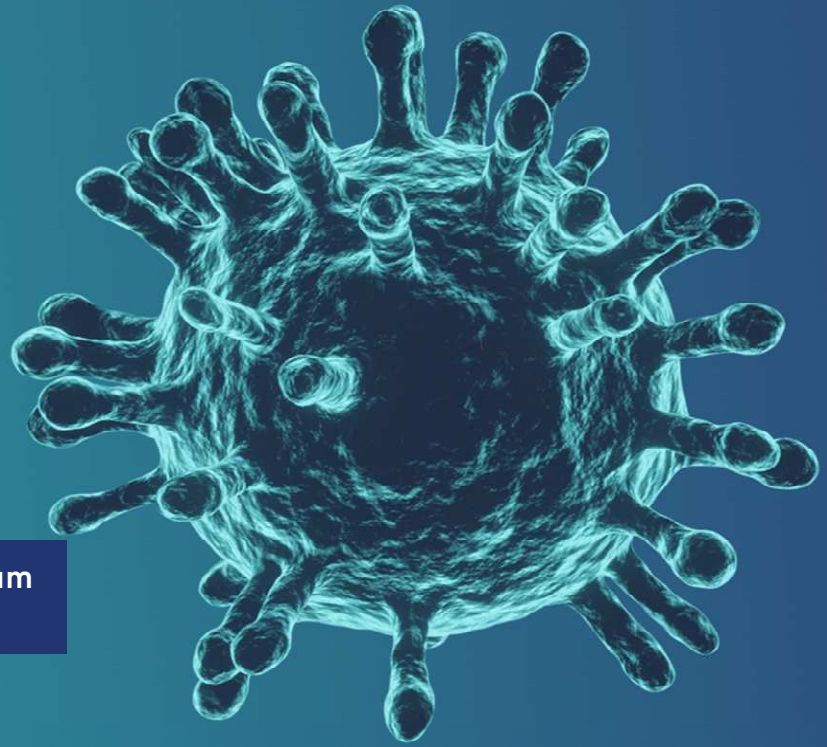




International Labour Organization



▶ Building resilience during and after the COVID-19 pandemic



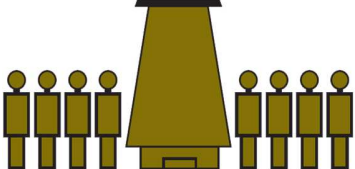
For Micro, Small and Medium Enterprises (MSME)

Business Advisory Note: Creating a COVID-19 safe business environment (Part 2)

Developed in partnership with:



Ministry of Commerce, Trade, Tourism and Transport



Fiji Commerce & Employers Federation

In this advisory note:



Includes:
Simplified actions, web links

- ▶ What businesses fall under essential and supporting industries and allowed to operate?
- ▶ What are high risk businesses?

► What business fall under essential and supporting industries and allowed to operate?

On 21st June 2021, MCTTT announced an **ESSENTIAL BUSINESS AND INDUSTRY SUPPORT SERVICES LIST**, only applicable to the lockdown/containment areas. Some examples of essential business that can operate in containment areas in line with COVID safe protocols are:

- *Local produce and municipal markets*
- *Supermarkets and shops selling foods and other essential items*
- *Transport Service;*
- *Construction (formal and informal), professional and all auxiliary services*
- *Restaurants – for takeaway and delivery services only.*



Support industries to the essential businesses may also operate in containment areas in line with COVID safe protocols. Some examples of these support industries are:

- *Plumbing Services – on-call services;*
- *Electrical Services – on-call services;*
- *Air-conditioning Services – on-call to support essential services;*
- *Tyre and Vehicle spare parts Suppliers - on-call to support essential services;*
- *Lawn maintenance and mowing – only for on-call services;*
- *Mechanical Services - on-call services;*
- *Upholstery – for vehicles only;*
- *Car wash – must provide vehicle sanitisation service;*

The list of businesses is subject to review (modification, additional or removal) in considering the changing health and safety circumstances. For more detailed information including full list of essential business and support industries visit:

<https://www.mcttt.gov.fj/wp-content/uploads/2021/06/Essential-Business-and-Support-Industries-FINAL-as-at-210621.pdf>

► What are high risk businesses?

Businesses that are classified as high risk, must not operate anywhere. These businesses include Gyms, Movie theatres, Video gaming shops, Cyber cafes, Taverns and bars, Billiard shops, Amusement arcades, Spas, beauty therapy, massage therapy venues, saunas, and Tattoo parlours.



Source:

[MCTTT-Essential-Business-and-Support-Industries](https://www.covidpass.mcttt.gov.fj)

www.covidpass.mcttt.gov.fj

Informal Economies Recovery Project

Implemented jointly by:

International Labour Organization (ILO)

United Nations Educational, Scientific and Cultural Organisation (UNESCO)

United Nations Development Programme (UNDP)

International Fund for Agricultural Development (IFAD)

<https://pacific.un.org/index.php/en/131555-un-mptf-informal-economies-recovery>



UN COVID-19 Response
and Recovery Fund
#RecoverBetterTogether