



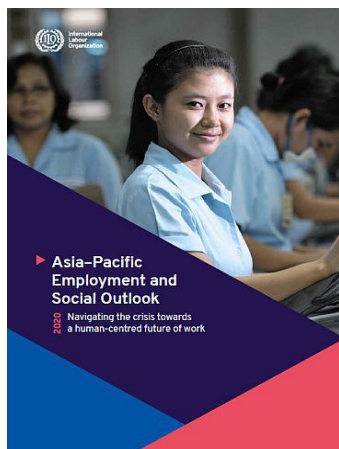
International
Labour
Organization

LIST OF LIBRARY

ILO Country Office for the Philippines (CO-Manila)

Catalogue of New Publications

April 2021



Asia-Pacific employment and social outlook 2020: Navigating the crisis towards a human-centred future of work

The report presents an assessment of the impact that the COVID-19 pandemic has had so far on employment and labour markets in the most populous and

dynamic region of the world. With economic growth in the Asia and Pacific region weakening in 2019, the current crisis has hit economies, enterprises and workers in the region.

Full report: [Asia-Pacific Employment and Social Outlook 2020: Navigating the crisis towards a human-centred future of work \(ilo.org\)](https://www.ilo.org/publications/asia-pacific-employment-and-social-outlook-2020)

Publisher: ILO-Regional Office for Asia and the Pacific

Skills development in the time of COVID-19: Taking stock of the initial responses in technical and vocational education and training

The report was based on the findings of an interagency survey on technical and vocational education

and training (TVET) and skills development in the time of COVID-19.

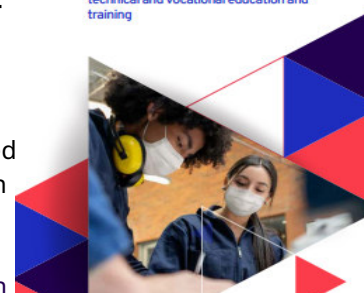
[https://www.ilo.org/skills/areas/skills-training-for-poverty-reduction/WCMS_766557/lang--en/index.htm](https://www.ilo.org/skills/areas/skills-training-for-poverty-reduction/WCMS_766557/lang-en/index.htm)

Publishers: ILO-Employment Policy Department, World Bank and UNESCO



► Skills development in the time of COVID-19:

Taking stock of the initial responses in technical and vocational education and training



The likely impact of COVID-19 on the achievement of SDG 8: The role of trade unions

The report presents the findings of a global survey on the likely impacts of COVID-19 on the 2030 UN Sustainable Development Agenda. The survey focused on SDG 8 and specifically

on four targets and two indicators for which the International Labour Organization (ILO) is a custodian agency.

[https://www.ilo.org/actrav/info/pubs/WCMS_770036/lang--en/index.htm](https://www.ilo.org/actrav/info/pubs/WCMS_770036/lang-en/index.htm)

Publisher: ILO-Bureau for Workers' Activities (ACTRAV)

Domestic workers and decent work in Sri Lanka

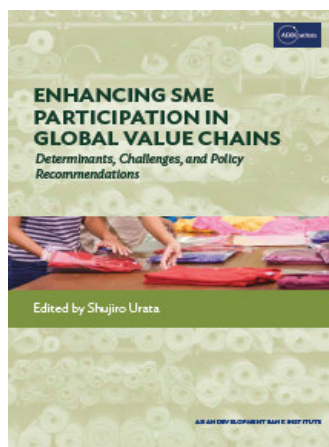
In response to a Government of Sri Lanka request, the report highlights key findings from a study which examined the living and working conditions of

domestic workers and assessed the current legal and policy gaps to ratify ILO's Decent Work for Domestic Workers Convention (No 189).

[https://www.ilo.org/colombo/whatwedo/publications/WCMS_768671/lang--en/index.htm](https://www.ilo.org/colombo/whatwedo/publications/WCMS_768671/lang-en/index.htm)

Publisher: ILO-Country Office for Sri Lanka and the Maldives





Enhancing SME participation in global value chains: Determinants, challenges and policy recommendations

The Asian Development Bank Institute identifies the successful factors and impediments for SME participation in global value chains (GVCs) by using the

results of a questionnaire survey of SMEs in four Asian countries—Kazakhstan, Papua New Guinea, Philippines and Sri Lanka. The study finds that competitiveness and connectivity are two key factors for successful participation in GVCs.

<https://www.adb.org/sites/default/files/publication/682891/adb-book-enhancing-sme-participation-global-value-chains.pdf>

Publisher: Asian Development Bank Institute (ADBI)

COVID-19 and rising wage inequality: Trends and challenges in Thailand and Viet Nam

This brief presents quantitative trends in wage inequality in Thailand and Viet Nam during the COVID-19 crisis in 2020. Based on various measures, it highlights the rise of inequality as wages have been increasingly concentrated among the highest wage earners and the disproportionate impact of lower wages on informal workers, youth and workers with lower educational qualifications.

https://www.ilo.org/asia/publications/issue-briefs/WCMS_767475/lang--en/index.htm

Publisher: ILO-Geneva



For further information, visit:

www.ilo.org/manila

Information on Labordoc is available at:

<http://www.ilo.org/public/english/support/lib/labordoc/index.htm>