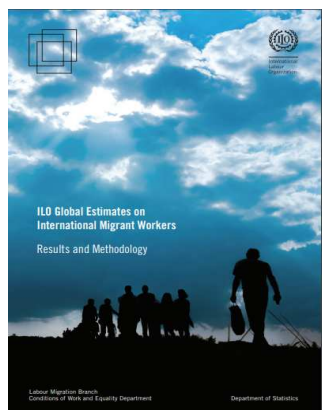


LIST OF LIBRARY ACCESSIONS

ILO Country Office for the Philippines (CO-Manila)
Catalogue of New Publications
December 2018



International
Labour
Organization



ILO global estimates on international migrant workers: Results and Methodology. Second edition

In this report, the term "international migrants" refers to persons who are foreign-born (or foreign citizens when place-of-birth information is not available), while the term

"migrants of working age (15 years of age and over)" is a subset of international migrants.

https://www.ilo.org/wcmsp5/groups/public/---dgreports/---dcomm/---publ/documents/publication/wcms_652001.pdf

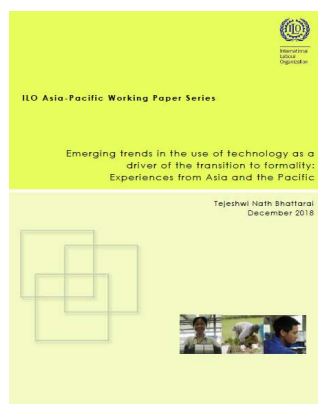
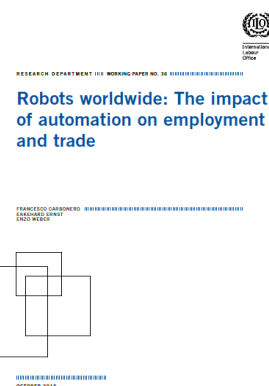
Publisher: ILO-Geneva

Robots worldwide: The impact of automation on employment and trade

The impact of robots on employment and trade is a highly discussed topic in the academic and public debates. There are concerns that automation may threaten jobs in emerging countries given the erosion of the labour cost advantage. We provide evidence on the effects of robots on worldwide employment, including emerging economies. Robots turn out to have a statistically significant negative impact on worldwide employment.

https://www.ilo.org/wcmsp5/groups/public/---dgreports/---inst/documents/publication/wcms_648063.pdf

Publisher: ILO-Geneva



Emerging trends in the use of technology as a driver of the transition to formality: Experiences from Asia and the Pacific

The working paper examines "e-formality" approaches in the Asia Pacific region. It provides an inventory of current of public initiatives, programmes and policies

that have incorporated the use of technology and have either directly or indirectly become vehicles for increased formalization or the transition towards it.

https://www.ilo.org/wcmsp5/groups/public/---asia/---ro-bangkok/---sro-bangkok/documents/publication/wcms_655243.pdf

Publisher: ILO-Regional Office for Asia and the Pacific

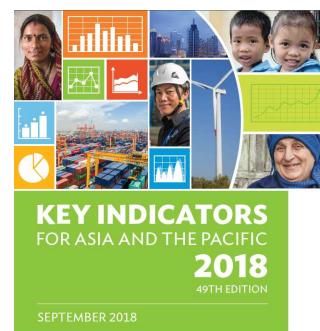
Key indicators for Asia and the Pacific, 2018

This statistical report provides the latest available economic, financial, social and environmental data for the 48 regional members of ADB. This year's data shows that Asia and the Pacific accounts for a growing share of global

GDP, while the labour force is steadily shifting away from agriculture towards employment in industry and services.

<https://www.adb.org/sites/default/files/publication/443671/ki2018.pdf>

Publisher: Asian Development Bank (ADB)



ASIAN DEVELOPMENT BANK





Game changers: Women and the future of work in Asia and the Pacific

The report highlights practical and impactful measures for women and men alike – to achieve gender equality and build a future of work that upholds the bold aspirations, dynamism and rich culture of this region and its peoples. To accelerate progress, we need more

strategic actions, partnerships and champions within governments, workers' and employers' organizations, as well as other stakeholders across the region.

https://www.ilo.org/wcmsp5/groups/public/---asia/---ro-bangkok/---sro-bangkok/documents/publication/wcms_645601.pdf

Publisher: ILO-ROAP

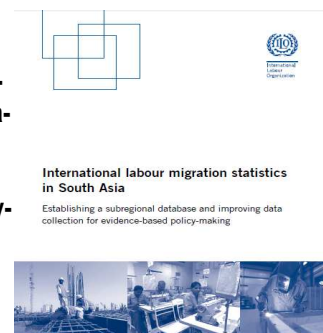
International labour migration statistics in South Asia: Establishing a subregional database and improving data collection for evidence-based policy-making

The report compiles the data that exist on labour migration and migrant workers in South Asia, highlights

many challenges and limitations in the current statistical framework, and provides concrete recommendations on how data collection and analysis can be strengthened in the subregion.

https://www.ilo.org/wcmsp5/groups/public/---asia/---ro-bangkok/---sro-new_delhi/documents/publication/wcms_645286.pdf

Publishers: ILO-Decent Work Technical Support Team for South Asia and Country Office for India



For further information, visit:

www.ilo.org/manila

Information on Labordoc is available at:

<http://www.ilo.org/public/english/support/lib/labordoc/index.htm>