



# Access to Entrepreneurship, Skills Training and Business Development Services

*South-South Expert Knowledge Sharing Forum on Policy Innovations and Lessons Learned on Enterprise Formalization*

*Hotel Jen Manila, Roxas Boulevard, Pasay City  
16 July 2018*

# Definition of Livelihood

---

**Livelihood** refers to any kind of legitimate economic activity that will serve as stable source of income for the members of a community - *(Department Order 173-17)*.

“a livelihood is **sustainable** when it can cope with and recover from stress and shocks, maintain or enhance its capabilities and assets, and provide sustainable livelihood opportunities for the next generation”

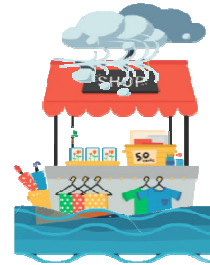
(R. Chambers & G. Conway, 1992, Sustainable rural livelihoods: practical concepts for the 21st century. IDS Discussion Paper No. 296. adapted by the UNDP, UK Oxfam, and Cooperative for Assistance and Relief (CARE))

# Barriers to Growth and Transition of Livelihood Projects into Formal and Sustainable Enterprises

---



**High cost of doing business**



**Vulnerability to risks**



**Lack of access to market**



**Lack of access to finance**



**Lack of access to entrepreneurship, skills training and business development services**

# Thrust Towards Enterprise Formalization

## Livelihood and Enterprise Development

Expand economic opportunities in Industry and Services through Employment and Business/Livelihood

✓ *Implement the MSME Development Plan taking into account the 2017-2022 Livelihood Agenda*

Reduce vulnerabilities of individuals to risks

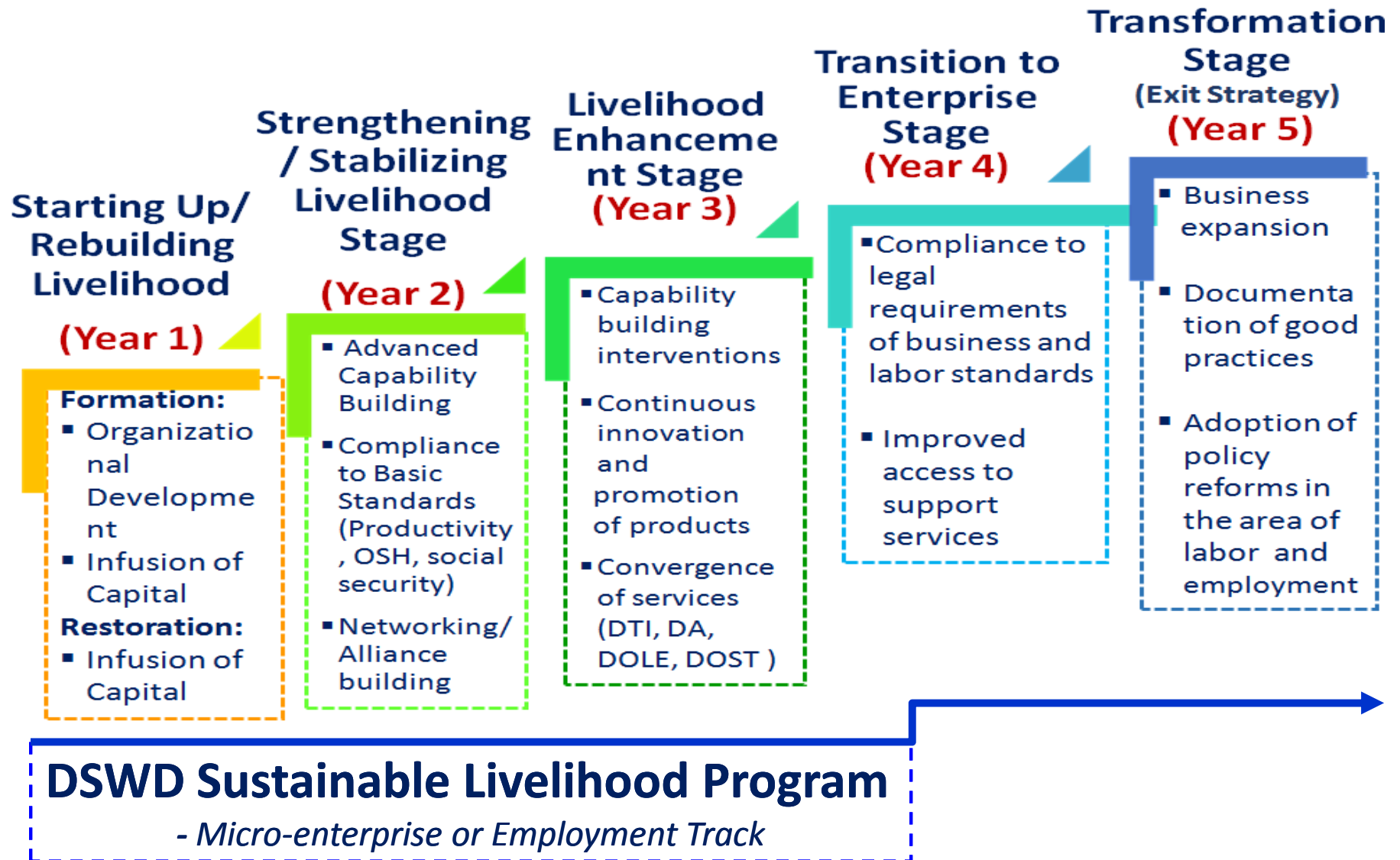


## Philippine Development Plan (Goal)

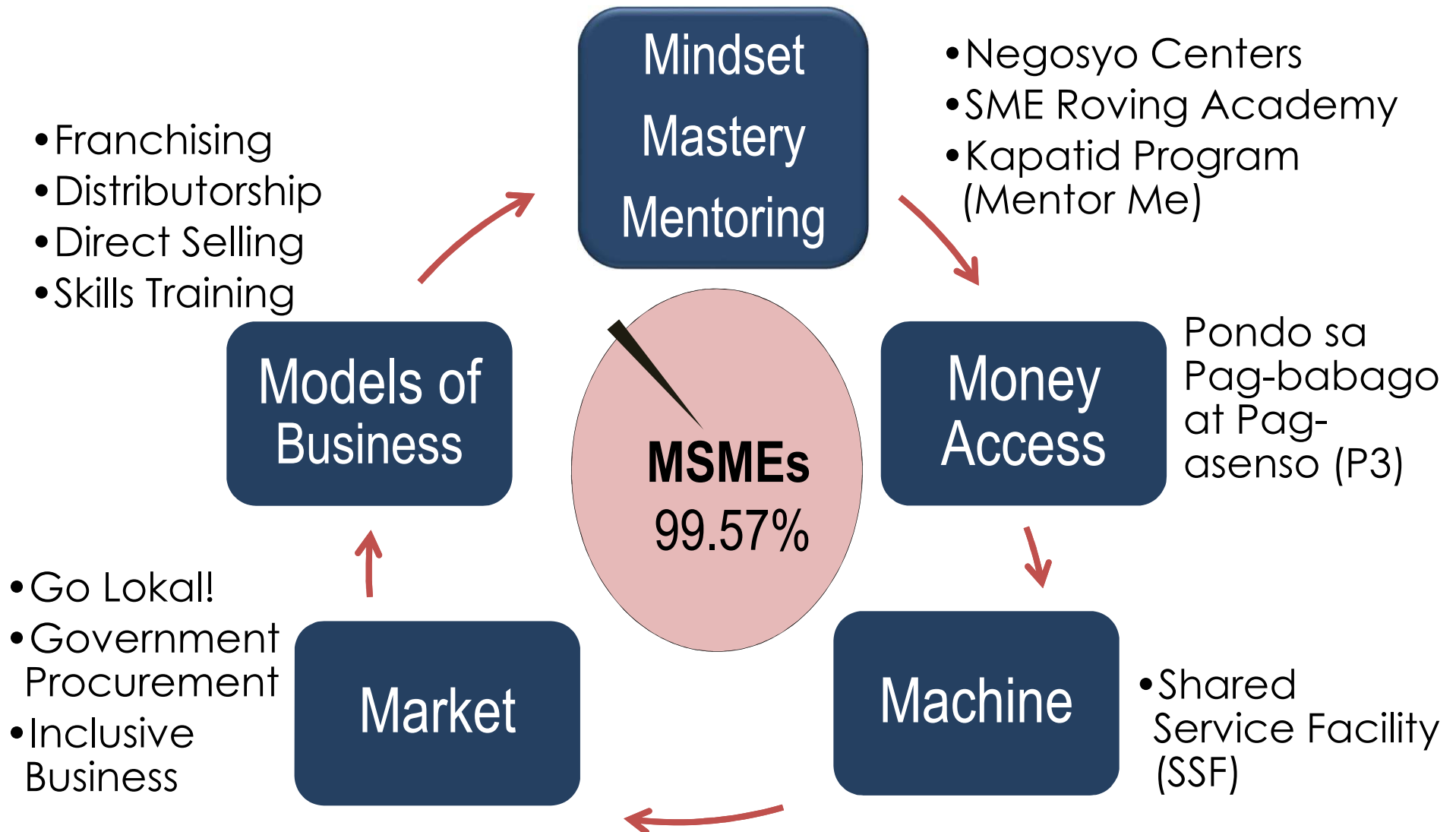
- Inclusive growth
- Reduce poverty incidence from **21.6%** in 2015 to **14.0%** by 2022
- More resilient economy

# DOLE Integrated Livelihood Program

## - *Sustainable Livelihood Framework (SLF)*



# DTI's 7Ms for MSME Development



# Way Forward

---

**Continuous  
implement  
ation of  
the DOLE  
Sustainabl  
e  
Livelihood  
Framework**

**Implement  
ation of  
the MSME  
Developme  
nt Plan**

**Adoption  
of a  
National  
Livelihood  
Framework**

**Policy  
support  
towards  
enterprise  
formalizatio  
n**



Thank You!

