



International
Labour
Organization

Social security standards Situation in ASEAN

Celine Peyron Bista

Chief Technical Advisor on Social Protection
ILO Regional Office for Asia and the Pacific

Bogor, 6 March 2017



ILO's norms for implementing the right to SS

C 118 Equality of Treatment (Social Security) Convention, 1962

C 157 Maintenance of Social Security Rights Convention, 1982

C.102 Social Security (Minimum Standards) Convention, 1952

R67 Income Security Recommendation,
1944

R69 Medical Care
Recommendation, 1944

C 19
Equality of
Treatment
(Accident
Compensation),
1925

C 121
Employment
Injury Benefits
Convention,
1964

C 128
Invalidity,
Old-Age and
Survivors'
Benefits
Convention,
1967

C 130
Medical Care
and Sickness
Benefits
Convention,
1969

C 168
Employment
Promotion and
Protection
against
Unemployment
Convention,
1988

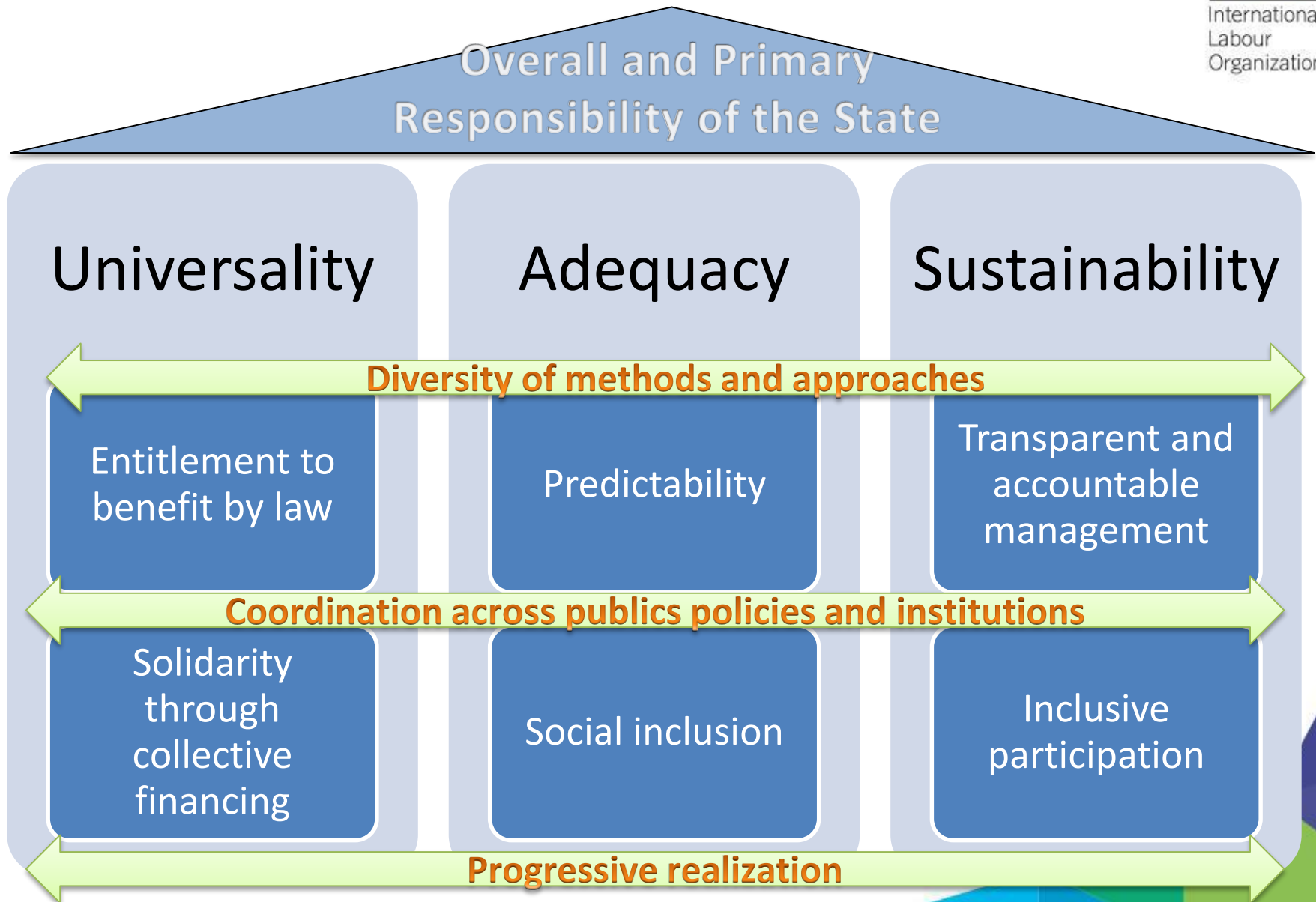
C 183
Maternity
Protection
Convention, 2000

R. 202 Social Protection Floors Recommendation, 2012 (No. 202)

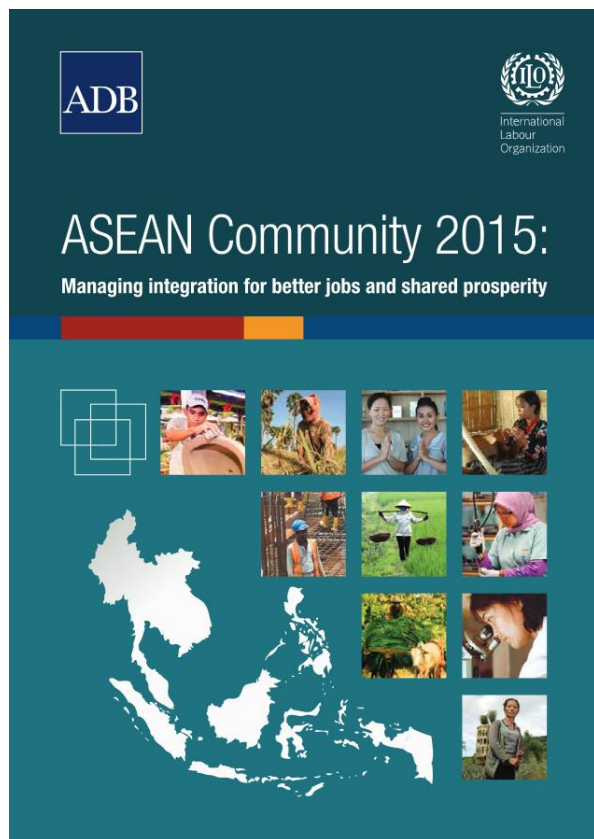
Convention No. 102

- Regroups the **nine classical social security contingencies** into a **single comprehensive and legally binding instrument**.
- Serves as a **benchmark and reference**
- Sets out principles that guide the **design, financing, governance and monitoring** of national social security systems

Guiding international principles



The ASEAN context



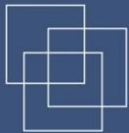
- 92 million do not earn enough to escape poverty
- Economic and social diversity
- Common trends

The impact of the AEC

- ✓ Stimulus to innovation and productivity
- ✓ 14 million jobs
- ✓ Inequality



The state of social protection in ASEAN at the dawn of integration

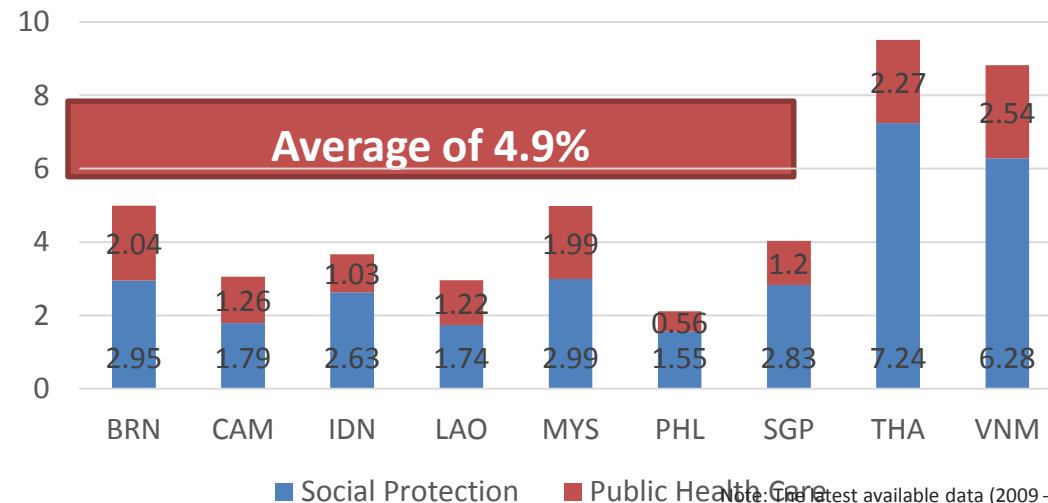


International
Labour
Organization

<http://www.social-protection.org/gimi/gess/ShowResource.action?resource.resourceId=53336>

Low levels of Public Expenditure on Social Protection

Social protection expenditure (% GDP)



Note: The latest available data (2009 - 2012) Source: Data from ILO (2015)

A&P developing countries 5.0%
Africa developing countries 5.1%

Diversity between countries:

- Thailand (9.5%) and Vietnam (8.8%)
- Philippines (2.1%); Lao (2.9%) Cambodia 3.1%

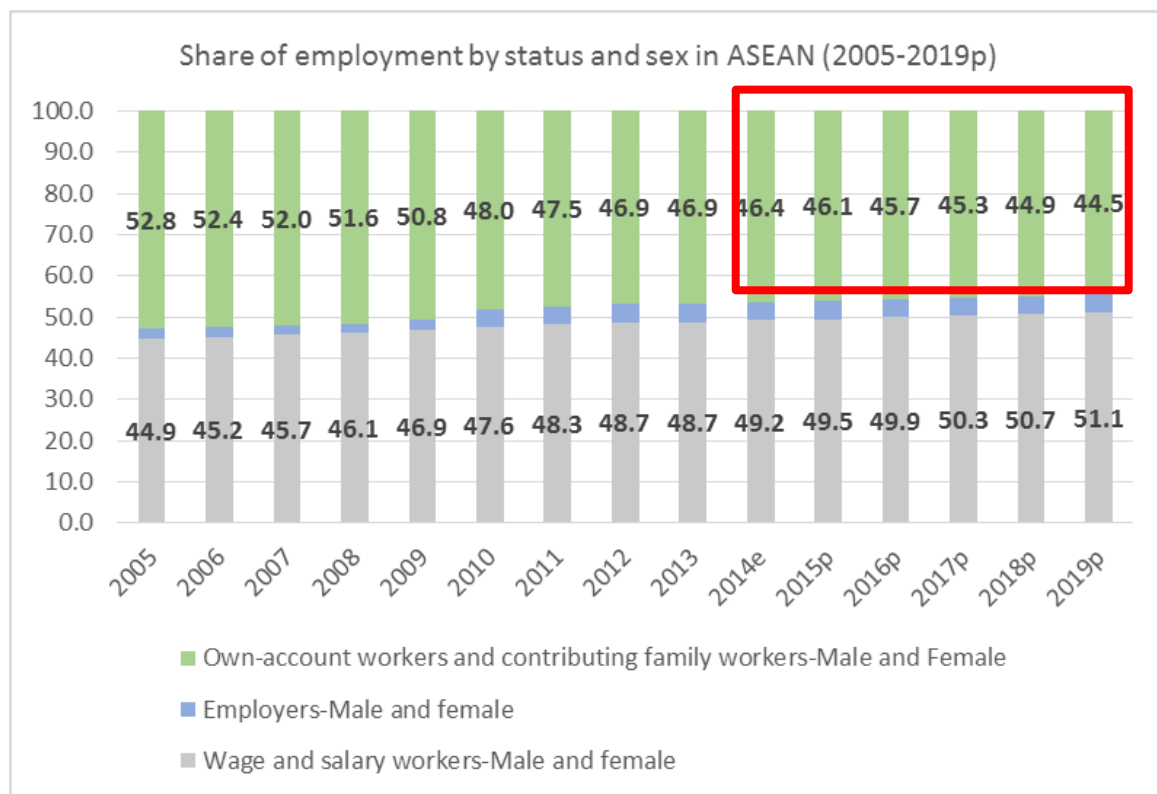
Some progress

- New branches
- Increased coverage
- Increased fiscal space (universal schemes)
- Better understanding of:
 - the impact of inequality
 - the costs of lack of social protection



Large shares of the population still excluded

Employment status in ASEAN countries



Contributory schemes are not adapted

Coverage of non-contributory schemes still very limited

Source: World Employment and Social Outlook, ILO, 2015

Social Health Protection

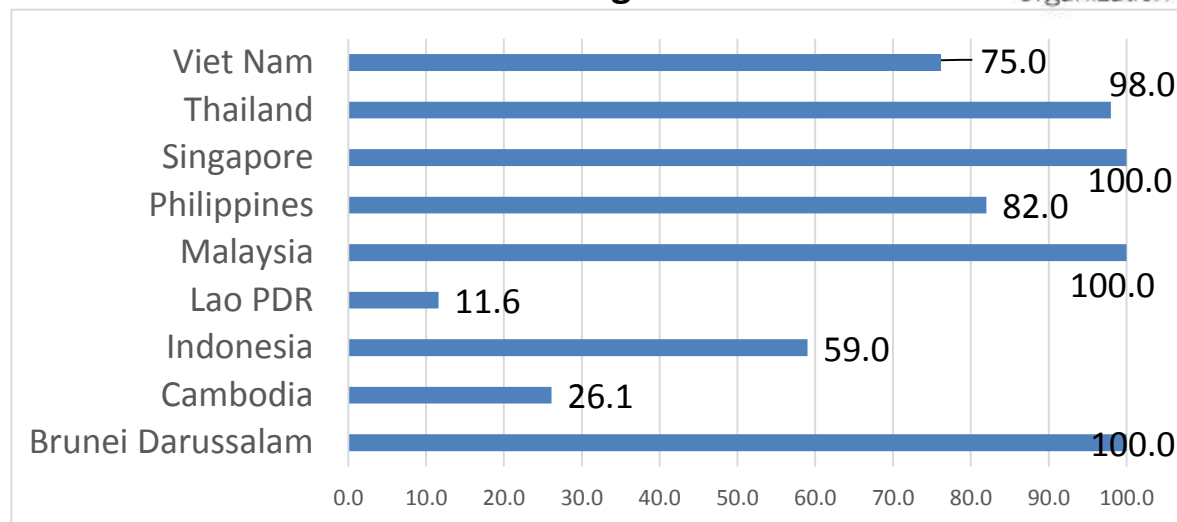


International
Labour
Organization

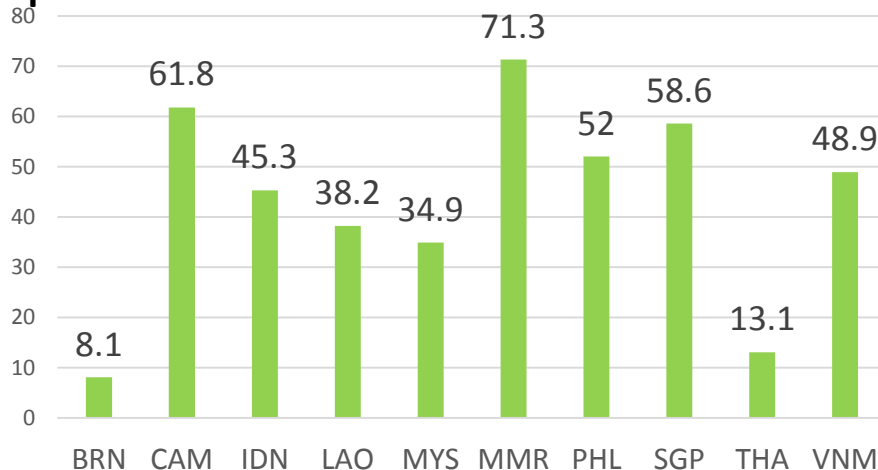
Four countries achieved
(near) universal health

Quality and access

Social health coverage



Out-of-pocket payment out of total health expenditures




Social Protection for Children

- 86% completed primary school, but child benefits lacking behind
- All countries have school feeding programs
- Means-tested social assistance, coverage and efficiency limited (exclusion errors)
- Thailand



Social Protection for the Working Age

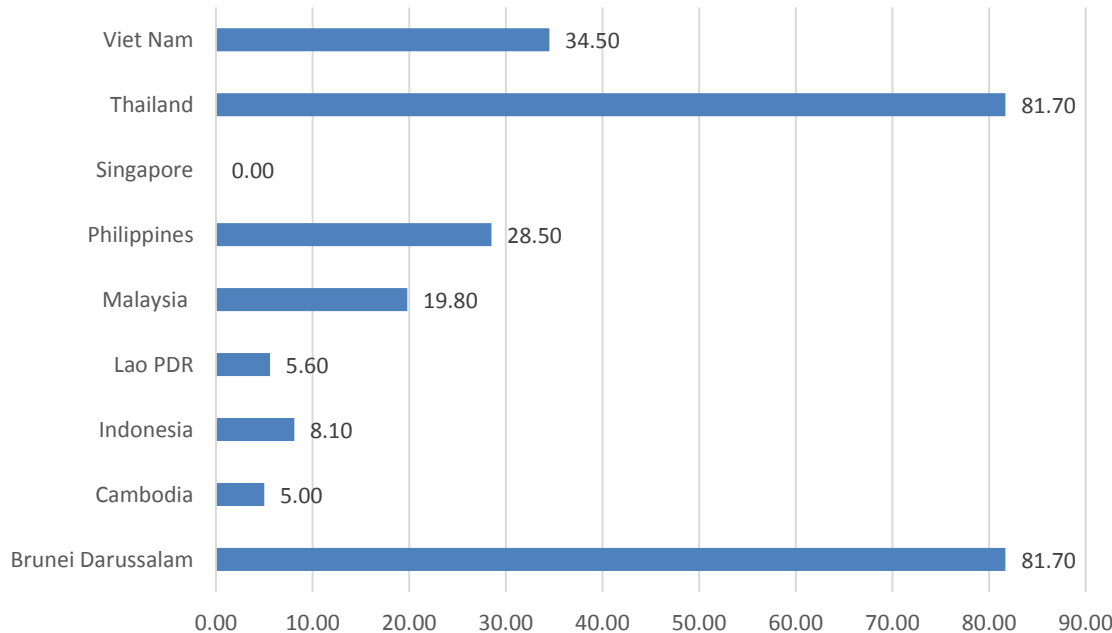
- Formal employees
- Legal coverage for work injury varies : 7% to 88%
- In many countries, employers' liabilities- not adequate protection

		Social Insurance	Employer liability
	Work Injury	8	3
	Sickness Benefit	5	7
	Maternity Benefits	6	5
	Unemployment benefit/ Severance payment	2	8

Social Protection for the Elderly

- 30% of older persons (women even lower)
- Social pension in 6 countries (Brunei D. and Thailand, universal coverage)

Effective coverage rate for old-age monthly pension



Recommendations



Extend coverage to all

Strengthen tax systems

Ensure redistribution through social protection

Increasing compliance among SMEs, self-employed and informal economy workers

Promote tripartite dialogue

Vulnerable groups (women, migrant workers, people with disabilities)



International
Labour
Organization

DECENT WORK

A better world starts here.

Thank you

Celine Peyron Bista

ILO Regional Office for Asia and the Pacific

Email: bista@ilo.org



www.ilo.org/asia



bangkok@ilo.org



[ILO.ORG](https://www.facebook.com/ILO.ORG)



[ILOTV](https://www.youtube.com/ILOTV)



[iloasiapacific](https://www.linkedin.com/company/iloasiapacific)



[@ilo](https://twitter.com/ilo)