



your leading partner in quality statistics

Statistical release P0211

Quarterly Labour Force Survey

Quarter 3, 2011

Embargoed until:

**01 November 2011
11:30**

Enquiries:

User Information Services
Tel: (012) 310 8600/4892/8390

Forthcoming issue:

Quarter 4, 2011

Expected release date

February 2012

Published by Statistics South Africa, Private Bag X44, Pretoria 0001

© Statistics South Africa, 2011

Users may apply or process this data, provided Statistics South Africa (Stats SA) is acknowledged as the original source of the data; that it is specified that the application and/or analysis is the result of the user's independent processing of the data; and that neither the basic data nor any reprocessed version or application thereof may be sold or offered for sale in any form whatsoever without prior permission from Stats SA.

Stats SA Library Cataloguing-in-Publication (CIP) Data

Quarterly Labour Force Survey Quarter 3, 2011/Statistics South Africa. Pretoria: Statistics South Africa, 2011

Quarterly

1. Labour supply – Statistics
 2. Labour supply (South Africa)
 3. Unemployment (South Africa)
 4. Informal sector (Economics) – South Africa
 5. Formal sector (Economics) – South Africa
- I. Statistics South Africa
 - II. Series
- (LCSH 16)

A complete set of Stats SA publications is available at the Stats SA Library and the following libraries:

National Library of South Africa, Pretoria Division
National Library of South Africa, Cape Town Division
Library of Parliament, Cape Town
Bloemfontein Public Library
Natal Society Library, Pietermaritzburg
Johannesburg Public Library
Eastern Cape Library Services, King William's Town
Central Regional Library, Polokwane
Central Reference Library, Nelspruit
Central Reference Collection, Kimberley
Central Reference Library, Mmabatho

This publication is available both in hard copy and on the Stats SA website www.statssa.gov.za.

The data and metadata set from the Quarterly Labour Force Survey will be available on CD-ROM. A charge may be made according to the pricing policy, which can be accessed on the website.

Stats SA also provides a subscription service.

Enquiries:

	Printing and Distribution	User Information Services
Tel:	(012) 310 8251	(012) 310 8600
Fax:	(012) 321 7381	(012) 310 8500/ 8495
Email:	distribution@statssa.gov.za	info@statssa.gov.za

Contents

	Page
List of tables in highlights of the results	iii
List of figures in highlights of the results	iii
List of tables.....	iv
1. Introduction	vi
2. Highlights of the results.....	vi
3. Employment	vii
4. The unemployed population.....	xi
5. Characteristics of the not economically active population	xiii
6. Technical notes.....	xiii
6.1. Response details	xiv
6.2. Survey requirements and design	xiv
6.3. Sample rotation.....	xiv
6.4. Weighting.....	xv
6.5. Non-response adjustment.....	xv
6.6. Final survey weights	xv
6.7. Estimation	xv
6.8. Reliability of the survey estimates.....	xv
7. Definitions	xvii

List of tables in highlights of the results

	Page
Table A: Key labour market indicators	vi
Table B: Employment by industry	viii
Table C: Employment by province	viii
Table D: Employment by occupation	x
Table E: Unemployed by sex	xi
Table F: Characteristics of the unemployed	xii
Table G: Response rates by province	xiv

List of figures in highlights of the results

Figure 1: Total employment, quarter 1:2008 to quarter 3:2011	vii
Figure 2: Quarter-to-quarter change in employment, quarter 1:2008 to quarter 3:2011	vii
Figure 3: Changes in the formal sector employment by industry	ix
Figure 4: Changes in the informal sector employment by industry	ix
Figure 5: Unemployment rate by province	xi
Figure 6: Unemployment rate by population group	xii
Figure 7: The not economically active	xiii

List of tables

	Page
Table 1: Population of working age (15–64 years)	1
Table 2: Labour force characteristics by sex – All population groups.....	2
Table 2: Labour force characteristics by sex – All population groups (concluded).....	3
Table 2.1: Labour force characteristics by population group	4
Table 2.1: Labour force characteristics by population group (concluded)	5
Table 2.2: Labour force characteristics by province	6
Table 2.2: Labour force characteristics by province (continued)	7
Table 2.2: Labour force characteristics by province (continued)	8
Table 2.2: Labour force characteristics by province (concluded)	9
Table 2.2: Labour force characteristics by province (concluded)	10
Table 2.3: Labour force characteristics by province – Expanded definition of unemployment	11
Table 2.3: Labour force characteristics by province – Expanded definition of unemployment (continued) ..	12
Table 2.3: Labour force characteristics by province – Expanded definition of unemployment (continued) ..	13
Table 2.3: Labour force characteristics by province – Expanded definition of unemployment (concluded) ..	14
Table 3.1: Employed by industry and sex – South Africa	15
Table 3.2: Employed by industry and province.....	16
Table 3.2: Employed by industry and province (continued).....	17
Table 3.2: Employed by industry and province (continued).....	18
Table 3.2: Employed by industry and province (concluded)	19
Table 3.3: Employed by sector and industry – South Africa	20
Table 3.4: Employed by province and sector.....	21
Table 3.4: Employed by province and sector (concluded).....	22
Table 3.5: Employed by sex and occupation – South Africa	23
Table 3.7: Employed by sex and status in employment – South Africa.....	24
Table 3.8: Employed by sex and usual hours of work – South Africa.....	25
Table 3.9: Time-related underemployment – South Africa	26
Table 4: Characteristics of the unemployed – South Africa.....	27
Table 4: Characteristics of the unemployed – South Africa (concluded)	28
Table 5: Characteristics of the not economically active – South Africa	29
Table 6: Socio-demographic characteristics – South Africa	30
Table 6: Socio-demographic characteristics – South Africa (continued)	31
Table 6: Socio-demographic characteristics – South Africa (concluded)	32
Table 7: Involvement in non-market activities and labour market status by province.....	33
Table 7: Involvement in non-market activities and labour market status by province (continued).....	34
Table 7: Involvement in non-market activities and labour market status by province (concluded).....	35
Appendix 2A: Sampling variability for labour force characteristics by sex.....	36
Appendix 2A: Sampling variability for labour force characteristics by sex (concluded)	37

Appendix 2.1A: Sampling variability for labour force characteristics by population group.....	38
Appendix 2.1A: Sampling variability for labour force characteristics by population group (concluded)	39
Appendix 2.2A: Sampling variability for labour force characteristics by province	40
Appendix 2.2A: Sampling variability for labour force characteristics by province (continued)	41
Appendix 2.2A: Sampling variability for labour force characteristics by province (continued)	42
Appendix 2.2A: Sampling variability for labour force characteristics by province (continued)	43
Appendix 2.2A: Sampling variability for labour force characteristics by province (concluded)	44
Appendix 3.1A: Sampling variability for the employed by industry and sex.....	45
Appendix 3.4A: Sampling variability for the employed by province and sector	46
Appendix 3.4A: Sampling variability for the employed by province and sector (concluded).....	47
Appendix 3.5A: Sampling variability for the employed by sex and occupation	48
Appendix 2B: Sampling variability for labour force characteristics by sex.....	49
Appendix 2B: Sampling variability for labour force characteristics by sex (Concluded)	50
Appendix 2.1B: Sampling variability for labour force characteristics by population group.....	51
Appendix 2.1B: Sampling variability for labour force characteristics by population group (Concluded)	52
Appendix 2.2B: Sampling variability for labour force characteristics by province	53
Appendix 2.2B: Sampling variability for labour force characteristics by province (Continued)	54
Appendix 2.2B: Sampling variability for labour force characteristics by province (Continued)	55
Appendix 2.2B: Sampling variability for labour force characteristics by province (Continued)	56
Appendix 2.2B: Sampling variability for labour force characteristics by province (Concluded)	57
Appendix 3.1B: Sampling variability for the employed by industry and sex.....	58
Appendix 3.4B: Sampling variability for the employed by province and sector	59
Appendix 3.4B: Sampling variability for the employed by province and sector (concluded).....	60
Appendix 3.5B: Sampling variability for the employed by sex and occupation	61

1. Introduction

The Quarterly Labour Force Survey (QLFS) is a household-based sample survey conducted by Statistics South Africa (Stats SA). It collects data on the labour market activities of individuals aged 15 years and above who live in South Africa. However, this report only covers labour market activities of persons aged 15 to 64 years.

This report presents the key findings of the QLFS conducted in July–September, 2011 (Q3:2011).

2. Highlights of the results

Table A: Key labour market indicators

	Jul–Sep 2010	Apr–Jun 2011	Jul–Sep 2011	Qtr-to- qtr change	Year-on- year change	Qtr-to- qtr change	Year-on- year change
	Thousand			Per cent			
Population 15–64 yrs	32 072	32 435	32 555	120	483	0,4	1,5
Labour force	17 371	17 663	17 761	98	390	0,6	2,2
Employed	12 975	13 125	13 318	193	343	1,5	2,6
Formal sector (non-agricultural)	9 043	9 198	9 436	238	393	2,6	4,3
Informal sector (non-agricultural)	2 172	2 213	2 160	-53	-12	-2,4	-0,6
Agriculture	640	598	624	26	-16	4,3	-2,5
Private households	1 119	1 117	1 098	-19	-21	-1,7	-1,9
Unemployed	4 396	4 538	4 442	-96	46	-2,1	1,0
Not economically active	14 702	14 772	14 795	23	93	0,2	0,6
Discouraged work-seekers	2 033	2 207	2 204	-3	171	-0,1	8,4
Other (not economically active)	12 669	12 566	12 591	25	-78	0,2	-0,6
Rates (%)							
Unemployment rate	25,3	25,7	25,0	-0,7	-0,3		
Employed/population ratio (absorption)	40,5	40,5	40,9	0,4	0,4		
Labour force participation rate	54,2	54,5	54,6	0,1	0,4		

Due to rounding, numbers do not necessarily add up to totals.

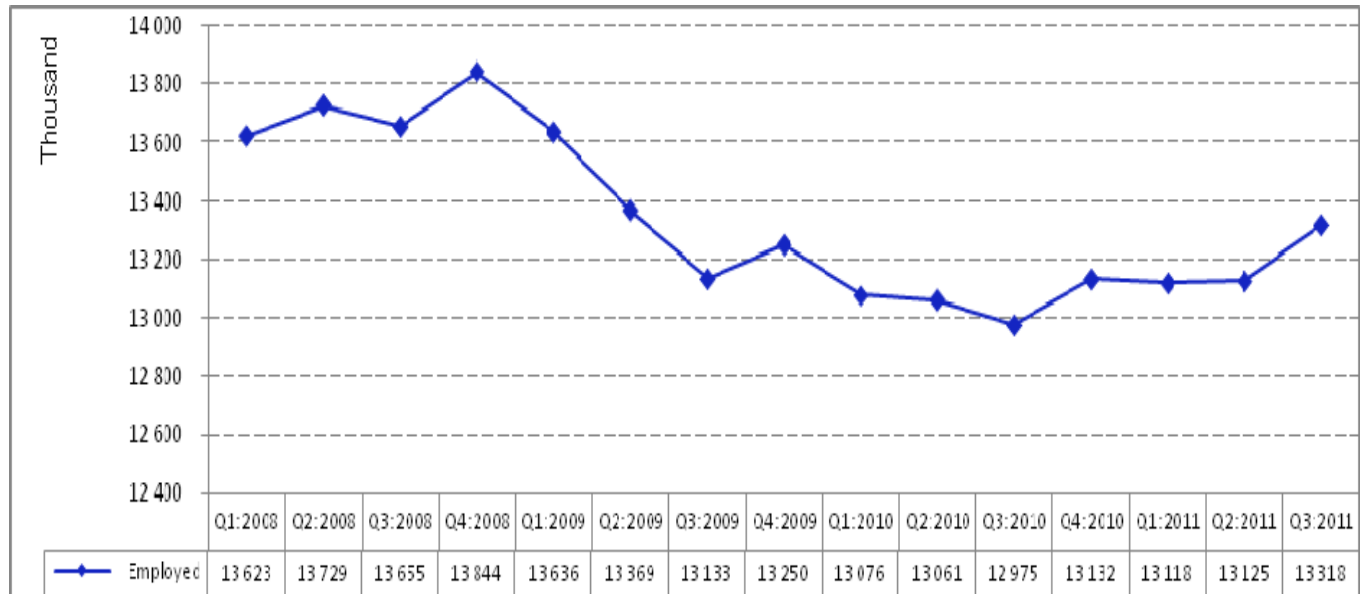
The number of persons in the labour force increased by 98 000 between Q2:2011 and Q3:2011. Table A shows that employment rose by 193 000 in Q3:2011. This increase pushed the unemployment rate down by 0,7 of a percentage point to 25,0%.

Formal sector employment increased by 238 000 jobs, while informal sector employment decreased by 53 000 jobs. Employment in Agriculture rose by 26 000 and decreased by 19 000 in Private households in Q3:2011. The number of unemployed persons decreased by 96 000 between Q2:2011 and Q3:2011, while the number of discouraged work-seekers decreased by 3 000 in the same period.

Compared to a year ago, employment increased by 343 000 (or 2,6%), unemployment increased by 46 000 (or 1,0%), the number of discouraged work-seekers increased by 171 000 (or 8,4%) and Other (not economically active) declined by 78 000, resulting in a net increase of 93 000 among the not economically active as a whole.

3. Employment

Figure 1: Total employment, Quarter 1:2008 to Quarter 3:2011



Employment remained at almost the same level for the past three quarters (from Q4:2010 to Q2:2011) at about 13,1 million, but increased by 193 000 in Q3:2011, the highest since Q2:2009.

Figure 2 (below) shows that, in the third quarters of 2008, 2009 and 2010 the labour market experienced decline in employment, but in the third quarter of 2011 there was an increase in employment, for the first time (in the third quarter) since the economic recession.

Figure 2: Quarter-to-quarter change in employment, Quarter 1:2008 to Quarter 3:2011

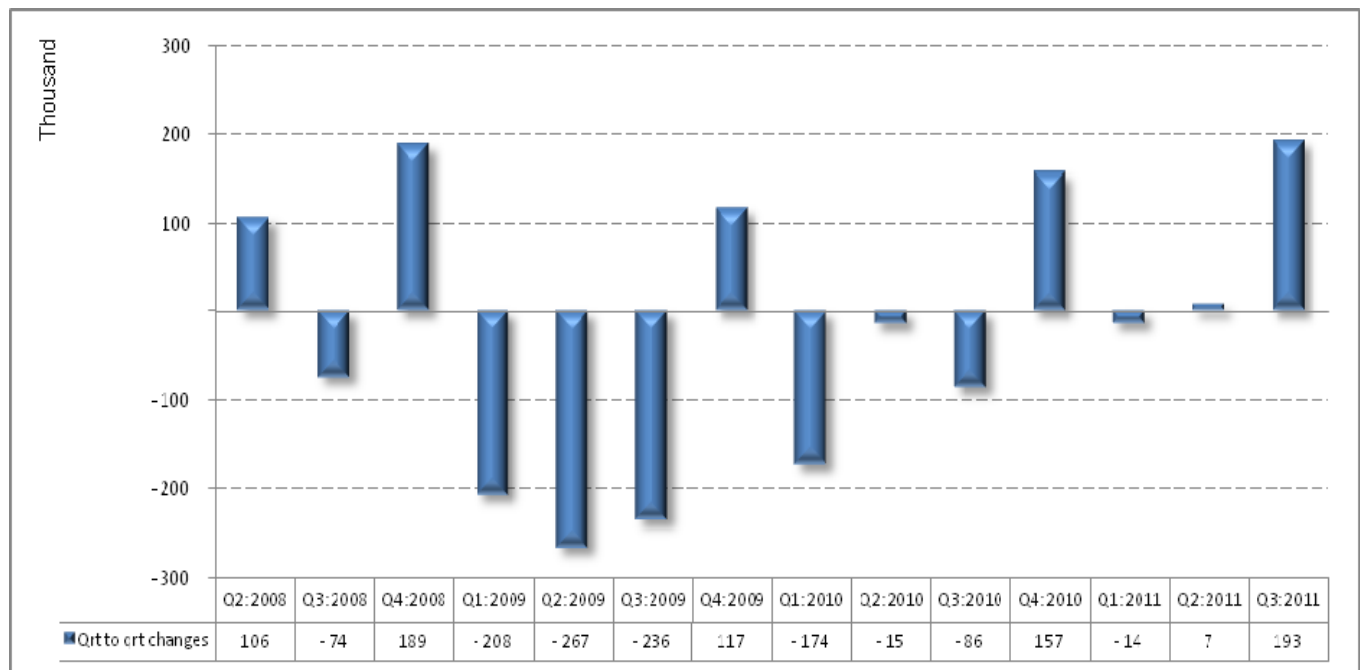


Table B: Employment by industry

Industry	Jul-Sep 2010	Apr-Jun 2011	Jul-Sep 2011	Qtr-to-qtr change	Year-on-year change	Qtr-to-qtr change	Year-on-year change
	Thousand				Per cent		
Total	12 975	13 125	13 318	193	343	1,5	2,6
Agriculture	640	598	624	26	-16	4,3	-2,5
Mining [#]	303	282	324	42	21	14,9	6,9
Manufacturing	1 713	1 735	1 737	2	24	0,1	1,4
Utilities	99	93	73	-20	-26	-21,5	-26,3
Construction	1 076	1 043	1 086	43	10	4,1	0,9
Trade	2 947	2 944	3 012	68	65	2,3	2,2
Transport	773	777	756	-21	-17	-2,7	-2,2
Finance and other business services	1 625	1 704	1 768	64	143	3,8	8,8
Community and social services	2 678	2 831	2 836	5	158	0,2	5,9
Private households	1 119	1 117	1 098	-19	-21	-1,7	-1,9

[#] QLFS mining figures are not robust and therefore the QES figures should be used.

*Due to rounding, numbers do not necessarily add up to totals.

Table B indicates that between Q2:2011 and Q3:2011, most industries gained employment, except Transport, Utilities and Private households which lost 21 000; 20 000 and 19 000 jobs respectively.

The year-on-year comparisons show an overall increase of 343 000 jobs, with Community and social services accounting for the biggest jobs gain (158 000), followed by Finance and other business services (143 000) and Trade (65 000). Most job losses were experienced in Utilities (26 000) and Private households (21 000). Transport and Agriculture also lost jobs (17 000 and 16 000 respectively).

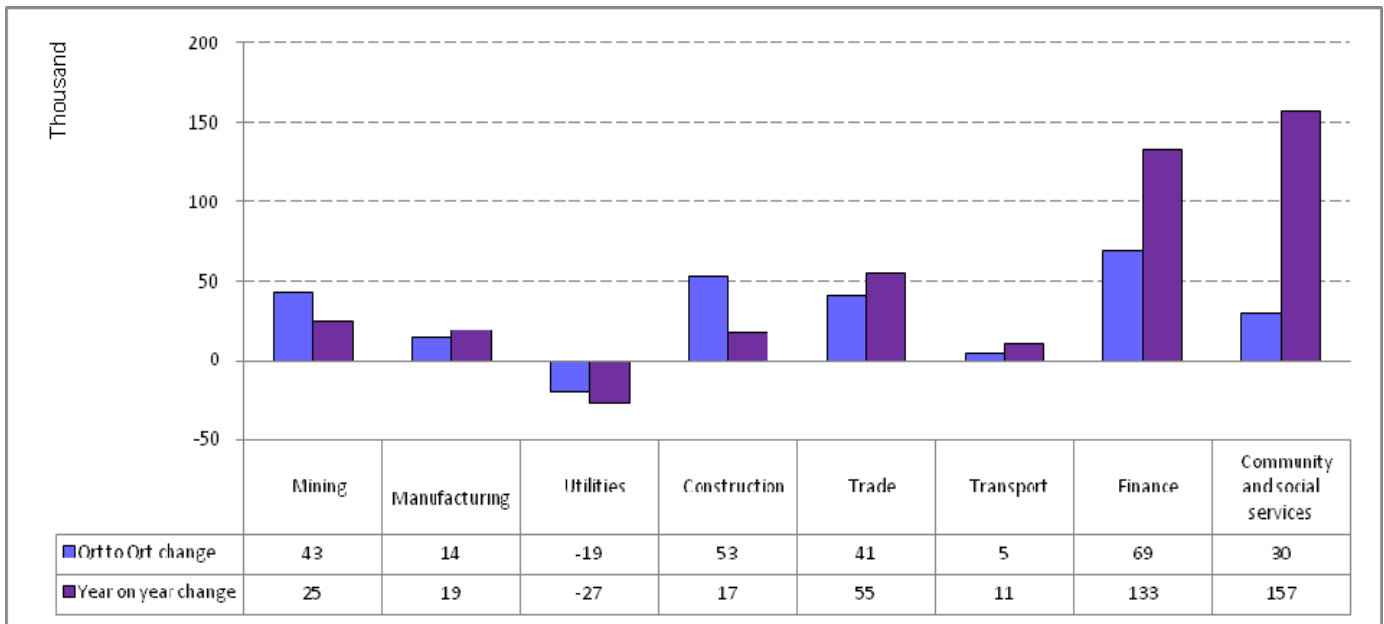
Table C: Employment by province

Province	Jul-Sep 2010	Apr-Jun 2011	Jul-Sep 2011	Qtr-to-qtr change	Year-on-year change	Qtr-to-qtr change	Year-on-year change
	Thousand				Per cent		
South Africa	12 975	13 125	13 318	193	343	1,5	2,6
Western Cape	1 754	1 805	1 806	1	52	0,1	3,0
Eastern Cape	1 306	1 309	1 298	-11	-8	-0,8	-0,6
Northern Cape	276	264	278	14	2	5,3	0,7
Free State	768	772	826	54	58	7,0	7,6
KwaZulu-Natal	2 401	2 500	2 510	10	109	0,4	4,5
North West	714	691	680	-11	-34	-1,6	-4,8
Gauteng	3 958	3 965	3 983	18	25	0,5	0,6
Mpumalanga	890	884	911	27	21	3,1	2,4
Limpopo	905	936	1 026	90	121	9,6	13,4

*Due to rounding, numbers do not necessarily add up to totals.

Table C shows that there were noticeable employment increases in Limpopo (90 000), Free State (54 000) and Mpumalanga (27 000) in Q3:2011. Job losses were experienced in two of the nine provinces (i.e. North West (11 000) and Eastern Cape (11 000)). Compared with 12 months earlier, employment increased in all provinces except in North West and Eastern Cape where there were job losses of 34 000 and 8 000, respectively.

Figure 3: Changes in the formal sector employment by industry

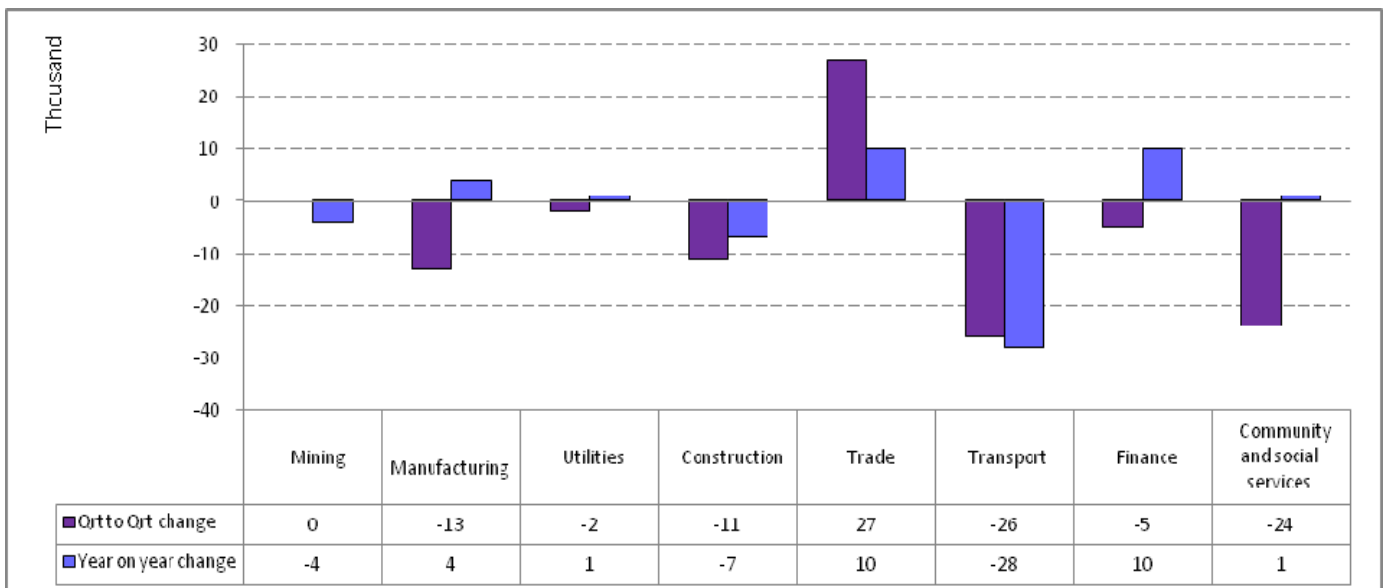


#QLFS mining figures are not robust and therefore the QES figures should be used.

Figure 3 shows that between Q2:2011 and Q3:2011 most of the formal sector job gains were in Finance (69 000), Construction (53 000), Mining (43 000), Trade (41 000) and Community and social services (30 000). Job losses were observed only in the Utilities industry in the same period.

The year-on-year comparisons show a similar pattern to the quarter-to-quarter changes; employment increased in all industries, except Utilities. Most job gains were recorded in the Community and social services (157 000), Finance (133 000) and Trade (55 000) industries.

Figure 4: Changes in the informal sector employment by industry



#QLFS mining figures are not robust and therefore the QES figures should be used.

Figure 4 indicates that all industries lost informal sector jobs between Q2:2011 and Q3:2011, except Trade which gained 27 000 jobs and Mining which remained unchanged.

Compared to Q3:2010, the informal sector experienced a net loss of 12 000 jobs in Q3:2011 with most of the losses being in Transport (28 000).

Table D: Employment by occupation

Occupation	Jul–Sep 2010	Apr–Jun 2011	Jul–Sep 2011	Qtr-to- qtr change	Year-on- year change	Qtr-to- qtr change	Year-on- year change
	Thousand				Per cent		
Total	12 975	13 125	13 318	193	343	1,5	2,6
Manager	1 069	1 124	1 130	6	61	0,5	5,7
Professional	705	762	763	1	58	0,1	8,2
Technician	1 418	1 469	1 440	-29	22	-2,0	1,6
Clerk	1 411	1 358	1 426	68	15	5,0	1,1
Sales and services	1 858	1 944	1 975	31	117	1,6	6,3
Skilled agriculture	76	71	61	-10	-15	-14,1	-19,7
Craft and related trade	1 607	1 576	1 655	79	48	5,0	3,0
Plant and machine operator	1 162	1 121	1 097	-24	-65	-2,1	-5,6
Elementary	2 782	2 824	2 894	70	112	2,5	4,0
Domestic worker	887	876	878	2	-9	0,2	-1,0

*Due to rounding, numbers do not necessarily add up to totals.

Between Q2:2011 and Q3:2011, the biggest increase in employment was observed in the Craft and related trade occupations where it increased by 79 000 jobs, followed by Elementary (70 000) and Clerical occupations (68 000). The biggest job losses were observed among Technicians (29 000) and Plant and machine operator (24 000) occupations.

The year-on-year comparisons show an overall jobs gain of 343 000. Most of the jobs created were in Sales and services (117 000) and Managerial (61 000) occupations. Job losses were observed in the Plant and machine operator occupations (65 000), Skilled agriculture (15 000) and Domestic worker (9 000) occupations.

4. The unemployed population

Table E: The unemployed by sex

Unemployed	Jul-Sep 2010	Apr-Jun 2011	Jul-Sep 2011	Qtr-to-qtr change	Year-on-year change	Qtr-to-qtr change	Year-on-year change
	Thousand				Per cent		
Total	4 396	4 538	4 442	-96	46	-2,1	1,0
Women	2 183	2 301	2 257	-44	74	-1,9	3,4
Men	2 214	2 237	2 186	-51	-28	-2,3	-1,3

*Due to rounding, numbers do not necessarily add up to totals.

The number of unemployed men and women between Q2:2011 and Q3:2011 decreased by 51 000 and 44 000 respectively. This resulted in an overall decrease of 96 000 in the number of unemployed persons in Q3:2011 compared to Q2:2011.

The year-on-year comparisons show that the number of unemployed persons increased by 46 000. The number of unemployed women increased by 74 000, while unemployment among men decreased by 28 000 between Q3:2010 and Q3:2011.

Figure 5: Unemployment rate by province

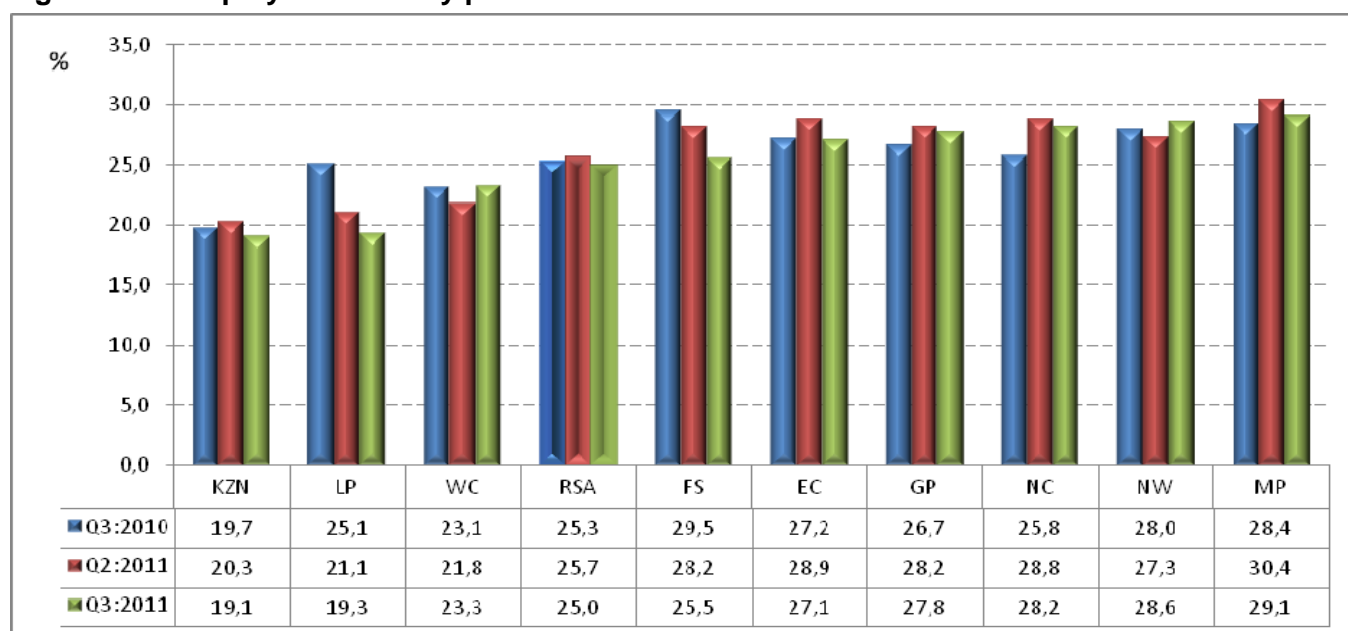


Figure 5 shows a decrease in the unemployment rate in seven of the nine provinces in Q3:2011 compared to Q2:2011. The biggest decrease in the unemployment rate was observed in Free State (2,7 percentage points), Eastern Cape (1,8 percentage points) and Limpopo (1,8 percentage points). Western Cape and North West recorded increases in the unemployment rate in the same period.

The comparisons between Q3: 2010 and Q3: 2011 indicate that there was a slight decrease of 0,3 of a percentage point in the unemployment rate. The provinces that contributed most to the decrease were Limpopo (5,8 percentage points) and Free State (4,0 percentage points).

Figure 6: Unemployment rate by population group

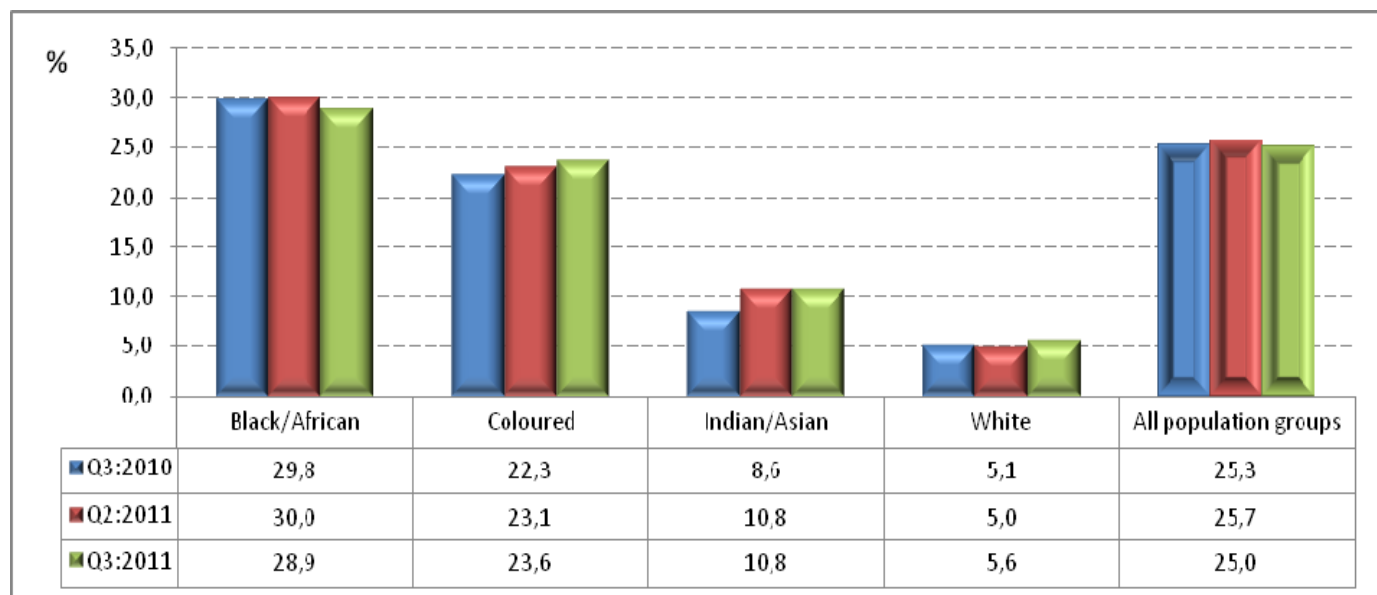


Figure 6 shows that between Q2:2011 and Q3:2011, the unemployment rate decreased among the black African population (1,1 percentage points), while it increased among the white population (0,6 of a percentage point), coloured population (0,5 of a percentage point), and remained unchanged among the Indian/Asian population.

The year-on-year comparisons show a similar pattern; the unemployment rate decreased among the black African population and increased among all other population groups.

Table F: Characteristics of the unemployed

Unemployed	Jul-Sep 2010	Apr-Jun 2011	Jul-Sep 2011	Qtr-to-qtr change	Year-on-year change	Qtr-to-qtr change	Year-on-year change
	Thousand				Per cent		
Total	4 396	4 538	4 442	- 96	46	-2,1	1,0
Job losers	1 376	1 359	1 339	- 20	- 37	-1,5	-2,7
Job leavers	260	255	264	9	4	3,5	1,5
New entrants	1 944	2 036	1 973	- 63	29	-3,1	1,5
Re-entrants	184	188	218	30	34	16,0	18,5
Other	632	700	648	- 52	16	-7,4	2,5

Table F shows that between Q2:2011 and Q3:2011 there was a decrease in the number of new entrants into the labour market (63 000), and in job losers (20 000), but an increase in the number of re-entrants (30 000) and job leavers (9 000). Among those who were unemployed, approximately 2,0 million were new entrants into the labour market which constitutes 44,4% of the unemployed.

Compared to Q3:2010, the number of re-entrants increased by 34 000 and new entrants increased by 29 000, while the number of job losers decreased by 37 000 in Q3:2011.

5. Characteristics of the not economically active population

Figure 7: The not economically active population

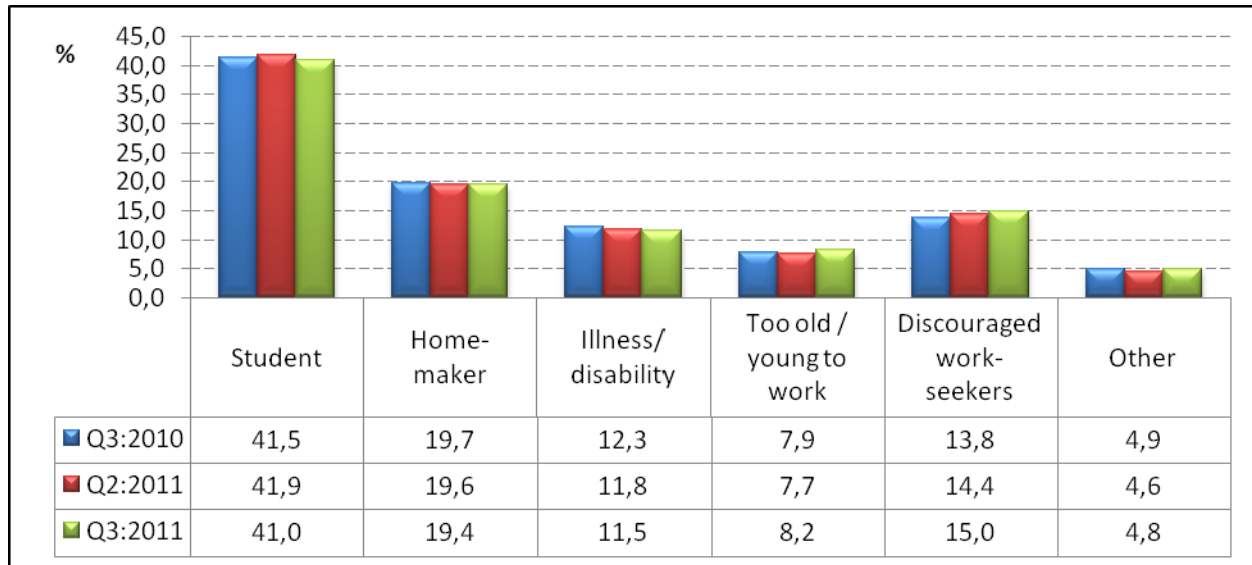


Figure 7 shows that in Q3:2011, students accounted for the biggest share (41,0%) of the not economically active population. This is 0,9 of a percentage point lower than in Q2:2011. In the same period, discouraged work-seekers accounted for 15,0% of the not economically active population (0,6 of a percentage point higher than in the previous quarter).

Compared to Q3:2010, the share of students among the not economically active declined by 0,5 of a percentage point; while the discouraged work-seekers increased by 1,2 percentage points.

PJ Lehohla
Statistician-General: Statistics South Africa

6. Technical notes

6.1. Response details

Table G: Response rates by province

Province	Jul-Sep 2011
	Per cent
Western Cape	86,8
Eastern Cape	98,8
Northern Cape	91,8
Free State	96,6
KwaZulu-Natal	96,8
North West	96,5
Gauteng	84,8
Mpumalanga	95,9
Limpopo	99,1
South Africa	93,5

6.2. Survey requirements and design

The Quarterly Labour Force Survey (QLFS) frame has been developed as a general-purpose household survey frame that can be used by all other household surveys, irrespective of the sample size requirement of the survey. The sample size for the QLFS is roughly 30 000 dwellings per quarter.

The sample is based on information collected during the 2001 Population Census conducted by Stats SA. In preparation for the 2001 Census, the country was divided into 80 787 enumeration areas (EAs). Stats SA's household-based surveys use a master sample of primary sampling units (PSUs) which comprises EAs that are drawn from across the country.

The sample is designed to be representative at provincial level, as well as within provinces at metro/non-metro level. Within the metros, the sample is further distributed by geography type. The four geography types are: urban formal, urban informal, farms and tribal. This implies, for example, that within a metropolitan area, the sample is representative of the different geography types that may exist within that metro.

The current sample size is 3 080 PSUs. It is divided equally into four subgroups or panels called rotation groups. The rotation groups are designed in such a way that each of these groups has the same distribution pattern as that which is observed in the whole sample. They are numbered from one to four and these numbers also correspond to the quarters of the year in which the sample will be rotated for the particular group.

The sample for the redesigned Labour Force Survey (i.e. the QLFS) is based on a stratified two-stage design; probability proportional to size (PPS) sampling of PSUs in the first stage, and sampling of dwelling units (DUs) with systematic sampling in the second stage.

6.3. Sample rotation

Each quarter, a ¼ of the sampled dwellings rotate out of the sample and are replaced by new dwellings from the same PSU or the next PSU on the list. Thus, sampled dwellings will remain in the sample for four consecutive quarters. It should be noted that the sampling unit is the dwelling, and the unit of observation is the household. Therefore, if a household moves out of a dwelling after being in the sample for, say two quarters, and a new household moves in, the new household will be enumerated for the next two quarters. If no household moves into the sampled dwelling, the dwelling will be classified as vacant (unoccupied).

6.4. Weighting

The sampling weights for the data collected from the sampled households are constructed in such a manner that the responses could be properly expanded to represent the entire civilian population of South Africa. The weights are the result of calculations involving several factors, including original selection probabilities, adjustment for non-response, and benchmarking to known population estimates from the Demographic division of Stats SA.

6.5. Non-response adjustment

In general, imputation is used for item non-response (i.e. blanks within the questionnaire) and edits failure (i.e. invalid or inconsistent responses). The eligible households in the sampled dwellings can be divided into two response categories: respondents and non-respondents. Weight adjustment is applied to account for the non-respondent households (e.g. refusal, no contact, etc.).

6.6. Final survey weights

The final survey weights are constructed using regression estimation to calibrate to the known population counts at the national level population estimates (which are supplied by the Demography division) cross-classified by 5-year age groups, gender and race, and provincial population estimates by broad age groups. The 5-year age groups are: 0–4, 5–9, 10–14, etc., and 65 years and over. The provincial-level age groups are: 0–14, 15–34, 35–64, and 65 years and over. The calibrated weights are constructed in such a way that all persons in a household would have the same final weight.

6.7. Estimation

The final survey weights are used to obtain the estimates for various domains of interest, e.g. number of persons employed in agriculture in Western Cape, number of females employed in manufacturing, etc.

6.8. Reliability of the survey estimates

Because estimates are based on sample data, they differ from figures that would have been obtained from complete enumeration of the population using the same instrument. Results are subject to both sampling and non-sampling errors. Non-sampling errors include biases from inaccurate reporting, processing, and tabulation, etc., as well as errors from non-response and incomplete reporting. These types of errors cannot be measured readily. However, to the extent possible, non-sampling errors can be minimised through the procedures used for data collection, editing, quality control, and non-response adjustment. The variances of the survey estimates are used to measure sampling errors. The variance estimation methodology is discussed below.

(i) Variance estimation

The most commonly used methods for estimating variances of survey estimates from complex surveys such as the QLFS, are the Taylor-series Linearization, Jackknife Replication, Balanced Repeated Replication (BRR), and Bootstrap methods (Wolter, 2007)¹. The Fay's BRR method has been used for variance estimation in the QLFS because of its simplicity.

(ii) Coefficient of variation

It is more useful in many situations to assess the size of the standard error relative to the magnitude of the characteristic being measured (the standard error is defined as the square root of the variance). The **coefficient of variation** (cv) provides such a measure. It is the **ratio of the standard error of the survey estimate to the value of the estimate itself expressed as a percentage**. It is very useful in comparing the precision of several different survey estimates, where their sizes or scale differ from one another.

¹ Wolter KM, 2007. *Introduction to Variance Estimation, 2nd Edition*. New York: Springer-Verlag.

(iii) P-value of an estimate of change

The p-value corresponding to an estimate of change is the probability of observing a value larger than the particular observed value under the hypothesis that there is no real change. If p-value $< 0,01$, the difference is highly significant; if p-value is between $0,01$ and $0,05$, the difference is significant; and if p-value $> 0,05$, the difference is not significant.

7. Definitions

Discouraged work-seeker is a person who was not employed during the reference period, wanted to work, was available to work/start a business, but did not take active steps to find work during the last four weeks, provided that the main reason given for not seeking work was any of the following: no jobs available in the area; unable to find work requiring his/her skills; lost hope of finding any kind of work.

Economic activities are those that contribute to the production of goods and services in the country. There are two types of economic activities: (1) market production activities (work done for others and usually associated with pay or profit); and (2) non-market production activities (work done for the benefit of the household, e.g. subsistence farming).

Employed persons are those aged 15–64 years who, during the reference week: did any work for at least one hour; or had a job or business, but were not at work (temporarily absent).

Employment-to-population ratio (labour absorption rate) is the proportion of the working-age population that is employed.

Informal employment identifies persons who are in precarious employment situations, irrespective of whether or not the entity for which they work is in the formal or informal sector. Persons in informal employment therefore consist of all persons in the informal sector; employees in the formal sector; and persons working in private households who are not entitled to basic benefits such as pension or medical aid contributions from their employer, and who do not have a written contract of employment.

Informal sector: The informal sector has the following two components:

- Employees working in establishments that employ less than five employees, who do not deduct income tax from their salaries/wages; and
- Employers, own-account workers and persons helping unpaid in their household business who are not registered for either income tax or value-added tax.

The **labour force** comprises all persons who are employed plus all persons who are unemployed.

Labour force participation rate is the proportion of the working-age population that is either employed or unemployed.

Long-term unemployment: Persons in long-term unemployment are those individuals among the unemployed who were without work and trying to find a job or start a business for one year or more.

Not economically active: Persons aged 15–64 years who are neither employed, nor unemployed in the reference week.

Persons in **underemployment (time-related)** are employed persons who were willing and available to work additional hours, whose total number of hours actually worked during the reference period was below 35 hours per week.

Underutilised labour comprises three groups: persons who are underemployed, persons who are unemployed, and persons who are discouraged.

Unemployed persons are those (aged 15–64 years) who:

- Were not employed in the reference week **and**;
- Actively looked for work or tried to start a business in the four weeks preceding the survey interview **and**;
- Were available for work, i.e. would have been able to start work or a business in the reference week **or**;
- Had not actively looked for work in the past four weeks, but had a job or business to start at a definite date in the future and were available.

Unemployment rate is the proportion of the labour force that is unemployed.

The **working-age population** comprises all persons aged 15–64 years.

Appendix 1

Table 1: Population of working age (15–64 years)									
	Jul-Sep 2010	Oct-Dec 2010	Jan-Mar 2011	Apr-Jun 2011	Jul-Sep 2011	Qrt-to-qrt change	Year-on-year change	Qrt-to-qrt change	Year-on-year change
	Thousand	Thousand	Thousand	Thousand	Thousand	Thousand	Thousand	Per cent	Per cent
Both sexes	32 072	32 193	32 314	32 435	32 555	120	483	0,4	1,5
Women	16 537	16 589	16 642	16 695	16 747	52	210	0,3	1,3
Men	15 536	15 604	15 672	15 740	15 808	68	272	0,4	1,8
Population groups	32 072	32 193	32 314	32 435	32 555	120	483	0,4	1,5
Black/African	25 033	25 149	25 265	25 381	25 496	115	463	0,5	1,8
Coloured	3 003	3 012	3 021	3 030	3 038	8	35	0,3	1,2
Indian/Asian	914	918	922	926	930	4	16	0,4	1,8
White	3 122	3 114	3 106	3 098	3 090	-8	-32	-0,3	-1,0
South Africa	32 072	32 193	32 314	32 435	32 555	120	483	0,4	1,5
Western Cape	3 390	3 403	3 417	3 430	3 444	14	54	0,4	1,6
Eastern Cape	4 131	4 143	4 155	4 167	4 179	12	48	0,3	1,2
Northern Cape	713	715	717	719	721	2	8	0,3	1,1
Free State	1 860	1 863	1 867	1 870	1 874	4	14	0,2	0,8
KwaZulu-Natal	6 664	6 692	6 720	6 748	6 776	28	112	0,4	1,7
North West	2 019	2 025	2 031	2 037	2 043	6	24	0,3	1,2
Gauteng	7 702	7 732	7 763	7 793	7 821	28	119	0,4	1,5
Mpumalanga	2 297	2 307	2 316	2 326	2 336	10	39	0,4	1,7
Limpopo	3 296	3 313	3 329	3 345	3 362	17	66	0,5	2,0

Due to rounding, numbers do not necessarily add up to totals.

Table 2: Labour force characteristics by sex – All population groups									
	Jul-Sep 2010	Oct-Dec 2010	Jan-Mar 2011	Apr-Jun 2011	Jul-Sep 2011	Qrt-to-qrt change	Year-on-year change	Qrt-to-qrt change	Year-on-year change
	Thousand	Thousand	Thousand	Thousand	Thousand	Thousand	Thousand	Per cent	Per cent
Both sexes									
Population 15–64 yrs	32 072	32 193	32 314	32 435	32 555	120	483	0,4	1,5
Labour Force	17 371	17 269	17 482	17 663	17 761	98	390	0,6	2,2
Employed	12 975	13 132	13 118	13 125	13 318	193	343	1,5	2,6
Formal sector (Non-agricultural)	9 043	9 163	9 219	9 198	9 436	238	393	2,6	4,3
Informal sector (Non-agricultural)	2 172	2 225	2 179	2 213	2 160	-53	-12	-2,4	-0,6
Agriculture	640	627	603	598	624	26	-16	4,3	-2,5
Private households	1 119	1 117	1 118	1 117	1 098	-19	-21	-1,7	-1,9
Unemployed	4 396	4 137	4 364	4 538	4 442	-96	46	-2,1	1,0
Not economically active	14 702	14 924	14 832	14 772	14 795	23	93	0,2	0,6
Discouraged work-seekers	2 033	2 150	2 223	2 207	2 204	-3	171	-0,1	8,4
Other(not economically active)	12 669	12 774	12 609	12 566	12 591	25	-78	0,2	-0,6
Rates (%)									
Unemployment rate	25,3	24,0	25,0	25,7	25,0	-0,7	-0,3		
Employed/population ratio (absorption)	40,5	40,8	40,6	40,5	40,9	0,4	0,4		
Labour force participation rate	54,2	53,6	54,1	54,5	54,6	0,1	0,4		
Women									
Population 15–64 yrs	16 537	16 589	16 642	16 695	16 747	52	210	0,3	1,3
Labour Force	7 784	7 762	7 926	8 018	8 064	46	280	0,6	3,6
Employed	5 601	5 698	5 688	5 717	5 807	90	206	1,6	3,7
Formal sector (Non-agricultural)	3 619	3 711	3 703	3 752	3 852	100	233	2,7	6,4
Informal sector (Non-agricultural)	902	922	915	912	891	-21	-11	-2,3	-1,2
Agriculture	202	209	208	191	205	14	3	7,3	1,5
Private households	879	856	863	863	860	-3	-19	-0,3	-2,2
Unemployed	2 183	2 064	2 237	2 301	2 257	-44	74	-1,9	3,4
Not economically active	8 752	8 827	8 716	8 677	8 683	6	-69	0,1	-0,8
Discouraged work-seekers	1 156	1 197	1 235	1 212	1 240	28	84	2,3	7,3
Other(not economically active)	7 597	7 630	7 481	7 465	7 443	-22	-154	-0,3	-2,0
Rates (%)									
Unemployment rate	28,0	26,6	28,2	28,7	28,0	-0,7	0,0		
Employed/population ratio (absorption)	33,9	34,3	34,2	34,2	34,7	0,5	0,8		
Labour force participation rate	47,1	46,8	47,6	48,0	48,2	0,2	1,1		

Due to rounding, numbers do not necessarily add up to totals.

Note: Employment refers to market production activities.

Table 2: Labour force characteristics by sex – All population groups (concluded)									
	Jul-Sep 2010	Oct-Dec 2010	Jan-Mar 2011	Apr-Jun 2011	Jul-Sep 2011	Qrt-to-qrt change	Year-on-year change	Qrt-to-qrt change	Year-on-year change
	Thousand	Thousand	Thousand	Thousand	Thousand	Thousand	Thousand	Per cent	Per cent
Men									
Population 15–64 yrs	15 536	15 604	15 672	15 740	15 808	68	272	0,4	1,8
Labour Force	9 587	9 507	9 556	9 645	9 697	52	110	0,5	1,1
Employed	7 373	7 434	7 430	7 408	7 511	103	138	1,4	1,9
Formal sector (Non-agricultural)	5 424	5 452	5 516	5 446	5 584	138	160	2,5	2,9
Informal sector (Non-agricultural)	1 270	1 303	1 264	1 301	1 269	-32	-1	-2,5	-0,1
Agriculture	438	418	395	407	419	12	-19	2,9	-4,3
Private households	241	261	255	254	239	-15	-2	-5,9	-0,8
Unemployed	2 214	2 073	2 126	2 237	2 186	-51	-28	-2,3	-1,3
Not economically active	5 949	6 097	6 115	6 095	6 111	16	162	0,3	2,7
Discouraged work-seekers	877	953	988	995	963	-32	86	-3,2	9,8
Other(not economically active)	5 072	5 144	5 128	5 101	5 148	47	76	0,9	1,5
Rates (%)									
Unemployment rate	23,1	21,8	22,2	23,2	22,5	-0,7	-0,6		
Employed/population ratio (absorption)	47,5	47,6	47,4	47,1	47,5	0,4	0,0		
Labour force participation rate	61,7	60,9	61,0	61,3	61,3	0,0	-0,4		

Due to rounding, numbers do not necessarily add up to totals.

Note: Employment refers to market production activities.

Table 2.1: Labour force characteristics by population group									
	Jul-Sep 2010	Oct-Dec 2010	Jan-Mar 2011	Apr-Jun 2011	Jul-Sep 2011	Qrt-to-qrt change	Year-on-year change	Qrt-to-qrt change	Year-on-year change
	Thousand	Thousand	Thousand	Thousand	Thousand	Thousand	Thousand	Per cent	Per cent
South Africa									
Population 15–64 yrs	32 072	32 193	32 314	32 435	32 555	120	483	0,4	1,5
Labour Force	17 371	17 269	17 482	17 663	17 761	98	390	0,6	2,2
Employed	12 975	13 132	13 118	13 125	13 318	193	343	1,5	2,6
Unemployed	4 396	4 137	4 364	4 538	4 442	-96	46	-2,1	1,0
Not economically active	14 702	14 924	14 832	14 772	14 795	23	93	0,2	0,6
Rates (%)									
Unemployment rate	25,3	24,0	25,0	25,7	25,0	-0,7	-0,3		
Employed/population ratio (absorption)	40,5	40,8	40,6	40,5	40,9	0,4	0,4		
Labour force participation rate	54,2	53,6	54,1	54,5	54,6	0,1	0,4		
Black/African									
Population 15–64 yrs	25 033	25 149	25 265	25 381	25 496	115	463	0,5	1,8
Labour Force	12 788	12 724	12 898	13 169	13 165	-4	377	0,0	2,9
Employed	8 975	9 149	9 158	9 215	9 361	146	386	1,6	4,3
Unemployed	3 813	3 575	3 740	3 953	3 804	-149	-9	-3,8	-0,2
Not economically active	12 245	12 425	12 367	12 213	12 331	118	86	1,0	0,7
Rates (%)									
Unemployment rate	29,8	28,1	29,0	30,0	28,9	-1,1	-0,9		
Employed/population ratio (absorption)	35,9	36,4	36,2	36,3	36,7	0,4	0,8		
Labour force participation rate	51,1	50,6	51,1	51,9	51,6	-0,3	0,5		
Coloured									
Population 15–64 yrs	3 003	3 012	3 021	3 030	3 038	8	35	0,3	1,2
Labour Force	1 917	1 885	1 931	1 822	1 957	135	40	7,4	2,1
Employed	1 490	1 484	1 495	1 402	1 495	93	5	6,6	0,3
Unemployed	427	401	436	420	463	43	36	10,2	8,4
Not economically active	1 086	1 126	1 090	1 208	1 081	-127	-5	-10,5	-0,5
Rates (%)									
Unemployment rate	22,3	21,3	22,6	23,1	23,6	0,5	1,3		
Employed/population ratio (absorption)	49,6	49,3	49,5	46,3	49,2	2,9	-0,4		
Labour force participation rate	63,8	62,6	63,9	60,1	64,5	4,4	0,7		

Due to rounding, numbers do not necessarily add up to totals.
 Note: Employment refers to market production activities.

Table 2.1: Labour force characteristics by population group (concluded)									
	Jul-Sep 2010	Oct-Dec 2010	Jan-Mar 2011	Apr-Jun 2011	Jul-Sep 2011	Qrt-to-qrt change	Year-on-year change	Qrt-to-qrt change	Year-on-year change
	Thousand	Thousand	Thousand	Thousand	Thousand	Thousand	Thousand	Per cent	Per cent
Indian/Asian									
Population 15–64 yrs	914	918	922	926	930	4	16	0,4	1,8
Labour Force	568	559	548	557	528	-29	-40	-5,2	-7,0
Employed	518	514	484	497	471	-26	-47	-5,2	-9,1
Unemployed	49	44	64	60	57	-3	8	-5,0	16,3
Not economically active	347	360	374	369	402	33	55	8,9	15,9
Rates (%)									
Unemployment rate	8,6	7,9	11,7	10,8	10,8	0,0	2,2		
Employed/population ratio (absorption)	56,7	56,0	52,5	53,7	50,6	-3,1	-6,1		
Labour force participation rate	62,0	60,8	59,4	60,2	56,8	-3,4	-5,2		
White									
Population 15–64 yrs	3 122	3 114	3 106	3 098	3 090	-8	-32	-0,3	-1,0
Labour Force	2 098	2 101	2 105	2 115	2 110	-5	12	-0,2	0,6
Employed	1 991	1 985	1 981	2 011	1 992	-19	1	-0,9	0,1
Unemployed	107	116	124	105	118	13	11	12,4	10,3
Not economically active	1 024	1 013	1 001	983	980	-3	-44	-0,3	-4,3
Rates (%)									
Unemployment rate	5,1	5,5	5,9	5,0	5,6	0,6	0,5		
Employed/population ratio (absorption)	63,8	63,7	63,8	64,9	64,5	-0,4	0,7		
Labour force participation rate	67,2	67,5	67,8	68,3	68,3	0,0	1,1		

Due to rounding, numbers do not necessarily add up to totals.

Note: Employment refers to market production activities.

Table 2.2: Labour force characteristics by province									
	Jul-Sep 2010	Oct-Dec 2010	Jan-Mar 2011	Apr-Jun 2011	Jul-Sep 2011	Qrt-to-qrt change	Year-on-year change	Qrt-to-qrt change	Year-on-year change
	Thousand	Thousand	Thousand	Thousand	Thousand	Thousand	Thousand	Per cent	Per cent
South Africa									
Population 15–64 yrs	32 072	32 193	32 314	32 435	32 555	120	483	0,4	1,5
Labour Force	17 371	17 269	17 482	17 663	17 761	98	390	0,6	2,2
Employed	12 975	13 132	13 118	13 125	13 318	193	343	1,5	2,6
Unemployed	4 396	4 137	4 364	4 538	4 442	-96	46	-2,1	1,0
Not economically active	14 702	14 924	14 832	14 772	14 795	23	93	0,2	0,6
Discouraged work-seekers	2 033	2 150	2 223	2 207	2 204	-3	171	-0,1	8,4
Other	12 669	12 774	12 609	12 566	12 591	25	-78	0,2	-0,6
Rates (%)									
Unemployment rate	25,3	24,0	25,0	25,7	25,0	-0,7	-0,3		
Employed/population ratio (absorption)	40,5	40,8	40,6	40,5	40,9	0,4	0,4		
Labour force participation rate	54,2	53,6	54,1	54,5	54,6	0,1	0,4		
Western Cape									
Population 15–64 yrs	3 390	3 403	3 417	3 430	3 444	14	54	0,4	1,6
Labour Force	2 281	2 271	2 295	2 309	2 356	47	75	2,0	3,3
Employed	1 754	1 772	1 784	1 805	1 806	1	52	0,1	3,0
Unemployed	527	498	510	504	550	46	23	9,1	4,4
Not economically active	1 109	1 132	1 122	1 121	1 087	-34	-22	-3,0	-2,0
Discouraged work-seekers	38	24	19	34	30	-4	-8	-11,8	-21,1
Other	1 071	1 108	1 102	1 087	1 057	-30	-14	-2,8	-1,3
Rates (%)									
Unemployment rate	23,1	21,9	22,2	21,8	23,3	1,5	0,2		
Employed/population ratio (absorption)	51,7	52,1	52,2	52,6	52,4	-0,2	0,7		
Labour force participation rate	67,3	66,7	67,1	67,3	68,4	1,1	1,1		

Due to rounding, numbers do not necessarily add up to totals.

Note: Employment refers to market production activities.

Table 2.2: Labour force characteristics by province (continued)									
	Jul-Sep 2010	Oct-Dec 2010	Jan-Mar 2011	Apr-Jun 2011	Jul-Sep 2011	Qrt-to-qrt change	Year-on-year change	Qrt-to-qrt change	Year-on-year change
	Thousand	Thousand	Thousand	Thousand	Thousand	Thousand	Thousand	Per cent	Per cent
Eastern Cape									
Population 15–64 yrs	4 131	4 143	4 155	4 167	4 179	12	48	0,3	1,2
Labour Force	1 793	1 763	1 812	1 840	1 781	-59	-12	-3,2	-0,7
Employed	1 306	1 328	1 325	1 309	1 298	-11	-8	-0,8	-0,6
Unemployed	487	435	487	531	483	-48	-4	-9,0	-0,8
Not economically active	2 337	2 380	2 343	2 327	2 399	72	62	3,1	2,7
Discouraged work-seekers	344	371	368	382	388	6	44	1,6	12,8
Other	1 993	2 009	1 975	1 945	2 011	66	18	3,4	0,9
Rates (%)									
Unemployment rate	27,2	24,7	26,9	28,9	27,1	-1,8	-0,1		
Employed/population ratio (absorption)	31,6	32,1	31,9	31,4	31,1	-0,3	-0,5		
Labour force participation rate	43,4	42,6	43,6	44,2	42,6	-1,6	-0,8		
Northern Cape									
Population 15–64 yrs	713	715	717	719	721	2	8	0,3	1,1
Labour Force	372	367	381	371	387	16	15	4,3	4,0
Employed	276	278	261	264	278	14	2	5,3	0,7
Unemployed	96	89	119	107	109	2	13	1,9	13,5
Not economically active	341	348	336	348	334	-14	-7	-4,0	-2,1
Discouraged work-seekers	37	37	38	30	34	4	-3	13,3	-8,1
Other	304	311	299	318	300	-18	-4	-5,7	-1,3
Rates (%)									
Unemployment rate	25,8	24,3	31,3	28,8	28,2	-0,6	2,4		
Employed/population ratio (absorption)	38,7	38,9	36,4	36,7	38,6	1,9	-0,1		
Labour force participation rate	52,2	51,3	53,0	51,6	53,7	2,1	1,5		

Due to rounding, numbers do not necessarily add up to totals.

Note: Employment refers to market production activities.

Table 2.2: Labour force characteristics by province (continued)									
	Jul-Sep 2010	Oct-Dec 2010	Jan-Mar 2011	Apr-Jun 2011	Jul-Sep 2011	Qrt-to-qrt change	Year-on-year change	Qrt-to-qrt change	Year-on-year change
	Thousand	Thousand	Thousand	Thousand	Thousand	Thousand	Thousand	Per cent	Per cent
Free State									
Population 15–64 yrs	1 860	1 863	1 867	1 870	1 874	4	14	0,2	0,8
Labour Force	1 091	1 077	1 082	1 074	1 109	35	18	3,3	1,6
Employed	768	785	780	772	826	54	58	7,0	7,6
Unemployed	322	292	302	303	283	-20	-39	-6,6	-12,1
Not economically active	769	787	785	796	765	-31	-4	-3,9	-0,5
Discouraged work-seekers	85	82	87	94	104	10	19	10,6	22,4
Other	684	705	698	701	660	-41	-24	-5,8	-3,5
Rates (%)									
Unemployment rate	29,5	27,1	27,9	28,2	25,5	-2,7	-4,0		
Employed/population ratio (absorption)	41,3	42,1	41,8	41,3	44,1	2,8	2,8		
Labour force participation rate	58,6	57,8	58,0	57,5	59,2	1,7	0,6		
KwaZulu-Natal									
Population 15–64 yrs	6 664	6 692	6 720	6 748	6 776	28	112	0,4	1,7
Labour Force	2 990	3 040	3 049	3 137	3 103	-34	113	-1,1	3,8
Employed	2 401	2 439	2 429	2 500	2 510	10	109	0,4	4,5
Unemployed	588	601	620	638	593	-45	5	-7,1	0,9
Not economically active	3 674	3 652	3 671	3 611	3 672	61	-2	1,7	-0,1
Discouraged work-seekers	563	540	592	604	549	-55	-14	-9,1	-2,5
Other	3 111	3 112	3 079	3 007	3 124	117	13	3,9	0,4
Rates (%)									
Unemployment rate	19,7	19,8	20,3	20,3	19,1	-1,2	-0,6		
Employed/population ratio (absorption)	36,0	36,4	36,1	37,0	37,0	0,0	1,0		
Labour force participation rate	44,9	45,4	45,4	46,5	45,8	-0,7	0,9		

Due to rounding, numbers do not necessarily add up to totals.

Note: Employment refers to market production activities.

Table 2.2: Labour force characteristics by province (concluded)									
	Jul-Sep 2010	Oct-Dec 2010	Jan-Mar 2011	Apr-Jun 2011	Jul-Sep 2011	Qrt-to-qrt change	Year-on-year change	Qrt-to-qrt change	Year-on-year change
	Thousand	Thousand	Thousand	Thousand	Thousand	Thousand	Thousand	Per cent	Per cent
North West									
Population 15–64 yrs	2 019	2 025	2 031	2 037	2 043	6	24	0,3	1,2
Labour Force	991	976	963	951	952	1	-39	0,1	-3,9
Employed	714	740	722	691	680	-11	-34	-1,6	-4,8
Unemployed	277	236	241	260	272	12	-5	4,6	-1,8
Not economically active	1 029	1 049	1 068	1 086	1 091	5	62	0,5	6,0
Discouraged work-seekers	138	187	178	233	241	8	103	3,4	74,6
Other	891	862	890	854	850	-4	-41	-0,5	-4,6
Rates (%)									
Unemployment rate	28,0	24,2	25,0	27,3	28,6	1,3	0,6		
Employed/population ratio (absorption)	35,4	36,5	35,5	33,9	33,3	-0,6	-2,1		
Labour force participation rate	49,1	48,2	47,4	46,7	46,6	-0,1	-2,5		
Gauteng									
Population 15–64 yrs	7 702	7 732	7 763	7 793	7 821	28	119	0,4	1,5
Labour Force	5 402	5 391	5 467	5 523	5 517	-6	115	-0,1	2,1
Employed	3 958	3 953	3 999	3 965	3 983	18	25	0,5	0,6
Unemployed	1 444	1 438	1 469	1 558	1 533	-25	89	-1,6	6,2
Not economically active	2 300	2 341	2 295	2 270	2 305	35	5	1,5	0,2
Discouraged work-seekers	312	309	319	231	235	4	-77	1,7	-24,7
Other	1 988	2 032	1 976	2 039	2 069	30	81	1,5	4,1
Rates (%)									
Unemployment rate	26,7	26,7	26,9	28,2	27,8	-0,4	1,1		
Employed/population ratio (absorption)	51,4	51,1	51,5	50,9	50,9	0,0	-0,5		
Labour force participation rate	70,1	69,7	70,4	70,9	70,5	-0,4	0,4		

Due to rounding, numbers do not necessarily add up to totals.

Note: Employment refers to market production activities.

Table 2.2: Labour force characteristics by province (concluded)									
	Jul-Sep 2010	Oct-Dec 2010	Jan-Mar 2011	Apr-Jun 2011	Jul-Sep 2011	Qrt-to-qrt change	Year-on-year change	Qrt-to-qrt change	Year-on-year change
	Thousand	Thousand	Thousand	Thousand	Thousand	Thousand	Thousand	Per cent	Per cent
Mpumalanga									
Population 15–64 yrs	2 297	2 307	2 316	2 326	2 336	10	39	0,4	1,7
Labour Force	1 243	1 228	1 267	1 271	1 285	14	42	1,1	3,4
Employed	890	876	877	884	911	27	21	3,1	2,4
Unemployed	353	352	390	387	374	-13	21	-3,4	5,9
Not economically active	1 055	1 079	1 049	1 055	1 051	-4	-4	-0,4	-0,4
Discouraged work-seekers	193	207	208	185	213	28	20	15,1	10,4
Other	862	872	841	870	839	-31	-23	-3,6	-2,7
Rates (%)									
Unemployment rate	28,4	28,7	30,8	30,4	29,1	-1,3	0,7		
Employed/population ratio (absorption)	38,7	38,0	37,9	38,0	39,0	1,0	0,3		
Labour force participation rate	54,1	53,2	54,7	54,6	55,0	0,4	0,9		
Limpopo									
Population 15–64 yrs	3 296	3 313	3 329	3 345	3 362	17	66	0,5	2,0
Labour Force	1 208	1 157	1 166	1 186	1 271	85	63	7,2	5,2
Employed	905	962	940	936	1 026	90	121	9,6	13,4
Unemployed	303	196	225	251	246	-5	-57	-2,0	-18,8
Not economically active	2 088	2 155	2 163	2 159	2 090	-69	2	-3,2	0,1
Discouraged work-seekers	321	393	415	413	410	-3	89	-0,7	27,7
Other	1 767	1 762	1 749	1 746	1 681	-65	-86	-3,7	-4,9
Rates (%)									
Unemployment rate	25,1	16,9	19,3	21,1	19,3	-1,8	-5,8		
Employed/population ratio (absorption)	27,5	29,0	28,2	28,0	30,5	2,5	3,0		
Labour force participation rate	36,7	35,0	35,0	35,5	37,8	2,3	1,1		

Due to rounding, numbers do not necessarily add up to totals.

Note: Employment refers to market production activities.

Table 2.3: Labour force characteristics by province – Expanded definition of unemployment									
	Jul-Sep 2010	Oct-Dec 2010	Jan-Mar 2011	Apr-Jun 2011	Jul-Sep 2011	Qrt-to-qrt change	Year-on-year change	Qrt-to-qrt change	Year-on-year change
	Thousand	Thousand	Thousand	Thousand	Thousand	Thousand	Thousand	Per cent	Per cent
South Africa									
Population 15–64 yrs	32 072	32 193	32 314	32 435	32 555	120	483	0,4	1,5
Labour Force	20 396	20 439	20 650	20 804	20 822	18	426	0,1	2,1
Employed	12 975	13 132	13 118	13 125	13 318	193	343	1,5	2,6
Unemployed	7 421	7 307	7 532	7 678	7 504	- 174	83	-2,3	1,1
Not economically active	11 677	11 754	11 664	11 632	11 733	101	56	0,9	0,5
Rates (%)									
Unemployment rate	36,4	35,8	36,5	36,9	36,0	-0,9	-0,4		
Employed/population ratio (absorption)	40,5	40,8	40,6	40,5	40,9	0,4	0,4		
Labour force participation rate	63,6	63,5	63,9	64,1	64,0	-0,1	0,4		
Western Cape									
Population 15–64 yrs	3 390	3 403	3 417	3 430	3 444	14	54	0,4	1,6
Labour Force	2 354	2 331	2 341	2 362	2 408	46	54	1,9	2,3
Employed	1 754	1 772	1 784	1 805	1 806	1	52	0,1	3,0
Unemployed	600	559	556	557	602	45	2	8,1	0,3
Not economically active	1 036	1 072	1 076	1 068	1 036	- 32	0	-3,0	0,0
Rates (%)									
Unemployment rate	25,5	24,0	23,8	23,6	25,0	1,4	-0,5		
Employed/population ratio (absorption)	51,7	52,1	52,2	52,6	52,4	-0,2	0,7		
Labour force participation rate	69,4	68,5	68,5	68,9	69,9	1,0	0,5		
Eastern Cape									
Population 15–64 yrs	4 131	4 143	4 155	4 167	4 179	12	48	0,3	1,2
Labour Force	2 191	2 214	2 244	2 280	2 234	- 46	43	-2,0	2,0
Employed	1 306	1 328	1 325	1 309	1 298	- 11	- 8	-0,8	-0,6
Unemployed	884	886	919	971	936	- 35	52	-3,6	5,9
Not economically active	1 940	1 929	1 911	1 887	1 945	58	5	3,1	0,3
Rates (%)									
Unemployment rate	40,4	40,0	41,0	42,6	41,9	-0,7	1,5		
Employed/population ratio (absorption)	31,6	32,1	31,9	31,4	31,1	-0,3	-0,5		
Labour force participation rate	53,0	53,4	54,0	54,7	53,5	-1,2	0,5		

Due to rounding, numbers do not necessarily add up to totals.

Note: Employment refers to market production activities.

Table 2.3: Labour force characteristics by province – Expanded definition of unemployment (continued)									
	Jul-Sep 2010	Oct-Dec 2010	Jan-Mar 2011	Apr-Jun 2011	Jul-Sep 2011	Qrt-to-qrt change	Year-on-year change	Qrt-to-qrt change	Year-on-year change
	Thousand	Thousand	Thousand	Thousand	Thousand	Thousand	Thousand	Per cent	Per cent
Northern Cape									
Population 15–64 yrs	713	715	717	719	721	2	8	0,3	1,1
Labour Force	432	424	441	422	435	13	3	3,1	0,7
Employed	276	278	261	264	278	14	2	5,3	0,7
Unemployed	155	146	179	157	157	0	2	0,0	1,3
Not economically active	281	291	276	297	286	- 11	5	-3,7	1,8
Rates (%)									
Unemployment rate	36,0	34,4	40,7	37,3	36,1	-1,2	0,1		
Employed/population ratio (absorption)	38,7	38,9	36,4	36,7	38,6	1,9	-0,1		
Labour force participation rate	60,4	59,3	61,4	58,6	60,3	1,7	-0,1		
Free State									
Population 15–64 yrs	1 860	1 863	1 867	1 870	1 874	4	14	0,2	0,8
Labour Force	1 229	1 208	1 222	1 225	1 253	28	24	2,3	2,0
Employed	768	785	780	772	826	54	58	7,0	7,6
Unemployed	461	423	443	453	426	-27	- 35	-6,0	-7,6
Not economically active	631	655	645	645	621	- 24	-10	-3,7	-1,6
Rates (%)									
Unemployment rate	37,5	35,0	36,2	37,0	34,0	-3,0	-3,5		
Employed/population ratio (absorption)	41,3	42,1	41,8	41,3	44,1	2,8	2,8		
Labour force participation rate	66,1	64,8	65,5	65,5	66,8	1,3	0,7		
KwaZulu-Natal									
Population 15–64 yrs	6 664	6 692	6 720	6 748	6 776	28	112	0,4	1,7
Labour Force	3 916	3 950	3 982	4 101	4 022	- 79	106	-1,9	2,7
Employed	2 401	2 439	2 429	2 500	2 510	10	109	0,4	4,5
Unemployed	1 514	1 511	1 552	1 602	1 512	-90	- 2	-5,6	-0,1
Not economically active	2 748	2 742	2 738	2 647	2 754	107	6	4,0	0,2
Rates (%)									
Unemployment rate	38,7	38,3	39,0	39,1	37,6	-1,5	-1,1		
Employed/population ratio (absorption)	36,0	36,4	36,1	37,0	37,0	0,0	1,0		
Labour force participation rate	58,7	59,0	59,2	60,8	59,4	-1,4	0,7		

Due to rounding, numbers do not necessarily add up to totals.
 Note: Employment refers to market production activities.

Table 2.3: Labour force characteristics by province – Expanded definition of unemployment (continued)									
	Jul-Sep 2010	Oct-Dec 2010	Jan-Mar 2011	Apr-Jun 2011	Jul-Sep 2011	Qrt-to-qrt change	Year-on- year change	Qrt-to-qrt change	Year-on-year change
	Thousand	Thousand	Thousand	Thousand	Thousand	Thousand	Thousand	Per cent	Per cent
North West									
Population 15–64 yrs	2 019	2 025	2 031	2 037	2 043	6	24	0,3	1,2
Labour Force	1 243	1 267	1 254	1 286	1 264	- 22	21	-1,7	1,7
Employed	714	740	722	691	680	- 11	- 34	-1,6	-4,8
Unemployed	529	527	532	595	584	-11	55	-1,8	10,4
Not economically active	776	758	777	751	779	28	3	3,7	0,4
Rates (%)									
Unemployment rate	42,6	41,6	42,4	46,3	46,2	-0,1	3,6		
Employed/population ratio (absorption)	35,4	36,5	35,5	33,9	33,3	-0,6	-2,1		
Labour force participation rate	61,6	62,6	61,7	63,1	61,9	-1,2	0,3		
Gauteng									
Population 15–64 yrs	7 702	7 732	7 763	7 793	7 821	28	119	0,4	1,5
Labour Force	5 808	5 797	5 866	5 821	5 827	6	19	0,1	0,3
Employed	3 958	3 953	3 999	3 965	3 983	18	25	0,5	0,6
Unemployed	1 850	1 844	1 867	1 857	1 844	-13	- 6	-0,7	-0,3
Not economically active	1 894	1 936	1 897	1 972	1 994	22	100	1,1	5,3
Rates (%)									
Unemployment rate	31,9	31,8	31,8	31,9	31,6	-0,3	-0,3		
Employed/population ratio (absorption)	51,4	51,1	51,5	50,9	50,9	0,0	-0,5		
Labour force participation rate	75,4	75,0	75,6	74,7	74,5	-0,2	-0,9		
Mpumalanga									
Population 15–64 yrs	2 297	2 307	2 316	2 326	2 336	10	39	0,4	1,7
Labour Force	1 567	1 574	1 600	1 573	1 591	18	24	1,1	1,5
Employed	890	876	877	884	911	27	21	3,1	2,4
Unemployed	677	698	722	689	680	-9	3	-1,3	0,4
Not economically active	730	733	717	753	745	- 8	15	-1,1	2,1
Rates (%)									
Unemployment rate	43,2	44,3	45,2	43,8	42,7	-1,1	-0,5		
Employed/population ratio (absorption)	38,7	38,0	37,9	38,0	39,0	1,0	0,3		
Labour force participation rate	68,2	68,2	69,0	67,6	68,1	0,5	-0,1		

Due to rounding, numbers do not necessarily add up to totals.
 Note: Employment refers to market production activities.

Table 2.3: Labour force characteristics by province – Expanded definition of unemployment (concluded)									
	Jul-Sep 2010	Oct-Dec 2010	Jan-Mar 2011	Apr-Jun 2011	Jul-Sep 2011	Qrt-to-qrt change	Year-on- year change	Qrt-to-qrt change	Year-on-year change
	Thousand	Thousand	Thousand	Thousand	Thousand	Thousand	Thousand	Per cent	Per cent
Limpopo									
Population 15–64 yrs	3 296	3 313	3 329	3 345	3 362	17	66	0,5	2
Labour Force	1 656	1 674	1 702	1 733	1 789	56	133	3,2	8,0
Employed	905	962	940	936	1 026	90	121	9,6	13,4
Unemployed	751	713	761	798	763	-35	12	-4,4	1,6
Not economically active	1 641	1 638	1 627	1 612	1 573	- 39	-68	-2,4	-4,1
Rates (%)									
Unemployment rate	45,4	42,6	44,7	46,0	42,6	-3,4	-2,8		
Employed/population ratio (absorption)	27,5	29,0	28,2	28,0	30,5	2,5	3,0		
Labour force participation rate	50,2	50,6	51,1	51,8	53,2	1,4	3,0		

Due to rounding, numbers do not necessarily add up to totals.
 Note: Employment refers to market production activities.

Table 3.1: Employed by industry and sex – South Africa									
	Jul-Sep 2010	Oct-Dec 2010	Jan-Mar 2011	Apr-Jun 2011	Jul-Sep 2011	Qrt-to-qrt change	Year-on-year change	Qrt-to-qrt change	Year-on-year change
	Thousand	Thousand	Thousand	Thousand	Thousand	Thousand	Thousand	Per cent	Per cent
Both sexes	12 975	13 132	13 118	13 125	13 318	193	343	1,5	2,6
Agriculture	640	627	603	598	624	26	-16	4,3	-2,5
Mining	303	298	313	282	324	42	21	14,9	6,9
Manufacturing	1 713	1 783	1 803	1 735	1 737	2	24	0,1	1,4
Utilities	99	94	97	93	73	-20	-26	-21,5	-26,3
Construction	1 076	1 056	1 031	1 043	1 086	43	10	4,1	0,9
Trade	2 947	2 975	2 962	2 944	3 012	68	65	2,3	2,2
Transport	773	761	727	777	756	-21	-17	-2,7	-2,2
Finance	1 625	1 594	1 631	1 704	1 768	64	143	3,8	8,8
Community and social services	2 678	2 826	2 828	2 831	2 836	5	158	0,2	5,9
Private households	1 119	1 117	1 118	1 117	1 098	-19	-21	-1,7	-1,9
Other	1	1	5	3	4	1	3	33,3	.
Women	5 601	5 698	5 688	5 717	5 807	90	206	1,6	3,7
Agriculture	202	209	208	191	205	14	3	7,3	1,5
Mining	33	41	37	32	31	-1	-2	-3,1	-6,1
Manufacturing	574	613	629	592	580	-12	6	-2,0	1,0
Utilities	25	28	31	22	13	-9	-12	-40,9	-48,0
Construction	116	110	108	119	112	-7	-4	-5,9	-3,4
Trade	1 398	1 405	1 397	1 376	1 414	38	16	2,8	1,1
Transport	155	152	130	148	140	-8	-15	-5,4	-9,7
Finance	670	645	662	747	781	34	111	4,6	16,6
Community and social services	1 549	1 638	1 621	1 628	1 672	44	123	2,7	7,9
Private households	879	856	863	863	860	-3	-19	-0,3	-2,2
Other	1	1	3	1	1	0	0	0,0	0,0
Men	7 373	7 434	7 430	7 408	7 511	103	138	1,4	1,9
Agriculture	438	418	395	407	419	12	-19	2,9	-4,3
Mining	270	257	276	249	292	43	22	17,3	8,1
Manufacturing	1 139	1 171	1 174	1 143	1 156	13	17	1,1	1,5
Utilities	74	67	66	71	60	-11	-14	-15,5	-18,9
Construction	960	946	923	925	975	50	15	5,4	1,6
Trade	1 549	1 570	1 565	1 568	1 599	31	50	2,0	3,2
Transport	618	609	597	629	616	-13	-2	-2,1	-0,3
Finance	955	949	969	957	987	30	32	3,1	3,4
Community and social services	1 129	1 188	1 207	1 203	1 164	-39	35	-3,2	3,1
Private households	241	261	255	254	239	-15	-2	-5,9	-0,8
Other	.	.	2	2	3	1	.	.	.

Table 3.2: Employed by industry and province									
	Jul-Sep 2010	Oct-Dec 2010	Jan-Mar 2011	Apr-Jun 2011	Jul-Sep 2011	Qrt-to-qrt change	Year-on-year change	Qrt-to-qrt change	Year-on-year change
	Thousand	Thousand	Thousand	Thousand	Thousand	Thousand	Thousand	Per cent	Per cent
Agriculture	640	627	603	598	624	26	-16	4,3	-2,5
Western Cape	136	122	121	100	113	13	-23	13,0	-16,9
Eastern Cape	76	66	64	61	67	6	-9	9,8	-11,8
Northern Cape	40	54	53	47	47	0	7	0,0	17,5
Free State	67	64	62	73	68	-5	1	-6,8	1,5
KwaZulu-Natal	119	121	108	99	97	-2	-22	-2,0	-18,5
North West	35	31	37	32	31	-1	-4	-3,1	-11,4
Gauteng	34	27	34	34	39	5	5	14,7	14,7
Mpumalanga	74	74	71	78	75	-3	1	-3,8	1,4
Limpopo	58	67	52	74	87	13	29	17,6	50,0
Mining	303	298	313	282	324	42	21	14,9	6,9
Western Cape	3	3	2	4	6	2	3	.	.
Eastern Cape	2	.	2	.	1	.	-1	.	.
Northern Cape	12	9	11	10	10	0	-2	0,0	-16,7
Free State	32	29	21	16	21	5	-11	31,3	-34,4
KwaZulu-Natal	7	13	14	6	16	10	9	.	.
North West	106	123	131	108	114	6	8	5,6	7,5
Gauteng	38	23	22	31	25	-6	-13	-19,4	-34,2
Mpumalanga	58	50	52	52	72	20	14	38,5	24,1
Limpopo	46	48	57	55	58	3	12	5,5	26,1
Manufacturing	1 713	1 783	1 803	1 735	1 737	2	24	0,1	1,4
Western Cape	261	283	290	277	276	-1	15	-0,4	5,7
Eastern Cape	159	163	183	201	171	-30	12	-14,9	7,5
Northern Cape	11	12	14	9	13	4	2	44,4	18,2
Free State	66	62	63	60	65	5	-1	8,3	-1,5
KwaZulu-Natal	371	371	389	397	400	3	29	0,8	7,8
North West	69	77	62	63	67	4	-2	6,3	-2,9
Gauteng	630	667	663	581	600	19	-30	3,3	-4,8
Mpumalanga	81	80	77	75	77	2	-4	2,7	-4,9
Limpopo	66	69	62	71	67	-4	1	-5,6	1,5

For all values of 10 000 or lower, the sample size is too small for reliable estimates.
 Due to rounding, numbers do not necessarily add up to totals.

Table 3.2: Employed by industry and province (continued)									
	Jul-Sep 2010	Oct-Dec 2010	Jan-Mar 2011	Apr-Jun 2011	Jul-Sep 2011	Qrt-to-qrt change	Year-on-year change	Qrt-to-qrt change	Year-on-year change
	Thousand	Thousand	Thousand	Thousand	Thousand	Thousand	Thousand	Per cent	Per cent
Utilities	99	94	97	93	73	-20	-26	-21,5	-26,3
Western Cape	11	10	11	12	10	-2	-1	-16,7	-9,1
Eastern Cape	4	2	6	6	5	-1	1	-16,7	25,0
Northern Cape	1	1		2	3	1	2	50,0	.
Free State	3	4	4	4	3	-1	0	-25,0	0,0
KwaZulu-Natal	9	17	19	18	8	-10	-1	-55,6	-11,1
North West	2	1	2	3	3	0	1	0,0	50,0
Gauteng	42	28	25	19	24	5	-18	26,3	-42,9
Mpumalanga	21	23	22	23	14	-9	-7	-39,1	-33,3
Limpopo	7	8	9	6	5	-1	-2	-16,7	-28,6
Construction	1 076	1 056	1 031	1 043	1 086	43	10	4,1	0,9
Western Cape	141	130	124	118	129	11	-12	9,3	-8,5
Eastern Cape	120	129	120	118	107	-11	-13	-9,3	-10,8
Northern Cape	20	18	14	13	21	8	1	61,5	5,0
Free State	51	54	56	54	108	54	57	.	.
KwaZulu-Natal	231	225	226	235	234	-1	3	-0,4	1,3
North West	38	43	45	45	41	-4	3	-8,9	7,9
Gauteng	308	274	284	313	259	-54	-49	-17,3	-15,9
Mpumalanga	72	74	69	69	76	7	4	10,1	5,6
Limpopo	94	109	93	78	111	33	17	42,3	18,1
Trade	2 947	2 975	2 962	2 944	3 012	68	65	2,3	2,2
Western Cape	369	379	388	406	397	-9	28	-2,2	7,6
Eastern Cape	328	313	295	286	296	10	-32	3,5	-9,8
Northern Cape	42	39	35	39	40	1	-2	2,6	-4,8
Free State	181	169	167	178	176	-2	-5	-1,1	-2,8
KwaZulu-Natal	509	523	536	555	605	50	96	9	18,9
North West	164	162	150	141	130	-11	-34	-7,8	-20,7
Gauteng	907	922	930	899	894	-5	-13	-0,6	-1,4
Mpumalanga	214	219	218	217	222	5	8	2,3	3,7
Limpopo	233	250	243	224	252	28	19	12,5	8,2

For all values of 10 000 or lower, the sample size is too small for reliable estimates.
 Due to rounding, numbers do not necessarily add up to totals.

Table 3.2: Employed by industry and province (continued)									
	Jul-Sep 2010	Oct-Dec 2010	Jan-Mar 2011	Apr-Jun 2011	Jul-Sep 2011	Qrt-to-qrt change	Year-on-year change	Qrt-to-qrt change	Year-on-year change
	Thousand	Thousand	Thousand	Thousand	Thousand	Thousand	Thousand	Per cent	Per cent
Transport	773	761	727	777	756	-21	-17	-2,7	-2,2
Western Cape	107	112	113	106	105	-1	-2	-0,9	-1,9
Eastern Cape	67	70	57	74	75	1	8	1,4	11,9
Northern Cape	11	12	14	11	10	-1	-1	-9,1	-9,1
Free State	33	37	36	31	33	2	0	6,5	0,0
KwaZulu-Natal	194	185	174	181	156	-25	-38	-13,8	-19,6
North West	22	21	21	24	22	-2	0	-8,3	0,0
Gauteng	256	250	244	278	278	0	22	0	8,6
Mpumalanga	42	34	34	39	42	3	0	7,7	0,0
Limpopo	42	39	33	34	35	1	-7	2,9	-16,7
Finance	1 625	1 594	1 631	1 704	1 768	64	143	3,8	8,8
Western Cape	252	244	239	286	288	2	36	0,7	14,3
Eastern Cape	102	110	125	139	138	-1	36	-0,7	35,3
Northern Cape	26	22	15	24	23	-1	-3	-4,2	-11,5
Free State	73	83	80	76	75	-1	2	-1,3	2,7
KwaZulu-Natal	279	266	259	274	287	13	8	4,7	2,9
North West	62	55	61	55	63	8	1	14,5	1,6
Gauteng	677	675	705	705	744	39	67	5,5	9,9
Mpumalanga	89	82	82	82	81	-1	-8	-1,2	-9,0
Limpopo	64	58	64	64	69	5	5	7,8	7,8
Community and social services	2 678	2 826	2 828	2 831	2 836	5	158	0,2	5,9
Western Cape	364	377	390	382	364	-18	0	-4,7	0,0
Eastern Cape	330	356	333	326	330	4	0	1,2	0,0
Northern Cape	85	79	79	83	83	0	-2	0	-2,4
Free State	173	191	199	197	197	0	24	0	13,9
KwaZulu-Natal	470	510	514	509	486	-23	16	-4,5	3,4
North West	146	168	152	151	151	0	5	0,0	3,4
Gauteng	744	770	760	769	805	36	61	4,7	8,2
Mpumalanga	168	160	172	164	163	-1	-5	-0,6	-3,0
Limpopo	198	215	227	249	257	8	59	3,2	29,8

For all values of 10 000 or lower, the sample size is too small for reliable estimates.
 Due to rounding, numbers do not necessarily add up to totals.

Table 3.2: Employed by industry and province (concluded)									
	Jul-Sep 2010	Oct-Dec 2010	Jan-Mar 2011	Apr-Jun 2011	Jul-Sep 2011	Qrt-to-qrt change	Year-on-year change	Qrt-to-qrt change	Year-on-year change
	Thousand	Thousand	Thousand	Thousand	Thousand	Thousand	Thousand	Per cent	Per cent
Private households	1 119	1 117	1 118	1 117	1 098	-19	-21	-1,7	-1,9
Western Cape	110	113	105	113	119	6	9	5,3	8,2
Eastern Cape	118	120	139	97	106	9	-12	9,3	-10,2
Northern Cape	29	32	25	26	27	1	-2	3,8	-6,9
Free State	89	91	90	83	82	-1	-7	-1,2	-7,9
KwaZulu-Natal	213	208	188	226	220	-6	7	-2,7	3,3
North West	71	59	61	67	59	-8	-12	-11,9	-16,9
Gauteng	322	317	328	336	312	-24	-10	-7,1	-3,1
Mpumalanga	71	80	81	87	90	3	19	3,4	26,8
Limpopo	96	98	101	81	84	3	-12	3,7	-12,5

For all values of 10 000 or lower, the sample size is too small for reliable estimates.
 Due to rounding, numbers do not necessarily add up to totals.

Table 3.3: Employed by sector and industry – South Africa									
	Jul-Sep 2010	Oct-Dec 2010	Jan-Mar 2011	Apr-Jun 2011	Jul-Sep 2011	Qrt-to-qrt change	Year-on-year change	Qrt-to-qrt change	Year-on-year change
	Thousand	Thousand	Thousand	Thousand	Thousand	Thousand	Thousand	Per cent	Per cent
Total employed	12 975	13 132	13 118	13 125	13 318	193	343	1,5	2,6
Formal and informal sector (Non-agricultural)	11 215	11 388	11 397	11 411	11 596	185	381	1,6	3,4
Mining	303	298	313	282	324	42	21	14,9	6,9
Manufacturing	1 713	1 783	1 803	1 735	1 737	2	24	0,1	1,4
Utilities	99	94	97	93	73	-20	-26	-21,5	-26,3
Construction	1 076	1 056	1 031	1 043	1 086	43	10	4,1	0,9
Trade	2 947	2 975	2 962	2 944	3 012	68	65	2,3	2,2
Transport	773	761	727	777	756	-21	-17	-2,7	-2,2
Finance	1 625	1 594	1 631	1 704	1 768	64	143	3,8	8,8
Community and social services	2 678	2 826	2 828	2 831	2 836	5	158	0,2	5,9
Other	1	1	5	3	4	1	3	33,3	.
Formal sector (Non-agricultural)	9 043	9 163	9 219	9 198	9 436	238	393	2,6	4,3
Mining	298	297	306	280	323	43	25	15,4	8,4
Manufacturing	1 508	1 556	1 584	1 513	1 527	14	19	0,9	1,3
Utilities	98	91	96	90	71	-19	-27	-21,1	-27,6
Construction	766	737	739	730	783	53	17	7,3	2,2
Trade	1 924	1 927	1 935	1 938	1 979	41	55	2,1	2,9
Transport	561	573	536	567	572	5	11	0,9	2,0
Finance	1 485	1 452	1 505	1 549	1 618	69	133	4,5	9,0
Community and social services	2 402	2 529	2 513	2 529	2 559	30	157	1,2	6,5
Other	1	1	5	2	4	2	3	.	.
Informal sector (Non-agricultural)	2 172	2 225	2 179	2 213	2 160	-53	-12	-2,4	-0,6
Mining	5	1	7	1	1	0	-4	0,0	.
Manufacturing	205	227	219	222	209	-13	4	-5,9	2,0
Utilities	1	3	1	4	2	-2	1	.	.
Construction	310	319	293	314	303	-11	-7	-3,5	-2,3
Trade	1 023	1 048	1 027	1 006	1 033	27	10	2,7	1,0
Transport	212	188	191	210	184	-26	-28	-12,4	-13,2
Finance	140	142	126	155	150	-5	10	-3,2	7,1
Community and social services	276	297	315	301	277	-24	1	-8,0	0,4
Other	.	.	.	1
Agriculture	640	627	603	598	624	26	-16	4,3	-2,5
Private households	1 119	1 117	1 118	1 117	1 098	- 19	- 21	- 2	- 2

For all values of 10 000 or lower, the sample size is too small for reliable estimates.
 Due to rounding, numbers do not necessarily add up to totals.

Table 3.4: Employed by province and sector									
	Jul-Sep 2010	Oct-Dec 2010	Jan-Mar 2011	Apr-Jun 2011	Jul-Sep 2011	Qrt-to-qrt change	Year-on-year change	Qrt-to-qrt change	Year-on-year change
	Thousand	Thousand	Thousand	Thousand	Thousand	Thousand	Thousand	Per cent	Per cent
South Africa	12 975	13 132	13 118	13 125	13 318	193	343	1,5	2,6
Formal sector (Non-agricultural)	9 043	9 163	9 219	9 198	9 436	238	393	2,6	4,3
Informal sector (Non-agricultural)	2 172	2 225	2 179	2 213	2 160	-53	-12	-2,4	-0,6
Agriculture	640	627	603	598	624	26	-16	4,3	-2,5
Private households	1 119	1 117	1 118	1 117	1 098	-19	-21	-1,7	-1,9
Western Cape	1 754	1 772	1 784	1 805	1 806	1	52	0,1	3,0
Formal sector (Non-agricultural)	1 318	1 361	1 366	1 414	1 387	-27	69	-1,9	5,2
Informal sector (Non-agricultural)	190	177	192	178	188	10	-2	5,6	-1,1
Agriculture	136	122	121	100	113	13	-23	13,0	-16,9
Private households	110	113	105	113	119	6	9	5,3	8,2
Eastern Cape	1 306	1 328	1 325	1 309	1 298	-11	-8	-0,8	-0,6
Formal sector (Non-agricultural)	817	844	864	871	876	5	59	0,6	7,2
Informal sector (Non-agricultural)	295	298	258	279	249	-30	-46	-10,8	-15,6
Agriculture	76	66	64	61	67	6	-9	9,8	-11,8
Private households	118	120	139	97	106	9	-12	9,3	-10,2
Northern Cape	276	278	261	264	278	14	2	5,3	0,7
Formal sector (Non-agricultural)	173	161	152	162	170	8	-3	4,9	-1,7
Informal sector (Non-agricultural)	35	31	31	28	34	6	-1	21,4	-2,9
Agriculture	40	54	53	47	47	0	7	0,0	17,5
Private households	29	32	25	26	27	1	-2	3,8	-6,9
Free State	768	785	780	772	826	54	58	7,0	7,6
Formal sector (Non-agricultural)	490	502	495	480	544	64	54	13,3	11,0
Informal sector (Non-agricultural)	122	128	132	136	133	-3	11	-2,2	9,0
Agriculture	67	64	62	73	68	-5	1	-6,8	1,5
Private households	89	91	90	83	82	-1	-7	-1,2	-7,9
KwaZulu-Natal	2 401	2 439	2 429	2 500	2 510	10	109	0,4	4,5
Formal sector (Non-agricultural)	1 651	1 667	1 672	1 688	1 688	0	37	0,0	2,2
Informal sector (Non-agricultural)	419	443	462	487	505	18	86	3,7	20,5
Agriculture	119	121	108	99	97	-2	-22	-2,0	-18,5
Private households	213	208	188	226	220	-6	7	-2,7	3,3

For all values of 10 000 or lower, the sample size is too small for reliable estimates.
 Due to rounding, numbers do not necessarily add up to totals.

Table 3.4: Employed by province and sector (concluded)									
	Jul-Sep 2010	Oct-Dec 2010	Jan-Mar 2011	Apr-Jun 2011	Jul-Sep 2011	Qrt-to-qrt change	Year-on-year change	Qrt-to-qrt change	Year-on-year change
	Thousand	Thousand	Thousand	Thousand	Thousand	Thousand	Thousand	Per cent	Per cent
North West	714	740	722	691	680	-11	-34	-1,6	-4,8
Formal sector (Non-agricultural)	507	559	534	504	506	2	-1	0,4	-0,2
Informal sector (Non-agricultural)	101	90	89	87	85	-2	-16	-2,3	-15,8
Agriculture	35	31	37	32	31	-1	-4	-3,1	-11,4
Private households	71	59	61	67	59	-8	-12	-11,9	-16,9
Gauteng	3 958	3 953	3 999	3 965	3 983	18	25	0,5	0,6
Formal sector (Non-agricultural)	3 065	3 061	3 099	3 053	3 126	73	61	2,4	2,0
Informal sector (Non-agricultural)	537	547	538	543	506	-37	-31	-6,8	-5,8
Agriculture	34	27	34	34	39	5	5	14,7	14,7
Private households	322	317	328	336	312	-24	-10	-7,1	-3,1
Mpumalanga	890	876	877	884	911	27	21	3,1	2,4
Formal sector (Non-agricultural)	557	536	535	519	563	44	6	8,5	1,1
Informal sector (Non-agricultural)	187	186	191	201	183	-18	-4	-9,0	-2,1
Agriculture	74	74	71	78	75	-3	1	-3,8	1,4
Private households	71	80	81	87	90	3	19	3,4	26,8
Limpopo	905	962	940	936	1 026	90	121	9,6	13,4
Formal sector (Non-agricultural)	465	471	502	507	577	70	112	13,8	24,1
Informal sector (Non-agricultural)	286	325	286	274	278	4	-8	1,5	-2,8
Agriculture	58	67	52	74	87	13	29	17,6	50,0
Private households	96	98	101	81	84	3	-12	3,7	-12,5

For all values of 10 000 or lower, the sample size is too small for reliable estimates.
 Due to rounding, numbers do not necessarily add up to totals.

Table 3.5: Employed by sex and occupation – South Africa									
	Jul-Sep 2010	Oct-Dec 2010	Jan-Mar 2011	Apr-Jun 2011	Jul-Sep 2011	Qrt-to-qrt change	Year-on-year change	Qrt-to-qrt change	Year-on-year change
	Thousand	Thousand	Thousand	Thousand	Thousand	Thousand	Thousand	Per cent	Per cent
Both sexes	12 975	13 132	13 118	13 125	13 318	193	343	1,5	2,6
Manager	1 069	1 124	1 136	1 124	1 130	6	61	0,5	5,7
Professional	705	762	750	762	763	1	58	0,1	8,2
Technician	1 418	1 469	1 461	1 469	1 440	-29	22	-2,0	1,6
Clerk	1 411	1 434	1 341	1 358	1 426	68	15	5,0	1,1
Sales and services	1 858	1 882	1 904	1 944	1 975	31	117	1,6	6,3
Skilled agriculture	76	73	75	71	61	-10	-15	-14,1	-19,7
Craft and related trade	1 607	1 566	1 621	1 576	1 655	79	48	5,0	3,0
Plant and machine operator	1 162	1 125	1 134	1 121	1 097	-24	-65	-2,1	-5,6
Elementary	2 782	2 829	2 821	2 824	2 894	70	112	2,5	4,0
Domestic worker	887	869	877	876	878	2	-9	0,2	-1,0
Women	5 601	5 698	5 688	5 717	5 807	90	206	1,6	3,7
Manager	328	357	361	352	349	-3	21	-0,9	6,4
Professional	327	343	328	351	373	22	46	6,3	14,1
Technician	773	811	811	823	796	-27	23	-3,3	3,0
Clerk	969	985	931	941	988	47	19	5,0	2,0
Sales and services	826	838	826	843	875	32	49	3,8	5,9
Skilled agriculture	22	21	22	18	20	2	-2	11,1	-9,1
Craft and related trade	177	188	203	193	185	-8	8	-4,1	4,5
Plant and machine operator	171	163	178	166	166	0	-5	0,0	-2,9
Elementary	1 150	1 166	1 188	1 189	1 211	22	61	1,9	5,3
Domestic worker	858	826	842	841	843	2	-15	0,2	-1,7
Men	7 373	7 434	7 430	7 408	7 511	103	138	1,4	1,9
Manager	741	767	775	772	781	9	40	1,2	5,4
Professional	378	419	421	411	390	-21	12	-5,1	3,2
Technician	645	658	650	647	643	-4	-2	-0,6	-0,3
Clerk	441	449	409	416	437	21	-4	5,0	-0,9
Sales and services	1 032	1 043	1 078	1 102	1 100	-2	68	-0,2	6,6
Skilled agriculture	54	52	53	52	41	-11	-13	-21,2	-24,1
Craft and related trade	1 430	1 378	1 418	1 383	1 471	88	41	6,4	2,9
Plant and machine operator	991	962	956	955	931	-24	-60	-2,5	-6,1
Elementary	1 632	1 663	1 633	1 635	1 683	48	51	2,9	3,1
Domestic worker	29	43	35	36	34	-2	5	-5,6	17,2

For all values of 10 000 or lower, the sample size is too small for reliable estimates.
 Due to rounding, numbers do not necessarily add up to totals.

Table 3.7: Employed by sex and status in employment – South Africa									
	Jul-Sep 2010	Oct-Dec 2010	Jan-Mar 2011	Apr-Jun 2011	Jul-Sep 2011	Qrt-to-qrt change	Year-on-year change	Qrt-to-qrt change	Year-on-year change
	Thousand	Thousand	Thousand	Thousand	Thousand	Thousand	Thousand	Per cent	Per cent
Both sexes	12 975	13 132	13 118	13 125	13 318	193	343	1,5	2,6
Employee	10 935	11 039	11 061	11 056	11 263	207	328	1,9	3,0
Employer	711	754	726	748	713	-35	2	-4,7	0,3
Own-account worker	1 218	1 240	1 230	1 224	1 231	7	13	0,6	1,1
Unpaid household member	110	99	102	97	112	15	2	15,5	1,8
Women	5 601	5 698	5 688	5 717	5 807	90	206	1,6	3,7
Employee	4 783	4 857	4 870	4 892	5 001	109	218	2,2	4,6
Employer	167	171	173	168	158	-10	-9	-6,0	-5,4
Own-account worker	587	613	581	589	584	-5	-3	-0,8	-0,5
Unpaid household member	65	56	65	69	65	-4	0	-5,8	0,0
Men	7 373	7 434	7 430	7 408	7 511	103	138	1,4	1,9
Employee	6 153	6 182	6 191	6 164	6 262	98	109	1,6	1,8
Employer	544	583	553	580	555	-25	11	-4,3	2,0
Own-account worker	631	627	649	636	647	11	16	1,7	2,5
Unpaid household member	45	43	37	28	47	19	2	67,9	4,4

For all values of 10 000 or lower, the sample size is too small for reliable estimates.
 Due to rounding, numbers do not necessarily add up to totals.

Table 3.8: Employed by sex and usual hours of work – South Africa									
	Jul-Sep 2010	Oct-Dec 2010	Jan-Mar 2011	Apr-Jun 2011	Jul-Sep 2011	Qrt-to-qrt change	Year-on-year change	Qrt-to-qrt change	Year-on-year change
	Thousand	Thousand	Thousand	Thousand	Thousand	Thousand	Thousand	Per cent	Per cent
Both sexes	12 975	13 132	13 118	13 125	13 318	193	343	1,5	2,6
Working less than 15 hours per week	230	246	220	234	227	-7	-3	-3,0	-1,3
Working 15–29 hours per week	745	783	768	744	779	35	34	4,7	4,6
Working 30–39 hours per week	964	974	920	963	957	-6	-7	-0,6	-0,7
Working 40–45 hours per week	7 131	7 082	7 168	7 177	7 389	212	258	3,0	3,6
Working more than 45 hours per week	3 904	4 047	4 044	4 008	3 966	-42	62	-1,0	1,6
Women	5 601	5 698	5 688	5 717	5 807	90	206	1,6	3,7
Working less than 15 hours per week	139	143	134	129	140	11	1	8,5	0,7
Working 15–29 hours per week	495	498	498	485	485	0	-10	0,0	-2,0
Working 30–39 hours per week	609	596	565	583	586	3	-23	0,5	-3,8
Working 40–45 hours per week	3 051	3 076	3 123	3 102	3 232	130	181	4,2	5,9
Working more than 45 hours per week	1 308	1 384	1 369	1 419	1 364	-55	56	-3,9	4,3
Men	7 373	7 434	7 430	7 408	7 511	103	138	1,4	1,9
Working less than 15 hours per week	92	103	86	106	87	-19	-5	-17,9	-5,4
Working 15–29 hours per week	250	285	269	258	293	35	43	13,6	17,2
Working 30–39 hours per week	355	377	355	380	371	-9	16	-2,4	4,5
Working 40–45 hours per week	4 080	4 006	4 045	4 075	4 157	82	77	2,0	1,9
Working more than 45 hours per week	2 596	2 663	2 675	2 589	2 602	13	6	0,5	0,2

For all values of 10 000 or lower, the sample size is too small for reliable estimates.
 Due to rounding, numbers do not necessarily add up to totals.

Table 3.9: Time-related underemployment – South Africa									
	Jul-Sep 2010	Oct-Dec 2010	Jan-Mar 2011	Apr-Jun 2011	Jul-Sep 2011	Qrt-to-qrt change	Year-on-year change	Qrt-to-qrt change	Year-on- year change
	Thousand	Thousand	Thousand	Thousand	Thousand	Thousand	Thousand	Per cent	Per cent
Both sexes	527	496	525	519	490	-29	-37	-5,6	-7,0
Women	327	296	327	304	297	-7	-30	-2,3	-9,2
Men	200	200	198	215	193	-22	-7	-10,2	-3,5
As percentage of the labour force (both sexes)	3,0	2,9	3,0	2,9	2,8	-0,1	-0,2		
Women	4,2	3,8	4,1	3,8	3,7	-0,1	-0,5		
Men	2,1	2,1	2,1	2,2	2,0	-0,2	-0,1		
As percentage of total employment (both sexes)	4,1	3,8	4,0	4,0	3,7	-0,3	-0,4		
Women	5,8	5,2	5,7	5,3	5,1	-0,2	-0,7		
Men	2,7	2,7	2,7	2,9	2,6	-0,3	-0,1		
Industry	527	496	525	519	490	-29	-37	-5,6	-7,0
Agriculture	11	11	13	6	10	4	-1	.	-9,1
Mining	.	0	.	0	0	0	.	.	.
Manufacturing	24	26	27	39	37	-2	13	-5,1	54,2
Utilities
Construction	57	53	45	56	55	-1	-2	-1,8	-3,5
Trade	116	106	101	106	83	-23	-33	-21,7	-28,4
Transport	14	10	13	15	10	-5	-4	-33,3	-28,6
Finance	23	30	33	31	45	14	22	45,2	.
Community and social services	80	78	68	68	74	6	-6	8,8	-7,5
Private households	203	181	225	196	176	-20	-27	-10,2	-13,3
Occupation	527	496	525	519	490	-29	-37	-5,6	-7,0
Manager	7	11	14	11	18	7	11	.	.
Professional	8	5	5	1	7	6	-1	.	-12,5
Technician	28	27	28	29	26	-3	-2	-10,3	-7,1
Clerk	11	18	20	20	20	0	9	0,0	.
Sales and services	62	65	51	46	43	-3	-19	-6,5	-30,6
Skilled agriculture	.	.	4	1	3	2	3	.	.
Craft and related trade	65	56	46	74	62	-12	-3	-16,2	-4,6
Plant and machine operator	9	6	12	14	10	-4	1	-28,6	11,1
Elementary	177	171	177	180	168	-12	-9	-6,7	-5,1
Domestic worker	159	136	167	142	133	-9	-26	-6,3	-16,4

Table 4: Characteristics of the unemployed – South Africa									
	Jul-Sep 2010	Oct-Dec 2010	Jan-Mar 2011	Apr-Jun 2011	Jul-Sep 2011	Qrt-to-qrt change	Year-on-year change	Qrt-to-qrt change	Year-on- year change
	Thousand	Thousand	Thousand	Thousand	Thousand	Thousand	Thousand	Per cent	Per cent
Unemployed	4 396	4 137	4 364	4 538	4 442	-96	46	-2,1	1,0
Job losers	1 376	1 292	1 325	1 359	1 339	- 20	- 37	-1,5	-2,7
Job leavers	260	253	270	255	264	9	4	3,5	1,5
New entrants	1 944	1 782	1 896	2 036	1 973	- 63	29	-3,1	1,5
Re-entrants	184	171	189	188	218	30	34	16,0	18,5
Other	632	639	684	700	648	- 52	16	-7,4	2,5
Unemployed	4 396	4 137	4 364	4 538	4 442	- 96	46	-2,1	1,0
Long-term unemployment (1 year and more)	2 891	2 815	2 979	3 093	3 029	- 64	138	-2,1	4,8
Short-term unemployment (less than 1 year)	1 505	1 322	1 385	1 444	1 413	- 31	- 92	-2,1	-6,1
Long-term unemployment (%)									
Proportion of the labour force	16,6	16,3	17,0	17,5	17,1	-0,4	0,5		
Proportion of the unemployed	65,8	68,0	68,3	68,2	68,2	0,0	2,4		
Those who have worked in the past 5 years									
Previous occupation	1 820	1 715	1 784	1 802	1 821	19	1	1,1	0,1
Manager	42	32	37	41	45	4	3	9,8	7,1
Professional	22	23	34	31	43	12	21	38,7	95,5
Technician	85	90	84	73	114	41	29	56,2	34,1
Clerk	231	214	213	205	222	17	-9	8,3	-3,9
Sales and services	262	262	264	297	275	-22	13	-7,4	5,0
Skilled agriculture	11	5	10	10	6	-4	-5	-40,0	-45,5
Craft and related trade	348	298	313	303	292	-11	-56	-3,6	-16,1
Plant and machine operator	138	133	143	123	155	32	17	26,0	12,3
Elementary	524	522	522	582	518	-64	-6	-11,0	-1,1
Domestic worker	157	136	164	136	150	14	-7	10,3	-4,5
Other									

For all values of 10 000 or lower, the sample size is too small for reliable estimates.
 Due to rounding, numbers do not necessarily add up to totals.

Table 4: Characteristics of the unemployed – South Africa (concluded)									
	Jul-Sep 2010	Oct-Dec 2010	Jan-Mar 2011	Apr-Jun 2011	Jul-Sep 2011	Qrt-to-qrt change	Year-on-year change	Qrt-to-qrt change	Year-on-year change
	Thousand	Thousand	Thousand	Thousand	Thousand	Thousand	Thousand	Per cent	Per cent
Previous industry	1 820	1 715	1 784	1 802	1 821	19	1	1,1	0,1
Agriculture	112	83	98	108	81	-27	-31	-25,0	-27,7
Mining	25	37	28	30	31	1	6	3,3	24,0
Manufacturing	269	250	249	242	264	22	-5	9,1	-1,9
Utilities	9	8	12	8	7	-1	-2	-12,5	-22,2
Construction	309	275	289	276	278	2	-31	0,7	-10,0
Trade	448	438	414	450	420	-30	-28	-6,7	-6,3
Transport	76	65	77	95	97	2	21	2,1	27,6
Finance	218	214	215	222	234	12	16	5,4	7,3
Community and social services	161	162	194	183	204	21	43	11,5	26,7
Private households	193	184	209	187	206	19	13	10,2	6,7
Other				1					

For all values of 10 000 or lower, the sample size is too small for reliable estimates.
 Due to rounding, numbers do not necessarily add up to totals.

Table 5: Characteristics of the not economically active – South Africa									
	Jul-Sep 2010	Oct-Dec 2010	Jan-Mar 2011	Apr-Jun 2011	Jul-Sep 2011	Qrt-to-qrt change	Year-on-year change	Qrt-to-qrt change	Year-on-year change
	Thousand	Thousand	Thousand	Thousand	Thousand	Thousand	Thousand	Per cent	Per cent
Not economically active	14 702	14 924	14 832	14 772	14 795	23	93	0,2	0,6
Student	6 096	6 251	6 083	6 182	6 184	2	88	0,0	1,4
Home-maker	2 897	2 929	2 882	2 833	2 842	9	-55	0,3	-1,9
Illness/disability	1 807	1 760	1 708	1 670	1 618	-52	-189	-3,1	-10,5
Too old/young to work	1 156	1 149	1 216	1 197	1 249	52	93	4,3	8,0
Discouraged work-seekers	2 033	2 150	2 223	2 207	2 204	-3	171	-0,1	8,4
Other	714	686	719	684	698	14	-16	2,0	-2,2
Inactivity rate by age (Both sexes)	45,8	46,4	45,9	45,5	45,4	-0,1	-0,4		
15–24 yrs	74,1	75,6	74,8	74,5	74,7	0,2	0,6		
25–54 yrs	28,2	28,4	27,9	27,7	27,5	-0,2	-0,7		
55–64 yrs	60,0	59,8	60,7	59,3	59,5	0,2	-0,5		
Inactivity rate by age (Women)	52,9	53,2	52,4	52,0	51,8	-0,2	-1,1		
15–24 yrs	76,8	77,6	76,2	76,1	77,2	1,1	0,4		
25–54 yrs	37,9	38,0	37,1	36,5	36,1	-0,4	-1,8		
55–64 yrs	68,7	68,8	69,9	69,6	67,9	-1,7	-0,8		
Inactivity rate by age (Men)	38,3	39,1	39,0	38,7	38,7	0,0	0,4		
15–24 yrs	71,4	73,5	73,4	72,9	72,2	-0,7	0,8		
25–54 yrs	17,7	18,0	17,9	18,2	18,1	-0,1	0,4		
55–64 yrs	49,6	49,0	49,7	47,0	49,5	2,5	-0,1		

Due to rounding, numbers do not necessarily add up to totals.

Table 6: Socio-demographic characteristics – South Africa									
	Jul-Sep 2010	Oct-Dec 2010	Jan-Mar 2011	Apr-Jun 2011	Jul-Sep 2011	Qrt-to-qrt change	Year-on-year change	Qrt-to-qrt change	Year-on-year change
	Thousand	Thousand	Thousand	Thousand	Thousand	Thousand	Thousand	Per cent	Per cent
Age group of the employed	12 975	13 132	13 118	13 125	13 318	193	343	1,5	2,6
15–24 yrs	1 295	1 271	1 304	1 318	1 297	-21	2	-1,6	0,2
25–34 yrs	4 365	4 379	4 333	4 314	4 417	103	52	2,4	1,2
35–44 yrs	3 707	3 806	3 847	3 800	3 847	47	140	1,2	3,8
45–54 yrs	2 501	2 545	2 519	2 529	2 596	67	95	2,6	3,8
55–64 yrs	1 106	1 130	1 116	1 164	1 162	-2	56	-0,2	5,1
Age group of the unemployed	4 396	4 137	4 364	4 538	4 442	-96	46	-2,1	1,0
15–24 yrs	1 364	1 240	1 289	1 309	1 319	10	-45	0,8	-3,3
25–34 yrs	1 791	1 738	1 868	1 933	1 851	-82	60	-4,2	3,4
35–44 yrs	801	758	780	861	857	-4	56	-0,5	7,0
45–54 yrs	354	324	356	364	341	-23	-13	-6,3	-3,7
55–64 yrs	87	76	71	72	75	3	-12	4,2	-13,8
Age group of the not economically active	14 702	14 924	14 832	14 772	14 795	23	93	0,2	0,6
15–24 yrs	7 596	7 762	7 698	7 682	7 711	29	115	0,4	1,5
25–34 yrs	2 415	2 487	2 437	2 425	2 439	14	24	0,6	1,0
35–44 yrs	1 504	1 494	1 477	1 490	1 493	3	-11	0,2	-0,7
45–54 yrs	1 397	1 387	1 386	1 372	1 331	-41	-66	-3,0	-4,7
55–64 yrs	1 790	1 795	1 834	1 803	1 821	18	31	1,0	1,7
Highest level of education of the employed	12 975	13 132	13 118	13 125	13 318	193	343	1,5	2,6
No schooling	387	377	337	331	360	29	-27	8,8	-7,0
Less than primary completed	1 101	1 056	1 063	1 052	1 151	99	50	9,4	4,5
Primary completed	626	626	587	607	590	-17	-36	-2,8	-5,8
Secondary not completed	4 304	4 333	4 416	4 313	4 455	142	151	3,3	3,5
Secondary completed	3 938	4 035	3 960	4 014	3 957	-57	19	-1,4	0,5
Tertiary	2 437	2 530	2 602	2 643	2 642	-1	205	0,0	8,4
Other	183	174	154	166	163	-3	-20	-1,8	-10,9

Due to rounding, numbers do not necessarily add up to totals.

Table 6: Socio-demographic characteristics – South Africa (continued)									
	Jul-Sep 2010	Oct-Dec 2010	Jan-Mar 2011	Apr-Jun 2011	Jul-Sep 2011	Qrt-to-qrt change	Year-on- year change	Qrt-to-qrt change	Year-on-year change
	Thousand	Thousand	Thousand	Thousand	Thousand	Thousand	Thousand	Per cent	Per cent
Highest level of education of the unemployed	4 396	4 137	4 364	4 538	4 442	-96	46	-2,1	1,0
No schooling	79	83	68	71	81	10	2	14,1	2,5
Less than primary completed	370	342	306	316	302	-14	-68	-4,4	-18,4
Primary completed	213	174	200	195	205	10	-8	5,1	-3,8
Secondary not completed	2 028	1 872	2 023	2 096	2 085	-11	57	-0,5	2,8
Secondary completed	1 424	1 403	1 504	1 580	1 476	-104	52	-6,6	3,7
Tertiary	248	234	241	256	260	4	12	1,6	4,8
Other	35	30	22	24	34	10	-1	41,7	-2,9
Highest level of education of the not economically active	14 702	14 924	14 832	14 772	14 793	21	91	0,1	0,6
No schooling	837	821	834	845	813	-32	-24	-3,8	-2,9
Less than primary completed	2 067	2 115	1 888	1 901	1 885	-16	-182	-0,8	-8,8
Primary completed	1 178	1 246	1 074	1 114	1 147	33	-31	3,0	-2,6
Secondary not completed	7 628	7 754	7 773	7 875	7 876	1	248	0,0	3,3
Secondary completed	2 440	2 450	2 710	2 493	2 526	33	86	1,3	3,5
Tertiary	424	412	431	435	420	-15	-4	-3,4	-0,9
Other	127	126	121	109	127	18	0	16,5	0,0
Current marital status of the employed	12 975	13 132	13 118	13 125	13 318	193	343	1,5	2,6
Married	5 461	5 552	5 470	5 475	5 629	154	168	2,8	3,1
Living together like husband and wife	1 482	1 469	1 516	1 502	1 486	-16	4	-1,1	0,3
Widow/widower	442	442	416	437	420	-17	-22	-3,9	-5,0
Divorced or separated	467	468	455	454	431	-23	-36	-5,1	-7,7
Never married	5 121	5 201	5 262	5 257	5 353	96	232	1,8	4,5
Current marital status of the unemployed	4 396	4 137	4 364	4 538	4 442	-96	46	-2,1	1,0
Married	733	684	717	736	727	-9	-6	-1,2	-0,8
Living together like husband and wife	416	431	412	447	449	2	33	0,4	7,9
Widow/widower	59	51	50	49	63	14	4	28,6	6,8
Divorced or separated	79	53	72	79	81	2	2	2,5	2,5
Never married	3 109	2 918	3 112	3 226	3 123	-103	14	-3,2	0,5

Due to rounding, numbers do not necessarily add up to totals.

Table 6: Socio-demographic characteristics – South Africa (concluded)									
	Jul-Sep 2010	Oct-Dec 2010	Jan-Mar 2011	Apr-Jun 2011	Jul-Sep 2011	Qrt-to-qrt change	Year-on- year change	Qrt-to-qrt change	Year-on-year change
	Thousand	Thousand	Thousand	Thousand	Thousand	Thousand	Thousand	Per cent	Per cent
Current marital status of the not economically active	14 702	14 924	14 832	14 772	14 795	23	93	0,2	0,6
Married	2 938	2 957	3 011	2 979	2 921	-58	-17	-1,9	-0,6
Living together like husband and wife	740	734	718	676	675	-1	-65	-0,1	-8,8
Widow/widower	631	646	673	662	652	-10	21	-1,5	3,3
Divorced or separated	227	218	229	231	237	6	10	2,6	4,4
Never married	10 164	10 370	10 201	10 224	10 309	85	145	0,8	1,4

Due to rounding, numbers do not necessarily add up to totals.

Table 7: Involvement in non-market activities and labour market status by province									
	Jul-Sep 2010	Oct-Dec 2010	Jan-Mar 2011	Apr-Jun 2011	Jul-Sep 2011	Qrt-to-qrt change	Year-on- year change	Qrt-to- qrt change	Year-on- year change
	Thousand	Thousand	Thousand	Thousand	Thousand	Thousand	Thousand	Per cent	Per cent
South Africa									
Subsistence farming	1 529	1 909	2 285	1 740	1 921	181	392	10,4	25,6
Fetching water or collecting wood/dung	4 539	4 283	3 998	4 130	4 642	512	103	12,4	2,3
Produce other goods for household use	220	166	182	169	457	288	237	.	.
Construction or major repairs to own or household	402	332	259	288	606	318	204	.	50,7
Hunting or fishing for household use	78	54	38	37	320	283	242	.	.
Involvement in at least one activity	5 402	5 331	5 382	5 155	6 254	1 099	852	21,3	15,8
Employed	1 070	1 067	1 103	1 051	1 515	464	445	44,1	41,6
Unemployed	665	613	602	642	759	117	94	18,2	14,1
Not economically active	3 667	3 651	3 677	3 462	3 980	518	313	15,0	8,5
Eastern Cape									
Subsistence farming	502	573	711	508	493	-15	-9	-3,0	-1,8
Fetching water or collecting wood/dung	1 164	1 030	982	933	1 062	129	-102	13,8	-8,8
Produce other goods for household use	5	12	4	7	59	52	54	.	.
Construction or major repairs to own or household	84	58	85	105	142	37	58	35,2	.
Hunting or fishing for household use	3	3	4	11	41	30	38	.	.
Involvement in at least one activity	1 352	1 289	1 357	1 210	1 334	124	-18	10,2	-1,3
Employed	217	208	187	174	215	41	-2	23,6	-0,9
Unemployed	128	118	137	136	132	-4	4	-2,9	3,1
Not economically active	1 007	963	1 033	900	987	87	-20	9,7	-2,0
Northern Cape									
Subsistence farming	10	9	6	4	12	8	2	.	20,0
Fetching water or collecting wood/dung	108	102	90	75	74	-1	-34	-1,3	-31,5
Produce other goods for household use	1	.	.	1	10	9	9	.	.
Construction or major repairs to own or household	2	1	.	1	8	7	6	.	.
Hunting or fishing for household use	1	4	.	.	9	9	8	.	.
Involvement in at least one activity	114	105	93	79	98	19	-16	24,1	-14,0
Employed	23	22	11	10	17	7	-6	.	-26,1
Unemployed	14	16	18	9	19	10	5	.	35,7
Not economically active	77	67	63	59	61	2	-16	3,4	-20,8

For all values of 10 000 or lower, the sample size is too small for reliable estimates.
 Due to rounding, numbers do not necessarily add up to totals.
 Western Cape is excluded because of the small sample size.

Table 7: Involvement in non-market activities and labour market status by province (continued)									
	Jul-Sep 2010	Oct-Dec 2010	Jan-Mar 2011	Apr-Jun 2011	Jul-Sep 2011	Qrt-to-qrt change	Year-on- year change	Qrt-to-qrt change	Year-on-year change
	Thousand	Thousand	Thousand	Thousand	Thousand	Thousand	Thousand	Per cent	Per cent
Free State									
Subsistence farming	84	118	106	114	85	-29	1	-25,4	1,2
Fetching water or collecting wood/dung	49	35	34	52	80	28	31	.	.
Produce other goods for household use	5	5	8	10	27	17	22	.	.
Construction or major repairs to own or household'	9	12	19	19	36	17	27	.	.
Hunting or fishing for household use	17	24	19	13	29	16	12	.	70,6
Involvement in at least one activity	133	156	155	174	192	18	59	10,3	44,4
Employed	51	62	69	71	74	3	23	4,2	45,1
Unemployed	19	23	28	27	34	7	15	25,9	.
Not economically active	62	71	57	77	84	7	22	9,1	35,5
KwaZulu-Natal									
Subsistence farming	515	749	853	631	685	54	170	8,6	33,0
Fetching water or collecting wood/dung	1 323	1 294	1 269	1 308	1 396	88	73	6,7	5,5
Produce other goods for household use	88	58	28	42	106	64	18	.	20,5
Construction or major repairs to own or household'	202	194	89	120	213	93	11	.	5,4
Hunting or fishing for household use	47	18	10	10	57	47	10	.	21,3
Involvement in at least one activity	1 520	1 608	1 684	1 604	1 831	227	311	14,2	20,5
Employed	318	332	378	367	459	92	141	25,1	44,3
Unemployed	146	171	141	168	167	-1	21	-0,6	14,4
Not economically active	1 056	1 106	1 164	1 068	1 206	138	150	12,9	14,2
North West									
Subsistence farming	81	75	83	89	106	17	25	19,1	30,9
Fetching water or collecting wood/dung	324	321	294	294	333	39	9	13,3	2,8
Produce other goods for household use	5	2	2	4	18	14	13	.	.
Construction or major repairs to own or household'	3	5	4	2	11	9	8	.	.
Hunting or fishing for household use	1	3	1	1	23	22	22	.	.
Involvement in at least one activity	368	350	333	337	425	88	57	26,1	15,5
Employed	72	52	50	53	85	32	13	.	18,1
Unemployed	73	76	60	74	73	-1		-1,4	0,0
Not economically active	223	222	223	210	266	56	43	26,7	19,3

For all values of 10 000 or lower, the sample size is too small for reliable estimates.
 Due to rounding, numbers do not necessarily add up to totals.
 Western Cape is excluded because of the small sample size.

Table 7: Involvement in non-market activities and labour market status by province (concluded)									
	Jul-Sep 2010	Oct-Dec 2010	Jan-Mar 2011	Apr-Jun 2011	Jul-Sep 2011	Qrt-to-qrt change	Year-on- year change	Qrt-to-qrt change	Year-on- year change
	Thousand	Thousand	Thousand	Thousand	Thousand	Thousand	Thousand	Per cent	Per cent
Gauteng									
Subsistence farming	47	28	21	2	115	113	68	.	.
Fetching water or collecting wood/dung	59	27	22	19	126	107	67	.	.
Produce other goods for household use	46	42	75	59	105	46	59	.	.
Construction or major repairs to own or household'	53	28	35	20	96	76	43	.	.
Hunting or fishing for household use	4		1	.	74	.	70	.	.
Involvement in at least one activity	176	110	142	97	435	338	259	.	.
Employed	88	67	89	65	220	155	132	.	.
Unemployed	34	10	17	12	91	79	57	.	.
Not economically active	53	33	36	21	124	103	71	.	.
Mpumalanga									
Subsistence farming	118	172	191	157	161	4	43	2,5	36,4
Fetching water or collecting wood/dung	279	296	238	290	325	35	46	12,1	16,5
Produce other goods for household use	52	44	57	42	57	15	5	35,7	9,6
Construction or major repairs to own or household'	25	24	14	10	33	23	8	.	.
Hunting or fishing for household use		1	1	1	15	14	15	.	.
Involvement in at least one activity	404	439	396	392	473	81	69	20,7	17,1
Employed	70	81	84	86	116	30	46	34,9	.
Unemployed	108	120	119	110	114	4	6	3,6	5,6
Not economically active	227	238	193	196	243	47	16	24,0	7,0
Limpopo									
Subsistence farming	147	160	283	199	212	13	65	6,5	44,2
Fetching water or collecting wood/dung	1 168	1 158	1 061	1 141	1 181	40	13	3,5	1,1
Produce other goods for household use	15	3	6	2	42	40	27	.	.
Construction or major repairs to own or household'	19	8	9	10	48	38	29	.	.
Hunting or fishing for household use	3		1	1	44	43	41	.	.
Involvement in at least one activity	1 244	1 226	1 178	1 207	1 300	93	56	7,7	4,5
Employed	194	216	206	194	247	53	53	27,3	27,3
Unemployed	120	74	76	105	99	-6	-21	-5,7	-17,5
Not economically active	930	936	895	908	954	46	24	5,1	2,6

For all values of 10 000 or lower, the sample size is too small for reliable estimates.
 Due to rounding, numbers do not necessarily add up to totals.
 Western Cape is excluded because of the small sample size.

Appendix 2A: Sampling variability for labour force characteristics by sex						
	Apr-Jun 2011 CV	Jul-Sep 2011 CV	Estimate	Lower 95%	Upper 95%	P-value
Both sexes						
Population 15-64 yrs						
Labour Force	0,6	0,5	98	-72	267	0,26
Employed	0,7	0,7	193	23	363	0,03
Formal sector (Non-agricultural	1,0	1,0	238	73	405	0,01
Informal sector (Non-agricultural	2,3	2,4	-53	-158	51	0,32
Agriculture	6,0	6,2	26	-37	90	0,42
Private households	2,9	3,1	-19	-78	41	0,55
Unemployed	1,9	1,8	-96	-252	61	0,23
Not economically active	0,7	0,6	23	-147	192	0,80
Discouraged work-seekers	2,7	3,1	-3	-132	126	0,96
Other(not economically active	0,7	0,6	25	-134	185	0,75
Rates (%)						
Unemployment rate	1,7	1,6	-0,7	-1,5	0,1	0,10
Employed / population ratio (Absorption	0,7	0,7	0,4	-0,1	1,0	0,10
Labour force participation rate	0,6	0,5	0,1	-0,4	0,6	0,71
Women						
Population 15-64 yrs						
Labour Force	0,8	0,8	46	-73	164	0,45
Employed	1,0	1,0	90	-12	191	0,08
Formal sector (Non-agricultural	1,4	1,3	100	13	188	0,03
Informal sector (Non-agricultural	3,2	3,3	-21	-77	34	0,45
Agriculture	8,3	8,5	14	-19	46	0,40
Private households	3,1	3,3	-3	-55	49	0,91
Unemployed	2,3	2,2	-44	-150	61	0,41
Not economically active	0,7	0,7	6	-112	125	0,92
Discouraged work-seekers	3,2	3,4	28	-52	108	0,49
Other(not economically active	0,9	0,8	-22	-143	100	0,73
Rates (%)						
Unemployment rate	2,0	2,0	-0,7	-1,8	0,4	0,21
Employed / population ratio (Absorption	1,0	1,0	0,5	-0,2	1,0	0,17
Labour force participation rate	0,8	0,8	0,2	-0,6	0,8	0,73

Appendix 2A: Sampling variability for labour force characteristics by sex (concluded)						
	Apr-Jun 2011 CV	Jul-Sep 2011 CV	Estimate	Lower 95%	Upper 95%	P-value
Men						
Population 15-64 yrs						
Labour Force	0,6	0,6	52	-54	158	0,34
Employed	0,8	0,9	103	-27	233	0,12
Formal sector (Non-agricultural)	1,2	1,2	138	5	271	0,04
Informal sector (Non-agricultural)	2,9	3,2	-32	-115	51	0,45
Agriculture	6,3	6,7	12	-32	56	0,58
Private households	5,8	6,3	-15	-45	14	0,31
Unemployed	2,3	2,2	-51	-164	61	0,37
Not economically active	1,0	1,0	16	-90	122	0,77
Discouraged work-seekers	3,8	4,3	-32	-111	48	0,44
Other(not economically active)	1,0	1,0	47	-46	140	0,32
Rates (%)						
Unemployment rate	2,1	2,2	-0,7	-1,8	0,5	0,25
Employed / population ratio (Absorption)	0,8	0,9	0,4	-0,4	1,3	0,28
Labour force participation rate	0,6	0,6	0,0	-0,6	0,7	0,85

Appendix 2.1A: Sampling variability for labour force characteristics by population group						
	Apr-Jun 2011 CV	Jul-Sep 2011 CV	Estimate	Lower 95%	Upper 95%	P-value
South Africa						
Population 15-64 yrs						
Labour Force	0,6	0,5	98	-72	267	0,26
Employed	0,7	0,7	193	23	363	0,03
Unemployed	1,9	1,8	-96	-252	61	0,23
Not economically active	0,7	0,6	23	-147	192	0,80
Rates (%)						
Unemployment rate	1,7	1,6	-0,7	-1,5	0,1	0,10
Employed / population ratio (Absorption)	0,7	0,7	0,4	-0,1	1,0	0,10
Labour force participation rate	0,6	0,5	0,1	-0,4	0,6	0,71
Black/African						
Population 15-64 yrs						
Labour Force	0,7	0,7	-4	-168	161	0,97
Employed	1,0	0,9	146	-18	309	0,08
Unemployed	2,1	2,0	-149	-302	4	0,06
Not economically active	0,8	0,7	118	-45	283	0,16
Rates (%)						
Unemployment rate	1,8	1,8	-1,1	-2,2	-0,1	0,03
Employed / population ratio (Absorption)	1,0	0,9	0,4	-0,2	1,1	0,22
Labour force participation rate	0,7	0,7	-0,3	-0,9	0,4	0,45
Coloured						
Population 15-64 yrs						
Labour Force	1,4	1,0	135	86	185	0,00
Employed	1,7	1,5	93	44	140	0,00
Unemployed	5,7	5,2	43	-7	93	0,09
Not economically active	2,0	1,8	-127	-176	-77	0,00
Rates (%)						
Unemployment rate	5,1	4,7	0,5	-1,8	3,0	0,62
Employed / population ratio (Absorption)	1,7	1,5	2,9	1,3	4,5	0,00
Labour force participation rate	1,4	1,0	4,4	2,6	5,9	0,00

Appendix 2.1A: Sampling variability for labour force characteristics by population group (concluded)						
	Apr-Jun 2011 CV	Jul-Sep 2011 CV	Estimate	Lower 95%	Upper 95%	P-value
Indian/Asian						
Population 15-64 yrs						
Labour Force	1,9	2,8	-29	-58	1	0,06
Employed	2,3	3,6	-26	-56	4	0,09
Unemployed	13,6	18,1	-3	-28	23	0,84
Not economically active	2,9	3,7	33	3	62	0,03
Rates (%)						
Unemployment rate	13,2	17,9	0,0	-4,5	4,6	0,97
Employed / population ratio (Absorption	2,3	3,6	-3,1	-6,3	0,3	0,07
Labour force participation rate	1,9	2,8	-3,4	-6,5	-0,2	0,04
White						
Population 15-64 yrs						
Labour Force	1,3	1,1	-5	-49	38	0,80
Employed	1,4	1,3	-19	-59	22	0,36
Unemployed	13,2	12,1	13	-14	40	0,34
Not economically active	2,7	2,4	-3	-46	41	0,90
Rates (%)						
Unemployment rate	13,0	12,0	0,6	-0,6	1,9	0,31
Employed / population ratio (Absorption	1,4	1,3	-0,4	-1,8	0,9	0,52
Labour force participation rate	1,3	1,1	0,0	-1,4	1,4	1,00

Appendix 2.2A: Sampling variability for labour force characteristics by province						
	Apr-Jun 2011 CV	Jul-Sep 2011 CV	Estimate	Lower 95%	Upper 95%	P-value
South Africa						
Population 15-64 yrs						
Labour Force	0,6	0,5	98	-72	267	0,26
Employed	0,7	0,7	193	23	363	0,03
Unemployed	1,9	1,8	-96	-252	61	0,23
Not economically active	0,7	0,6	23	-147	192	0,80
Discouraged work-seekers	2,7	3,1	-3	-132	126	0,96
Other	0,7	0,6	25	-134	185	0,75
Rates (%)						
Unemployment rate	1,7	1,6	-0,7	-1,5	0,1	0,10
Employed / population ratio (Absorption	0,7	0,7	0,4	-0,1	1,0	0,10
Labour force participation rate	0,6	0,5	0,1	-0,4	0,6	0,71
Western Cape						
Population 15-64 yrs						
Labour Force	1,0	0,9	47	4	90	0,03
Employed	1,6	1,5	1	-39	41	0,96
Unemployed	4,8	4,5	46	3	90	0,04
Not economically active	2,0	2,0	-34	-77	9	0,13
Discouraged work-seekers	21,6	29,0	-4	-19	11	0,60
Other	2,0	2,2	-30	-72	13	0,17
Rates (%)						
Unemployment rate	4,7	4,3	1,5	-0,1	3,2	0,07
Employed / population ratio (Absorption	1,6	1,5	-0,2	-1,4	1,0	0,77
Labour force participation rate	1,0	0,9	1,1	-0,2	2,4	0,08

Appendix 2.2A: Sampling variability for labour force characteristics by province (continued)						
	Apr-Jun 2011 CV	Jul-Sep 2011 CV	Estimate	Lower 95%	Upper 95%	P-value
Eastern Cape						
Population 15-64 yrs						
Labour Force	2,5	2,5	-59	-151	32	0,20
Employed	2,6	2,4	-11	-84	61	0,76
Unemployed	6,6	7,1	-48	-111	15	0,13
Not economically active	2,0	1,8	72	-20	163	0,12
Discouraged work-seekers	7,7	10,0	6	-52	63	0,85
Other	2,0	1,9	66	-9	141	0,08
Rates (%)						
Unemployment rate	5,3	5,6	-1,8	-4,6	1,1	0,23
Employed / population ratio (Absorption	2,6	2,4	-0,3	-2,1	1,4	0,68
Labour force participation rate	2,5	2,5	-1,6	-3,7	0,6	0,17
Northern Cape						
Population 15-64 yrs						
Labour Force	3,2	2,2	16	-4	35	0,12
Employed	3,4	2,4	14	-6	34	0,16
Unemployed	6,8	7,8	2	-13	15	0,85
Not economically active	3,4	2,5	-14	-33	6	0,18
Discouraged work-seekers	15,2	10,1	4	-8	16	0,51
Other	3,4	2,8	-18	-34	-1	0,04
Rates (%)						
Unemployment rate	5,3	6,5	-0,6	-4,3	2,6	0,64
Employed / population ratio (Absorption	3,4	2,4	1,9	-0,9	4,7	0,19
Labour force participation rate	3,2	2,2	2,1	-0,7	4,8	0,15

Appendix 2.2A: Sampling variability for labour force characteristics by province (continued)						
	Apr-Jun 2011 CV	Jul-Sep 2011 CV	Estimate	Lower 95%	Upper 95%	P-value
Free State						
Population 15-64 yrs						
Labour Force	2,0	2,6	35	-16	85	0,18
Employed	2,1	3,9	54	-10	119	0,10
Unemployed	5,7	6,5	-20	-45	5	0,12
Not economically active	2,7	3,8	-31	-81	19	0,23
Discouraged work-seekers	11,4	15,1	10	-13	34	0,40
Other	2,7	3,4	-41	-84	2	0,06
Rates (%)						
Unemployment rate	4,6	6,7	-2,7	-5,6	0,3	0,07
Employed / population ratio (Absorption	2,1	3,9	2,8	-0,6	6,3	0,11
Labour force participation rate	2,0	2,6	1,7	-1,0	4,4	0,21
KwaZulu Natal						
Population 15-64 yrs						
Labour Force	1,9	1,4	-34	-114	46	0,40
Employed	2,0	1,5	10	-78	99	0,82
Unemployed	6,4	6,2	-45	-111	22	0,19
Not economically active	1,6	1,2	61	-18	141	0,13
Discouraged work-seekers	4,3	5,3	-55	-118	6	0,08
Other	2,0	1,6	117	34	200	0,01
Rates (%)						
Unemployment rate	5,5	5,5	-1,2	-3,3	0,9	0,25
Employed / population ratio (Absorption	2,0	1,5	0,0	-1,3	1,3	1,00
Labour force participation rate	1,9	1,4	-0,7	-1,9	0,5	0,25

Appendix 2.2A: Sampling variability for labour force characteristics by province (continued)						
	Apr-Jun 2011 CV	Jul-Sep 2011 CV	Estimate	Lower 95%	Upper 95%	P-value
North West						
Population 15-64 yrs						
Labour Force	3,1	2,9	1	-44	47	0,95
Employed	3,6	3,2	-11	-52	31	0,62
Unemployed	6,3	6,1	12	-22	45	0,48
Not economically active	2,7	2,5	5	-41	50	0,84
Discouraged work-seekers	8,5	7,3	8	-26	42	0,66
Other	2,8	3,0	-4	-47	40	0,89
Rates (%)						
Unemployment rate	5,2	4,8	1,3	-1,9	4,3	0,44
Employed / population ratio (Absorption	3,6	3,2	-0,6	-2,6	1,4	0,55
Labour force participation rate	3,1	2,9	-0,1	-2,3	2,2	0,95
Gauteng						
Population 15-64 yrs						
Labour Force	0,9	1,0	-6	-98	85	0,90
Employed	1,3	1,3	18	-81	119	0,71
Unemployed	2,9	3,1	-25	-119	70	0,61
Not economically active	2,2	2,4	35	-57	126	0,46
Discouraged work-seekers	11,9	14,1	4	-66	74	0,91
Other	2,4	2,1	30	-63	123	0,52
Rates (%)						
Unemployment rate	2,7	2,7	-0,4	-2,0	1,2	0,60
Employed / population ratio (Absorption	1,3	1,3	0,0	-1,2	1,3	0,93
Labour force participation rate	0,9	1,0	-0,4	-1,5	0,8	0,57

Appendix 2.2A: Sampling variability for labour force characteristics by province (concluded)						
	Apr-Jun 2011 CV	Jul-Sep 2011 CV	Estimate	Lower 95%	Upper 95%	P-value
Mpumalanga						
Population 15-64 yrs						
Labour Force	2,1	1,7	14	-38	65	0,61
Employed	2,9	2,3	27	-27	80	0,33
Unemployed	7,8	5,5	-13	-57	31	0,57
Not economically active	2,5	2,0	-4	-55	48	0,90
Discouraged work-seekers	7,3	8,4	28	-8	64	0,13
Other	3,0	2,6	-31	-76	13	0,17
Rates (%)						
Unemployment rate	6,8	4,9	-1,3	-4,5	1,9	0,42
Employed / population ratio (Absorption	2,9	2,3	1,0	-1,3	3,3	0,41
Labour force participation rate	2,1	1,7	0,4	-1,9	2,6	0,77
 Limpopo						
Population 15-64 yrs						
Labour Force	2,8	2,8	85	35	135	0,00
Employed	3,8	3,4	90	33	147	0,00
Unemployed	7,6	7,2	-5	-43	33	0,80
Not economically active	1,6	1,7	-69	-118	-19	0,01
Discouraged work-seekers	5,5	4,2	-3	-39	33	0,88
Other	1,7	2,0	-65	-114	-18	0,01
Rates (%)						
Unemployment rate	7,6	6,9	-1,8	-4,9	1,3	0,26
Employed / population ratio (Absorption	3,8	3,4	2,5	0,8	4,2	0,00
Labour force participation rate	2,8	2,8	2,3	0,9	3,8	0,00

Appendix 3.1A: Sampling variability for the employed by industry and sex						
	Apr-Jun 2011 CV	Jul-Sep 2011 CV	Estimate	Lower 95%	Upper 95%	P-value
Both sexes	0,7	0,7	193	23	363	0,03
Agriculture	6,0	6,2	26	-37	90	0,42
Mining	9,3	7,5	42	9	74	0,01
Manufacturing	3,1	3,1	2	-99	101	0,98
Utilities	11,0	11,8	-20	-39	0	0,05
Construction	3,8	5,1	43	-69	155	0,45
Trade	2,1	2,1	68	-33	170	0,19
Transport	4,1	3,7	-21	-73	32	0,44
Finance	3,1	2,3	64	-22	150	0,15
Community and social services	2,2	2,2	5	-92	103	0,91
Private households	2,9	3,1	-19	-78	41	0,55
Other						
Women	1,0	1,0	90	-12	191	0,08
Agriculture	8,3	8,5	14	-19	46	0,40
Mining	16,1	19,6	-1	-13	11	0,89
Manufacturing	5,0	4,7	-12	-60	37	0,64
Utilities	21,2	25,7	-9	-19	0	0,06
Construction	8,5	7,5	-7	-24	10	0,44
Trade	2,7	2,6	38	-27	102	0,25
Transport	8,5	8,9	-8	-34	18	0,54
Finance	3,9	3,5	34	-14	83	0,17
Community and social services	2,5	2,4	44	-22	110	0,19
Private households	3,1	3,3	-3	-55	49	0,91
Other						
Men	0,8	0,9	103	-27	233	0,12
Agriculture	6,3	6,7	12	-32	56	0,58
Mining	9,8	7,8	43	11	74	0,01
Manufacturing	3,4	3,3	13	-63	89	0,74
Utilities	12,4	12,2	-11	-25	4	0,17
Construction	3,9	5,6	50	-59	159	0,37
Trade	2,8	3,2	31	-56	118	0,48
Transport	4,6	4,0	-13	-61	36	0,61
Finance	3,9	3,2	30	-32	92	0,34
Community and social services	2,9	3,1	-39	-102	25	0,24
Private households	5,8	6,3	-15	-45	14	0,31
Other						

Appendix 3.4A: Sampling variability for the employed by province and sector						
	Apr-Jun 2011 CV	Jul-Sep 2011 CV	Estimate	Lower 95%	Upper 95%	P-value
South Africa	0,7	0,7	193	23	363	0,03
Formal sector (Non-agricultural)	1,0	1,0	238	73	405	0,01
Informal sector (Non-agricultural)	2,3	2,4	-53	-158	51	0,32
Agriculture	6,0	6,2	26	-37	90	0,42
Private households	2,9	3,1	-19	-78	41	0,55
Western Cape	1,6	1,5	1	-39	41	0,96
Formal sector (Non-agricultural)	2,0	2,2	-27	-69	15	0,21
Informal sector (Non-agricultural)	8,1	8,0	10	-17	36	0,49
Agriculture	12,3	11,7	13	-4	31	0,14
Private households	9,4	10,6	6	-18	28	0,65
Eastern Cape	2,6	2,4	-11	-84	61	0,76
Formal sector (Non-agricultural)	3,7	3,0	5	-58	66	0,89
Informal sector (Non-agricultural)	6,1	7,1	-30	-66	5	0,10
Agriculture	25,4	24,1	6	-9	20	0,44
Private households	10,2	11,6	9	-11	29	0,38
Northern Cape	3,4	2,4	14	-6	34	0,16
Formal sector (Non-agricultural)	5,1	3,8	8	-11	27	0,42
Informal sector (Non-agricultural)	11,3	10,7	6	-2	13	0,14
Agriculture	9,2	11,7	0	-10	11	0,94
Private households	19,0	17,3	1	-4	4	0,87
Free State	2,1	3,9	54	-10	119	0,10
Formal sector (Non-agricultural)	3,1	6,9	64	-11	139	0,09
Informal sector (Non-agricultural)	7,3	7,0	-3	-26	20	0,80
Agriculture	11,6	11,6	-5	-21	11	0,51
Private households	7,3	8,2	-1	-15	12	0,86
KwaZulu Natal	2,0	1,5	10	-78	99	0,82
Formal sector (Non-agricultural)	2,6	2,5	0	-81	82	0,99
Informal sector (Non-agricultural)	5,2	5,8	18	-41	75	0,56
Agriculture	21,9	17,8	-2	-25	20	0,86
Private households	7,0	7,8	-6	-35	24	0,71

Appendix 3.4A: Sampling variability for the employed by province and sector (concluded)						
	Apr-Jun 2011 CV	Jul-Sep 2011 CV	Estimate	Lower 95%	Upper 95%	P-value
North West	3,6	3,2	-11	-52	31	0,62
Formal sector (Non-agricultural)	5,2	4,5	2	-39	44	0,91
Informal sector (Non-agricultural)	7,4	7,5	-2	-18	13	0,75
Agriculture	24,3	21,8	-1	-9	6	0,69
Private households	10,4	13,2	-8	-21	3	0,15
Gauteng	1,3	1,3	18	-81	119	0,71
Formal sector (Non-agricultural)	1,8	1,6	73	-28	175	0,16
Informal sector (Non-agricultural)	5,5	5,3	-37	-98	25	0,25
Agriculture	31,1	22,5	5	-13	24	0,58
Private households	6,0	6,2	-24	-61	14	0,22
Mpumalanga	2,9	2,3	27	-27	80	0,33
Formal sector (Non-agricultural)	3,7	4,0	44	-4	91	0,07
Informal sector (Non-agricultural)	6,0	6,2	-18	-38	3	0,09
Agriculture	14,7	13,5	-3	-20	15	0,77
Private households	7,5	7,1	3	-8	14	0,59
Limpopo	3,8	3,4	90	33	147	0,00
Formal sector (Non-agricultural)	5,2	4,1	70	31	108	0,00
Informal sector (Non-agricultural)	5,7	4,9	4	-21	30	0,75
Agriculture	9,6	25,0	13	-31	57	0,56
Private households	11,0	10,8	3	-10	16	0,64

Appendix 3.5A: Sampling variability for the employed by sex and occupation						
	Apr-Jun 2011 CV	Jul-Sep 2011 CV	Estimate	Lower 95%	Upper 95%	P-value
Both sexes	0,7	0,7	193	23	363	0,03
Manager	3,4	3,7	6	-67	78	0,88
Professional	4,4	4,2	1	-64	67	0,97
Technician	2,5	2,5	-29	-100	40	0,40
Clerk	2,8	2,5	68	-11	147	0,09
Sales and services	2,7	2,3	31	-67	128	0,54
Skilled agriculture	13,2	12,4	-10	-29	10	0,32
Craft and related trade	2,9	3,6	79	-34	193	0,17
Plant and machine operator	3,4	3,1	-24	-94	47	0,51
Elementary	2,2	2,1	70	-44	183	0,23
Domestic worker	3,1	3,3	2	-52	55	0,96
Other						
Women	1,0	1,0	90	-12	191	0,08
Manager	5,8	6,0	-3	-48	41	0,89
Professional	6,4	5,0	22	-20	65	0,30
Technician	3,5	3,3	-27	-76	23	0,30
Clerk	3,0	3,0	47	-11	105	0,11
Sales and services	3,3	2,9	32	-20	86	0,23
Skilled agriculture	20,9	22,5	2	-9	11	0,80
Craft and related trade	7,9	7,0	-8	-33	17	0,52
Plant and machine operator	8,4	8,7	0	-28	27	0,99
Elementary	3,0	2,9	22	-41	85	0,50
Domestic worker	3,1	3,3	2	-49	55	0,92
Other						
Men	0,8	0,9	103	-27	233	0,12
Manager	3,9	3,9	9	-39	57	0,71
Professional	5,3	5,8	-21	-68	26	0,38
Technician	3,6	4,1	-4	-56	49	0,90
Clerk	5,2	4,3	21	-25	68	0,37
Sales and services	3,6	3,2	-2	-72	68	0,96
Skilled agriculture	13,5	14,3	-11	-26	4	0,16
Craft and related trade	3,1	4,0	88	-23	199	0,12
Plant and machine operator	3,6	3,1	-24	-90	43	0,49
Elementary	2,7	2,7	48	-48	142	0,33
Domestic worker	18,8	18,7	-2	-18	15	0,87
Other						

Appendix 2B: Sampling variability for labour force characteristics by sex						
	Jul-Sep 2010 CV	Jul-Sep 2011 CV	Estimate	Lower 95%	Upper 95%	P-value
Both sexes						
Population 15-64 yrs						
Labour Force	0,6	0,5	390	150	628	0,00
Employed	0,7	0,7	343	113	573	0,00
Formal sector (Non-agricultural)	0,9	1,0	393	167	619	0,00
Informal sector (Non-agricultural)	2,2	2,4	-12	-140	114	0,84
Agriculture	4,9	6,2	-16	-91	58	0,67
Private households	3,7	3,1	-21	-121	78	0,68
Unemployed	2,2	1,8	46	-155	246	0,65
Not economically active	0,7	0,6	93	-147	332	0,45
Discouraged work-seekers	3,1	3,1	171	10	331	0,04
Other(not economically active)	0,7	0,6	-78	-278	122	0,44
Rates (%)						
Unemployment rate	1,9	1,6	-0,3	-1,0	0,0	0,57
Employed / population ratio (Absorption)	0,7	0,7	0,4	-1,0	0,0	0,21
Labour force participation rate	0,6	0,5	0,4	-1,0	0,0	0,30
Women						
Population 15-64 yrs						
Labour Force	0,9	0,8	280	112	447	0,00
Employed	1,0	1,0	206	60	351	0,01
Formal sector (Non-agricultural)	1,4	1,3	233	106	360	0,00
Informal sector (Non-agricultural)	2,9	3,3	-11	-90	66	0,78
Agriculture	7,2	8,5	3	-35	39	0,89
Private households	3,3	3,3	-19	-95	56	0,62
Unemployed	2,8	2,2	74	-71	218	0,32
Not economically active	0,8	0,7	-69	-237	98	0,42
Discouraged work-seekers	3,6	3,4	84	-20	189	0,11
Other(not economically active)	0,9	0,8	-154	-311	2	0,05
Rates (%)						
Unemployment rate	2,4	2,0	0,0	-1,0	0,0	0,94
Employed / population ratio (Absorption)	1,0	1,0	0,8	-1,0	0,0	0,07
Labour force participation rate	0,9	0,8	1,1	0,0	0,0	0,04

Appendix 2B: Sampling variability for labour force characteristics by sex (Concluded)						
	Jul-Sep 2010 CV	Jul-Sep 2011 CV	Estimate	Lower 95%	Upper 95%	P-value
Men						
Population 15-64 yrs						
Labour Force	0,6	0,6	110	-41	260	0,15
Employed	0,8	0,9	138	-33	308	0,11
Formal sector (Non-agricultural)	1,1	1,2	160	-16	335	0,07
Informal sector (Non-agricultural)	3,0	3,2	-1	-111	107	0,98
Agriculture	5,7	6,7	-19	-76	38	0,52
Private households	8,5	6,3	-2	-48	43	0,93
Unemployed	2,5	2,2	-28	-156	99	0,67
Not economically active	1,0	1,0	162	11	312	0,04
Discouraged work-seekers	3,9	4,3	86	-9	181	0,08
Other(not economically active)	1,0	1,0	76	-54	205	0,25
Rates (%)						
Unemployment rate	2,3	2,2	-0,6	-1,0	0,0	0,40
Employed / population ratio (Absorption)	0,8	0,9	0,0	-1,0	0,0	0,92
Labour force participation rate	0,6	0,6	-0,4	-1,0	0,0	0,45

Appendix 2.1B: Sampling variability for labour force characteristics by population group						
	Jul-Sep 2010 CV	Jul-Sep 2011 CV	Estimate	Lower 95%	Upper 95%	P-value
South Africa						
Population 15-64 yrs						
Labour Force	0,6	0,5	390	150	628	0,00
Employed	0,7	0,7	343	113	573	0,00
Unemployed	2,2	1,8	46	-155	246	0,65
Not economically active	0,7	0,6	93	-147	332	0,45
Rates (%)						
Unemployment rate	1,9	1,6	-0,3	-1,0	0,0	0,57
Employed / population ratio (Absorption)	0,7	0,7	0,4	-1,0	0,0	0,21
Labour force participation rate	0,6	0,5	0,4	-1,0	0,0	0,30
Black/African						
Population 15-64 yrs						
Labour Force	0,8	0,7	377	154	599	0,00
Employed	0,9	0,9	386	179	592	0,00
Unemployed	2,4	2,0	-9	-202	184	0,93
Not economically active	0,8	0,7	86	-137	308	0,45
Rates (%)						
Unemployment rate	2,0	1,8	-0,9	-1,0	0,0	0,17
Employed / population ratio (Absorption)	0,9	0,9	0,8	0,0	0,0	0,04
Labour force participation rate	0,8	0,7	0,5	-1,0	0,0	0,22
Coloured						
Population 15-64 yrs						
Labour Force	1,1	1,0	40	-13	93	0,14
Employed	1,8	1,5	5	-60	68	0,89
Unemployed	5,2	5,2	36	-22	92	0,22
Not economically active	2,0	1,8	-5	-58	47	0,85
Rates (%)						
Unemployment rate	5,1	4,7	1,3	-1,0	0,0	0,34
Employed / population ratio (Absorption)	1,8	1,5	-0,4	-1,0	0,0	0,69
Labour force participation rate	1,1	1,0	0,7	-1,0	0,0	0,51

Appendix 2.1B: Sampling variability for labour force characteristics by population group (Concluded)						
	Jul-Sep 2010 CV	Jul-Sep 2011 CV	Estimate	Lower 95%	Upper 95%	P-value
Indian/Asian						
Population 15-64 yrs						
Labour Force	1,5	2,8	-40	-71	-8	0,02
Employed	2,0	3,6	-47	-80	-15	0,00
Unemployed	11,7	18,1	8	-15	30	0,49
Not economically active	2,5	3,7	55	23	86	0,00
Rates (%)						
Unemployment rate	11,8	17,9	2,2	-1,0	0,0	0,30
Employed / population ratio (Absorption	2,0	3,6	-6,1	-1,0	-1,0	0,00
Labour force participation rate	1,5	2,8	-5,2	-1,0	-1,0	0,00
White						
Population 15-64 yrs						
Labour Force	1,5	1,1	12	-55	77	0,73
Employed	1,5	1,3	1	-74	74	0,98
Unemployed	12,5	12,1	11	-27	48	0,58
Not economically active	3,1	2,4	-44	-110	22	0,20
Rates (%)						
Unemployment rate	12,1	12,0	0,5	-1,0	0,0	0,60
Employed / population ratio (Absorption	1,5	1,3	0,7	-1,0	0,0	0,57
Labour force participation rate	1,5	1,1	1,1	-1,0	0,0	0,33

Appendix 2.2B: Sampling variability for labour force characteristics by province						
	Jul-Sep 2010 CV	Jul-Sep 2011 CV	Estimate	Lower 95%	Upper 95%	P-value
South Africa						
Population 15-64 yrs						
Labour Force	0,6	0,5	390	150	628	0,00
Employed	0,7	0,7	343	113	573	0,00
Unemployed	2,2	1,8	46	-155	246	0,65
Not economically active	0,7	0,6	93	-147	332	0,45
Discouraged work-seekers	3,1	3,1	171	10	331	0,04
Other	0,7	0,6	-78	-278	122	0,44
Rates (%)						
Unemployment rate	1,9	1,6	-0,3	-1,0	0,0	0,57
Employed / population ratio (Absorption)	0,7	0,7	0,4	-1,0	0,0	0,21
Labour force participation rate	0,6	0,5	0,4	-1,0	0,0	0,30
Western Cape						
Population 15-64 yrs						
Labour Force	1,3	0,9	75	1	148	0,05
Employed	1,9	1,5	52	-28	130	0,20
Unemployed	5,4	4,5	23	-39	85	0,46
Not economically active	2,7	2,0	-22	-95	52	0,57
Discouraged work-seekers	23,9	29,0	-8	-27	10	0,42
Other	2,7	2,2	-14	-87	58	0,71
Rates (%)						
Unemployment rate	5,1	4,3	0,2	-1,0	0,0	0,84
Employed / population ratio (Absorption)	1,9	1,5	0,7	-1,0	0,0	0,56
Labour force participation rate	1,3	0,9	1,1	-1,0	0,0	0,30

Appendix 2.2B: Sampling variability for labour force characteristics by province (Continued)						
	Jul-Sep 2010 CV	Jul-Sep 2011 CV	Estimate	Lower 95%	Upper 95%	P-value
Eastern Cape						
Population 15-64 yrs						
Labour Force	3,1	2,5	-12	-149	123	0,86
Employed	2,7	2,4	-8	-85	67	0,82
Unemployed	7,3	7,1	-4	-100	91	0,94
Not economically active	2,3	1,8	62	-75	197	0,38
Discouraged work-seekers	6,1	10,0	44	-39	125	0,30
Other	2,5	1,9	18	-96	130	0,76
Rates (%)						
Unemployment rate	5,3	5,6	-0,1	-1,0	0,0	0,99
Employed / population ratio (Absorption	2,7	2,4	-0,5	-1,0	0,0	0,53
Labour force participation rate	3,1	2,5	-0,8	-1,0	0,0	0,63
Northern Cape						
Population 15-64 yrs						
Labour Force	2,6	2,2	15	-12	41	0,27
Employed	3,7	2,4	2	-25	28	0,88
Unemployed	6,7	7,8	13	-11	35	0,27
Not economically active	2,8	2,5	-7	-34	19	0,61
Discouraged work-seekers	15,4	10,1	-3	-18	10	0,64
Other	3,0	2,8	-4	-28	20	0,77
Rates (%)						
Unemployment rate	6,5	6,5	2,4	-1,0	0,0	0,40
Employed / population ratio (Absorption	3,7	2,4	-0,1	-1,0	0,0	0,94
Labour force participation rate	2,6	2,2	1,5	-1,0	0,0	0,43

Appendix 2.2B: Sampling variability for labour force characteristics by province (Continued)						
	Jul-Sep 2010 CV	Jul-Sep 2011 CV	Estimate	Lower 95%	Upper 95%	P-value
Free State						
Population 15-64 yrs						
Labour Force	1,7	2,6	18	-43	78	0,56
Employed	2,2	3,9	58	-17	132	0,13
Unemployed	4,6	6,5	-39	-73	-8	0,02
Not economically active	2,4	3,8	-4	-65	56	0,89
Discouraged work-seekers	11,8	15,1	19	-11	48	0,20
Other	2,5	3,4	-24	-79	31	0,40
Rates (%)						
Unemployment rate	4,0	6,7	-4,0	-1,0	-1,0	0,03
Employed / population ratio (Absorption	2,2	3,9	2,8	-1,0	0,0	0,17
Labour force participation rate	1,7	2,6	0,6	-1,0	0,0	0,74
KwaZulu Natal						
Population 15-64 yrs						
Labour Force	1,8	1,4	113	-2	228	0,05
Employed	1,8	1,5	109	5	211	0,04
Unemployed	7,7	6,2	5	-84	93	0,91
Not economically active	1,5	1,2	-2	-117	112	0,97
Discouraged work-seekers	5,3	5,3	-14	-99	68	0,73
Other	1,5	1,6	13	-96	121	0,82
Rates (%)						
Unemployment rate	6,7	5,5	-0,6	-1,0	0,0	0,67
Employed / population ratio (Absorption	1,8	1,5	1,0	-1,0	0,0	0,20
Labour force participation rate	1,8	1,4	0,9	-1,0	0,0	0,28

Appendix 2.2B: Sampling variability for labour force characteristics by province (Continued)						
	Jul-Sep 2010 CV	Jul-Sep 2011 CV	Estimate	Lower 95%	Upper 95%	P-value
North West						
Population 15-64 yrs						
Labour Force	3,0	2,9	-39	-90	11	0,13
Employed	3,7	3,2	-34	-89	20	0,22
Unemployed	6,5	6,1	-5	-44	33	0,80
Not economically active	2,9	2,5	62	11	113	0,02
Discouraged work-seekers	11,1	7,3	103	59	145	0,00
Other	3,0	3,0	-41	-89	8	0,10
Rates (%)						
Unemployment rate	5,7	4,8	0,6	-1,0	0,0	0,75
Employed / population ratio (Absorption	3,7	3,2	-2,1	-1,0	0,0	0,13
Labour force participation rate	3,0	2,9	-2,5	-1,0	0,0	0,05
Gauteng						
Population 15-64 yrs						
Labour Force	1,3	1,0	115	-23	251	0,10
Employed	1,4	1,3	25	-115	164	0,72
Unemployed	4,7	3,1	89	-31	208	0,15
Not economically active	3,0	2,4	5	-132	141	0,94
Discouraged work-seekers	13,2	14,1	-77	-153	-2	0,05
Other	2,7	2,1	81	-40	203	0,19
Rates (%)						
Unemployment rate	4,0	2,7	1,1	-1,0	0,0	0,31
Employed / population ratio (Absorption	1,4	1,3	-0,5	-1,0	0,0	0,62
Labour force participation rate	1,3	1,0	0,4	-1,0	0,0	0,66

Appendix 2.2B: Sampling variability for labour force characteristics by province (Concluded)						
	Jul-Sep 2010 CV	Jul-Sep 2011 CV	Estimate	Lower 95%	Upper 95%	P-value
Mpumalanga						
Population 15-64 yrs						
Labour Force	2,1	1,7	42	-20	102	0,18
Employed	2,8	2,3	21	-32	72	0,44
Unemployed	7,2	5,5	21	-23	65	0,34
Not economically active	2,5	2,0	-4	-65	57	0,91
Discouraged work-seekers	6,7	8,4	20	-16	55	0,28
Other	2,7	2,6	-23	-74	27	0,37
Rates (%)						
Unemployment rate	6,3	4,9	0,7	-1,0	0,0	0,63
Employed / population ratio (Absorption	2,8	2,3	0,3	-1,0	0,0	0,83
Labour force participation rate	2,1	1,7	0,9	-1,0	0,0	0,50
Limpopo						
Population 15-64 yrs						
Labour Force	2,6	2,8	63	1	124	0,04
Employed	3,8	3,4	121	42	198	0,00
Unemployed	6,4	7,2	-57	-110	-6	0,03
Not economically active	1,5	1,7	2	-60	63	0,94
Discouraged work-seekers	5,6	4,2	89	44	133	0,00
Other	1,7	2,0	-86	-151	-23	0,01
Rates (%)						
Unemployment rate	6,6	6,9	-5,8	-1,0	-1,0	0,01
Employed / population ratio (Absorption	3,8	3,4	3,0	0,0	0,0	0,01
Labour force participation rate	2,6	2,8	1,1	-1,0	0,0	0,21

Appendix 3.1B: Sampling variability for the employed by industry and sex						
	Jul-Sep 2010 CV	Jul-Sep 2011 CV	Estimate	Lower 95%	Upper 95%	P-value
Both sexes	0,7	0,7	343	113	573	0,00
Agriculture	4,9	6,2	-16	-91	58	0,67
Mining	6,3	7,5	21	-30	70	0,42
Manufacturing	2,9	3,1	24	-120	166	0,75
Utilities	11,1	11,8	-26	-56	4	0,09
Construction	4,0	5,1	10	-122	142	0,88
Trade	2,0	2,1	65	-95	223	0,42
Transport	4,2	3,7	-17	-94	59	0,66
Finance	2,8	2,3	143	32	254	0,01
Community and social services	2,1	2,2	158	3	312	0,05
Private households	3,7	3,1	-21	-121	78	0,68
Women	1,0	1,0	206	60	351	0,01
Agriculture	7,2	8,5	3	-35	39	0,89
Mining	14,6	19,6	-2	-19	15	0,85
Manufacturing	4,6	4,7	6	-69	81	0,87
Utilities	19,3	25,7	-12	-25	0	0,06
Construction	11,1	7,5	-4	-36	27	0,80
Trade	2,6	2,6	16	-81	111	0,76
Transport	7,6	8,9	-15	-47	16	0,35
Finance	3,8	3,5	111	43	179	0,00
Community and social services	2,5	2,4	123	21	223	0,02
Private households	3,3	3,3	-19	-95	56	0,62
Men	0,8	0,9	138	-33	308	0,11
Agriculture	5,7	6,7	-19	-76	38	0,52
Mining	6,5	7,8	22	-24	67	0,34
Manufacturing	2,9	3,3	17	-84	118	0,74
Utilities	11,9	12,2	-14	-37	9	0,25
Construction	3,9	5,6	15	-110	138	0,82
Trade	2,5	3,2	50	-71	169	0,42
Transport	4,5	4,0	-2	-68	63	0,95
Finance	3,6	3,2	32	-54	117	0,46
Community and social services	3,1	3,1	35	-58	128	0,45
Private households	8,5	6,3	-2	-48	43	0,93

Appendix 3.4B: Sampling variability for the employed by province and sector						
	Jul-Sep 2010 CV	Jul-Sep 2011 CV	Estimate	Lower 95%	Upper 95%	P-value
South Africa	0,7	0,7	343	113	573	0,00
Formal sector (Non-agricultural)	0,9	1,0	393	167	619	0,00
Informal sector (Non-agricultural)	2,2	2,4	-12	-140	114	0,84
Agriculture	4,9	6,2	-16	-91	58	0,67
Private households	3,7	3,1	-21	-121	78	0,68
Western Cape	1,9	1,5	52	-28	130	0,20
Formal sector (Non-agricultural)	2,6	2,2	69	-20	157	0,13
Informal sector (Non-agricultural)	5,7	8,0	-2	-37	31	0,89
Agriculture	6,2	11,7	-23	-56	7	0,14
Private households	7,9	10,6	9	-15	32	0,46
Eastern Cape	2,7	2,4	-8	-85	67	0,82
Formal sector (Non-agricultural)	4,2	3,0	59	-11	128	0,10
Informal sector (Non-agricultural)	5,8	7,1	-46	-90	-5	0,03
Agriculture	14,9	24,1	-9	-33	13	0,42
Private households	9,4	11,6	-12	-42	18	0,44
Northern Cape	3,7	2,4	2	-25	28	0,88
Formal sector (Non-agricultural)	5,0	3,8	-3	-26	20	0,84
Informal sector (Non-agricultural)	12,3	10,7	-1	-12	9	0,88
Agriculture	12,6	11,7	7	-8	23	0,33
Private households	13,5	17,3	-2	-17	11	0,74
Free State	2,2	3,9	58	-17	132	0,13
Formal sector (Non-agricultural)	3,5	6,9	54	-28	133	0,19
Informal sector (Non-agricultural)	7,9	7,0	11	-20	42	0,48
Agriculture	9,2	11,6	1	-14	14	0,90
Private households	11,0	8,2	-7	-33	18	0,59
KwaZulu Natal	1,8	1,5	109	5	211	0,04
Formal sector (Non-agricultural)	2,3	2,5	37	-60	133	0,45
Informal sector (Non-agricultural)	4,7	5,8	86	14	157	0,02
Agriculture	16,3	17,8	-22	-48	4	0,11
Private households	9,4	7,8	7	-53	66	0,82

Appendix 3.4B: Sampling variability for the employed by province and sector (concluded)						
	Jul-Sep 2010 CV	Jul-Sep 2011 CV	Estimate	Lower 95%	Upper 95%	P-value
North West	3,7	3,2	-34	-89	20	0,22
Formal sector (Non-agricultural)	5,5	4,5	-1	-57	54	0,98
Informal sector (Non-agricultural)	8,1	7,5	-16	-37	4	0,13
Agriculture	19,0	21,8	-4	-15	5	0,40
Private households	9,2	13,2	-12	-32	5	0,18
Gauteng	1,4	1,3	25	-115	164	0,72
Formal sector (Non-agricultural)	1,8	1,6	61	-77	198	0,38
Informal sector (Non-agricultural)	5,5	5,3	-31	-92	29	0,32
Agriculture	36,5	22,5	5	-19	28	0,67
Private households	8,8	6,2	-10	-67	46	0,73
Mpumalanga	2,8	2,3	21	-32	72	0,44
Formal sector (Non-agricultural)	3,1	4,0	6	-47	58	0,83
Informal sector (Non-agricultural)	5,8	6,2	-4	-30	20	0,72
Agriculture	13,7	13,5	1	-17	18	0,92
Private households	7,6	7,1	19	3	33	0,01
Limpopo	3,8	3,4	121	42	198	0,00
Formal sector (Non-agricultural)	5,4	4,1	112	51	172	0,00
Informal sector (Non-agricultural)	6,4	4,9	-8	-55	38	0,72
Agriculture	11,9	25,0	29	-15	72	0,20
Private households	12,4	10,8	-12	-32	8	0,26

Appendix 3.5B: Sampling variability for the employed by sex and occupation						
	Jul-Sep 2010 CV	Jul-Sep 2011 CV	Estimate	Lower 95%	Upper 95%	P-value
Both sexes	0,7	0,7	343	113	573	0,00
Manager	3,4	3,7	61	-43	162	0,25
Professional	4,1	4,2	58	-28	143	0,18
Technician	2,7	2,5	22	-75	116	0,66
Clerk	2,7	2,5	15	-84	113	0,77
Sales and services	2,6	2,3	117	-8	241	0,07
Skilled agriculture	14,3	12,4	-15	-42	11	0,28
Craft and related trade	2,6	3,6	48	-96	193	0,51
Plant and machine operator	3,6	3,1	-65	-172	42	0,24
Elementary	2,1	2,1	112	-33	255	0,13
Domestic worker	3,2	3,3	-9	-85	66	0,82
Women	1,0	1,0	206	60	351	0,01
Manager	5,5	6,0	21	-30	71	0,42
Professional	5,9	5,0	46	-8	101	0,09
Technician	3,2	3,3	23	-41	86	0,48
Clerk	3,1	3,0	19	-65	103	0,66
Sales and services	3,4	2,9	49	-26	124	0,20
Skilled agriculture	24,5	22,5	-2	-17	12	0,78
Craft and related trade	7,3	7,0	8	-29	43	0,68
Plant and machine operator	8,0	8,7	-5	-42	31	0,79
Elementary	3,1	2,9	61	-29	148	0,18
Domestic worker	3,3	3,3	-15	-89	59	0,70
Men	0,8	0,9	138	-33	308	0,11
Manager	3,7	3,9	40	-35	113	0,29
Professional	4,9	5,8	12	-47	69	0,70
Technician	4,3	4,1	-2	-74	69	0,96
Clerk	4,4	4,3	-4	-55	46	0,88
Sales and services	3,4	3,2	68	-20	154	0,13
Skilled agriculture	15,2	14,3	-13	-34	8	0,23
Craft and related trade	2,8	4,0	41	-98	180	0,56
Plant and machine operator	3,7	3,1	-60	-155	35	0,22
Elementary	2,9	2,7	51	-70	171	0,41
Domestic worker	15,9	18,7	5	-10	20	0,46