

STATISTICAL RELEASE

RS10

Number 227 - Year LXVI, 31.08.2016

Labour Force Survey

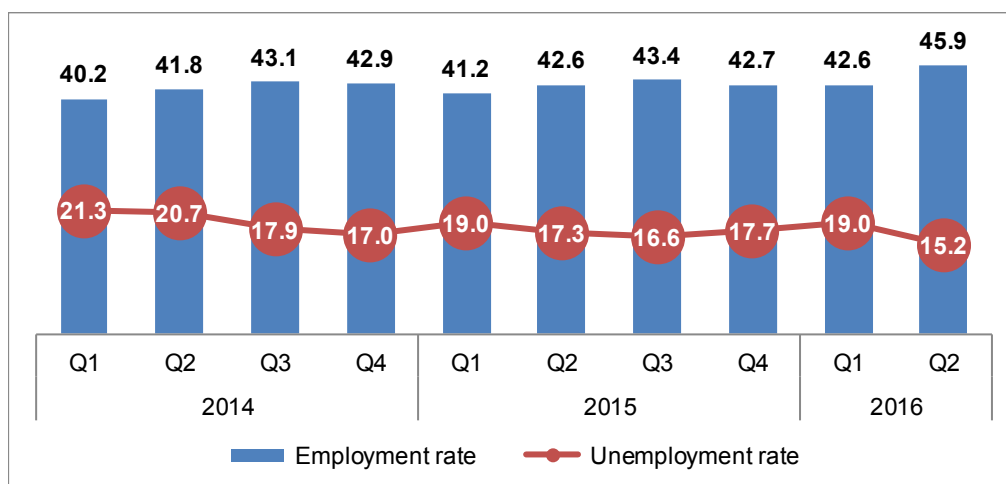
SERB227 RS10 310816

Labour Force Survey, II quarter 2016

– Preliminary results –

Labour Force Survey (LFS) is the most complex and the only internationally comparable instrument for labour trends monitoring, registering demographic and socio-economic characteristics of population aged 15 and over. The main aim of the survey is estimating the labour force volume, i.e. employed and unemployed population, where employment relates to work in both formal and informal section. Additionally, LFS deals with characteristics of employment (professional status of the employed persons, their activity, occupation, rights realized at work...) and unemployment (acquired education, duration of job seeking, previous working experience...), as well as characteristics of inactive population – their education, age, income source and readiness for involvement in labour market.

Graph 1 Trend of employment/unemployment rates (in %), population 15+, 2014-2016



In the second quarter 2016, labour force survey was conducted on the sample of approximately 15 500 households, whereof 12 271 households were interviewed, i.e. 29 943 persons aged 15 and over.

According to the Survey results, relative to the previous quarter, as well as to the same quarter last year, significant increase of employment and decrease of unemployment were noted.

Employment increase was primarily recorded in agricultural activities, referring to population aged over 55, with lower and secondary education level, and it mostly related to informal employment.

On the other hand, employment also increased among the young population who mostly were temporarily employed in the sections of Manufacturing, Wholesale and retail trade and repair of motor vehicles, as well as in the section of Professional, scientific and technical activities. Employment growth in the mentioned activities is in accordance with the trend of registered employment, also monitored by the Statistical Office of the Republic of Serbia.

NEET rate, i.e. the share in total population of young (15-24) who do not work, attend school, are not on training, has decreased, now amounting to 17.2%.

Labour Force

Number of active population aged 15 and over amounted to 3 257 000 persons in the second quarter 2016, out of which 2 761 500 related to employed and 495 500 to unemployed ones. Activity rate was 54.1%, being by 1.5 p.p. higher relative to the previous quarter, and by 2.5 p.p. higher relative to the same quarter 2015.

Active population (labour force) includes all employed and unemployed persons.

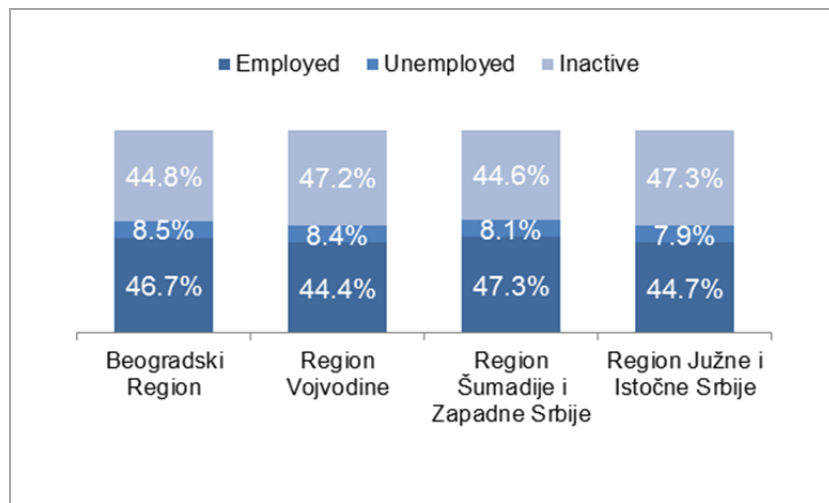
Activity rate (share of labour force) presents the percentage share of active population in total population aged 15 and over.

Increase of activity compared with the previous quarter was greater regarding women than men, the greatest in Region Vojvodine and the smallest in Beogradski Region.

Compared with the same quarter 2015, activity rate was greater regarding women than men, the greatest in Region Vojvodine and the lowest in Region Šumadije i Zapadne Srbije.

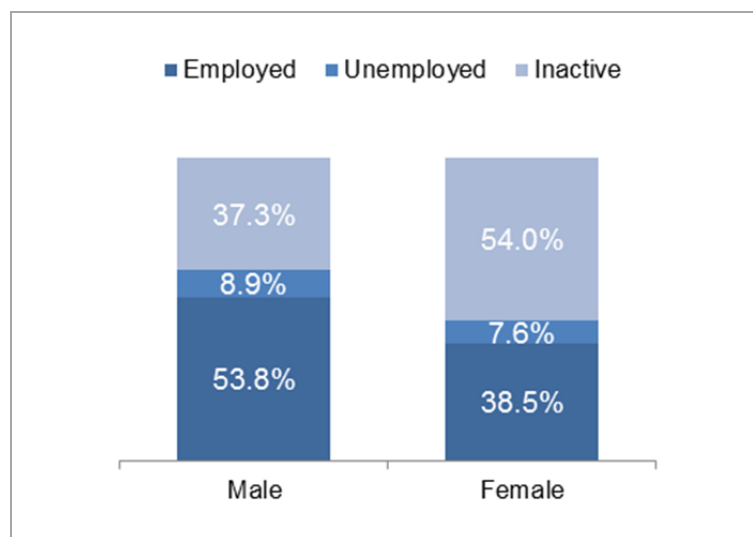
In the structure of population by working status, regions have different distribution. Rates of activity and employment are the greatest in Region Šumadije i Zapadne Srbije (55.4% and 47.3%, respectively) and in Beogradski Region (55.2% and 46.7%, respectively), while the share of unemployed in total population aged 15 and over was almost equal in all regions (Graph 2).

Graph 2 Working status, by region, 15+, Q2 2016



Unlike the regions, where no significant difference exists regarding the employment chances, distribution of male and female population by working status indicates significant sex inequality on labour market. Namely, while activity rate of males aged 15 and over amounted to 62.7%, regarding females, it amounted to only 46%. Employment rate of males is by even 15.3 p.p. higher than of females (Graph 3).

Graph 3 Working status, by sex, 15+, Q2 2016



Employed population

Number of employed persons in the second quarter 2016 amounted to 2 761 500, presenting the increase of 191 000 persons relative to previous quarter and increase of 174 000 persons relative to the second quarter 2015.

Employed persons are those that during the reference week worked for payment (in money or goods) for an employer, as self-employed or as an unpaid family member. Included are also those persons that have work but have been absent from it during the reference week, but which have a guaranty to return to it.

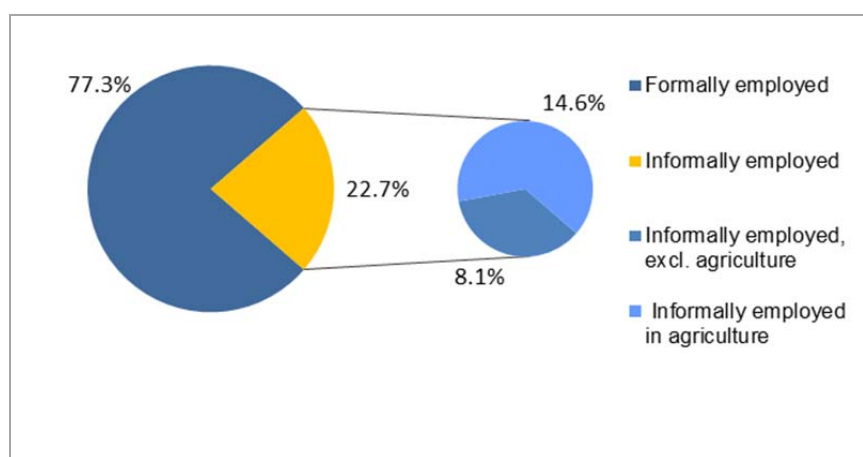
Employment rate is the share of employed in the total population aged 15 and over.

Informal employment is considered a work in unregistered companies, work in registered companies but without a contract, and the work of helping members of the household.

Informal employment rate is the share of informally employed in total employment.

During 2015 (from the second quarter 2015 to the second quarter 2016), employment in formal sector increased by 56 600, and in informal sector by 117.200 persons, whereby, increase of informal employment was mostly recorded in agricultural activities¹⁾, where the number of employed increased by 83.000. Rate of informal employment in the second quarter 2016 amounted to 22.7% on the level of all activity sections. In non- agriculture, informal employment rate significantly decreased, amounting to 10.6% (Graph 4).

Graph 4. Formal/Informal employment, 15+, Q2 2016

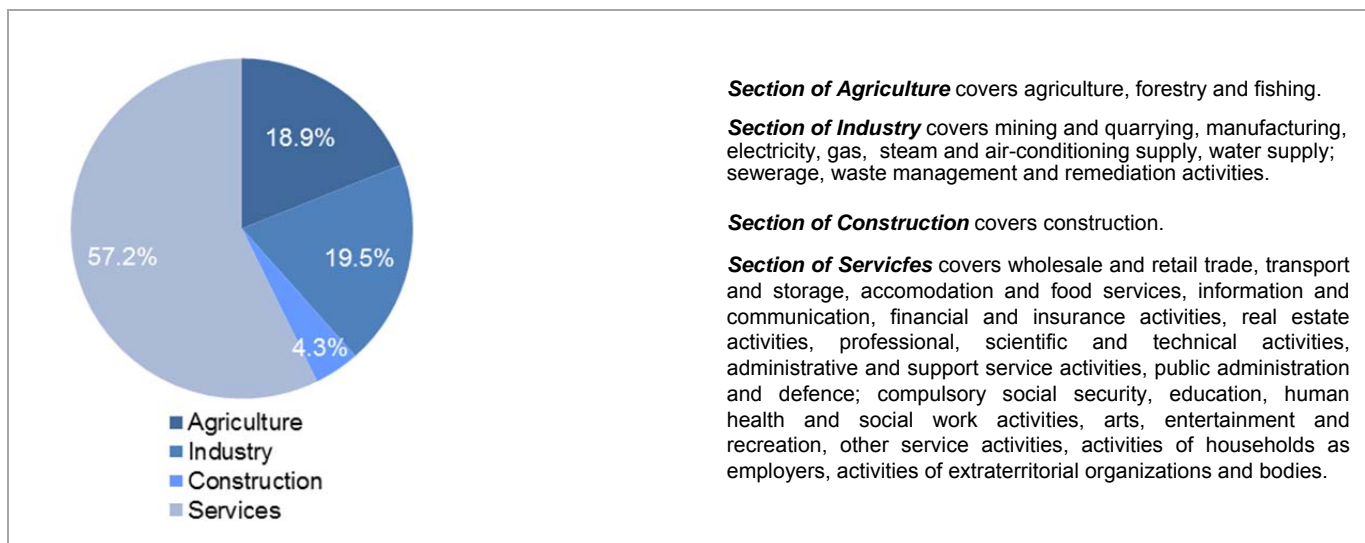


Informal employment rate excluding agriculture presents the share of informally employed whose activity is non-agricultural in total non-agricultural employment.

¹⁾ Employment in agriculture comprises the whole section of Agriculture, Forestry and Fishers, as well as a part of the section Activities of households as employers referring to agriculture.

Regarding the section division of employment, the prevailing are service activities, while the share of industry in total employment is below 20% (Graph 5).

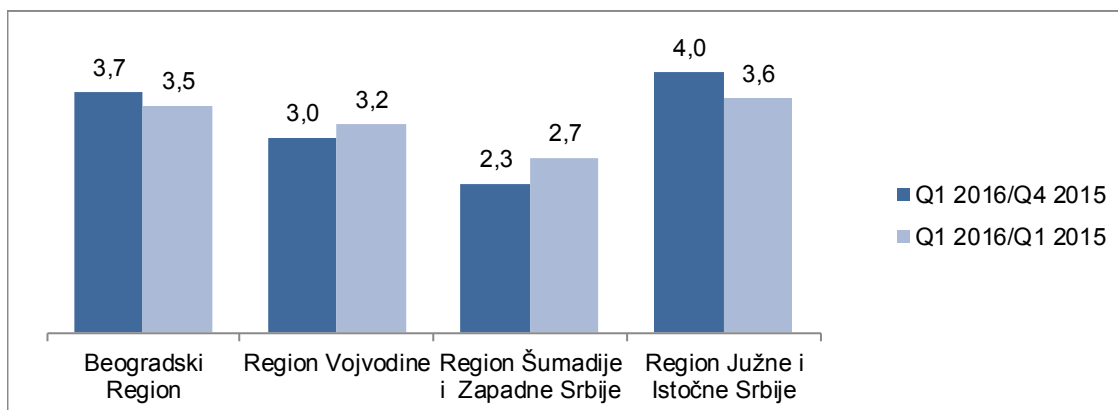
Graph 5 Structure of employed by section of activity, 15+, Q2 2016



Share of employed persons in total population is the greatest in Region Šumadije i Zapadne Srbije (47.3%), followed by Beogradski Region (46.7%) and Region Južne i Istočne Srbije (44.7%), while employment rate is the lowest in Region Vojvodine (44.4%).

Relative to the previous quarter and to the same quarter 2015, in the second quarter 2016, the most significant increase of employment rate was recorded in Region Južne i Istočne Srbije (4.0 and 3.6 p.p. respectively) and in Beogradski Region (3.7 and 3.5 p.p. respectively) (Graph 6).

Graph 6 Changes in unemployment rates (in percentage points), 15+, Q2 2016



Employment in the observed periods noted the lowest increase in Region Šumadije i Zapadne Srbije, 2.3 p.p. relative to the previous quarter and 2.7 p.p. relative to the same quarter of the previous year.

Unemployed population

In the second quarter 2016, unemployment of persons aged 15 and over was 495 500, which is by 106 700 persons less than in the previous quarter and by 46 600 persons less than in the second quarter 2015. Unemployment noted more significant decrease regarding males than females, both relative to the previous quarter, and relative to the same quarter of 2015.

Unemployed persons are the persons who, in the respective week, did no work for remuneration, who undertook active steps to find a job during four-week period preceding the respective week and who were able to start working in two-week time after the referent week.

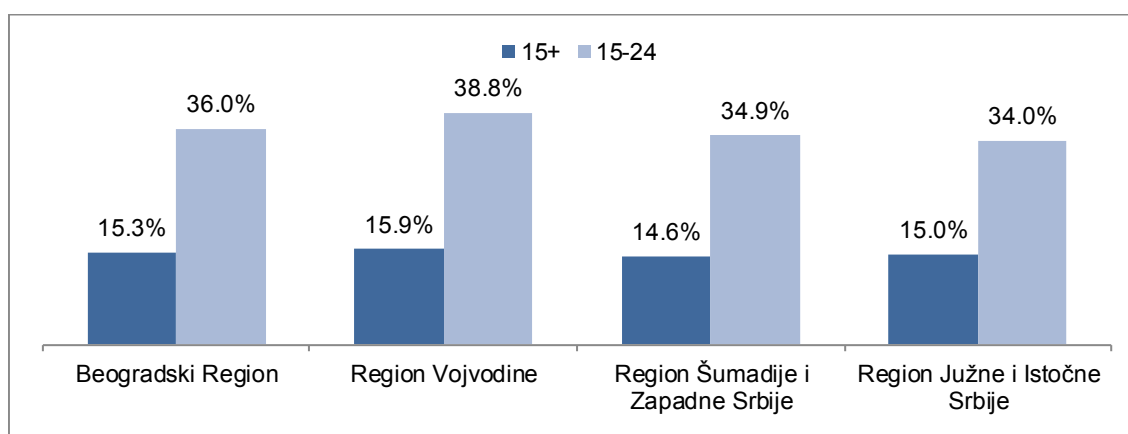
Unemployment rate presents the percentage share of unemployed population in labour force (employed and unemployed), aged 15 and over.

Long-term unemployment rate presents the percentage share of the unemployed for one year and more, in the total labour force (employed and unemployed), aged 15 and over.

NEET rate – refers to share of persons aged 15 to 24, neither employed, nor in education, training, in total population of that age.

Unemployment rate of population aged 15 and over amounted to 15.2% on the level of whole territory of Serbia, where the highest value was recorded in Beogradski Region (15.9%), and the lowest in Region Šumadije i Zapadne Srbije (14.6%) (Graph 7).

Graph 7 Unemployment rates of persons aged 15+ and 15-24 (in %), by regions, Q2 2016



Unemployment rate of young population aged 15-24 was the highest in Region Vojvodine (38.8%), and the lowest in Region Južne I Istočne Srbije (34.0%).

Compared with the previous quarter, decrease of unemployment was most significantly noted in Beogradski Region and in Region Južne I Istočne Srbije.

Long-term unemployment rate is 10.2%, being by 0.9 p.p. less relative to the same period 2015.

NEET rate was 17.2%, denoting decrease of 1.8 p.p. relative to the previous quarter and of 1.5 p.p. relative to the same quarter 2015.

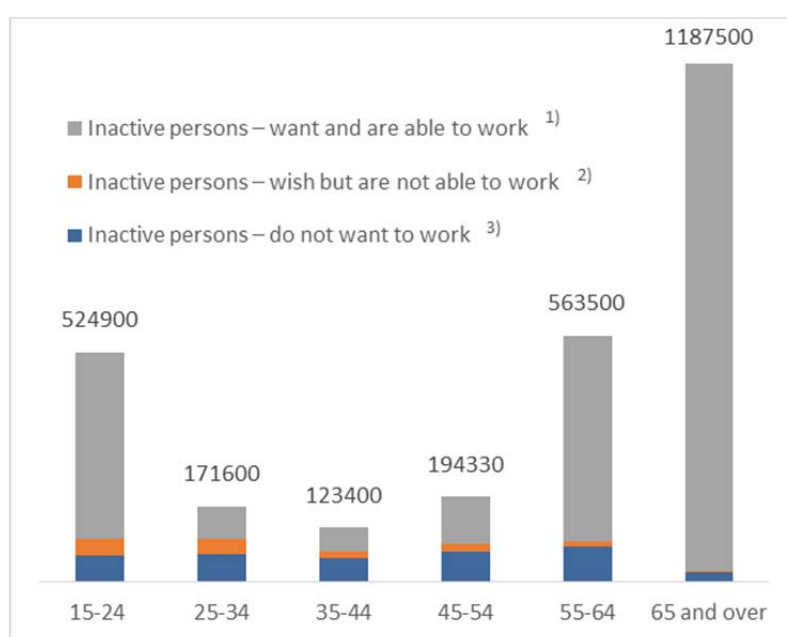
Inactive population

Number of inactive population in the second quarter 2016 amounted to 2 765 100, being by 93 100 less relative to the previous quarter and by 176 700 less compared to the second quarter 2015. Inactivity rate is 45.9%, i.e. by 1.5 p.p. less than in the previous quarter, simultaneously being significantly greater in female population (54.0%) than in male population (37.3%). Relative to the second quarter 2015, inactivity rate decreased by 2.5 p.p.

Inactive population includes all persons aged 15 and over who are not classified in employed and unemployed population. Inactive population also comprises students, pensioners, persons performing household tasks, as well as all other persons who performed no paid job in the observed week, did not actively seek a job and who were not able to start working in two-week time after the observed week.

Inactivity rate presents the percentage share of inactive population in total population aged 15 and over.

Graph 8 Inactive population by employment opportunities and age groups



¹⁾ Reasons for not wanting to work can be: schooling or training, disease or incapacity, pension, care of children or incapable adults, lost hope in possibility of finding a job or other personal or family reasons.

²⁾ Persons who wish but are not able to start working due to schooling, disease or incapacity, compulsory social work or personal reasons.

³⁾ Persons who want to work (would accept job in case it is offered) and are able to start working, but they do not actively seek a job.

For more detailed description of the Survey and definitions of labour force, see the methodology of Labour Force Survey on www.stat.gov.rs.

Rules of rounding numbers

Results of Labour Force Survey are published as round numbers, in thousands, with one decimal place.

Totals (sums) do not always correspond with the sum of separate data, considering that provided estimates in statistical publications are calculated using unrounded numbers (obtaining more precise data). Graphs in publications are also designed on the basis of unrounded data.

RESULTS

Table 1 Main contingents of labour force by sex, population aged 15 and over, Q2 2016

	II quarter 2016	Changes relative to previous quarter		Changes relative to same quarter of 2015	
	(in thousand)	(in thousand)	%	(in thousand)	%
Total	6022.1	-8.9	-0.1	-49.6	-0.8
Active	3257.0	84.2	2.7	127.1	4.1
Employed	2761.5	190.8	7.4	173.7	6.7
Unemployed	495.5	-106.7	-17.7	-46.6	-8.6
Inactive	2765.1	-93.1	-3.3	-176.7	-6.0
Male	2904.4	-4.3	-0.1	-23.6	-0.8
Active	1822.0	43.8	2.5	59.0	3.3
Employed	1562.3	112.9	7.8	85.5	5.8
Unemployed	259.8	-69.1	-21.0	-26.5	-9.3
Inactive	1082.3	-48.2	-4.3	-82.6	-7.1
Female	3117.8	-4.6	-0.1	-26.0	-0.8
Active	1435.0	40.3	2.9	68.1	5.0
Employed	1199.3	77.9	7.0	88.2	7.9
Unemployed	235.7	-37.6	-13.8	-20.1	-7.9
Inactive	1682.8	-44.9	-2.6	-94.1	-5.3

Table 1a Rates of activity, employment, unemployment and inactivity by sex, population aged 15 and over, Q2 2016

	II quarter 2016	Changes relative to previous quarter	Changes relative to same quarter of 2015
	(%)	p.p.	
Total			
Activity rate	54.1	1.5	2.5
Employment rate	45.9	3.2	3.2
Unemployment rate	15.2	-3.8	-2.1
Inactivity rate	45.9	-1.5	-2.5
Male			
Activity rate	62.7	1.6	2.5
Employment rate	53.8	4.0	3.4
Unemployment rate	14.3	-4.2	-2.0
Inactivity rate	37.3	-1.6	-2.5
Female			
Activity rate	46.0	1.4	2.5
Employment rate	38.5	2.6	3.1
Unemployment rate	16.4	-3.2	-2.3
Inactivity rate	54.0	-1.4	-2.5

Table 2 Main contingents of labour force by sex, population aged 15 to 24, Q2 2016

	II quarter 2016	Changes relative to previous quarter		Changes relative to same quarter of 2015	
	(in thousand)	(in thousand)	%	(in thousand)	%
Total	759.2	-4.6	-0.6	-27.8	-3.5
Active	234.3	11.9	5.4	15.2	6.9
Employed	149.6	25.6	20.6	23.4	18.5
Unemployed	84.7	-13.6	-13.9	-8.2	-8.8
Inactive	524.9	-16.6	-3.1	-43.0	-7.6
Male	390.6	-2.4	-0.6	-13.7	-3.4
Active	145.3	6.2	4.4	6.2	4.5
Employed	99.7	17.5	21.3	14.8	17.4
Unemployed	45.6	-11.3	-19.9	-8.6	-15.8
Inactive	245.3	-8.6	-3.4	-19.9	-7.5
Female	368.5	-2.3	-0.6	-14.1	-3.7
Active	89.0	5.7	6.9	9.0	11.2
Employed	49.9	8.0	19.2	8.6	20.7
Unemployed	39.1	-2.3	-5.6	0.4	1.0
Inactive	279.6	-8.0	-2.8	-23.1	-7.6

Table 2a Rates of activity, employment, unemployment and inactivity by sex, population aged 15 to 24, Q2 2016

	II quarter 2016	Changes relative to previous quarter	Changes relative to same quarter of 2015
	(%)	p.p.	
Total			
Activity rate	30.9	1.7	3.0
Employment rate	19.7	3.5	3.7
Unemployment rate	36.1	-8.1	-6.2
Inactivity rate	69.1	-1.7	-3.0
Male			
Activity rate	37.2	1.8	2.8
Employment rate	25.5	4.6	4.5
Unemployment rate	31.4	-9.5	-7.6
Inactivity rate	62.8	-1.8	-2.8
Female			
Activity rate	24.1	1.7	3.2
Employment rate	13.5	2.3	2.7
Unemployment rate	43.9	-5.8	-4.4
Inactivity rate	75.9	-1.7	-3.2
NEETs (15-24)	17.2	-1.8	-1.5
Early school leaving (18-24) ¹⁾	8.0	1.4	0.5

¹⁾ The indicator consist of persons aged 18-24 whose highest level of completed education is primary education and who did not attend any formal or non-formal education in the last 4 weeks.

Table 3 Active population aged 15 and over by sex and region, Q2 2016

	II quarter 2016	Changes relative to previous quarter		Changes relative to same quarter of 2015	
	(in thousand)	(in thousand)	%	(in thousand)	%
Active - total	3257.0	84.1	2.7	127.1	4.1
Sex					
Male	1822.0	43.8	2.5	59.0	3.3
Female	1435.0	40.3	2.9	68.1	5.0
Region					
Beogradski Region	791.9	15.4	2.0	37.1	4.9
Region Vojvodine	851.9	25.0	3.0	43.9	5.4
Region Šumadije i Zapadne Srbije	930.8	24.2	2.7	21.6	2.4
Region Južne i Istočne Srbije	682.4	19.6	3.0	24.5	3.7
Region Kosovo i Metohija

Table 4 Employed persons aged 15 and over, by sex and region, Q2 2016

	II quarter 2016	Changes relative to previous quarter		Changes relative to same quarter of 2015	
	(in thousand)	(in thousand)	%	(in thousand)	%
Employed - total	2761.5	190.8	7.4	173.7	6.7
Sex					
Male	1562.3	112.9	7.8	85.5	5.8
Female	1199.3	77.9	7.0	88.2	7.9
Region					
Beogradski Region	670.4	53.3	8.6	51.6	8.3
Region Vojvodine	716.9	48.6	7.3	45.6	6.8
Region Šumadije i Zapadne Srbije	794.5	38.0	5.0	37.1	4.9
Region Južne i Istočne Srbije	579.8	50.9	9.6	39.4	7.3
Region Kosovo i Metohija

Table 5 Formally/ Informally employed persons aged 15 and over, Q2 2016

	II quarter 2016	Changes relative to previous quarter		Changes relative to same quarter of 2015	
	(in thousand)	(in thousand)	%	(in thousand)	%
Employed persons	2761.5	190.8	7.4	173.7	6.7
Formally employed	2134.9	86.2	4.2	56.6	2.7
- Formally employed, excl. agriculture ¹⁾	1889.2	59.2	3.2	33.3	1.8
- Formally employed in agriculture	245.7	26.9	12.3	23.2	10.4
Informally employed	626.7	104.7	20.0	117.2	23.0
- Informally employed, excl. agriculture	224.2	53.1	31.0	34.2	18.0
- Informally employed in agriculture	402.5	51.6	14.7	83.0	26.0
	%	(p.p.)			
Rate of informal employment (total)	22.7	2.4		3.0	
Rate of informal employment, excl. agriculture	10.6	2.1		1.3	

¹⁾ Employment in agriculture comprises the whole section of Agriculture, Forestry and Fishers, as well as a part of the section Activities of households as employers referring to agriculture.

Table 6 Unemployed persons aged 15 and over, by sex and region, Q2 2016

	II quarter 2016	Changes relative to previous quarter		Changes relative to same quarter of 2015	
	(in thousand)	(in thousand)	%	(in thousand)	%
Unemployed - total	495.5	-106.7	-17.7	-46.6	-8.6
Sex					
Male	259.8	-69.1	-21.0	-26.5	-9.3
Female	235.7	-37.6	-13.8	-20.1	-7.9
Region					
Beogradski Region	121.5	-37.8	-23.7	-14.4	-10.6
Region Vojvodine	135.0	-23.6	-14.9	-1.7	-1.2
Region Šumadije i Zapadne Srbije	136.3	-13.8	-9.2	-15.5	-10.2
Region Južne i Istočne Srbije	102.6	-31.4	-23.4	-15.0	-12.8
Region Kosovo i Metohija
	%	(p.p.)			
Long-term unemployment rate	10.2		-2.0		-0.9

Table 7 Inactive population aged 15 and over, by sex and region, Q2 2016

	II quarter 2016	Changes relative to previous quarter		Changes relative to same quarter of 2015	
	(in thousand)	(in thousand)	%	(in thousand)	%
Inactive - total	2765.1	-93.1	-3.3	-176.7	-6.0
Sex					
Male	1082.3	-48.2	-4.3	-82.6	-7.1
Female	1682.8	-44.9	-2.6	-94.1	-5.3
Region					
Beogradski Region	642.4	-15.3	-2.3	-35.3	-5.2
Region Vojvodine	761.3	-27.5	-3.5	-58.6	-7.2
Region Šumadije i Zapadne Srbije	748.2	-27.6	-3.6	-40.8	-5.2
Region Južne i Istočne Srbije	613.2	-22.7	-3.6	-42.0	-6.4
Region Kosovo i Metohija

Table 8 Main contingents of labour force by region and age groups, Q2 2016

	Total	Srbija – North		Srbija – South		
		Beogradski Region	Region Vojvodine	Region Šumadije i Zapadne Srbije	Region Južne i Istočne Srbije	Region Kosovo i Metohija
	(in thousand)					
Population aged 15+	6022.1	1434.4	1613.2	1679.0	1295.6	...
Active	3257.0	791.9	851.9	930.8	682.4	...
Employed	2761.5	670.4	716.9	794.5	579.8	...
Unemployed	495.5	121.5	135.0	136.3	102.6	...
Inactive	2765.1	642.4	761.3	748.2	613.2	...
	%					
Activity rate	54.1	55.2	52.8	55.4	52.7	...
Employment rate	45.9	46.7	44.4	47.3	44.7	...
Unemployment rate	15.2	15.3	15.9	14.6	15.0	...
Inactivity rate	45.9	44.8	47.2	44.6	47.3	...
	(in thousand)					
Young population (15–24)	759.2	166.5	206.2	219.1	167.4	...
Active	234.3	51.1	71.3	64.2	47.6	...
Employed	149.6	32.7	43.7	41.8	31.4	...
Unemployed	84.7	18.4	27.7	22.4	16.2	...
Inactive	524.9	115.4	134.9	154.8	119.8	...
	%					
Activity rate	30.9	30.7	34.6	29.3	28.4	...
Employment rate	19.7	19.7	21.2	19.1	18.8	...
Unemployment rate	36.1	36.0	38.8	34.9	34.0	...
Inactivity rate	69.1	69.3	65.4	70.7	71.6	...
	(in thousand)					
Working – age population (15–64)	4685.1	1130.4	1271.5	1301.6	981.5	...
Active	3107.5	774.6	829.9	863.3	639.7	...
Employed	2613.1	654.2	694.8	727.0	537.1	...
Unemployed	494.3	120.4	135.0	136.3	102.6	...
Inactive	1577.6	355.8	441.7	438.3	341.8	...
	%					
Activity rate	66.3	68.5	65.3	66.3	65.2	...
Employment rate	55.8	57.9	54.6	55.9	54.7	...
Unemployment rate	15.9	15.5	16.3	15.8	16.0	...
Inactivity rate	33.7	31.5	34.7	33.7	34.8	...

Starting from 1999 the Statistical Office of the Republic of Serbia has not at disposal and may not provide available certain data relative to AP Kosovo and Metohia and therefore these data are not included in the coverage for the Republic of Serbia (total).

Contact: ars@stat.gov.rs, Phone: 011 2412 922, ext 372

Published and printed by: Statistical Office of the Republic of Serbia, Milana Rakića 5, Belgrade

Phone: 011 2412 922 • Fax: 011 2411-260 • www.stat.gov.rs

Responsible: Dr Miladin Kovačević, Director

Circulation: 20 • Periodicity: quarterly