

# STATISTICAL RELEASE

# RS10

Number 141 - Year LXVI, 31.05.2016

**Labour Force Survey**

SERB141 RS10 310516

## Labour Force Survey, I quarter 2016

– Preliminary results –

Labour Force Survey (LFS) is the survey on labour force characteristics. The main aim of the survey is obtaining the data on three basic, mutually exclusive contingents of population: employed, unemployed and inactive population. Target group refers to population aged 15 and over, and collected data are used for monitoring, measuring and estimating of socio – economic trends in the Republic of Serbia.

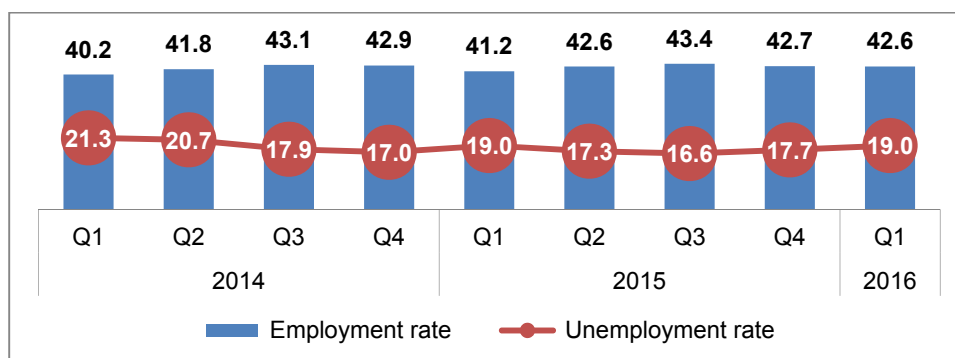
In conducting this survey, applied were the methodological solutions harmonized with the recommendations and definitions of the International Labour Organization (ILO) and the requirements of Eurostat, thus making LFS completely harmonized and comparable with European Labour Force Survey (EU-LFS), as the greatest European households – based survey.

The Survey is conducted on randomly selected representative sample. In the first quarter of 2016, approximately 14 000 households were selected in the sample, out of which 11 532 households were interviewed, i.e. 28 240 persons aged 15 and over.

**Note:** Aimed at increasing preciseness of labour force contingents estimations, the statistical Office of the republic of Serbia (SORS), has started, since the beginning of 2016, applying the new methodology of estimating, i.e. weights calculations, by which sample is expanded on the level of populaton. The mentioned change has disabled comparisons of data series, and SORS has performed revision of 2014 and 2015 data, thus providing comparability, starting with 2014.

For more detailed description of the Survey and labour force definitions, see methodology of Labour Force Survey on [www.stat.gov.rs](http://www.stat.gov.rs).

**Graph 1** Trend of employment/ unemployment rates (in %), population 15+, 2014-2016



Starting from 1999 the Statistical Office of the Republic of Serbia has not at disposal and may not provide available certain data relative to AP Kosovo and Metohia and therefore these data are not included in the coverage for the Republic of Serbia (total).

In the first quarter 2016, labour force, aged 15 and over, despite negative demographic trend, continues the increasing trend started in 2011. Even though, because of the discontinued data comparability for the period 2008-2013 and the following period, activity growth (share of labour force) cannot be measured in absolute numbers, at first (during 2011 and 2012), it has obviously reflected on increased unemployment, while since 2013, it resulted in employment increase.

During the previous two years employment was increasing, prevailing in the formal section, while unemployment in 2015 decreased relative to 2014, and in the first quarter 2016, number of unemployed persons has slightly increased, compared with the same quarter of the previous year.

Observing the young population (15-24), unsuitable trends on the labour market, initiated by world economic crisis in 2008, lasted up to 2014, when continuous employment increase and unemployment decrease started. Employment rate of young population in the first quarter of 2016, relative to the same quarter of 2014, increased by 3.1 p.p. (from 13.1% to 16.2%), while unemployment rate in that period decreased by almost 8 p.p. (from 52.5% to 44.2%).

## Labour Force

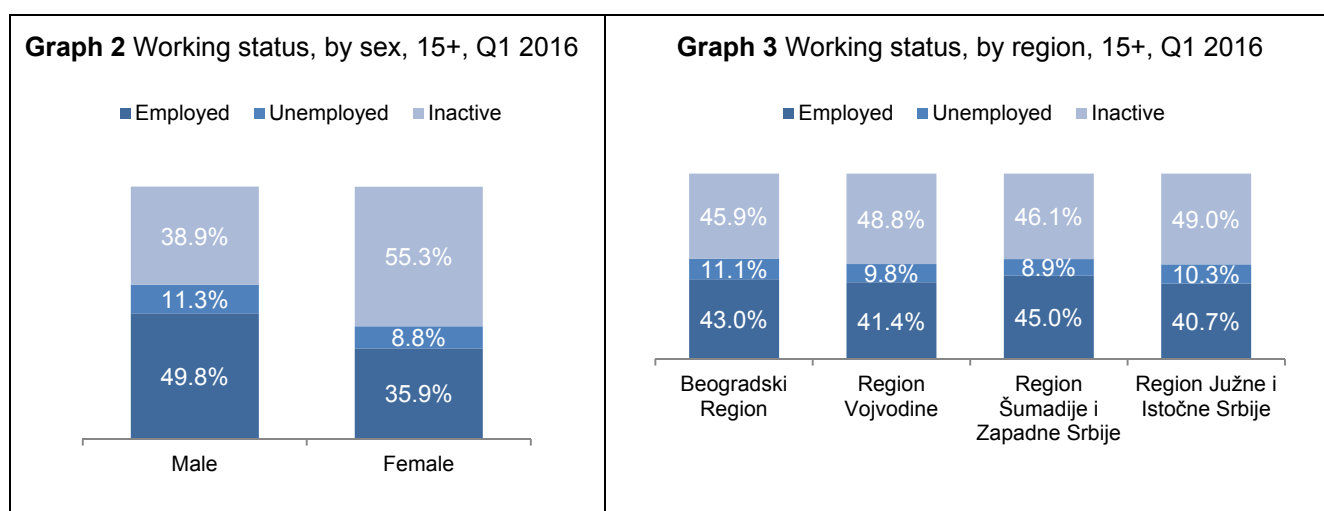
Number of active population aged 15 and over amounted to 3 172 900 persons in the first quarter 2016, out of which 2 570 700 related to employed and 602 200 to unemployed ones. Activity rate was 52.6%, being by 0.7 p.p. more relative to the previous quarter, and by 1.8 p.p. more relative to the same quarter 2015.

**Active population (labour force)** includes all employed and unemployed persons.

**Activity rate (share of labour force)** presents the percentage share of active population in total population aged 15 and over.

Increase of activity compared with the previous quarter was greater regarding women than men, significantly greater in Beogradski Region, relative to other regions.

Compared with the same quarter 2015, activity rate was greater regarding men than women, greater in Region Južne i Istočne Srbije, relative to other regions.



In the structure of population by working status, various regions noted different distribution. While the rates of activity and unemployment are the greatest in Beogradski region (54.1% and 20.5%, respectively), employment rate is the greatest in Region Šumadije i Zapadne Srbije (45.0%) (Graph 3).

Unlike the regions, where no significant difference appears regarding the chances for employment, i.e. unemployment, distribution of male and female population according to working status yet indicates the significant gender inequality on labour market. Namely, while activity rate of males aged 15 and over amounts to 61.1%, share of females is only 44.7%. Employment rate of males is by even 14 p.p. greater than employment rate of females (Graph 2).

### Employed population

Number of employed persons in the first quarter 2016 amounted to 2 570 700, presenting the decrease of 10 100 persons relative to previous quarter and increase of 66 600 persons relative to the first quarter 2015. Employment rate amounted to 42.6%, i.e. is by 1.4 p.p. more than in the same quarter of the previous year. During 15 (from the first quarter 2015 to the first quarter 2016), employment in formal sector increased by 38 200, and in informal sector by 28.400 persons, whereby, increase of informal employment was mostly recorded in agricultural activities, while in non-agricultural activities, volume of employment in non-observed section was decreased. Rate of informal employment in the first quarter 2016 amounted to 20.3% on the level of all activity sections. In non-agriculture, informal employment rate significantly decreased, amounting to 8.5%.

**Employed persons** are those that during the reference week worked for payment (in money or goods) for an employer, as self-employed or as a unpaid family member. Included are also those persons that have work but have been absent from it during the reference week, but which have a guaranty to return to it.

**Employment rate** is the share of employed in the total population aged 15 and over.

**Informal employment** is considered a work in unregistered companies, work in registered companies but without a contract, and the work of helping members of the household.

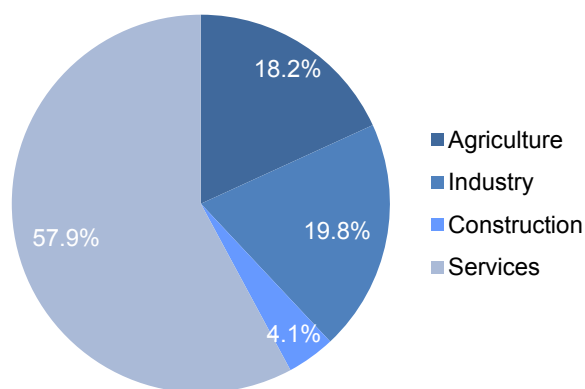
**Informal employment rate** is the share of informally employed in total employment.

**Employment in agriculture** presents the entire sector of activity Agriculture, forestry and fishing, as well as part of the sector Households that produce goods and services for its own purposes relating to agriculture.

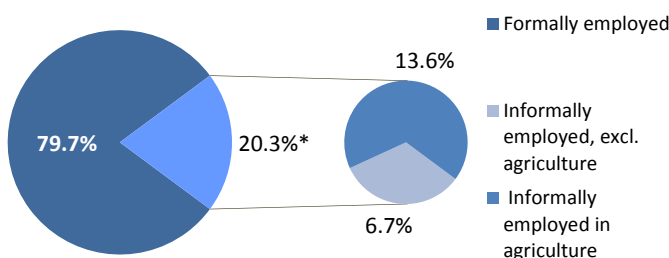
**Informal employment rate, excl. agriculture** is the share of informally employed with non-agricultural activities in total non-agricultural employment.

Regarding the section division of employment, the prevailing are service activities, while the share of industry in total employment is somewhat below 20% (Graph 4).

**Graph 4** Structure of employed by activity sections, population 15+, Q1 2016



**Graph 5** Formally / informally employed persons aged 15 and over, Q1 2016



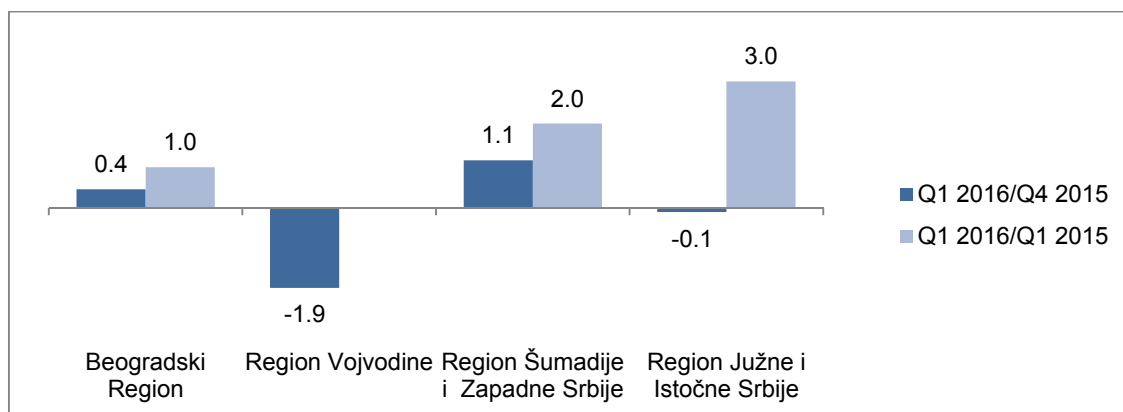
\*20.3% - Informally employed

Share of employed persons in total population is the greatest in Region Šumadije i Zapadne Srbije (45.0%), followed by Beogradski Region (43.0%) and Region Vojvodine (41.4%), while employment rate is the lowest in Region Južne i Istočne Srbije (40.7%).

Relative to the previous quarter, in the first quarter 2016, recorded was the increase of employment rate by 1.1 p.p. in Region Šumadije i Zapadne Srbije, and decrease of employment rate by 1.9 p.p. in Region Vojvodine (Graph 6).

Relative to the same quarter 2015, in the first quarter 2016, noted was the employment increase in all regions, excluding Region Vojvodine, where employment rate remained unchanged.

**Graph 6** Changes in unemployment rates (in percentage points), population 15+, Q1 2016



In Region Južne i Istočne Srbije, employment rate has increased by even 3 p.p. and in Region Šumadije i Zapadne Srbije, by 2 p.p. in the mentioned period.

### Unemployed population

In the first quarter 2016, unemployment of persons aged 15 and over reached the level of 602 200, which is by 47 400 persons more than in the previous quarter and by 14 700 persons more than in the first quarter 2015. While, comparing unemployment relative to the fourth quarter 2015, it equally increased in both sexes, unemployment growth relative to the first quarter 2015 was recorded only in male population. Regarding females, moreover, unemployment was insignificantly decreased in the observed period.

**Unemployed persons** are the persons who, in the respective week, did no work for remuneration, who undertook active steps to find a job during four-week period preceding the respective week and who were able to start working in two-week time after the referent week.

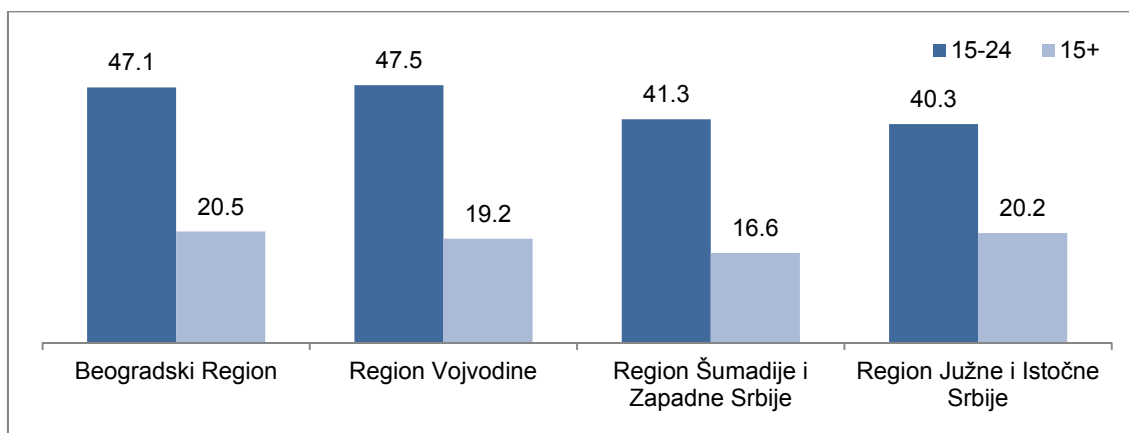
**Unemployment rate** presents the percentage share of unemployed population in labour force (employed and unemployed), aged 15 and over.

**Long-term unemployment rate** presents the percentage share of the unemployed for one year and more, in the total labour force (employed and unemployed), aged 15 and over.

**NEET rate** – refers to share of persons aged 15 to 24, neither employed, nor in education, training, in total population of that age.

Unemployment rate of population aged 15 and over amounted to 19.0% on the level of whole territory of Serbia, where, the highest value was recorded in Beogradski Region (20.5%), and the lowest in Region Šumadije i Zapadne Srbije (16.6%).

**Graph 7** Unemployment rates of persons aged 15+ and 15-24 (in %), by regions, Q1 2016



Compared with the previous quarter and the same quarter of 2015, decreased unemployment in the first quarter 2016 was noted only in Region Šumadije i Zapadne Srbije.

Long-term unemployment rate is 12.2% in the first quarter 2016, being by 1.9 p.p. more relative to the same period 2015.

On the other hand, NEET rate in the first quarter 2016 was 19.0%, denoting decrease by 0.8 p.p. relative to the previous quarter and by 1.6 p.p. relative to the same quarter 2015.

### Inactive population

Number of inactive population in the first quarter 2016 amounted to 2 858 200, being by 45 500 less relative to the previous quarter and by 131 400 less compared to the first quarter 2015. Inactivity rate is 47.4%, i.e. by 0.7 p.p. less than in the previous quarter, simultaneously being significantly greater in female population (55.3%) than in male population (38.9%). Relative to the first quarter 2015, inactivity rate decreased by 1.8 p.p.

**Inactive population** includes all persons aged 15 and over who are not classified in employed and unemployed population. Inactive population also comprises students, pensioners, persons performing household tasks, as well as all other persons who performed no paid job in the observed week, did not actively seek a job and who were not able to start working in two-week time after the observed week.

**Inactivity rate** presents the percentage share of inactive population in total population aged 15 and over.

### Rules of rounding numbers

Results of Labour Force Survey are published as round numbers, in thousands, with one decimal place.

Totals (sums) do not always correspond with the sum of separate data, considering that provided estimates in statistical publications are calculated using unrounded numbers (obtaining more precise data). Graphs in publications are also designed on the basis of unrounded data.

**Table 1** Main contingents of labour force by sex, population aged 15 and over, Q1 2016

	I quarter 2016	Changes relative to previous quarter		Changes relative to same quarter of 2015	
	(in thousand)	(in thousand)	%	(in thousand)	%
<b>Total</b>	<b>6031.1</b>	<b>-8.2</b>	<b>-0.1</b>	<b>-50.2</b>	<b>-0.8</b>
Active	3172.9	37.3	1.2	81.2	2.6
Employed	2570.7	-10.1	-0.4	66.6	2.7
Unemployed	602.2	47.4	8.5	14.7	2.5
Inactive	2858.2	-45.5	-1.6	-131.4	-4.4
<b>Male</b>	<b>2908.7</b>	<b>-3.9</b>	<b>-0.1</b>	<b>-23.6</b>	<b>-0.8</b>
Active	1778.2	2.7	0.2	50.2	2.9
Employed	1449.4	-21.3	-1.5	35.1	2.5
Unemployed	328.8	24.1	7.9	15.1	4.8
Inactive	1130.5	-6.6	-0.6	-73.8	-6.1
<b>Female</b>	<b>3122.4</b>	<b>-4.3</b>	<b>-0.1</b>	<b>-26.6</b>	<b>-0.8</b>
Active	1394.7	34.5	2.5	31.0	2.3
Employed	1121.3	11.2	1.0	31.4	2.9
Unemployed	273.3	23.3	9.3	-0.4	-0.2
Inactive	1727.7	-38.9	-2.2	-57.6	-3.2

**Table 1a** Rates of activity, employment, unemployment and inactivity by sex, population aged 15 and over, Q1 2016

	I quarter 2016	Changes relative to previous quarter	Changes relative to same quarter of 2015
	(%)	p.p.	
<b>Total</b>			
Activity rate	52.6	0.7	1.8
Employment rate	42.6	-0.1	1.4
Unemployment rate	19.0	1.3	0.0
Inactivity rate	47.4	-0.7	-1.8
Informal employment rate	20.3	-0.1	0.6
<b>Male</b>			
Activity rate	61.1	0.2	2.2
Employment rate	49.8	-0.7	1.6
Unemployment rate	18.5	1.3	0.3
Inactivity rate	38.9	-0.2	-2.2
<b>Female</b>			
Activity rate	44.7	1.2	1.4
Employment rate	35.9	0.4	1.3
Unemployment rate	19.6	1.2	-0.5
Inactivity rate	55.3	-1.2	-1.4

**Table 2** Main contingents of labour force by sex, population aged 15 to 24, Q1 2016

	I quarter 2016	Changes relative to previous quarter		Changes relative to same quarter of 2015	
	(in thousand)	(in thousand)	%	(in thousand)	%
<b>Total</b>	763.8	-4.8	-0.6	-27.3	-3.5
Active	222.3	-9.8	-4.2	-2.6	-1.2
Employed	124	-3.7	-2.9	5.7	4.8
Unemployed	98.3	-6	-5.8	-8.3	-7.8
Inactive	541.5	5	0.9	-24.7	-4.4
<b>Male</b>	393.0	-2.3	-0.6	-13.1	-3.2
Active	139.1	-5.1	-3.6	4.7	3.5
Employed	82.2	-5.0	-5.8	9.0	12.3
Unemployed	56.9	-0.1	-0.2	-4.3	-7.0
Inactive	253.9	2.8	1.1	-17.8	-6.6
<b>Female</b>	370.8	-2.4	-0.7	-14.2	-3.7
Active	83.2	-4.6	-5.2	-7.3	-8.1
Employed	41.8	1.3	3.2	-3.3	-7.3
Unemployed	41.4	-5.9	-12.5	-4	-8.9
Inactive	287.6	2.2	0.8	-6.8	-2.3

**Table 2a** Rates of activity, employment, unemployment and inactivity by sex, population aged 15 to 24, Q1 2016

	I quarter 2016	Changes relative to previous quarter	Changes relative to same quarter of 2015
	(%)	p.p.	
<b>Total</b>			
Activity rate	29.1	-1.1	0.7
Employment rate	16.2	-0.4	1.3
Unemployment rate	44.2	-0.7	-3.2
Inactivity rate	70.9	1.1	-0.7
<b>Male</b>			
Activity rate	35.4	-1.1	2.3
Employment rate	20.9	-1.1	2.9
Unemployment rate	40.9	1.4	-4.6
Inactivity rate	64.6	1.1	-2.3
<b>Female</b>			
Activity rate	22.4	-1.1	-1.1
Employment rate	11.3	0.4	-0.4
Unemployment rate	49.7	-4.1	-0.4
Inactivity rate	77.6	1.1	1.1
NEETs (15-24)	19.0	-0.8	-1.6
Early school leaving (18-24)	6.6	0.1	-1.6

**Table 3** Employed persons aged 15 and over by sex and region, Q1 2016

	I quarter 2016	Changes relative to previous quarter		Changes relative to same quarter of 2015	
	(in thousand)	(in thousand)	%	(in thousand)	%
<b>Employed - total</b>	2570.7	-10.1	-0.4	66.6	2.7
<b>Sex</b>					
Male	1449.4	-21.3	-1.5	35.1	2.5
Female	1121.3	11.2	1.0	31.4	2.9
<b>Region</b>					
Beogradski Region	617.1	6.5	1.1	14.7	2.4
Region Vojvodine	668.3	-31.9	-4.6	-6.4	-1.0
Region Šumadije i Zapadne Srbije	756.5	17.8	2.4	25.5	3.5
Region Južne i Istočne Srbije	528.8	-2.5	-0.5	32.7	6.6
Region Kosovo i Metohija	...	...	...	...	...

**Table 4** Formally / informally employed persons aged 15 and over, Q1 2016

	I quarter 2016	Changes relative to previous quarter		Changes relative to same quarter of 2015	
	(in thousand)	(in thousand)	%	(in thousand)	%
<b>Employed persons</b>	2570.7	-10.1	-0.4	66.6	2.7
Formally employed	2048.7	-4.8	-0.2	38.2	1.9
- Formally employed, excl. agriculture	1830.0	-7.6	-0.4	28.7	1.6
- Formally employed in agriculture *	218.7	2.8	1.3	9.5	4.5
Informally employed	522.0	-5.3	-1.0	28.4	5.8
- Informally employed, excl. agriculture	171.1	-12.2	-6.7	-5.6	-3.2
- Informally employed in agriculture	350.9	6.9	2.0	34	10.7
	%	(p.p.)			
Rate of informal employment (total)	20.3		-0.1		0.6
Rate of informal employment, excl. agriculture	8.5		-0.5		-0.4

\* **Employment in agriculture** comprises the whole section of Agriculture, Forestry and Fishers, as well as a part of the section of Households producing goods and services for own needs referring to agriculture.



**Table 5** Unemployed persons aged 15 and over, by sex and region, Q1 2016

	I quarter 2016	Changes relative to previous quarter		Changes relative to same quarter of 2015	
	(in thousand)	(in thousand)	%	(in thousand)	%
<b>Unemployed - total</b>	602.2	47.4	8.5	14.7	2.5
<b>Sex</b>					
Male	328.8	24.1	7.9	15.1	4.8
Female	273.3	23.3	9.3	-0.4	-0.2
<b>Region</b>					
Beogradski Region	159.4	19.5	13.9	9.4	6.3
Region Vojvodine	158.7	26.6	20.1	11.0	7.5
Region Šumadije i Zapadne Srbije	150.1	-10.1	-6.3	-14.1	-8.6
Region Južne i Istočne Srbije	134.0	11.5	9.4	8.4	6.6
Region Kosovo i Metohija	...	...	...	...	...
	%	(p.p.)			
<b>Long-term unemployment rate</b>	12.2		-0.4		1.9

**Table 6** Inactive population aged 15 and over, by sex and region, Q1 2016

	I quarter 2016	Changes relative to previous quarter		Changes relative to same quarter of 2015	
	(in thousand)	(in thousand)	%	(in thousand)	%
<b>Inactive - total</b>	<b>2858.2</b>	<b>-45.5</b>	<b>-1.6</b>	<b>-131.4</b>	<b>-4.4</b>
<b>Sex</b>					
Male	1130.5	-6.6	-0.6	-73.8	-6.1
Female	1727.7	-38.9	-2.2	-57.6	-3.2
<b>Region</b>					
Beogradski Region	657.7	-25.7	-3.8	-22.3	-3.3
Region Vojvodine	788.8	2.9	0.4	-19.4	-2.4
Region Šumadije i Zapadne Srbije	775.8	-10.8	-1.4	-31.1	-3.9
Region Južne i Istočne Srbije	636	-12	-1.8	-58.6	-8.4
Region Kosovo i Metohija	...	...	...	...	...

**Table 7** Main contingents of labour force by region and age groups, Q1 2016

	Total	Srbija – North		Srbija – South		
		Beogradski Region	Region Vojvodine	Region Šumadije i Zapadne Srbije	Region Južne i Istočne Srbije	Region Kosovo i Metohija
		(in thousand)				
<b>Population aged 15+</b>	<b>6031.1</b>	<b>1434.2</b>	<b>1615.7</b>	<b>1682.4</b>	<b>1298.8</b>	...
Active	3172.9	776.5	826.9	906.6	662.8	...
Employed	2570.7	617.1	668.3	756.5	528.8	...
Unemployed	602.2	159.4	158.7	150.1	134	...
Inactive	2858.2	657.7	788.8	775.8	636	...
		%				
Activity rate	52.6	54.1	51.2	53.9	51.0	...
Employment rate	42.6	43.0	41.4	45.0	40.7	...
Unemployment rate	19.0	20.5	19.2	16.6	20.2	...
Inactivity rate	47.4	45.9	48.8	46.1	49.0	...
		(in thousand)				
<b>Young population (15–24)</b>	<b>763.8</b>	<b>167.3</b>	<b>207.6</b>	<b>220.5</b>	<b>168.4</b>	...
Active	222.3	48.6	66.5	59.6	47.6	...
Employed	124	25.7	34.9	35	28.4	...
Unemployed	98.3	22.9	31.6	24.6	19.2	...
Inactive	541.5	118.7	141.1	160.8	120.8	...
		%				
Activity rate	29.1	29.1	32.0	27.1	28.3	...
Employment rate	16.2	15.4	16.8	15.9	16.9	...
Unemployment rate	44.2	47.1	47.5	41.3	40.3	...
Inactivity rate	70.9	70.9	68.0	72.9	71.7	...
		(in thousand)				
<b>Working – age population (15–64)</b>	<b>4701.4</b>	<b>1132.6</b>	<b>1275.8</b>	<b>1307</b>	<b>985.9</b>	...
Active	3049.7	765.6	812.5	845.2	626.4	...
Employed	2448.4	607	653.8	695.1	492.5	...
Unemployed	601.3	158.7	158.7	150.1	133.9	...
Inactive	1651.7	367	463.3	461.8	359.5	...
		%				
Activity rate	64.9	67.6	63.7	64.7	63.5	...
Employment rate	52.1	53.6	51.2	53.2	50.0	...
Unemployment rate	19.7	20.7	19.5	17.8	21.4	...
Inactivity rate	35.1	32.4	36.3	35.3	36.5	...