

# IFP/CRISIS Structure and Focal Points



## Crisis Response and Reconstruction



# IFP/CRISIS



# IFP/CRISIS Network



*Unified multidisciplinary response involving:*

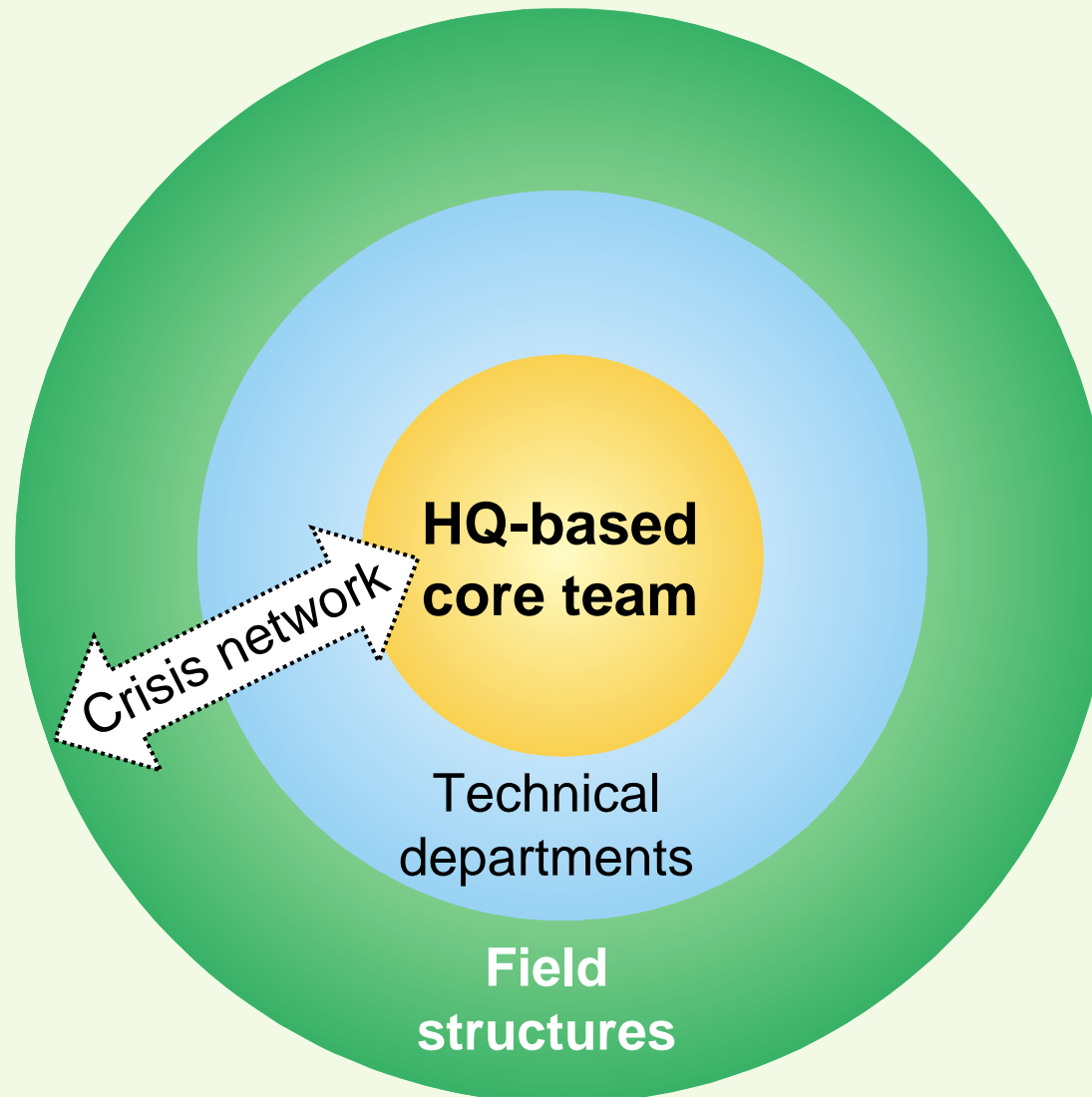
) Small HQ core group



) Designated Crisis Focal Points (DCFPs) in headquarters technical departments, Regional Offices, MDTs and Area Offices



# Structure of IFP/CRISIS Network



# IFP/CRISIS Core Team

## *Some Key Responsibilities*

- ) Spearhead, mobilize and coordinate ILO's coherent, multidisciplinary/intersectoral and timely response from field and headquarters
- ) Develop ILO crisis response tools, criteria and best practices
- ) Develop partnerships with key international players in crisis response
- ) Research and development of knowledge
- ) Capacity building of ILO and constituents in crisis response

# Designated Crisis Focal Points

## *Some Key Responsibilities*

- ) First point of contact between HQ and the field
- ) Promote office culture of crisis responsiveness and knowledge
- ) Maintain local library of key crisis response documents
- ) Establish local data-base of key contacts, agencies, consultants and donors
- ) Liaise with UNDAC national system and UNDMTs
- ) Participate in rapid needs assessment missions
- ) Maintain dialogue with ILO social partners, donors and NGOs in crisis response work at local levels

# MDTs and Area Offices

## *Some Key Responsibilities*

- ) Crisis early warning and collection of political intelligence on countries at risk in region/sub-region
- ) Participate in rapid needs assessment and programme formulation missions
- ) Mainstream crisis preparedness and response into workplans, resource allocations
- ) Provide support to constituents in crisis response
- ) Identify potential partners for ILO crisis response activities
- ) Participate in identification of local crisis response consultants and research institutions

# Regional Offices

## *Some Key Responsibilities*

- ) Provide political support (in conjunction with CABINET) for specific ILO crisis response
- ) Represent ILO and its interests in relevant regional fora on crisis issues and mobilization of human and financial resources in collaboration with the relevant MDTs, Area Offices and the IFP/CRISIS core team
- ) Ensure consideration of regional dimensions of crises in ILO's crisis response