



The background of the slide features a large, semi-transparent watermark of the International Labour Organization (ILO) logo. The logo consists of a gear with a vertical 'I' and a horizontal 'L' in the center, surrounded by a laurel wreath. The entire graphic is set against a background of a blue sky with white clouds.

# **ILO Committees on Occupational Safety and Health COSH**

# 1. Committee on OSH

---

- Bipartite group assisting the Office in the management of OSH
- Gives advise and informs the DG on OSH to whom he has full responsibility.





# 1. Committee on OSH

---

- Control statistical reports on accidents, incidents and professional diseases.
- Give advise on possible improvements.
- Revise regularly objectives on OSH matters.
- Build a culture on prevention of OSH at work.



## 2. Why have a committee ?

---

- Garanty that both administration and staff vues on OSH are reflected to promote and maintain the highest degree of physical, mental and social well-being of all staff members in headquarters and field offices
- Improves confidence of employees and proves that safety is taken into consideration by the employer



## 2. Why have a committee ?

---

- For every 1 EUR (or any other currency) per employee per year invested by companies in workplace prevention, companies can expect a potential economic return of 2.20 EUR (or any other currency).
- Improves quality, productivity and competitiveness.

The return on prevention:  
Calculating the costs and benefits of investments  
in occupational safety and health in companies



ASSOCIATION INTERNATIONALE DE LA SÉCURITÉ SOCIALE | AISS



# 3. ILO CONVENTIONS

---

- Convention 120
- Convention 155
- Convention 161
- Convention 167
- Convention 187



### 3. ILO IGDS

---

- IGDS 48
- IGDS 286
- IGDS 385





## 4. LABADMIN OSH TOOLS

---



## 4. ILO-OSH 2001

---



# 5. LABADMIN OSH TOOLS

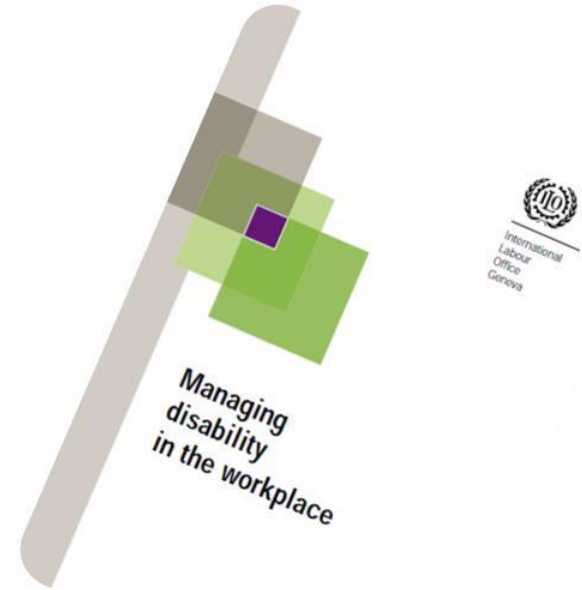
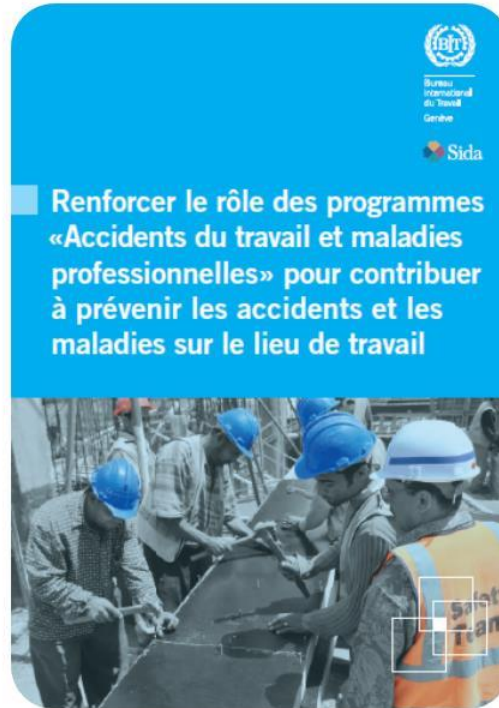
---





# 5. LABADMIN OSH TOOLS

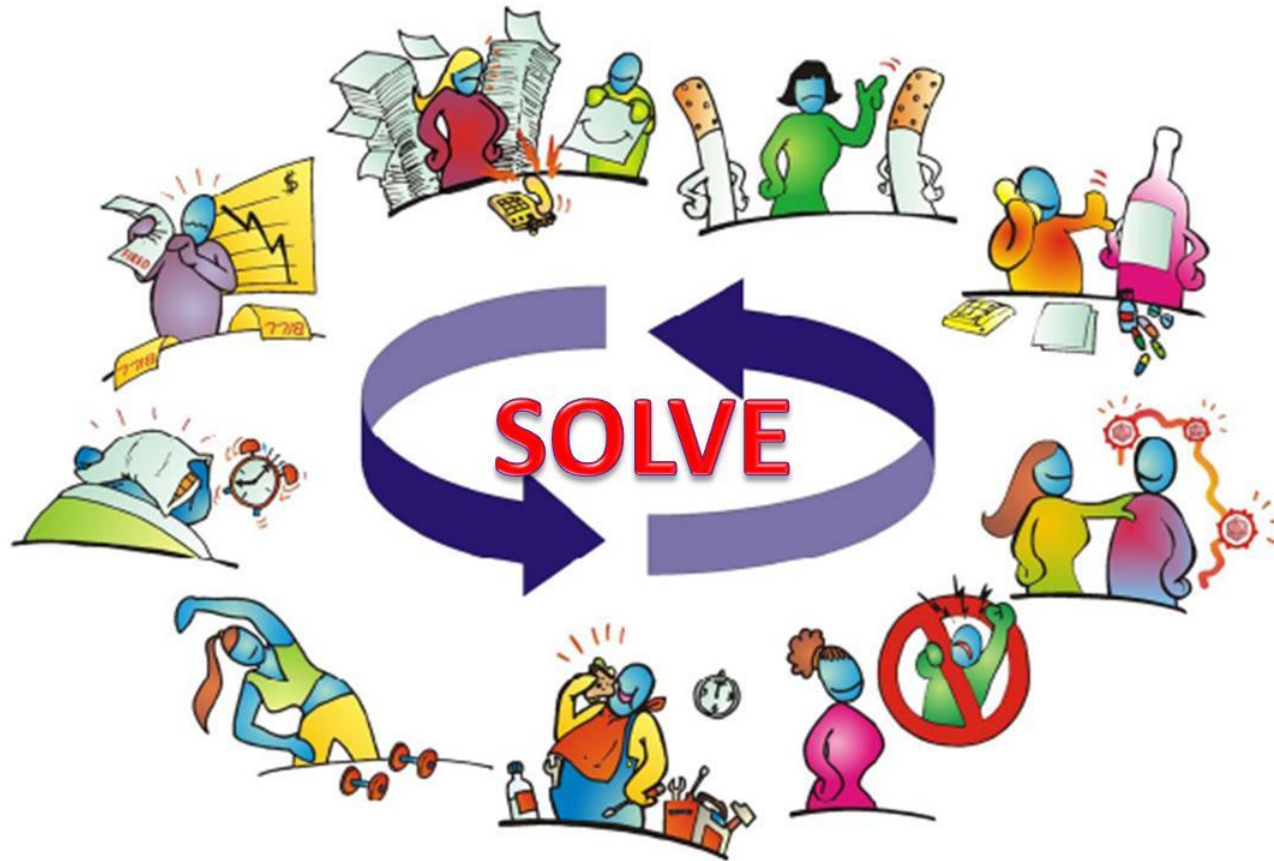
---





## 5. LABADMIN OSH TOOLS

---



**Health Promotion**



## 5. LABADMIN OSH TOOLS

---



**ILO INTERNATIONAL TRAINING  
CENTER TURIN**



## 6. OSH COMMITTEES

---





# 7. NEXT STEPS

---

- NETWORK
- TRAINING
- INTEGRATE OR IMPROVE OSH PREVENTION
- ASSISTANCE





# 7. NEXT STEPS

---





# 7. NEXT STEPS

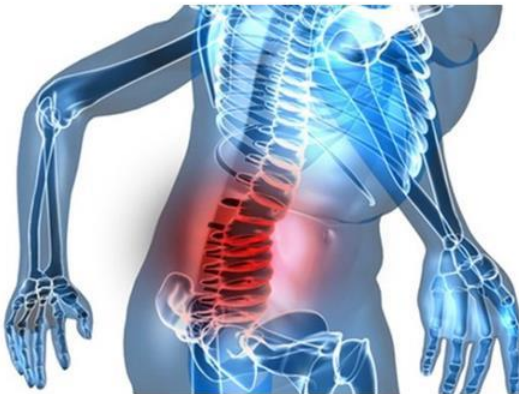
---





## 7. NEXT STEPS

---



# BUILDING A CULTURE OF PREVENTION ON OSH WITHIN THE ILO





# Thank you kindly

**Eloy Alonso-Maestre**  
**OSHcoordinator@ilo.org**

