

# World Safety and Health at Work Day 2015

Dr. (Ms) Gan Siok Lin  
Executive Director

Workplace Safety and Health Institute  
Ministry of Manpower, Singapore



MINISTRY OF  
MANPOWER

A Great Workforce A Great Workplace



Source: <http://www.ilo.org/safework/events/safeday/lang--en/index.htm>

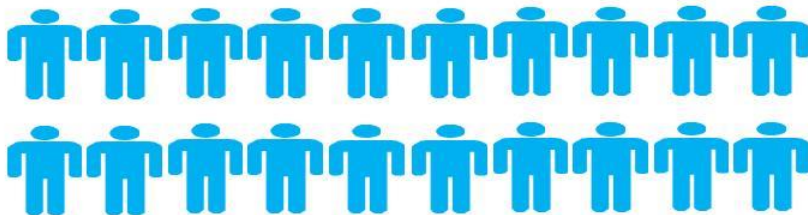
# High Costs of Work-Related Accidents

2.3 million deaths



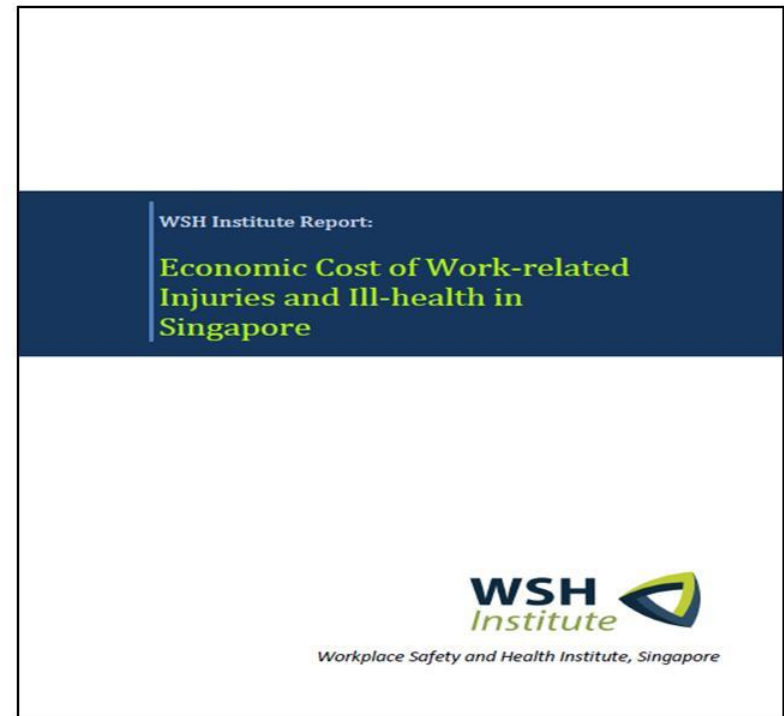
Work  
Accidents

Work-related  
Illnesses



Source: [http://www.ilo.org/wcmsp5/groups/public/---ed\\_protect/---protrav/---safework/documents/publication/wcms\\_301214.pdf](http://www.ilo.org/wcmsp5/groups/public/---ed_protect/---protrav/---safework/documents/publication/wcms_301214.pdf)

**S\$10.45 Billion  
Economic Cost**



Source: <https://www.wsh-institute.sg/files/wshi/upload/cms/file/Economic%20Cost%20of%20Work-related%20Injuries%20and%20Ill-health%20in%20Singapore.pdf>

# Singapore's Commitment to OSH



Lee Hsien Loong ✓

April 26, 2013 · 🌐

This Sunday (28 April) is World Day for Safety and Health at Work. Singapore takes occupational safety and health very seriously. I have taken a personal interest in this matter, because it troubles me that our accident and fatal injury rates are higher than they could be. Every injury means pain and suffering for a worker, every death is a family distraught, bereft, and deprived of a breadwinner. It is our duty to reduce these to the absolute minimum, by instilling safety consciousness and safe work practices in workplaces.

Over the past decade, we have reduced the rate of fatal workplace injuries by more than half. We will continue to raise safety and health standards in our workplaces, to safeguard our workers' well-being. I was happy to share our experience in my Message to the [International Labour Organization \(ILO\)](#) to commemorate World Day. — LHL

**WORLD DAY FOR SAFETY AND HEALTH AT WORK:  
SINGAPORE REAFFIRMS ITS COMMITMENT TO  
SAFETY AND HEALTH**

NEWS.GOV.SG

Like · Comment · Share

👍 Julie O'Loughlin, Steve Thurley, Steven Lai and 837 others like this.

🔗 36 shares



*- Prime Minister Lee Hsien Loong at the  
2013 National Workplace Safety and  
Health Campaign  
20 May 2013*



# Involvement from All Stakeholders

OCCUPATIONAL SAFETY AND  
HEALTH DIVISION (OSHD)



MINISTRY OF  
MANPOWER

WORKPLACE SAFETY AND  
HEALTH COUNCIL



WSHCOUNCIL

WORKPLACE SAFETY AND  
HEALTH INSTITUTE

WSH  
*Institute*



## TRIPARTITE PARTNERS:

NATIONAL TRADES UNION  
CONGRESS

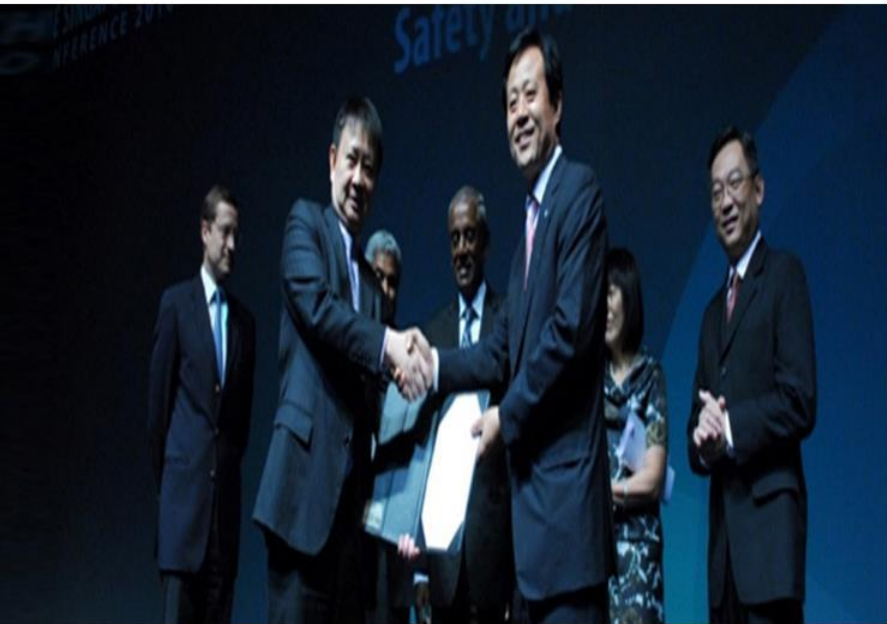
**ntuc**

National Trades Union Congress

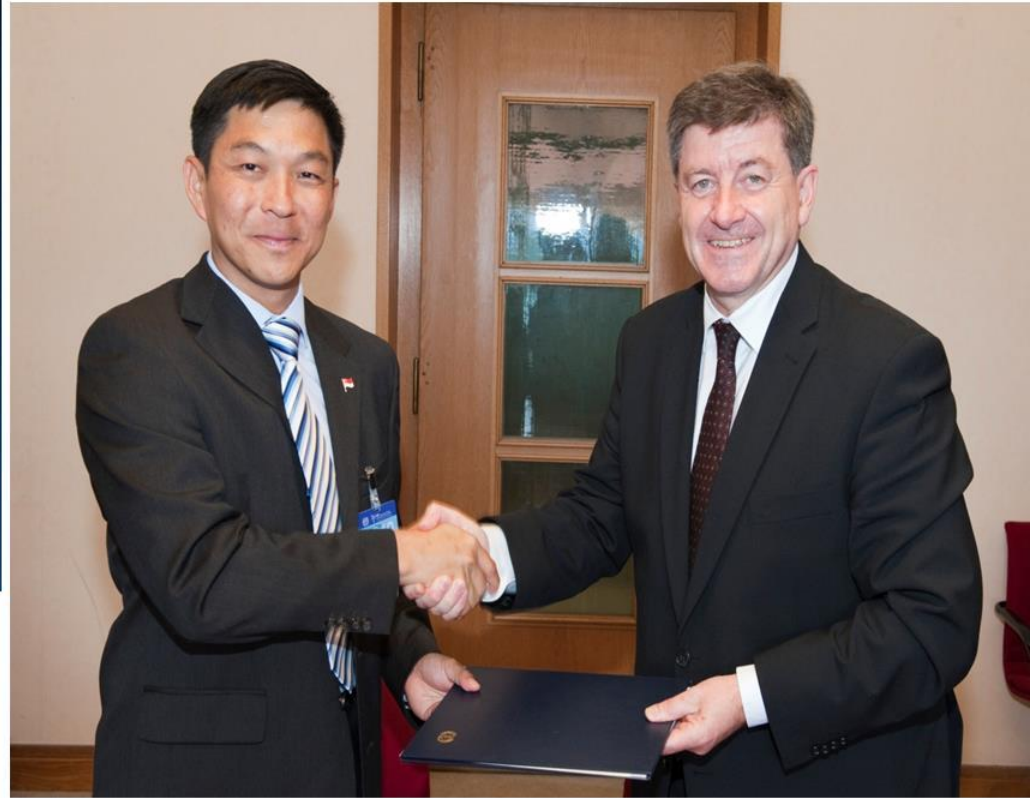
SINGAPORE NATIONAL  
EMPLOYERS FEDERATION

**SNEF**

# Singapore's Global Commitment



Signing of Seoul Declaration, Reference:  
<https://www.wshc.sg/wps/portal/wshc> - Singapore  
WSH> The Singapore WSH Conference



Signing of ILO Convention 187,  
Reference:<http://www.mom.gov.sg/newsroom/Pages/PressReleasesDetail.aspx?listid=433>

# Key Players in Singapore

## Progressing WSH in Singapore



**OSHD**

Occupational Safety & Health Division

### REGULATOR

Legislation, Policies,  
Compliance Assistance &  
Enforcement



**WSHC**

Workplace Safety & Health Council

### INDUSTRY PARTNER

Educate & Engage  
Stakeholders, Set  
Standards, Promote WSH



**WSHI**

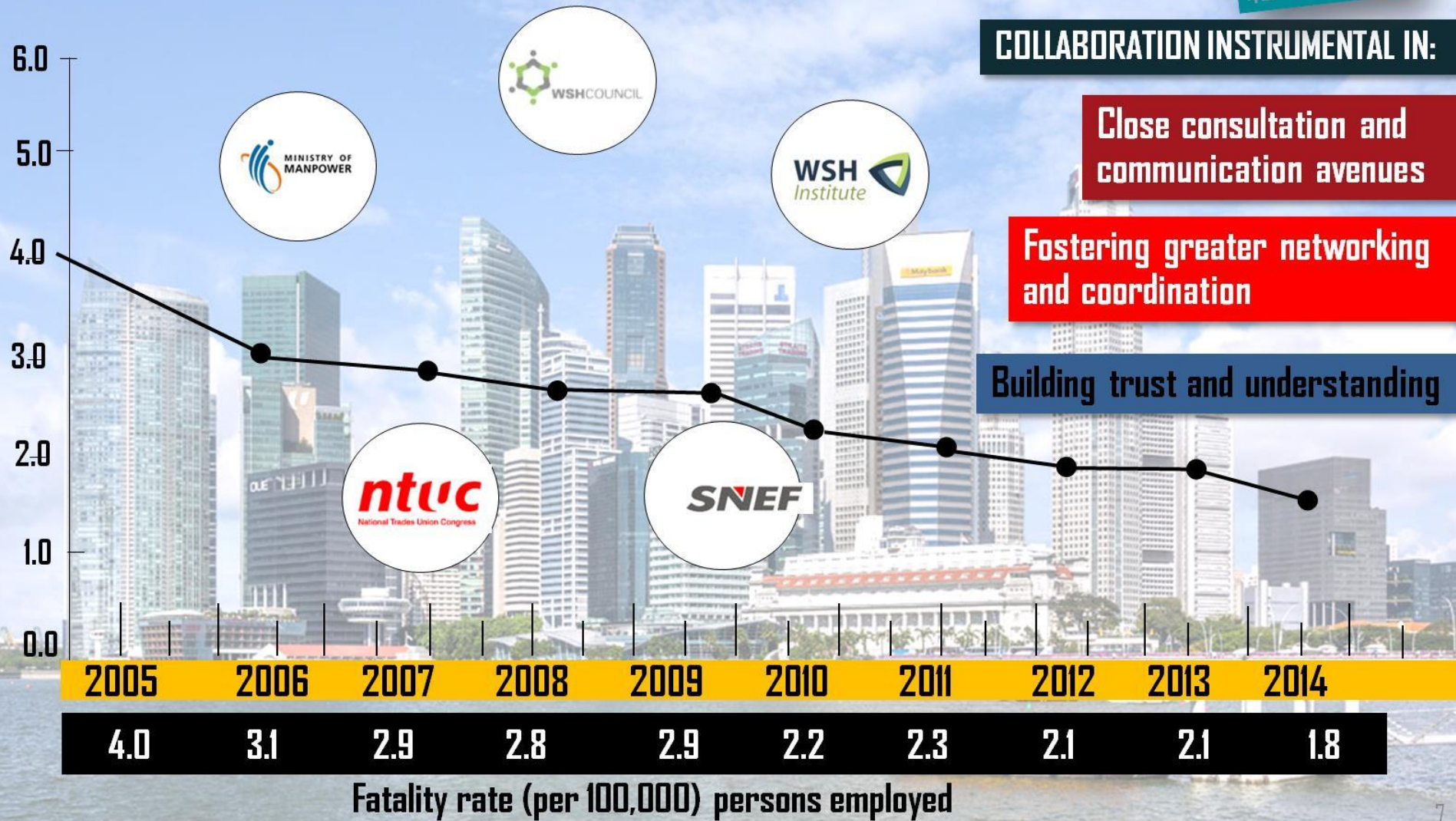
Workplace Safety & Health Institute

### THINK TANK

Provide Insights to Chart  
New Grounds for WSH  
Excellence and  
Innovation



# Workplace Fatality Rate



# What is Vision Zero?

VISION  
ZERO

Zero fatality  
Zero injury  
Zero illness  
Zero workplace accident  
Zero workplace incident  
Zero dangerous occurrence  
Zero unsafe act, practice, condition of work

Zero  
HARM

Zero Harm

Zero  
Incident

Zero  
Accident



# Launch of Vision Zero Movement



“Vision Zero requires the adoption of a mindset where all injuries and ill health arising from work are preventable. The pursuit of Vision Zero is not about focusing solely on meeting the target of zero accidents. A Vision Zero-minded person would strive to prevent all work injuries and ill health without compromise.”

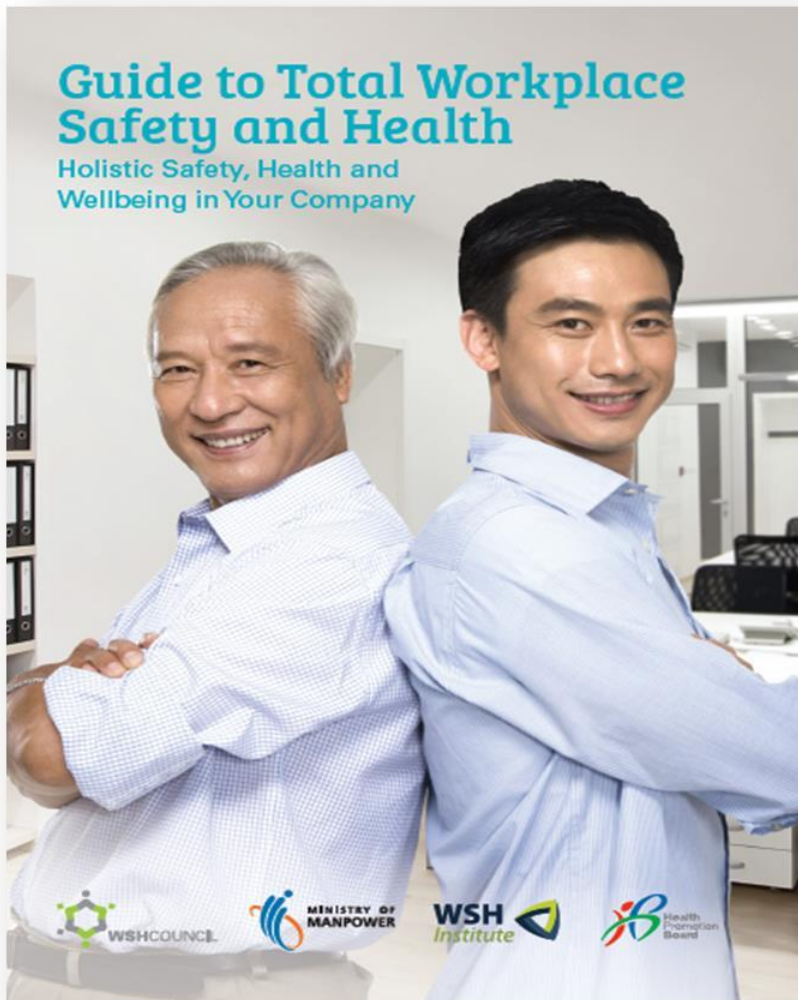
# CultureSAFE



- 5 EXEMPLARY** • Internalisation of WSH as a non-negotiable value.
- 4 PROGRESSIVE** • WSH ownership is pervasive throughout the company.
- 3 PROACTIVE** • Employees are mindful of WSH issues in their daily work.
- 2 PARTICIPATIVE** • Employees are involved and participate in WSH initiatives.
- 1 REACTIVE** • Top-down Management and Direction of WSH Initiatives.

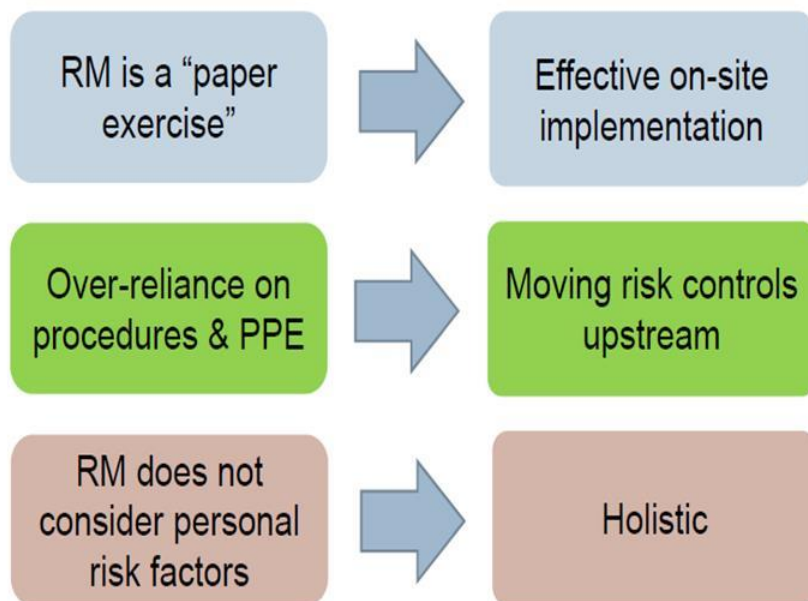


# Total WSH





# Enhanced Risk Management



5

Deliver Excellence in WSH Management System

4

Acquire Capability in Managing WSH Systematically

3

Implement Risk Management

2

Acquire Risk Management Capability

1

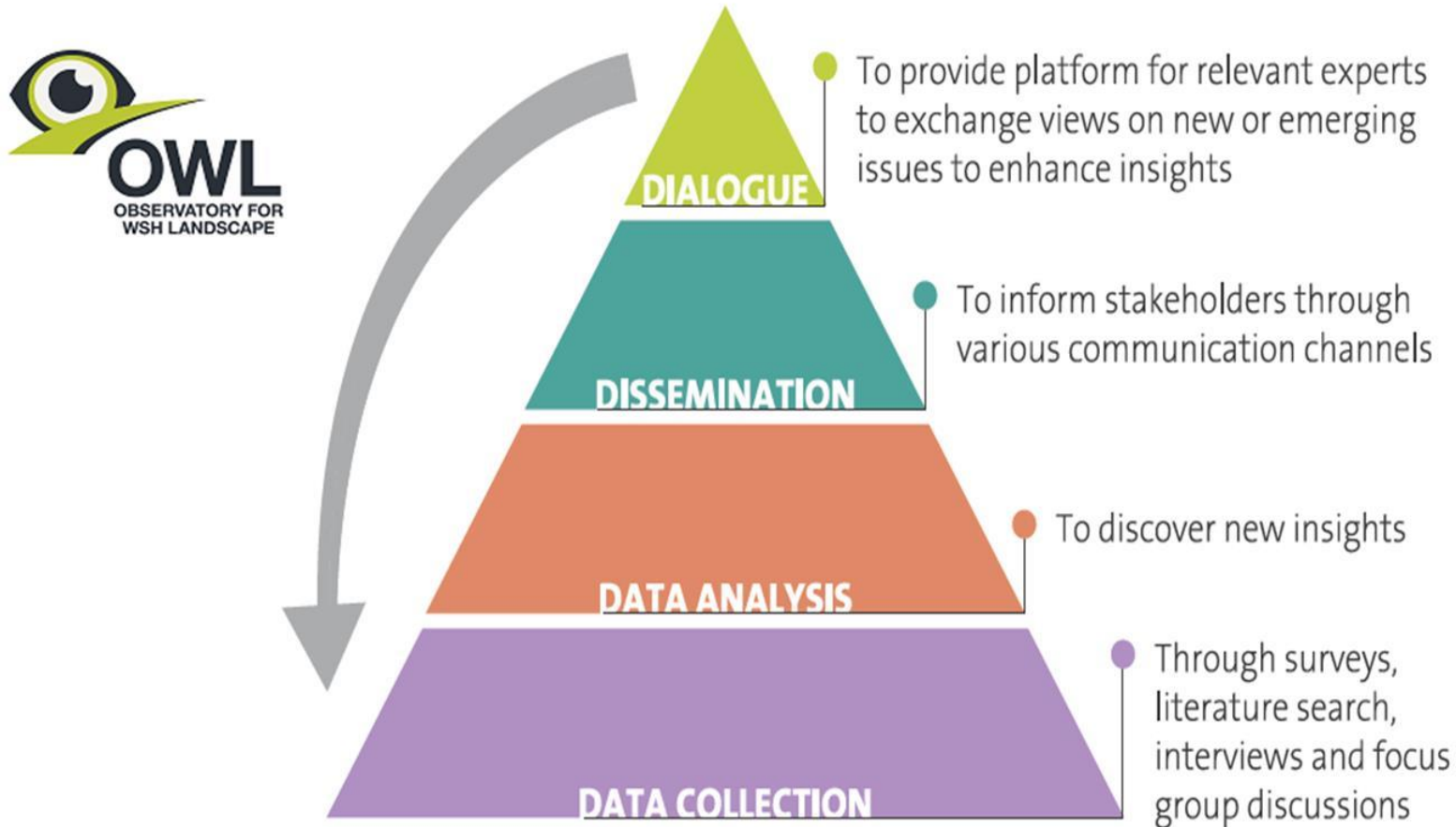
Demonstrate Top Management Commitment



# ASEAN-OSHNET



# Observatory for WSH Landscape - OWL



*Figure 1: The OWL 4D Framework*



# Supporting SafeDay 2015 – NWSH Campaign



*I can Prevent all injuries &  
Be healthy at work*

A quality life starts by being safe and healthy at work.  
Visit [www.wshc.sg/nationalcampaigns](http://www.wshc.sg/nationalcampaigns)

HOW YOU  
WORK IS  
HOW  
YOU LIVE



**3-6 September 2017**  
**Marina Bay Sands, Singapore**

[www.safety2017singapore.com](http://www.safety2017singapore.com)

