



International
Labour
Organization

Introduction
to the
Governing Body

May 2008

Introduction
to the
Governing Body

International Labour Office Geneva
May 2008

Contents

	<i>Page</i>
The Governing Body	1
The Officers of the Governing Body	3
Committees, subcommittees and working party of the Governing Body	5
Committee on Freedom of Association (CFA)	6
Programme, Financial and Administrative Committee (PFA)	7
Building Subcommittee (PFA/BS)	8
Information and Communication Technology Subcommittee (PFA/ICTS)	8
Committee on Legal Issues and International Labour Standards (LILS)	9
Committee on Employment and Social Policy (ESP)	10
Committee on Sectoral and Technical Meetings and Related Issues (STM)	11
Committee on Technical Cooperation (TC)	12
Subcommittee on Multinational Enterprises (MNE)	13
Working Party on the Social Dimension of Globalization (WP/SDG)	14
Government group	15
Regional coordinators	15

Appendices

I. Information on Governing Body elections: Government electoral college 2008–11	17
II. Examination of representations under article 24 of the Constitution of the ILO	18
III. Chairpersons of the Governing Body of the ILO	19

The Governing Body

The Governing Body is the executive council of the International Labour Office. Its period of office is three years. It meets twice a year for a full session (in March and November) and once for a one-day session (in June, after the International Labour Conference). With the exception of the June session, the plenary sessions of the Governing Body last up to three-and-a-half days, and are preceded by a half day of group meetings. The committees meet during the previous one-and-a-half weeks at ordinary sessions, and during the previous two-and-a-half weeks at the spring sessions when the programme and budget proposals are examined. The Committee on Freedom of Association meets immediately before the other Committees.

Functions

- Elects the Director-General
- Directs and monitors the work of the Office and the Director-General in the discharge of their constitutional functions directly or through the various committees it may establish
- Adopts the draft programme and budget for submission to the Conference
- Determines the agenda of the Conference and ensures adequate preparation
- Deals with constitutional procedures (articles 24 and 26 of the Constitution of the ILO) for the application of ratified Conventions (see Appendix I)
- Discharges the responsibility entrusted to it in the follow-up to the ILO Declaration on Fundamental Principles and Rights at Work (see Appendix II)
- Discharges all other responsibilities entrusted to it through the ILO Constitution and practice including reforms of the ILO and its organs
- Authorizes the participation of representatives of official international organizations and international non-governmental organizations at the Conference and other ILO meetings
- Approves the agenda and, where applicable, the composition of regional, sectoral and expert meetings

Composition

According to article 7 of the Constitution of the ILO and articles 49 and 50 of the Standing Orders of the International Labour Conference, the Governing Body is composed of 56 regular members and 66 deputy members.¹

¹ This composition is the result of an amendment to the Standing Orders of the Conference, adopted by the Conference in June 1995, pending the entry into force of the Instrument for the Amendment of the Constitution of the ILO, 1986, which would double the size of each group and eliminate non-elective seats.

	28 Government regular members	
14 Worker regular members		14 Employer regular members
	28 Government deputy members	
19 Worker deputy members		19 Employer deputy members

Appointment

Of the 28 Government regular members, ten are States of chief industrial importance which hold non-elective seats.² The remaining 18 Government regular members and the 28 deputy members are appointed by the Government electoral college on the basis of geographical distribution (see Appendix I). This electoral college is composed of all Government delegates to the Conference, except the ten members of chief industrial importance and those governments that have lost the right to vote.

The Employers' and Workers' electoral colleges consist of the Employers' and Workers' delegates to the Conference respectively, excluding the delegates from States that have lost the right to vote. Each group elects by name 14 persons as regular members and 19 persons as deputy members of the Governing Body.

Agenda

The agenda of the Governing Body is drawn up by the Officers of the Governing Body³ with the assistance of the Director-General. It includes standing items and any item which the Governing Body decided to include at a previous session. With the consent of the Officers of the Governing Body, urgent matters may be added to the agenda of any session.

Decision-making

Decisions are generally taken by consensus, votes being very rare in the Governing Body. Such decisions are taken on the basis of:

- recommendations contained in the document already submitted to it on items placed on the agenda;
- recommendations made by its various committees; and
- individual motions or resolutions submitted under article 5.6 of the Standing Orders of the Governing Body in connection with an item on the agenda.

² At present, Brazil, China, France, Germany, India, Italy, Japan, Russian Federation, United Kingdom and the United States.

³ See article 3.1 of the Standing Orders of the Governing Body.

The Officers of the Governing Body

Election

The three Officers of the Governing Body, a Chairperson and two Vice-Chairpersons, are elected for a period of one year. The Chairperson is usually chosen from among the Government members⁴ following a regional rotation.

The Employer and Worker Vice-Chairpersons are chosen by their respective groups. They can be re-elected in subsequent years.

Functions

- Adopts the agenda of the Governing Body.
- Examines, prior to their consideration by the Governing Body, the:
 - receivability of representations made by employers' or workers' organizations under article 24 of the Constitution of the ILO and/or of complaints filed by member States under article 26 of the Constitution of the ILO;
 - agenda, composition formula and composition of sectoral or other expert meetings;
 - requests for participation of representatives of official international organizations and international non-governmental organizations at the Conference;
 - participation of the ILO in major events of the United Nations system;
 - programme of meetings and of symposia, seminars and similar meetings to be organized by the ILO, either independently or jointly with other organizations.
- Authorizes the participation of international non-governmental organizations at ILO meetings.
- Deals with all other items which call for preliminary consultation and immediate decision.

Committees and subcommittees

The Governing Body fulfils its functions through:

- the Programme, Financial and Administrative Committee provided for in the Standing Orders of the Governing Body (article 4.1);

⁴ Exceptions to this practice were as follows: Mr Joseph Morris, Worker member, United Kingdom (1977–78), Mr Jean-Jacques Oechslin, Employer member, France (1985–86), Mr Gerd Muhr, Worker member, Germany (1990–91) and Lord Brett, Worker member, United Kingdom (2002–03). See Appendix III for the list of Chairpersons of the Governing Body since 1919.

- the Committee on Freedom of Association;
- the committees which were established upon the recommendation of its Working Party on Improvements in the Functioning of the Governing Body (May 1993) and subsequent Governing Body decisions in respect of its structure;
- the subcommittees and working parties it has set up (see the following page).

Agenda of the committees

The agenda of the committees is drawn up by:

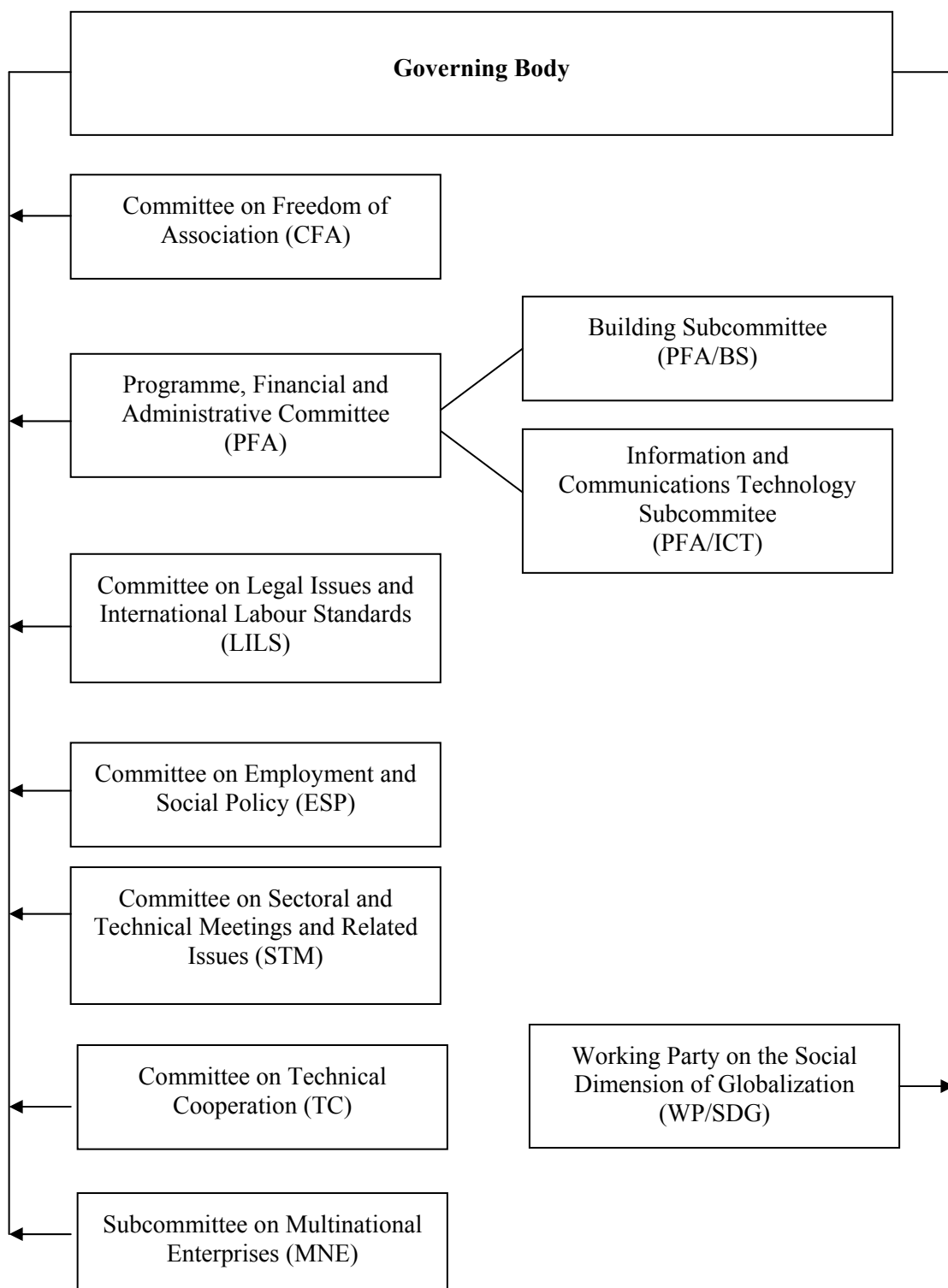
- the committees themselves;
- the Governing Body.

Decision-making

The committees report to the Governing Body through a report which contains recommendations and a summary of the debate which took place in these bodies. The Subcommittee on Multinational Enterprises and the Working Party on the Social Dimension of Globalization also report directly to the Governing Body. The recommendations contained in the reports become decisions only after their adoption by the Governing Body. All committee reports, with the exception of that of the Committee on Freedom of Association, are normally adopted without introduction and discussion.

- The members of the Governing Body have the right to make amendments to their own interventions and to submit, in accordance with article 5.6 of the Standing Orders of the Governing Body, proposals for amendments to the points for decision.
- The Chairperson is authorized to permit individual interventions and allow a discussion in three particular cases:
 - firstly, if the Committee could not reach agreement on a particular point;
 - secondly, if the Officers of the Governing Body unanimously recognize that an issue raised in a report warrants a discussion in the Governing Body proper;
 - thirdly, if either the spokesperson of one of the groups or at least 14 members of the Governing Body formally request the reopening of the discussion on a particular item in the report.

Committees, subcommittees and working party of the Governing Body



Committee on Freedom of Association (CFA)

Officers

The Officers of the CFA are:

The Chairperson

An independent expert appointed by the Governing Body.

An Employer spokesperson and a Worker spokesperson

Appointed by their respective groups.

Composition

Appointed for the term of office of the Governing Body (three years).

- Three Government regular members and three deputy members.
- Three Employer regular members (including the spokesperson) and three deputy members.
- Three Worker regular members (including the spokesperson) and three deputy members.

All are appointed by the Governing Body upon recommendation of their respective groups and serving in their personal capacity.

There are no substitute members in this Committee.

Scope and mandate

The Committee on Freedom of Association examines complaints and representations alleging violation of freedom of association.

It meets at every session of the Governing Body and prior to the Conference each year.

The meetings of the Committee are private.

Programme, Financial and Administrative Committee (PFA)

Officers

The Officers of the PFA Committee are:

The Chairperson

The Chairperson of the Governing Body is ex officio Chairperson of the PFA Committee.

An Employer Vice-Chairperson and a Worker Vice-Chairperson

Appointed by their respective groups.

Composition

Appointed for the term of office of the Governing Body.

Open-ended (i.e. any Governing Body member may register).

Scope and mandate

The PFA Committee is responsible for programming financial and general administrative matters and for personnel questions.

All questions concerning the allocation of expenses among member States are handled by the Government members of the Committee, who meet in private sitting, and their recommendations are submitted directly to the Governing Body under the item on its agenda concerning the reports of the PFA Committee.

The PFA Committee meets at the spring and autumn sessions of the Governing Body and on the occasion of the Conference, if necessary.

Two subcommittees report directly to the PFA Committee.

Building Subcommittee (PFA/BS)

Officers

The Officers of the PFA/BS Committee are:

The Chairperson

An Employer Vice-Chairperson and a Worker Vice-Chairperson

Appointed from the members of the Subcommittee.

Composition

Appointed for the term of office of the Governing Body.

- Two Government regular members, and two substitute members.
- Two Employer regular members, and two substitute members.
- Two Worker regular members, and two substitute members.

Mandate

The PFA/BS Subcommittee is responsible for matters concerning ILO premises. It is convened on an ad hoc basis. The Subcommittee reports directly to the PFA Committee.

Information and Communication Technology Subcommittee (PFA/ICTS)

Officers

The Chairperson

An Employer Vice-Chairperson and a Worker Vice-Chairperson

Appointed from the members of the Subcommittee.

Composition

Appointed for the term of office of the Governing Body.

- Two Government regular members, and two substitute members.

- Two Employer regular members, and two substitute members.
- Two Worker regular members, and two substitute members.

Mandate

The PFA/ICTS Subcommittee is responsible for matters concerning information technology. It is convened at least once a year on an ad hoc basis. The Subcommittee reports directly to the PFA Committee.

Committee on Legal Issues and International Labour Standards (LILS)

Officers

The Officers of the LILS Committee are:

The Chairperson

A Government member.

An Employer Vice-Chairperson and a Worker Vice-Chairperson

Appointed by their respective groups.

Composition

Appointed for the term of office of the Governing Body.

Open-ended.

Mandate

The LILS Committee considers the matters listed below, and advises the Governing Body in respect of:

- constitutional issues, Standing Orders (International Labour Conference, Governing Body, regional meetings, sectoral meetings);
- the ILO's standard-related work and procedures, including, among other matters, the ILO's supervisory machinery generally, the approval of reports forms for ILO Conventions and Recommendations and the selection of instruments for reporting under article 19 of the ILO Constitution;
- action relating to the protection of human rights, with particular reference to the elimination of discrimination on the basis of race and sex;

- international legal instruments and judicial decisions affecting the status of the ILO's standard-setting work;
- legal agreements concluded by the ILO with other international organizations (except in the area of technical cooperation, which fall within the competence of the Committee on Technical Cooperation).

The LILS Committee meets at the spring and autumn sessions of the Governing Body.

Committee on Employment and Social Policy (ESP)

Officers

The Officers of the ESP Committee are:

The Chairperson

A Government member.

An Employer Vice-Chairperson and a Worker Vice-Chairperson

Appointed by their respective groups.

Composition

Appointed for the term of office of the Governing Body.

Open-ended.

Mandate

The ESP Committee's mandate is to consider, and advise the Governing Body on, ILO policies and activities in the fields of:

- employment, training and enterprise development, and cooperatives;
- industrial relations and labour administration;
- social protection, working conditions and environment, and social security;
- gender promotion in employment.

It also monitors the ILO's cooperation with the Bretton Woods institutions and its involvement in major United Nations systems initiatives.

The ESP Committee meets at the spring and autumn sessions of the Governing Body.

Committee on Sectoral and Technical Meetings and Related Issues (STM)

Officers

The Officers of the STM Committee are:

The Chairperson

A Government member.

An Employer Vice-Chairperson and a Worker Vice-Chairperson

Appointed by their respective groups.

Composition

Appointed for the term of office of the Governing Body.

Open-ended.

Mandate

The STM Committee considers, and advises the Governing Body on, matters relating to:

- planning, preparation and follow-up concerning meetings of experts and the ILO's sectoral meetings;
- preparation and follow-up concerning ILO technical meetings provided for in the programme and budget;
- the review of the ILO's Sectoral Activities Programme and other policy issues relating to ILO sectoral and technical meetings.

The STM Committee meets at the spring and autumn sessions of the Governing Body.

Committee on Technical Cooperation (TC)

Officers

The Officers of the TC Committee are:

The Chairperson

A Government member.

An Employer Vice-Chairperson and a Worker Vice-Chairperson

Appointed by their respective groups.

Composition

Appointed for the term of office of the Governing Body.

Open-ended.

Mandate

The TC Committee considers, and advises the Governing Body on, matters relating to ILO technical cooperation programmes under all sources of funding, and in particular:

- reviews the ILO's technical cooperation programme as a whole as well as selected programmes and themes;
- recommends priorities and provides guidance for the ILO's technical cooperation activities;
- promotes the active participation of employers' and workers' organizations in the preparation, implementation and evaluation of technical cooperation programmes and projects;
- examines action to be taken on Conference decisions concerning technical cooperation matters;
- monitors ILO technical cooperation activities in the different regions;
- considers developments in the United Nations system, affecting the ILO's technical cooperation activities, and the ILO's relations with other international organizations in the field of technical cooperation.

The TC Committee meets at the spring and autumn sessions of the Governing Body.

Subcommittee on Multinational Enterprises (MNE)

Officers

The Officers of the MNE Subcommittee are:

The Chairperson

A Government member.

An Employer Vice-Chairperson and a Worker Vice-Chairperson

Appointed by their respective groups.

Composition

Appointed for the term of office of the Governing Body.

- Eight Government regular members (including the Chairperson), and eight substitute members.
- Eight Employer regular members (including the spokesperson), and eight substitute members.
- Eight Worker regular members (including the spokesperson), and eight substitute members.

Mandate

The MNE Subcommittee:

- examines the effect given to the Tripartite Declaration of Principles concerning Multinational Enterprises and Social Policy (in particular the triennial review of follow-up on the Declaration);
- considers requests for interpretation of the Tripartite Declaration; and
- monitors activities of the ILO and other organizations regarding multinational enterprises, it being understood that other aspects of the activities of multinational enterprises may, if necessary, be examined by other committees or working parties.

The MNE Subcommittee reports directly to the Governing Body.

It meets at the spring session of the Governing Body, but in recent years has also met at the autumn session.

Working Party on the Social Dimension of Globalization (WP/SDG)

Officers

The Officers of the WP/SDG are:

The Chairperson

The Chairperson of the Governing Body.

An Employer Vice-Chairperson and a Worker Vice-Chairperson

The Employer and Worker Vice-Chairpersons of the Governing Body.

Composition

The Governing Body convenes as a Committee of the Whole.⁵

Scope and mandate

The Governing Body decided at its 260th Session (June 1994) to set up a working party under the name “Working Party on the Social Dimensions of the Liberalization of International Trade”. At its 277th (March 2000) Session, the Governing Body modified the title of the Working Group as stated above, in order to better reflect the direction in which its mandate had evolved. However, it was understood that this concept encompassed, *inter alia*, the social aspects of the liberalization of trade.

At its 280th (March 2001) and 281st (June 2001) Sessions, the Governing Body proposed that the future priorities of the Working Party focus on:

- providing an international forum to discuss, gain a better understanding and deepen the knowledge base of the issues arising out of globalization, in particular its social dimensions;
- developing an integrated approach to economic and social policies with particular attention to the interaction between the global economy and the world of work;
- promoting dialogue and consensus building among the ILO’s tripartite constituents and with other multilateral institutions.

The Working Party operates within the framework of the ILO’s strategic objectives and its Decent Work Agenda. It ensures transparency and tripartite control in the implementation of its objectives and keeps in sight the importance of the development dimension of its work. In order to strengthen its technical capabilities, it may organize hearings, workshops or ad hoc meetings on important issues, and may commission further

⁵ Article 4.3 of the Standing Orders of the Governing Body.

research. The Working Party also ensures follow-up to the report of the World Commission on the Social Dimension of Globalization, *A fair globalization: Creating opportunities for all*.

The Working Party usually meets twice a year.

Government group

Composition

Open to all government members.

Officers

Chairperson.

Vice-Chairperson.

Rotation of the Officers

It is a practice, and not a rule, for the Chairperson and Vice-Chairperson to be nominated for one year on the basis of regional rotation in alphabetical order.

Functions

- Coordinates the selection of chairpersons for the various committees and subcommittees of the Conference, the Governing Body and other bodies of the ILO, including committees set up to examine representations and complaints under articles 24 and 26 of the ILO Constitution;
- Deals with all other items which require coordination among Government members, including establishing group positions.

Regional coordinators

Appointment and function

Regional coordinators are appointed by the members of the respective regions: Africa, Americas, Asia and the Pacific and Europe (the latter is divided into Central and Eastern Europe and Western Europe). A coordinator is also appointed for the IMEC⁶ group.

Those regional coordinators are chosen from the regular or deputy members of the Governing Body. They are usually based in their respective missions in Geneva.

⁶ Industrialized Market Economy Countries.

The functions of the regional coordinators include:

- coordinating the activities of the member States of their region during the sessions of the Governing Body and the Conference;
- providing information on the mechanisms of the Governing Body and the Conference to the members of their respective regions or group;
- coordinating the slates for membership in the Governing Body and receiving nominations for its committees;
- developing texts to recommend to the full group as possible group statements.

Appendix I

Information note on Governing Body elections: Government electoral college (2008–11)

In conformity with article 7 of the Constitution, the International Labour Conference (ILC) elects the members of the Governing Body for a three-year term. Elections are carried out by a secret ballot separately by three electoral colleges in accordance with section G of the Standing Orders of the ILC: the Government electoral college, and the two non-governmental colleges (composed respectively of all the Employers' and Workers' delegates to the Conference except those whose country has lost the right to vote, each college electing 14 regular members and 19 deputy members).

The Government electoral college consists of two Government delegates from each member State, except those which have lost the right to vote, and the ten member States of chief industrial importance who hold non-elective titular seats (**Brazil, China, France, Germany, India, Italy, Japan, Russian Federation, United Kingdom and the United States**).

Article 49 of the Standing Orders of the ILC stipulates that the Government electoral college elect 18 regular members and 28 deputy members. In accordance with a Conference decision in 1995 (when the number of deputy seats was increased from 18 to 28), the ballot papers for the Government electoral college are drawn up and dealt with in such a manner as to guarantee an overall distribution of regular and deputy seats among the regions, corresponding to that envisaged in the 1986 constitutional amendment. The practice has been for the Government electoral college as a whole to take eight votes : four for the election of regular members from each region, and four for the election of deputy members from each region.

The ballot papers for the eight votes are to be **provided to the Office by the regional coordinators** before the date decided by the Selection Committee for the Governing Body elections (foreseen for Monday 2 June 2008). Such ballot papers normally contain a number of candidates corresponding to the number of seats to be elected, as well as a list of all other member States within each region. The candidates may be agreed upon in advance by the regional groups on the basis of negotiations or established arrangements.

The following table gives a break-down of the number of seats available by region for the period 2008–11:

Regions	Regular seats		Deputy seats	Total elective seats	Total
	Non-elective	Elective			
Africa*	0	6	8	14	14
Americas*	2	5	5	10	12
Asia and the Pacific	3	4	8	12	15
Europe	5	3	7	10	15
Total	10	18	28	46	56

* Africa and the Americas share a "floating" deputy seat attributed in turn for each Governing Body term of office. Since that seat was attributed to the Americas group for the 2005–8 period of office, so it will revert to the Africa group for the 2008–11 period of office.

All countries wishing to submit candidatures for the Governing Body should contact their respective Regional Coordinator at the corresponding Permanent Mission in Geneva.

For the past four years, the Government electoral college has decided to use the electronic voting system.

Appendix II

Examination of representations under article 24 of the Constitution

(This issue is governed by a Standing Order adopted by the Governing Body) ¹

Once a representation concerning non-observance of a ratified Convention is declared receivable, the Governing Body appoints a tripartite committee, composed of one member of each group of the Governing Body, to consider it. The Government member serves as Chairperson. ²

Such a Committee may:

- communicate the representation to the government requesting it to make a statement on the subject within a specified time limit;
- invite the parties to supply additional information; and
- submit a report to the Governing Body.

In their reports, the committees:

- describe the measures taken for the examination of the representation;
- present conclusions; and
- make recommendations as to the decision to be taken.

The entire procedure under article 24 of the ILO Constitution is confidential until the adoption of the recommendation by the Governing Body.

¹ *Official Bulletin*, Vol. LXIV, 1981, Series A, No. 1.

² No representative or national of the State against which the representation has been made and no person occupying an official function in the association of employers or workers which has made the representation may be a member of such a committee.

Appendix III

Chairpersons of the Governing Body of the International Labour Office *

Mr Arthur FONTAINE	France ¹	1919–31
Mr Ernest MAHAIM	Belgium ¹	1931–32
Sir Atul CHATTERJEE	India ¹	1932–33
Mr C.V. BRAMSNAES	Denmark ²	1933–34
Mr Giuseppe de MICHELIS	Italy ¹	1934–35
Sir Walter RIDDELL	Canada ¹	1935–36
Mr Jaromir NECAS	Czechoslovakia ²	1936–37
Mr (later Sir) Frederick LEGGETT	United Kingdom ¹	1937–38
Mr Paal BERG	Norway ²	1938–39
Mr Carter GOODRICH	United States ¹	1939–45
Mr (later Sir) Guildhaume MYRDDIN-EVANS	United Kingdom ¹	1945–47
Mr Luis ALVARADO	Peru ²	1947–48
Mr Shamaldharee LALL	India ¹	1948–49
Mr Léon-Eli TROCLET	Belgium ²	1950–51
Mr Paul RAMADIER	France ¹	1951–52
Mr Fernando CISTERNAS	Chile ²	1952
Mr Fernando GARCÍA OLDINI	Chile ²	1953
Mr A.M. MALIK	Pakistan ²	1953–54
Mr Roberto AGO	Italy ¹	1954–55
Mr Arthur H. BROWN	Canada ¹	1955–56
Sir Guildhaume MYRDDIN-EVANS	United Kingdom ¹	1956–57
Mr Emilio CALDERÓN PUIG	Mexico ²	1957–58
Mr Julio A. BARBOZA-CARNEIRO	Brazil ²	1958–59
Mr Ernst MICHANEK	Sweden ²	1959–60
Mr George C. LODGE	United States ¹	1960–61
Mr S.T. MERANI	India ¹	1961–62
Mr Alexandre PARODI	France ¹	1962–63
Mr Emilio CALDERÓN PUIG	Mexico ²	1963–64
Mr George V. HAYTHORNE	Canada ¹	1964–65
Mr Oumar Baba DIARRA	Mali ²	1965–66
Mr Morio AOKI	Japan ¹	1966–67
Mr Roberto AGO	Italy ¹	1967–68
Mr George L.P. WEAVER	United States ¹	1968–69

* The list of the former Chairpersons of the Governing Body is regularly updated and can be consulted at the ILO web site.

¹ One of the States of chief industrial importance.

² Elected State.

Introduction to the Governing Body

Mr Héctor GROS ESPIELL	Uruguay	1969–70
Mr S.O. KOKU	Nigeria ²	1970–71
Mr Umarjadi NJOTOWIJONO	Indonesia ²	1971–72
Mr John MAINWARING	Canada ¹	1972–73
Mr Arturo MUÑOZ LEDO	Mexico ²	1973–74
Mr Mohamed Al-Arbi KHATTABI	Morocco ²	1974–75
Mr P.H. (later Sir Halford) COOK	Australia ²	1975–76
Mr Winfrid HAASE	Germany	1976–77
Mr Joseph MORRIS (Canada)	Worker member	1977–78
Mr Héctor CHARRY SAMPER	Colombia ²	1978–79
Mr Paul DONT SOP	Cameroon ²	1979–80
Mr Vijit SANGTONG	Thailand ²	1980–81
Mr Gabriel VENTEJOL	France ¹	1981–82
Srta. Aída GONZÁLEZ MARTÍNEZ	Mexico ²	1982–83
Mr Titus K.B. MBATHI	Kenya ²	1983
Mr Robert J. OU KO	Kenya ²	1983–84
Mr B.G. DESHMUKH	India ¹	1984–85
Mr Jean-Jacques OECHSLIN (France)	Employer member	1985–86
Mr W.R.B. ROBINSON	United Kingdom ¹	1986–87
Mr M.V. RUSSOMANO	Brazil ¹	1987–88
Mr Nathanaël G. MENSAH	Benin ²	1988–89
Mr Douglas POULTER	Australia ²	1989–90
Mr Gerd MUHR (Germany)	Worker member	1990–91
Mr Yvon CHOTARD	France ¹	1991–92
Mr Marcelo VARGAS CAMPOS	Mexico ²	1992–93
Mr John L. NKOMO	Zimbabwe ²	1993–94
Sra M. Nieves ROLDÁN-CONFESOR	Philippines ²	1994–95
Mr Yvon CHOTARD	France ¹	1995–96
Mr Jorge ARRATE MacNIVEN	Chile ²	1996–97
Mr Ahmed EL AMAWY	Egypt ²	1997–98
Mr Nobutoshi AKAO	Japan ¹	1998–99
Mr Jean-Jacques ELMIGER	Switzerland	1999–2000
Mr Celso AMORIM	Brazil ¹	2000–01
Mr Alain Ludovic TOU	Burkina Faso ²	2001–02
Lord BRETT (United Kingdom)	Worker member	2002–03
Mr Eui-yong CHUNG	Republic of Korea ²	2003–04
Mr Philippe SEGUIN	France ¹	2004–05
Mr Carlos TOMADA	Argentina ²	2005–06
Mr Membathisi MDLADLANA	South Africa ²	2006–07
Mr Dayan JAYATILLEKA	Sri Lanka ²	2007–08