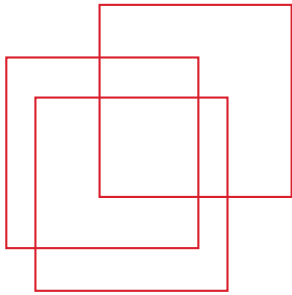




# THE AMERICAS



International  
Labour  
Organization



**2014 Report - Multinational Enterprises,  
Development and Decent Work: the promotion and  
application of the Tripartite Declaration of Principles  
concerning Multinational Enterprises and Social  
Policy (MNE Declaration) in the Americas**


## MNE DECLARATION



The ILO MNE Declaration recognizes the important role of MNEs in social and economic development and decent work for all. It seeks to **encourage their positive contribution** and **minimize and resolve potential negative impacts**.



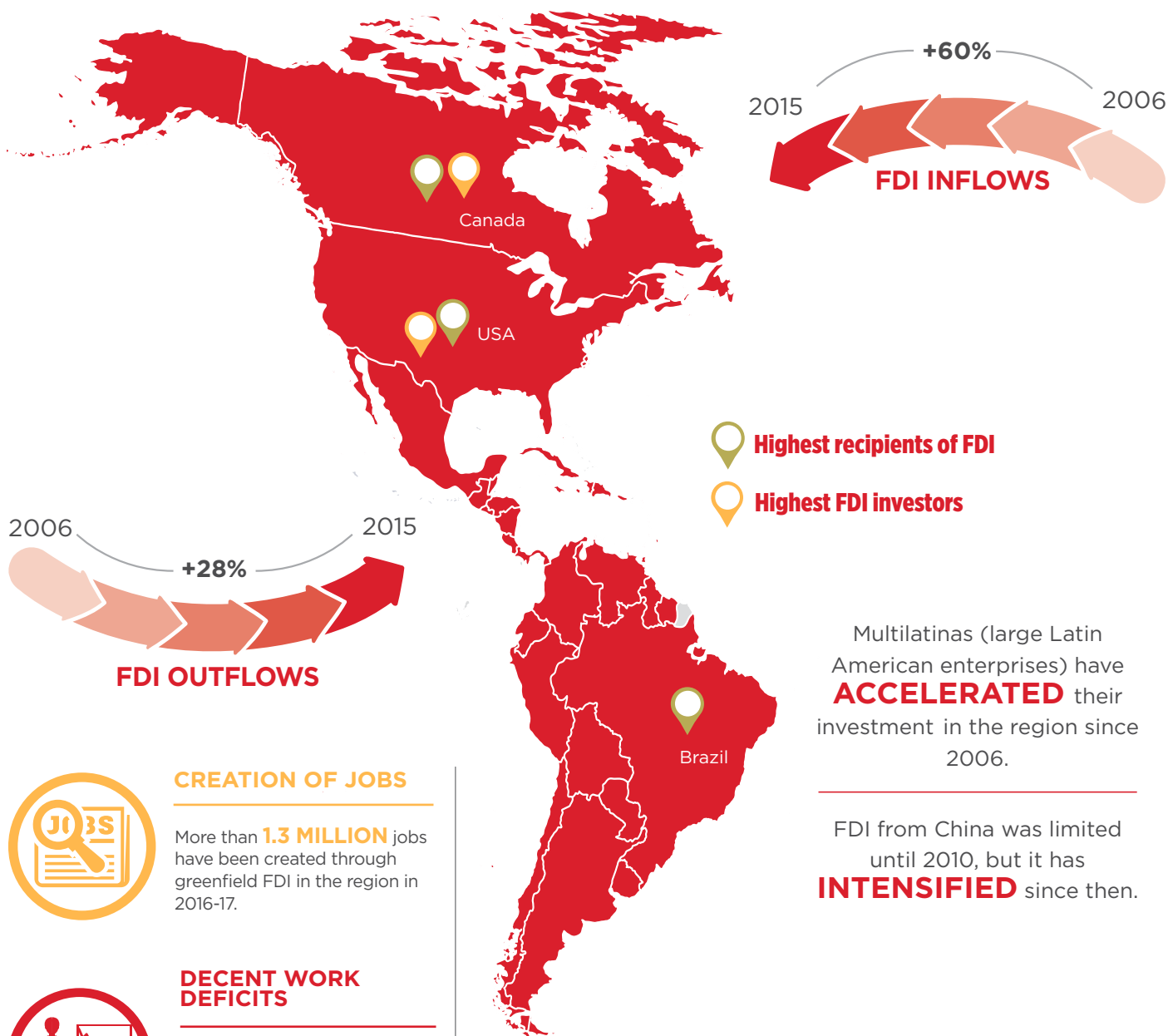
The principles in this tripartite-agreed global instrument offer **guidelines to MNEs, governments, and employers' and workers' organisations** in the areas of employment, training, conditions of work and life, and industrial relations.



As part of the regional follow-up mechanism to the MNE Declaration, a **QUESTIONNAIRE** was sent to governments and employers' and workers' organizations in the region. It requested them to provide information on the way in which they have **PROMOTED AND APPLIED THE PRINCIPLES** of the MNE Declaration at the country level. The report synthesizes their responses and provides an overview of FDI and related decent work opportunities and challenges in the region.

# AT A GLANCE: FDI AND DECENT WORK IN THE REGION

24 of the world's **TOP 100 NON-FINANCIAL MNEs** are located in the region.



Multinationals (large Latin American enterprises) have **ACCELERATED** their investment in the region since 2006.

FDI from China was limited until 2010, but it has **INTENSIFIED** since then.



## CREATION OF JOBS

More than **1.3 MILLION** jobs have been created through greenfield FDI in the region in 2016-17.



## DECENT WORK DEFICITS

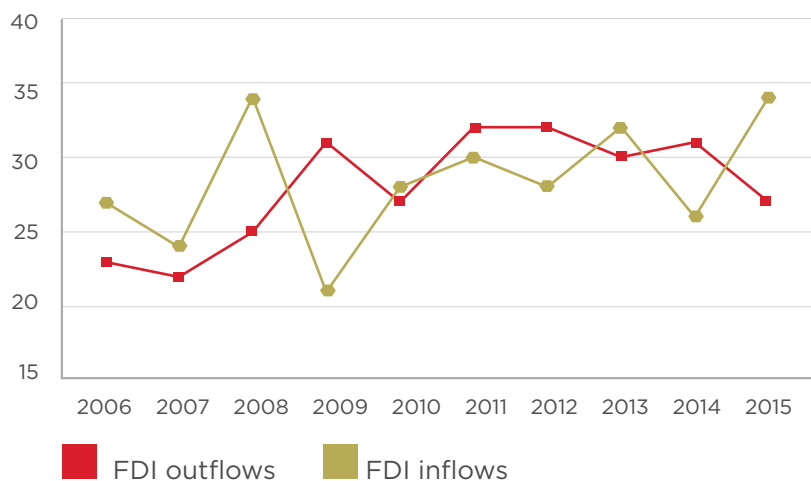
Job insecurity, underemployment, and the informal economy, among others, **REMAIN PREVALENT** in Latin America and the Caribbean, which has the highest level of inequality in the world.



## POLICIES AND FRAMEWORKS

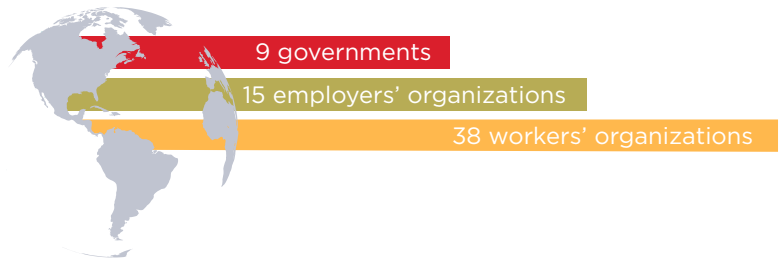
National investment policies in some countries include measures to promote **EMPLOYMENT OPPORTUNITIES**. Also, several countries have established dialogue mechanisms to develop public policies with regards to **SOCIAL RESPONSIBILITY**.

## REGION'S SHARE OF WORLD FLOWS (%)

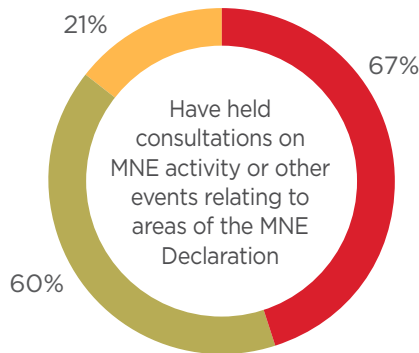
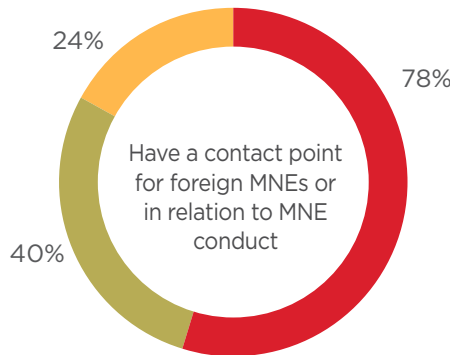


Antigua and Barbuda		
Argentina	■	■
The Bahamas		■
Barbados	■	■
Belize	■	
Plurinational State of Bolivia	■	
Brazil		■
Canada	■	
Chile	■	■
Colombia	■	■
Costa Rica	■	■
Cuba	■	
Dominica	■	
The Dominican Republic		■
Ecuador	■	
El Salvador		■
Grenada		
Guatemala	■	■
Guyana	■	
Haiti		■
Honduras		
Jamaica		■
Mexico	■	■
Nicaragua		
Panama		■
Paraguay		■
Peru	■	■
Saint Kitts and Nevis		■
Saint Lucia		■
Saint Vincent and the Grenadines		
Suriname	■	■
Trinidad and Tobago		■
The United States	■	■
Uruguay		■
The Bolivarian Republic of Venezuela	■	■

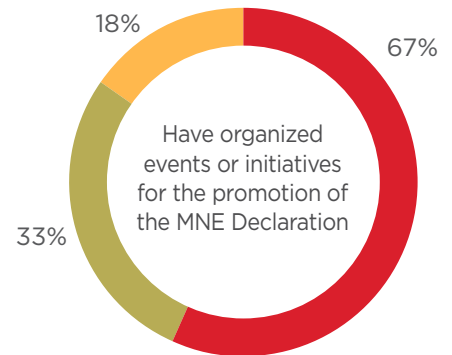
## VIEWS FROM GOVERNMENTS, EMPLOYERS AND WORKERS FROM THE REGION, BASED ON INPUTS DIRECTLY RECEIVED FROM:



### DIALOGUE AND CONSULTATION WITH MNEs AND/OR ON THEIR ACTIVITIES



### PROMOTION OF THE MNE DECLARATION AT COUNTRY LEVEL



57% Organised events jointly with other groups

76% Organised events jointly with peers of other countries

## AREAS OF THE MNE DECLARATION CONSIDERED AS RELEVANT FOR EACH GROUP



## MAIN RECOMMENDATIONS OF GOVERNMENTS, EMPLOYERS' AND WORKERS' ORGANIZATIONS TO ENHANCE THE IMPACT OF THE MNE DECLARATION IN THE REGION

- Organize events, training sessions, and develop and disseminate materials to advance the application of the principles of the MNE Declaration
- Strengthen tripartite dialogues in the region to contribute to enhanced policy coherence and joint actions
- Further promote the MNE Declaration in the region



### THE LIMA DECLARATION Adopted at the 18<sup>th</sup> American Regional Meeting

“Governments, employers and workers of the region agree that these concrete and pragmatic conclusions can inspire policy development and guide ILO action over the next four years. The ILO should provide assistance to its constituents in their efforts to implement concrete commitments through measures such as: (...) the promotion of the ILO Tripartite Declaration of Principles concerning Multinational Enterprises and Social Policy”

[Paragraph 18]



## FURTHER RESOURCES

MNE Declaration  
[www.ilo.org/mnedeclaration](http://www.ilo.org/mnedeclaration)

Multinational Enterprises and Enterprise  
Engagement Unit  
[www.ilo.org/multi](http://www.ilo.org/multi)

ILO Helpdesk for Business on International  
Labour Standards  
[www.ilo.org/business](http://www.ilo.org/business)

Use this code to access  
the 2014 report:

