



MEASURING SOCIAL PROTECTION PROGRESS: Review of the SDGs and Other Key Indicators

**Tripartite Seminar for Enhancing Social Protection in an Integrated Asean
Community, 25-26 November 2015, Indonesia**

KECUK SUHARIYANTO & DWI RETNO W.

Deputy Chief Statistician for National Accounts and Statistical Analysis

Email: kecuk@bps.go.id



OUTLINE

01

SDGs dan MDGs

02

SDGs Indicators Relating to Social
Protection

03

Unified Database



BADAN PUSAT STATISTIK

Pelopor
Data Statistik
Terpercaya
Untuk Semua



1. SDGs AND MDGs

THE GLOBAL GOALS For Sustainable Development



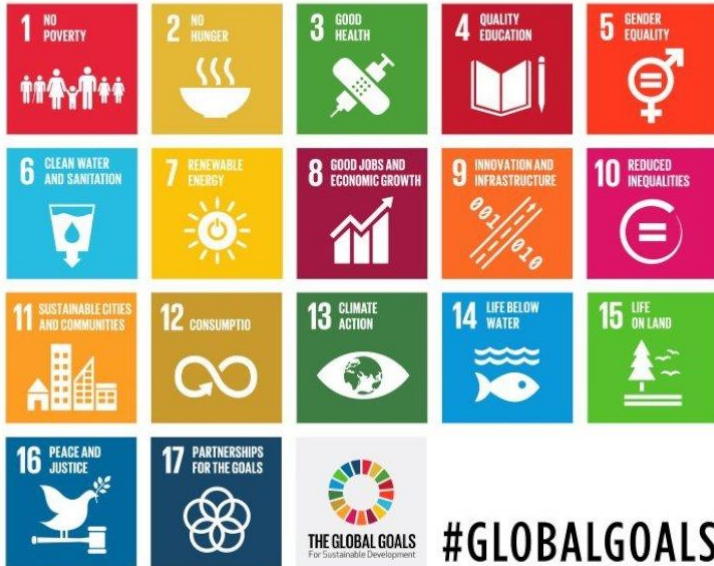
#GLOBALGOALS



SDGs: GOALS, TARGETS, INDICATORS

THE GLOBAL GOALS

For Sustainable Development



- **DIMENSIONS:** economic, social, environment
- **17 Goals, 169 targets**



± 220-300 Candidate Indicators



The backbone of monitoring the SDGs

Note:

Post 2015 Agenda was declared in UN General Assembly on 25 September 2015 witnessed by Country leaders → **The Global Goals for Sustainable Development (SDGs) cover 17 Goals and 169 targets. SDG indicators will be launched in March 2016.**



SDGS AND MDGS

	GOALS	TARGETS	INDICATORS
SDGs	17	169	± 220-300
MDGs	8	18	63

MDGs Achievement 2014: 13 achieved, 36 on track, 14 off track

Challenges in MDGs implementation in the context of statistical data use and availability:

- At regional level, not all MDGs indicators were integrated in planning and budgeting
- Not all MDGs indicators available in the database at district level
- Many local governments still considered data as “not important thing” for planning, monitoring and evaluation



SDG INDICATORS: STUDY BY BPS

KAJIAN INDIKATOR LINTAS SEKTOR

Kajian Indikator Sustainable Development Goals (SDGs)



BADAN PUSAT STATISTIK

ROLES OF STATISTICS IN SDGS

- To look at the current position of SDG achievement – comparing one region with others
- To monitor progress in SDGs achievement
- To predict whether the target will be achieved or not



MAPPING DATA AVAILABILITY OF SDG INDICATORS

	Main Indicators	Complimentary Indicators	Total Indicators
SDSN (July 2014)	109	111	220
Available in Indonesia*	73	62	135
Need to be developed**	36	49	85

Note:

- * Constraints: limited level, period, disaggregation
- ** Concept, methodology, data collection?



2. SDG INDICATORS RELATING TO SOCIAL PROTECTION

THE GLOBAL GOALS For Sustainable Development





SOCIAL PROTECTION PROGRAMMES IN INDONESIA (1)

SPF	PROGRAMMES
HEALTH CARE	<ul style="list-style-type: none">▪ Health Insurance for the poor: Jamkesmas, Jamkesda,▪ Health Insurance for civil servant and military personnel: PT Askes → BPJS Kesehatan▪ Health insurance for formal sector workers – PT Jamsostek▪ Universal delivery care – Jampersal▪ Jamsostek Pilot program for informal economy workers
CHILDREN	<ul style="list-style-type: none">▪ Education programmes : BOS/School operational Assistance, BSM/ Scholarship for the poor, SSM,▪ Conditional Cash Transfer: CCT programme/PKH, child labour reduction programme in support to PKH, Children's social welfare programme,▪ Staple food programme/ Raskin▪ School feeding programme▪ Universal basic vaccinations for children under 5 years old



SOCIAL PROTECTION PROGRAMMES IN INDONESIA (2)

SPF	PROGRAMMES
WORKING AGE	<ul style="list-style-type: none">▪ Severance pay/unemployment▪ Sickness and maternity▪ PNPM/National Community empowerment programme▪ KUR/ Microcredit programme▪ Askesos – informal sector workers▪ Employment Injury - Jamsostek▪ Death
ELDERLY & DISABLED	<ul style="list-style-type: none">▪ Pension and old age savings programme for civil servant and military personnel – PT. Taspen & PT Asabri▪ JHT/ Old age benefits for formal private sector employees▪ JSLU/Benefits for vulnerable elderly▪ JSPACA/ Benefits for person with disabilities



GOAL 1. NO POVERTY

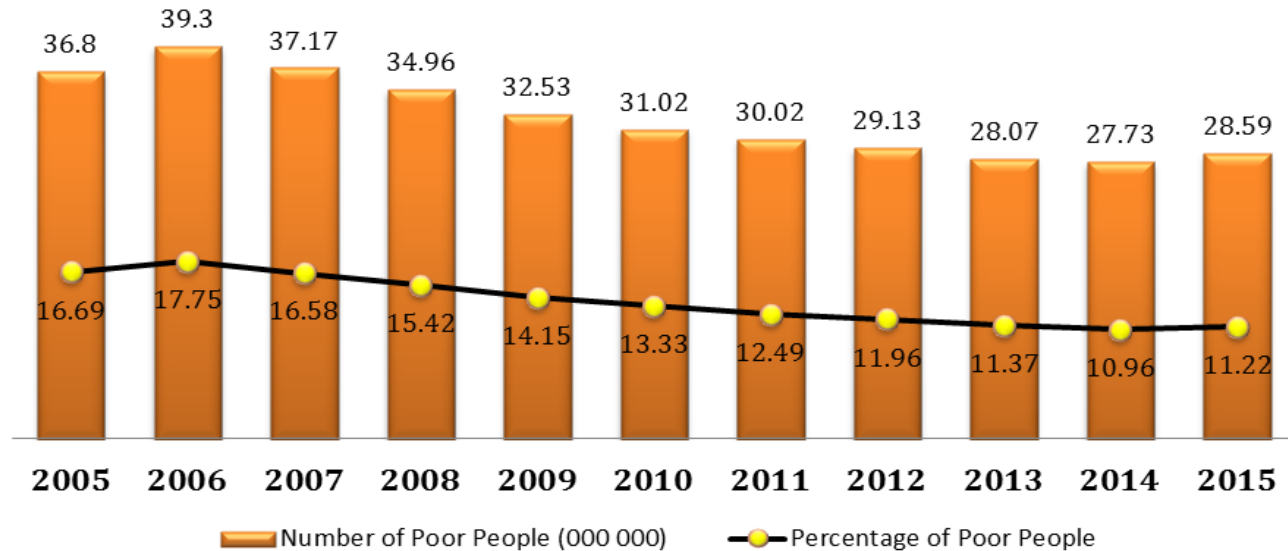
1 NO POVERTY



Target 1.2

by 2030, reduce at least by half the proportion of men, women and children of all ages living in poverty in all its dimensions according to national definitions

END POVERTY IN ALL ITS FORMS EVERYWHERE



Potential Indicators

Availability

Proportion of population below \$1.25 (PPP) per day

√

Proportion of population living below national poverty line & Poverty gaps

√

Multidimensional Poverty Index

√

Number of household/individuals covered by poverty alleviation programmes

√



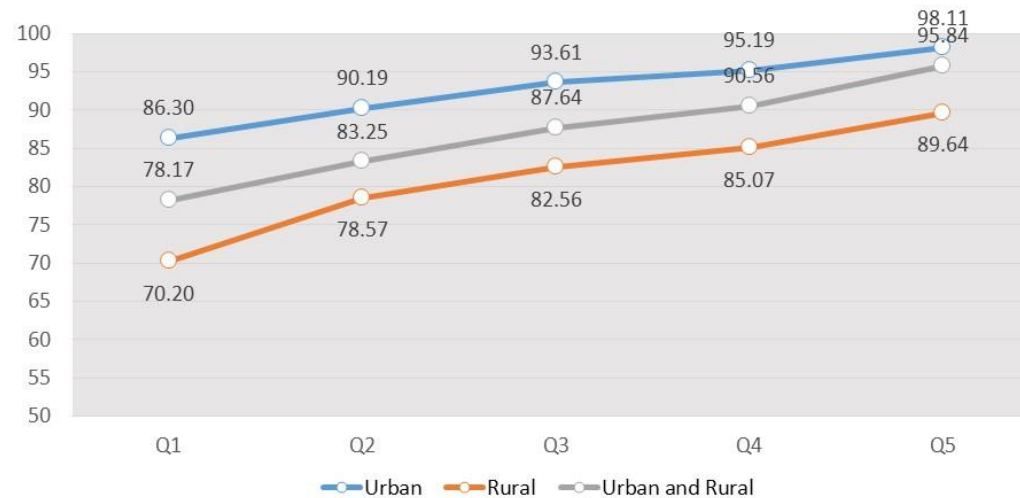
GOAL 3. GOOD HEALTH

3 GOOD HEALTH



Ensure healthy lives and promote well-being for all at all ages

Child Delivery Helped by Medical Personnel, 2014



Universal Social Insurance (BPJS Kesehatan) as a new National Social Security System (SJSN) will change the social protection paradigm

Potential Indicators

Availability

Percentage of births attended by skilled health personnel

√

Neonatal, infant, and under-five mortality rates

√

Incidence and death rates associated with malaria (MDG Indicator)

√

Number of household/individuals covered by health insurance programmes

√



GOAL 4. QUALITY EDUCATION

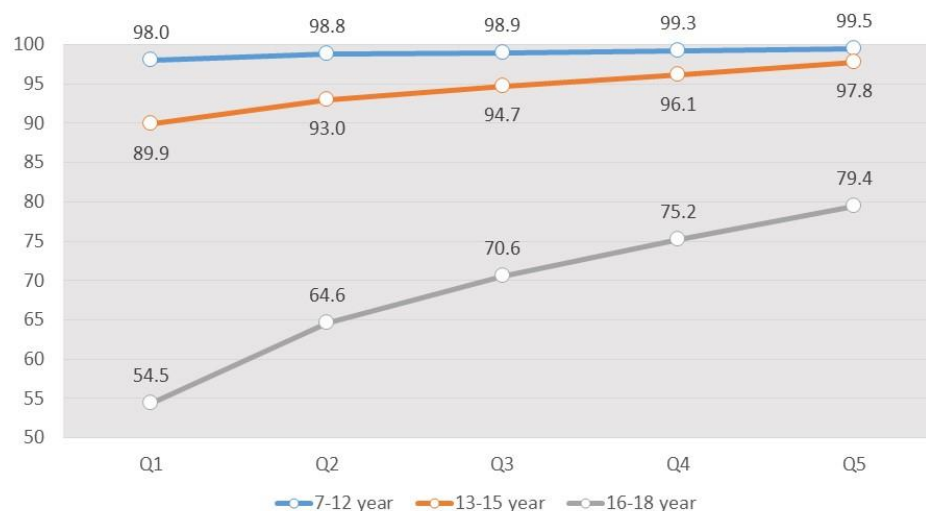
4 QUALITY EDUCATION



Ensure inclusive and equitable quality education and promote life-long learning opportunities for all

Social Assistance:
BSM (Scholarship for
poor students at
elementary, junior
and senior high
school level)

School Participation Rate by Expenditure Quintile, 2014



Potential Indicators

Availability

Primary/secondary completion rates for girls and boys

✓

Tertiary enrollment rates for women and men

✓

Literacy rate

✓

Number of household/individuals covered by education programmes

✓



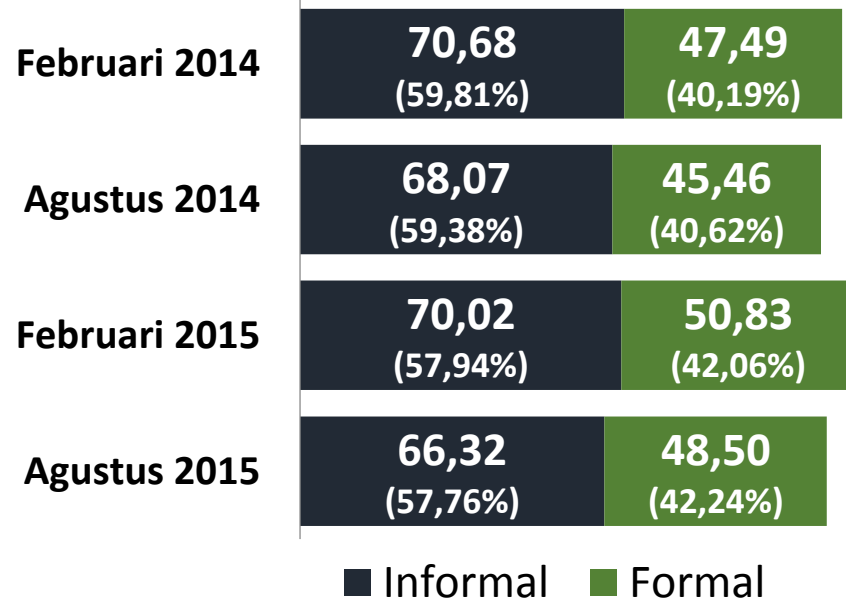
GOAL 5. GENDER EQUALITY



Potential Indicators	Availability
Percentage of seats held by women in national parliament	✓
Gender gap in wages, by sector of economic activity	✓
Gender Development Index (health, education, income)	✓
Total fertility rate	✓
Number of household/individuals covered by community empowerment programmes	?



GOAL 8. DECENT WORK AND ECONOMIC GROWTH



Potential Indicators	Availability
Youth employment rate, by formal and informal sector	√
Share of informal employment in total employment	√
Employment to population ratio (EPR) by gender and age group (15–64)	√
Number of workers covered by work (death, injury, pension) insurance programmes	√



GOAL 10. REDUCED INEQUALITY

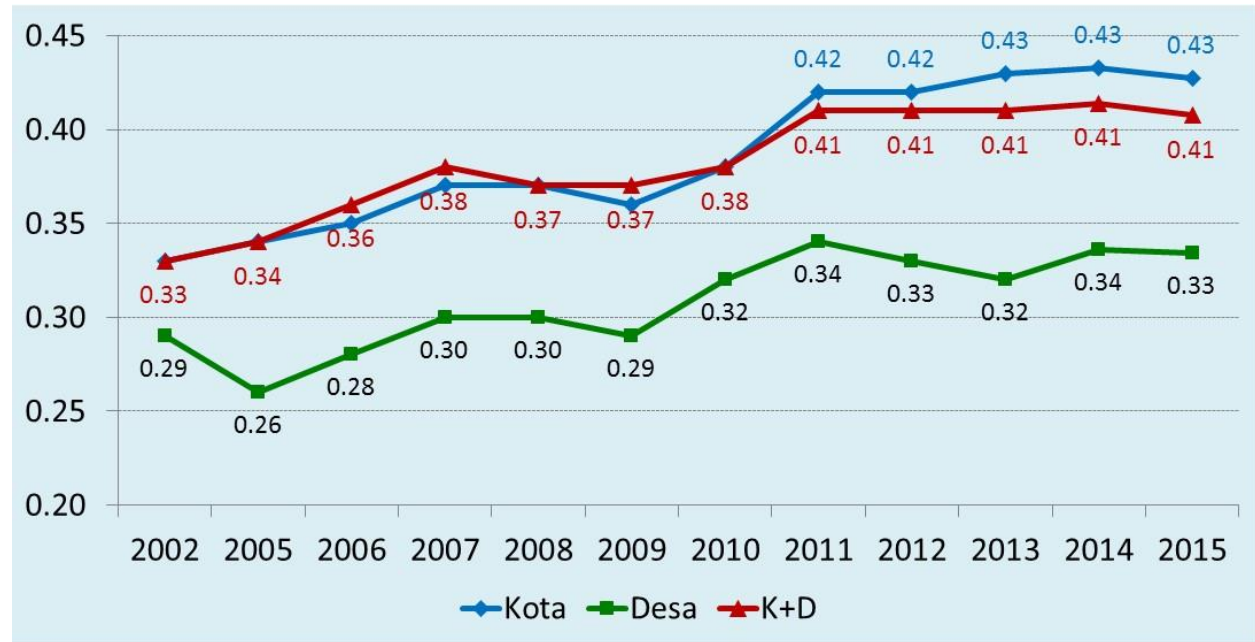
10 REDUCED INEQUALITIES



Reduce inequality within and among countries

SDGs Recommendations

By 2030 progressively achieve and sustain income growth of the bottom 40% of the population at a rate higher than the national average – reducing the ratio of the income share received by the top 10% to the income share of the bottom 40% to less than 1



Gini Ratio 2002-2015

Potential Indicators

Availability

Gini Coefficient

√

Number of household/individuals covered by poverty alleviation programmes

√



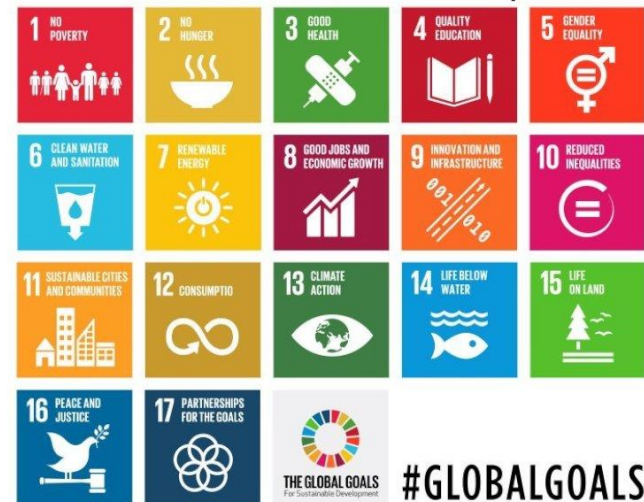
BADAN PUSAT STATISTIK

Pelopor
Data Statistik
Terpercaya
Untuk Semua



3. UNIFIED DATABASE FOR SOCIAL ASSISTANCE PROGRAMMES

THE GLOBAL GOALS For Sustainable Development



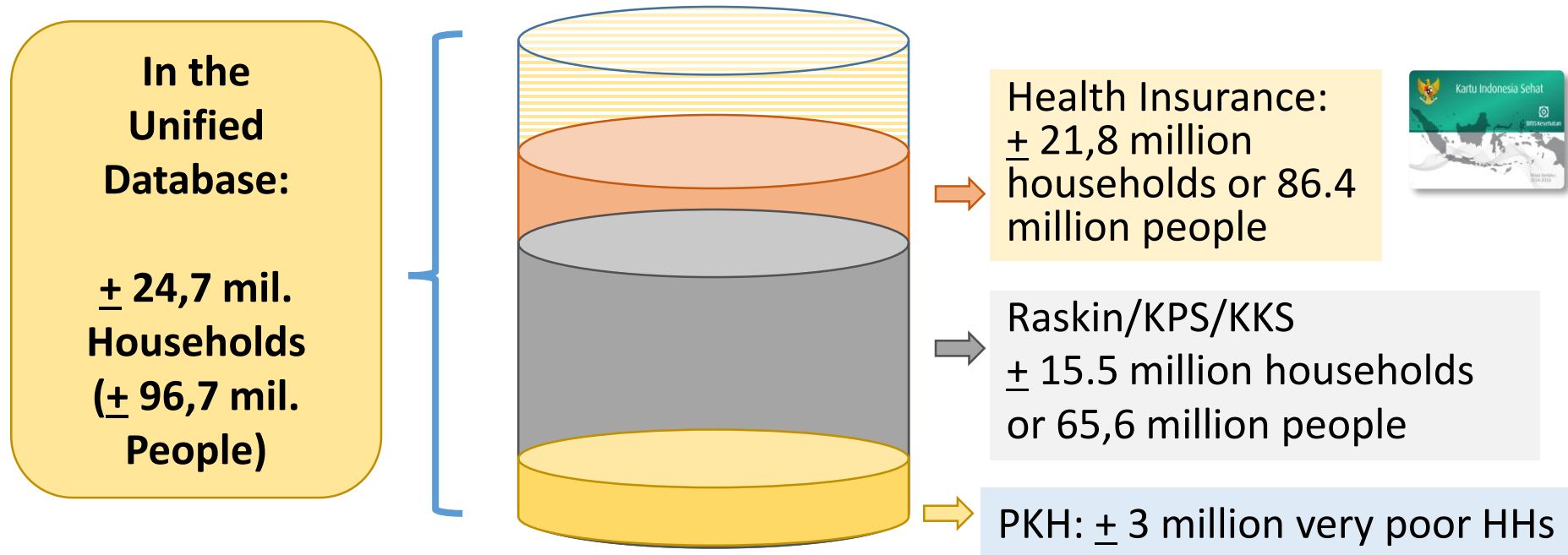


THE UNIFIED DATABASE (UDB)

- The Unified Database (UDB) is an electronic data system which contains the names, addresses, IDs and basic socioeconomic information on individuals from 24,7 million households in Indonesia.
- The UDB was populated with results from the PPLS 2011 survey and has now become a main point of reference for social protection and poverty alleviation programs both national and regional.
- It can be used to:
 - ✓ Carry out analysis or planning for poverty alleviation activities/programmes.
 - ✓ Target beneficiaries of social protections programmes.



SINGLE REGISTRY IMPROVES PROGRAM COMPLEMENTARITY



- Household ranking with
 $PMT\ Index = f(\text{household \& regional characteristics})$
- The household characteristics includes housing conditions and status of ownership, assets, number of household members, level of education, working status, etc. → specific for each district/city



HOUSEHOLD CHARACTERISTICS IN 2015 UDB

Target Hhs (RTS) Identity

- ✓ Name of RTS head
- ✓ Address/SLS
- ✓ Village
- ✓ District
- ✓ Regency/city
- ✓ Province
- ✓ Number of RTS member

Demographic

- ✓ Name of RTS member
- ✓ Relationship to head of RTS
- ✓ Sex
- ✓ Date of birth
- ✓ Age
- ✓ Marital Status
- ✓ Ownership of ID card
 - ID Number (NIK)
 - Marriage certificate
 - Divorce certificate
 - Birth certificate

Health

- ✓ Type of disability
- ✓ chronic diseases
- ✓ Pregnant status
 - Contraception used

Employment

- ✓ Work activities
- ✓ Main industry
- ✓ Employment Status
 - Micro Enterprises (UMK): the owner of a business, type of business, workforce, turnover..

Ownership of assets

- ✓ Car
- ✓ Motorcycle
- ✓ Motorboat
- ✓ Motorship
- ✓ Bike
- ✓ Boat
- ✓ Refrigerator
- ✓ Gas cylinders
 - Ownership of land
 - Ownership of livestock
 - gold
 - Cellphone
 - TV

Housing

- ✓ Dwelling ownership status
- ✓ Floor area
- ✓ Building area
- ✓ Floor material
- ✓ Wall material
- ✓ Roof material
- ✓ Source of drinking water
- ✓ The way to obtain drinking water
- ✓ Lighting source
- ✓ Level of installed electric power
- ✓ Type of cooking Fuel
- ✓ Toilet facility
- ✓ Fecal landfills
- ✓ Bedroom

Education

- ✓ School participation
- ✓ The highest grade
- ✓ The highest diploma

Program Participation

- ✓ PKH
- ✓ Raskin (Rice for the poor)
- ✓ Jamkesmas
- ✓ Other health insurance
- ✓ Jamsostek
 - KKS
 - KIP
 - BPJS/KIS

Note: The red color is not asked in PPLS 2011.

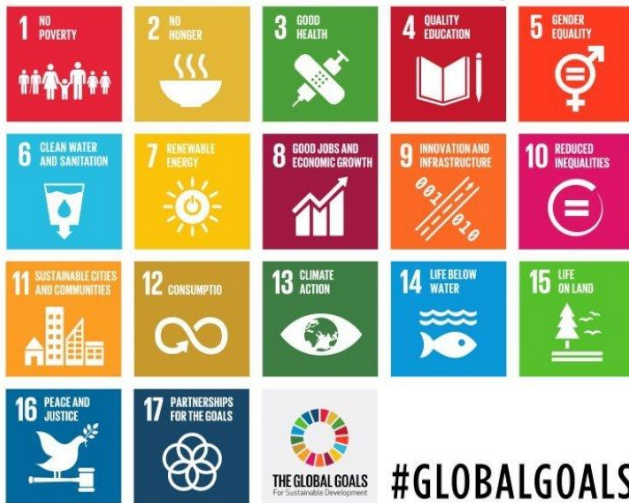


- In the context of Social Protection, Indonesia has begun the Unconditional Cash Transfer (UCT) for the first time in 2005, with giving cash money to poorest, poor, and near poor targeted households and Conditional Cash Transfer (CCT) in 2007 that addressed to the same targeted households as in UCT, but with applying some criteria of eligibility.
- A new National Social Security System (SJSN) radically change the social protection paradigm. Indonesia has a challenge to maintain and enhanced social protection system for universal health coverage for all Indonesian by 2019 and expand the social security schemes for all worker, including the informal workers start in 2015.
- Indicators to monitor SDGs which related to measure social protection progress is limited and need to be improved.



THE GLOBAL GOALS

For Sustainable Development



THANK YOU