

# Post Disaster Needs Assessment Training

## Employment and Livelihoods

Session 1 Introduction  
Asha Kambon, PhD

Date: 21/06/2021

## Objectives of the Training

- To provide an orientation in the conduct of PDNA and to equip participants with the necessary information to participate in assessments at the national level
- To familiarise participants with the use of a contingency planning as part of their tool kit for post disaster recovery
- To strengthen capacity which will allow participation and full engagement in the recovery processes which form part of the PDNA, with regard to labour and livelihoods
- To provide an understanding of how labour actors can intervene in the PDNA process

Date: 21/06/2021

Advancing social justice, promoting decent work

2



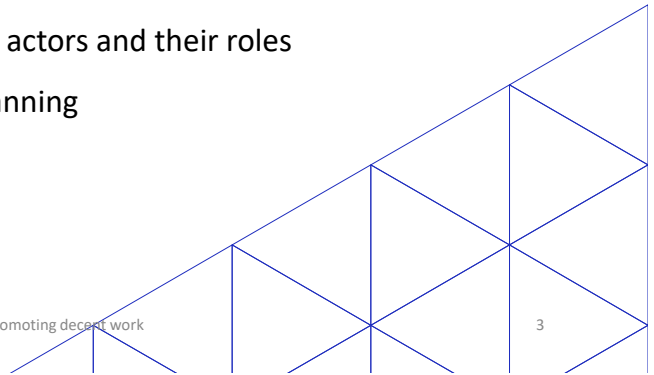
# Day One – Introduction to Post Disaster Needs Assessment and Recovery

- Overview of the Post Disaster Needs Assessment and how Labour Market Contingency Planning (LMCP) can be a tool for recovery planning:
  - Introduce the PDNA: origins and use
  - Identify the typical sectors of the PDNA, actors and their roles
  - Introduce LMCP as a tool in recovery planning

Date: 21/06/2021

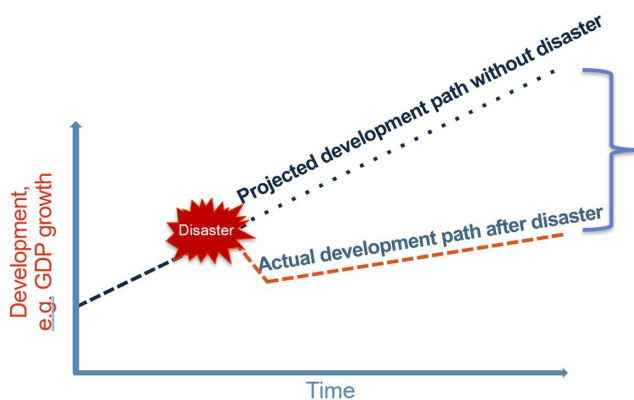
Advancing social justice, promoting decent work

3



## Disasters and development outcomes – what's the link?

### Disasters undermine development gains...

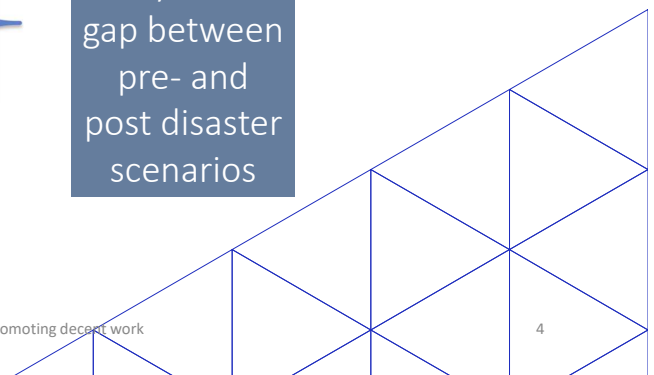


The PDNA analyzes the gap between pre- and post disaster scenarios

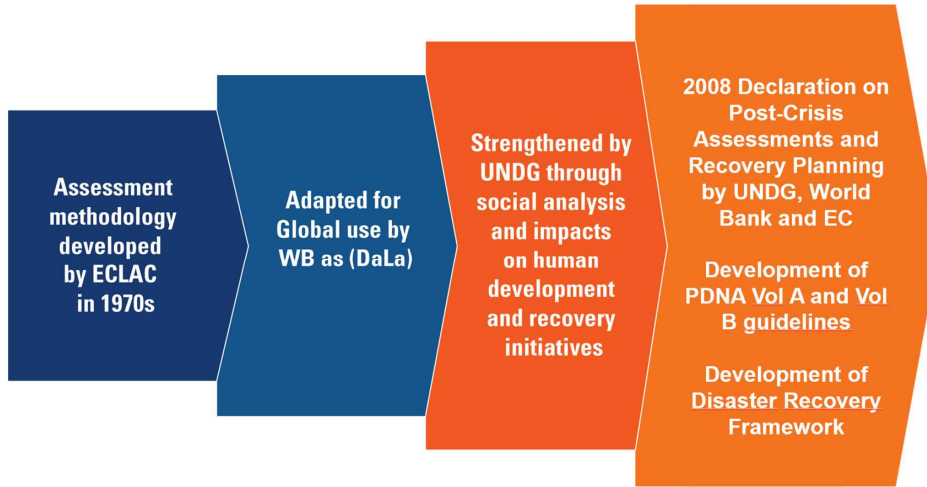
Date: 21/06/2021

Advancing social justice, promoting decent work

4



# The PDNA Origins



Date: 21/06/2021

Advancing social justice, promoting decent work

5

# PDNA Recent Use

**Impact** of the 2008 Declaration on Post-Crisis Assessments and Recovery Planning:



Today, the PDNA is a globally applied tool. Since 2008 over **50 assessments** have been conducted in more than **46 countries**.

Date: 21/06/2021

Advancing social justice, promoting decent work

6

# The PDNA Process

A PDNA consists of **five** assessment steps...



... that are conducted **across all sectors** of existing human and economic activity of the affected country

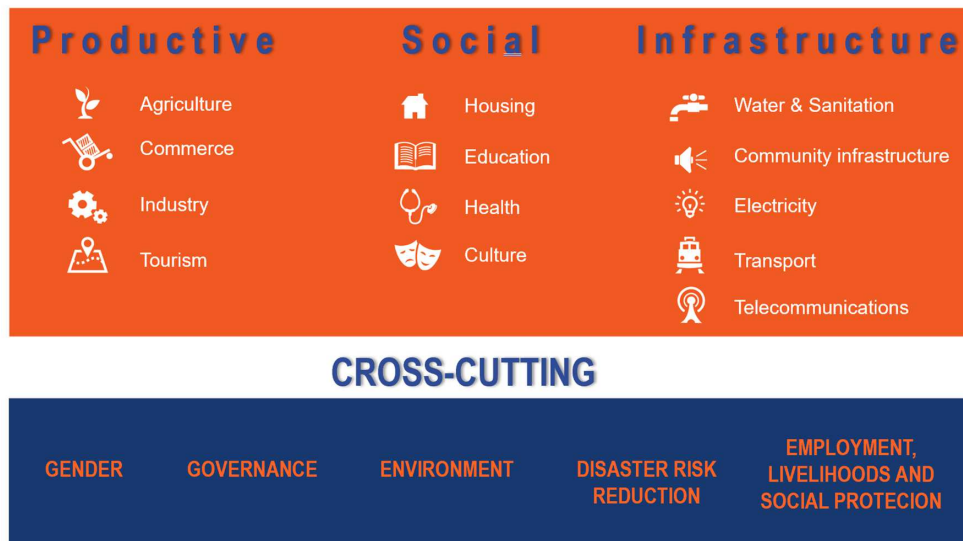
This analysis is broadly aligned with the system of **national accounts**

Date: 21/06/2021

Advancing social justice, promoting decent work

7

# The PDNA Sectors



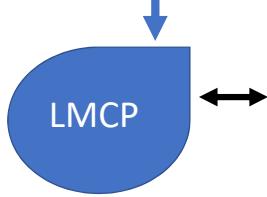
Note: The diagram above illustrates the typical sectors that are assessed in the PDNA, this can vary from country to country.

Date: 21/06/2021

Advancing social justice, promoting decent work

8

# LMCP as a tool in recovery planning



Can assist in a better understanding of the impact of disasters on labour markets and the adoption of necessary measures to mitigate them.

Date: 21/06/2021

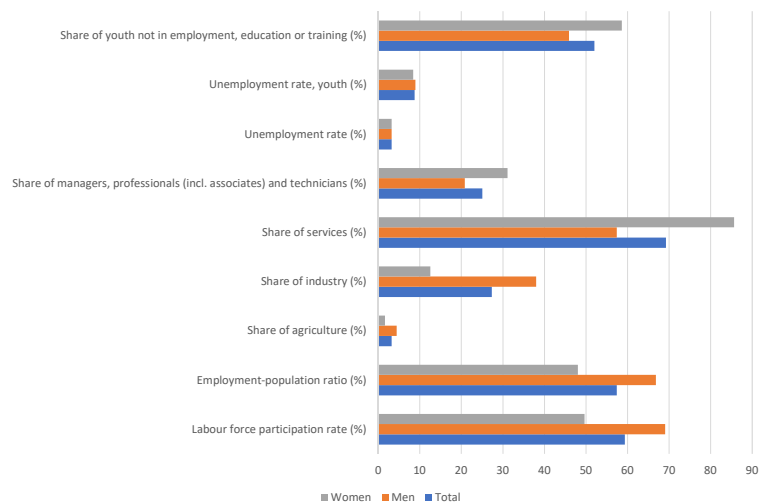
Advancing social justice, promoting decent work

9

## LCMP:

- Will allow you to have the necessary pre disaster data sets essential for an assessment
- Allow you to use the estimation of loss of employment and livelihoods in the assessment
- Allow you contribute to the needs for recovery

Labour force indicators (lates year 2016)  
Trinidad and Tobago



Date: 21/06/2021

Advancing social justice, promoting decent work

10

# Discussion

