

SESSION 8.

PEPs, the environment and climate action

- Designing PEPs for disaster response
 - Integrating Green PEPs into disaster preparedness and climate change adaptation



EXERCISE:

Series of photos will be posted

Questions:

- What comes first to you mind when you see the images?
- What feelings are invoked while watching the images?
- Why were you drawn to this picture?









www.boredpanda.com



www.archive.indianexpress.com





Source: www.damajority.com







Environment Challenges and Climate Change

- Continued environmental degradation and the accelerating pace of biodiversity loss
- Slow pace and limited scale of action to mitigate and adapt to climate change impacts
- Climate inaction will be costly leading to disruptions in livelihoods & destruction of infrastructure

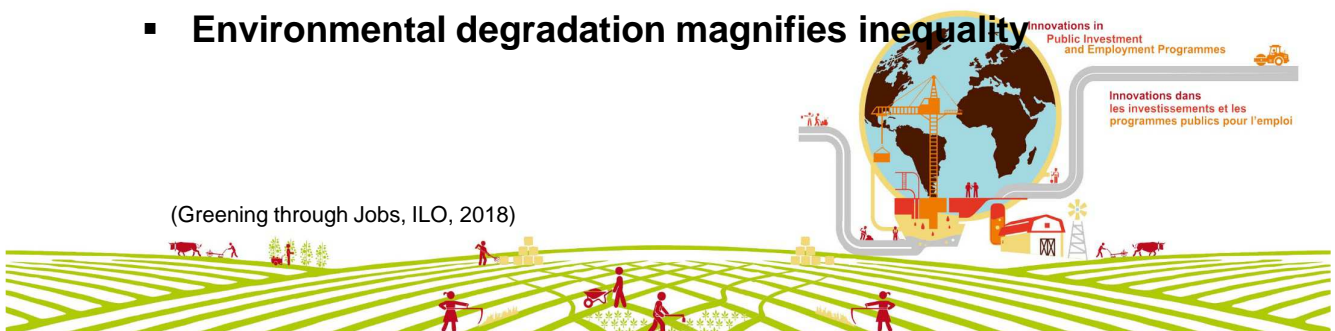
Further, **poor communities and vulnerable populations groups** have **lower capacity to mitigate and adapt** to the social, economic and environmental damage associated with these challenges.



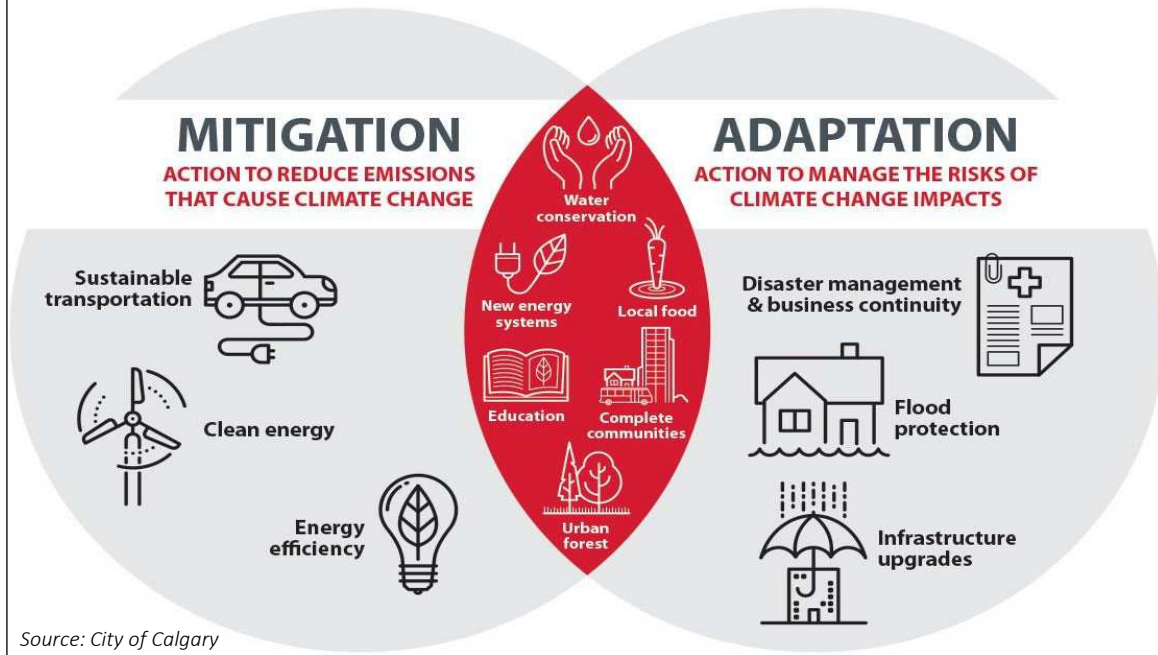
Why PEPs should care about environmental sustainability

- Jobs depend on scarce and finite natural resources
- Economic activity – and jobs – depend on ecosystem services
- Economic activity relies on a stable, disaster-free environment
- Lack of decent work may lead to over-exploitation of natural resources
- Environmental degradation magnifies inequality

(Greening through Jobs, ILO, 2018)



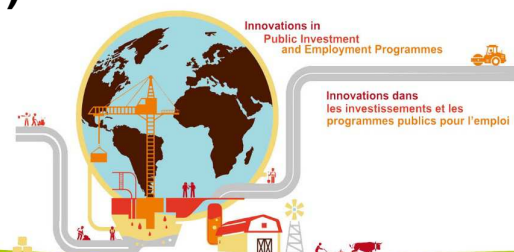
Building Climate Resilience



l'emploi

Integrating PEPs into disaster preparedness and climate change adaption

“PEPs have become crucial policy tools that combine economic, social and environmental objectives in support of adapting to and mitigating environmental degradation and climate change.” (WESO, 2018)



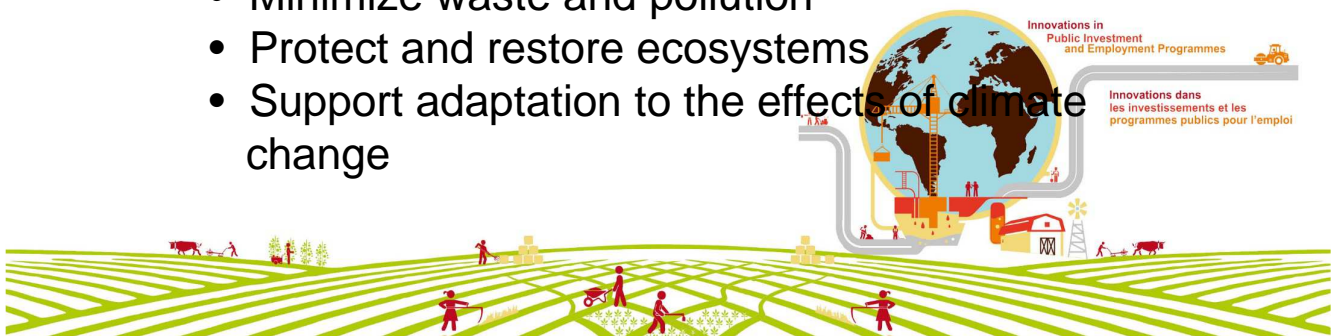
l'emploi



Jobs are green when they help reduce negative environmental impacts and lead to environmentally, economically and socially sustainable enterprises and economies.

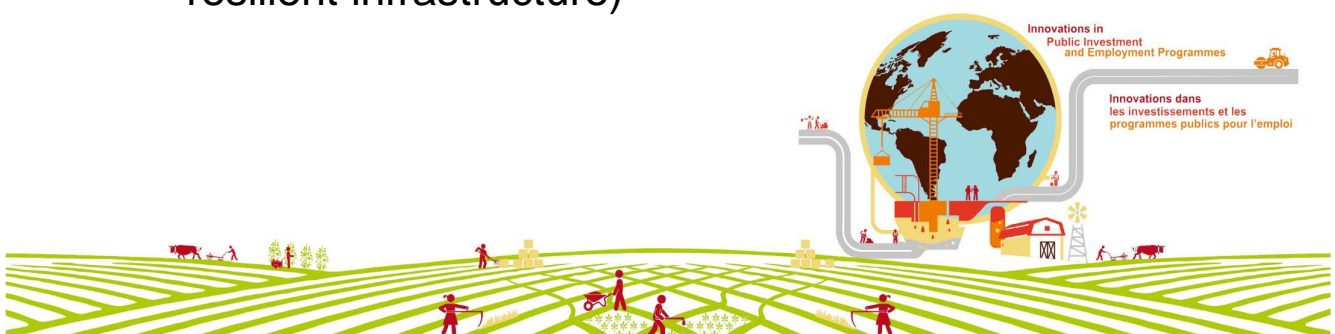
Green jobs help:

- Improve energy and raw materials efficiency
- Limit greenhouse gas emissions
- Minimize waste and pollution
- Protect and restore ecosystems
- Support adaptation to the effects of climate change



Green jobs contribute directly to:

- reducing the environmental impacts of the economy
- enhancing green sectors (renewable energy, pollution control, forestry, mass transport, eco-tourism, etc.)
- Improving the environmental performance of existing sectors (manufacturing, construction, tourism)
- Adapting to the effects of climate change (climate resilient infrastructure)



Green Works are infrastructure and related work that have direct environmental benefits or in response to a specific environmental issue including changes in climate and extreme weather events.

Green Works cover a range of different infrastructure types and activities.



OPPORTUNITIES FOR GREEN PEPs

- **Acute environmental degradation:** deforestation, soil erosion, floods
- **Complementing rural development**
Agriculture, rainwater harvesting, catchment management
- **Alternatives to environmentally-harmful practices**
Agro-forestry, reforestation



OPPORTUNITIES FOR GREEN PEPs

- **Urban areas with high poverty and unemployment**
Tree planting, waste management, green building
- **Responses to natural disasters**
Short-term: reverse disaster damage
Long-term : restore environment
- **Climate change adaptation**
Watershed management, climate-resilient infrastructure



Coastal resource management

Triangular concrete pyramids dropped in fish sanctuaries provide anchorage for corals to reconstruct damaged reefs. The youth can be trained to do this.

Mangrove reforestation



Mangroves not only provide a protective barrier against storm surges but also lead to the development of marine ecosystems.

ment Programmes
ations dans
vestissements et les
grammes publics pour l'emploi



The youth in the community can be tapped to gather mangrove propagules and bag these before replanting in selected sites.

programmes
dans
sements et les
s publics pour l'emploi



Seaweed farming



With proper care and maintenance, seaweeds can be harvested and produce new fingerlings for another cycle of production after 45 days. Dried seaweed sells for US\$1.40/kilogram.

Programmes
Investissements et les
programmes publics pour l'emploi



Upland farming



Sloping agricultural land technology is applied to stabilize the slopes and prevent soil erosion and loss of soil nutrients. Hedgerows along contour lines help do this.

Investment
Employment Programmes
Innovations dans
les investissements et les
programmes publics pour l'emploi



Charcoal briquette production



Agricultural wastes like coconut husks, cocolumber, dead trees, etc., are collected as raw materials for the charcoal briquetting plant.

nt Programmes 

tions dans
estissements et les
mmes publics pour l'emploi



Charcoal briquette production



The charcoal briquettes are used as a more energy-efficient fuel for household use.

rammes 

ans
nements et les
publics pour l'emploi



Green works



CLIMATE PROOFING FOR RURAL ROADS IN TIMOR-LESTE

Innovations in
Public Investment
and Employment Programmes



Innovations dans
les investissements et les
programmes publics pour l'emploi



Green works

- Focusing on the six micro-watersheds a source for 324,043 inhabitants.
- 2.563 km of anti-erosive ditches with reinforced stone barriers covering 1,800 hectares of slopes



Green works

- Extraction of 134.888 m³ of rocks and construction of 3.211 thresholds for dry masonry used for water retention



Green works

Construction of gabions for river bank protection

Terracing or contour farming for erosion control and to increase agriculture area



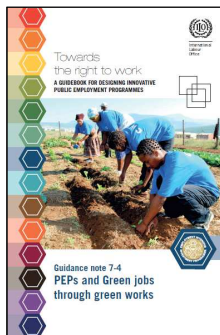
GROUP WORK

- What are the environmental issues/challenges in your country?
- Identify entry points where Green Works and Green Jobs can be integrated into disaster preparedness and climate change adaptation?
- Determine appropriate Green Works and Green jobs activities to address the environmental challenges?
- Identify partners that will help implement Green Works and Green jobs activities

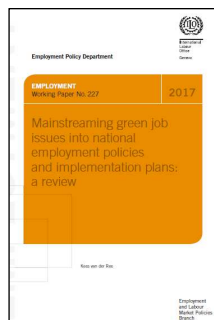
Duration: 15 mins



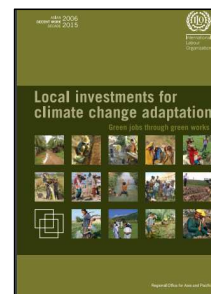
More information:



https://www.ilo.org/global/topics/employment-intensive-investment/publications/WCMS_559289/lang-en/index.htm



https://www.ilo.org/employment/Whatwedo/Publications/working-papers/WCMS_618884/lang-en/index.htm



https://www.ilo.org/asia/publications/WCMS_172716/lang-en/index.htm



References

1. Mohamed Najma, PEPs, the Environment and Climate Action, May 2019, ITCILO
2. Palarca, Nori, Samoa Presentation, 2015, ILO
3. Walter, Dagmar, Green Jobs and Just Transition to Environmental Sustainability, Nov 2017, ILO

Online resources:

1. <https://www.creadominica.org/>

