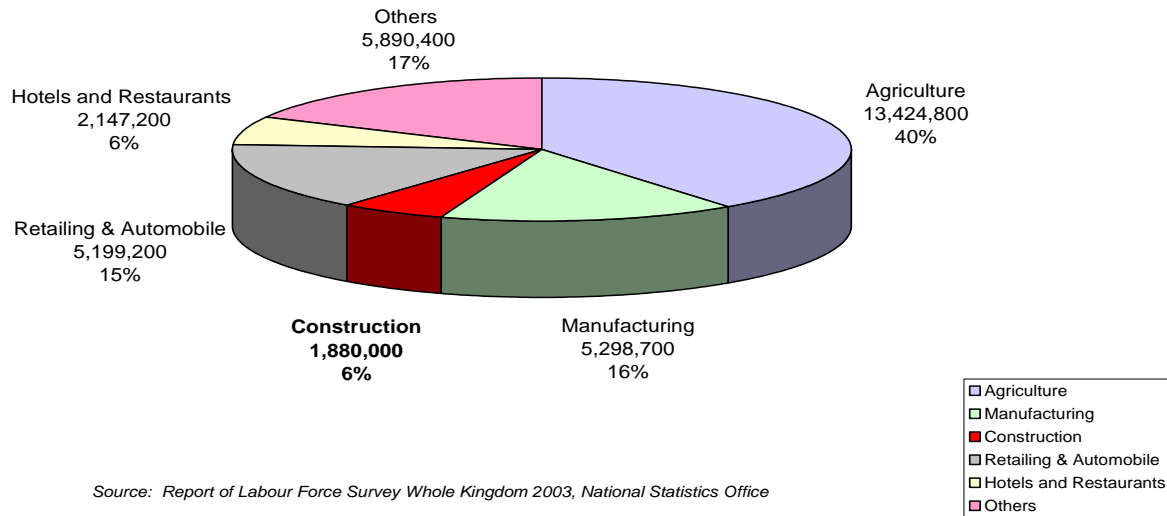


Thailand – Occupational Safety and Health in the Construction Industry

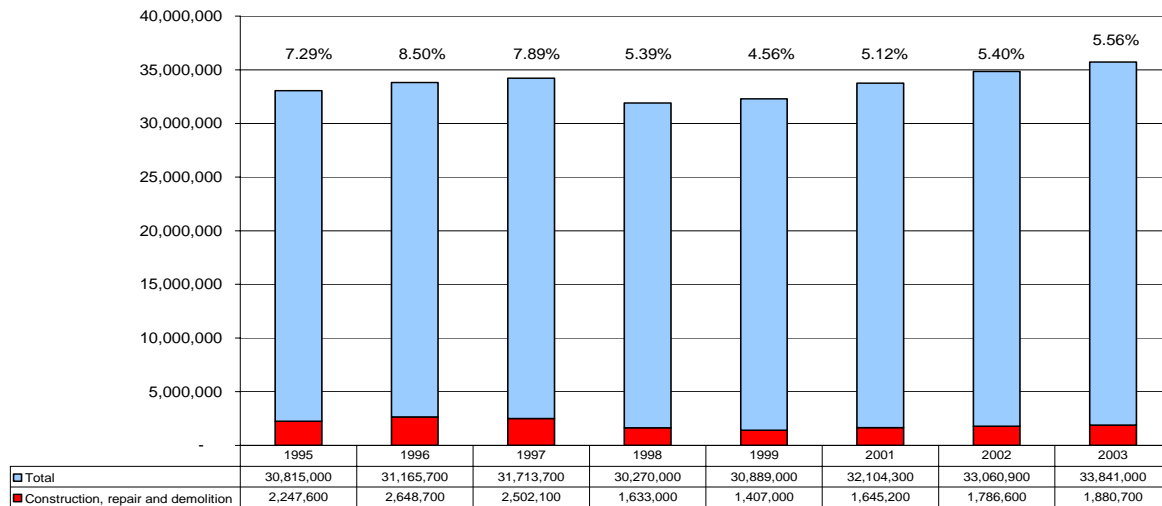
Employment 2003

Construction work employs 1,880,700 (6%) of the total workforce (33,841,000). It is the fifth largest group by profession.¹

Employed Persons by Industry: 2003

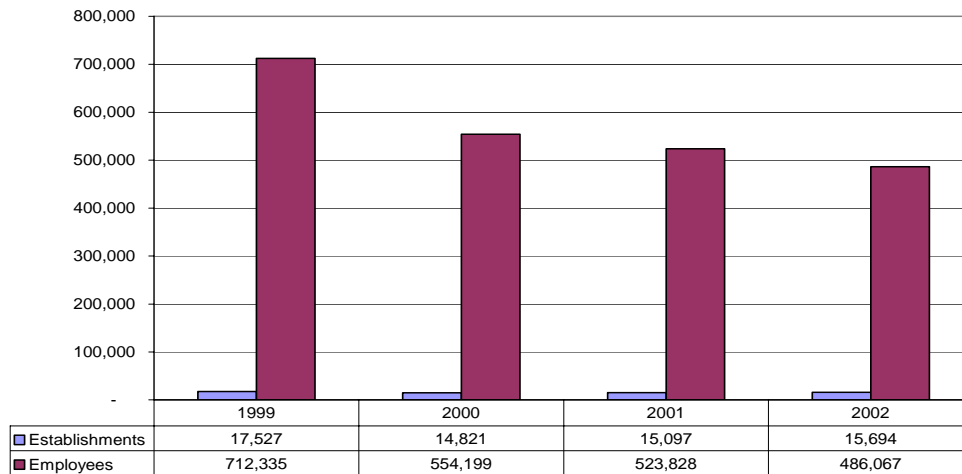


Employment in the Construction Sector, 1995-1999 and 2001-2002

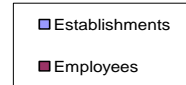


Source: Thailand in Figures 2003-2004

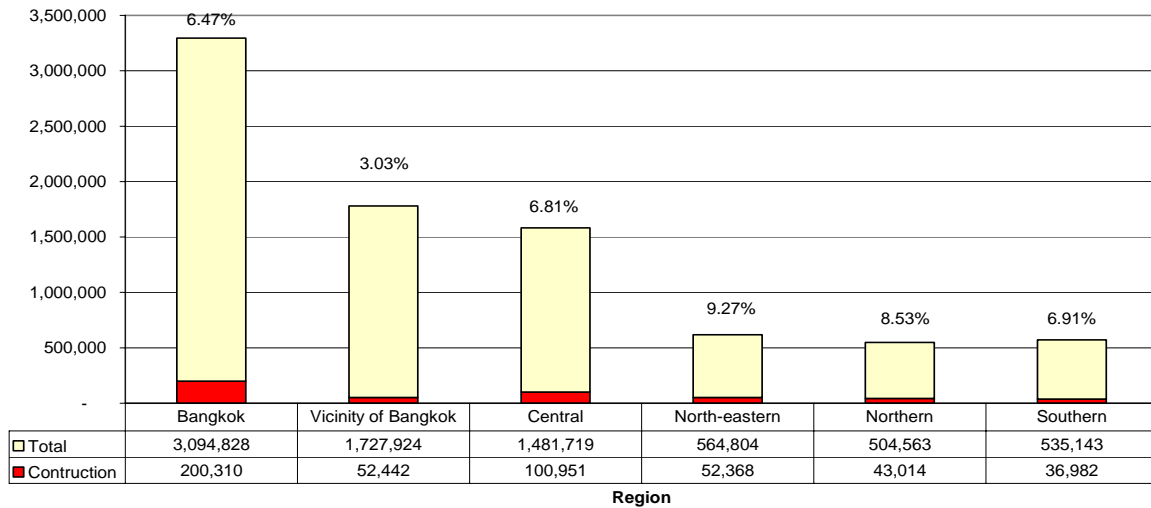
Number of establishments and employees - Construction Sector, 1999-2002



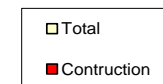
Source: Thailand in Figures 2003-2004



Number of employees: Construction Sector by region, 2002



Source: Thailand in Figures 2003-2004

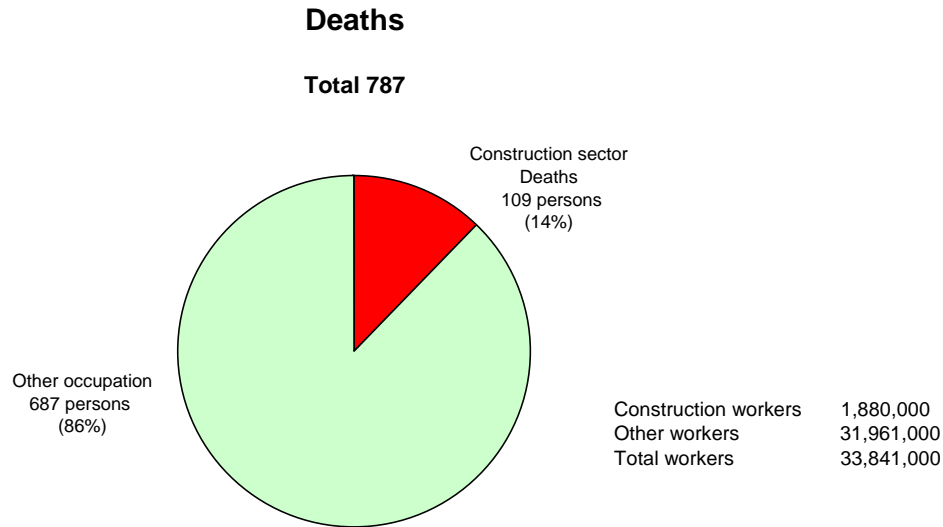


Deaths and Injuries in the Construction Industry in 2003 ²

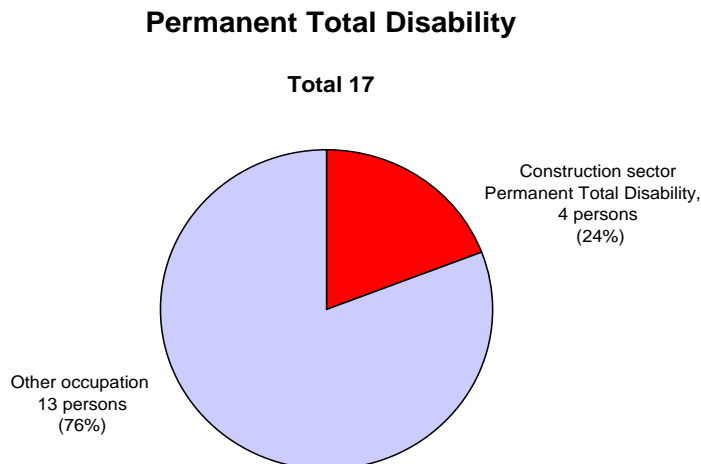
Yet construction work accounts for 14% (almost 1 in 6) of deaths at work, and 24% of permanent total disability.

Construction workers are 2.7 times as likely to face occupational death as other occupations – 57 per million versus 21 per million.

Construction workers are 5 times as likely to suffer permanent total disability as other workers – 2.1 per million versus 0.4 per million.



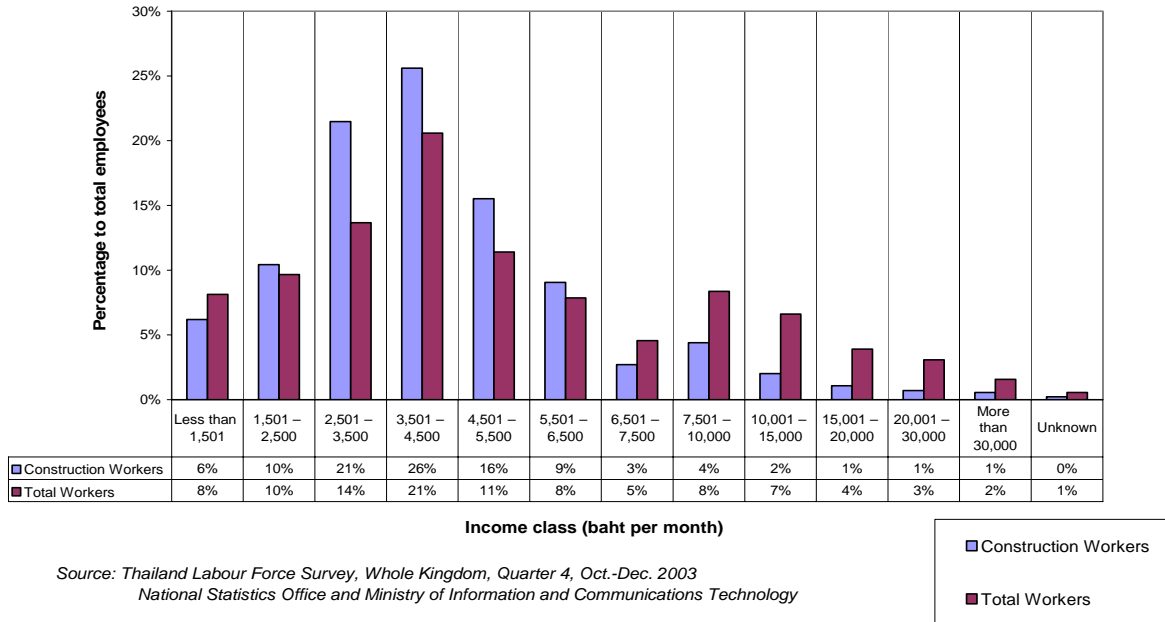
Source: Workmen's Compensation Fund, Social Security Office, Ministry of Labour



Source: Workmen's Compensation Fund, Social Security Office, Ministry of Labour

Wages in 2003³

**Monthly Income of all Employees and Construction Workers,
Whole Kingdom, Oct.-Dec. 2003**



Social Security Coverage in 2003⁴

About 86% of construction workers do not have social security coverage.

The main concerns among construction workers with no social security coverage are: job loss 31.9% and sickness 34.1%.

¹ Source: Report of the Labour Force Survey Whole Kingdom 2003, National Statistical Office.

² Source: Social Security Statistics, Office of the Workmen's Compensation Fund, Social Security Office, Ministry of Labour, Bangkok, 2004.

³ Source: An Analysis on wages, income and hours of work in 2003, Department of Labour Protection and Welfare, Ministry of Labour, Bangkok, November 2004.

⁴ Source: Thailand Social Security Priority and Needs Survey, International Labour Organization, Social Security Office, Ministry of Interior and National Statistics Office, Ministry of Information and Communication Technology, Bangkok, November 2004.

Source: Year Book of Labour Protection and Welfare Statistics 2003, Department of Labour Protection and Welfare, Ministry of Labour, Bangkok, August 2004.

Source: Thailand in Figures, 2003-2004, Alpha Research Co., Ltd., Bangkok, April 2004.