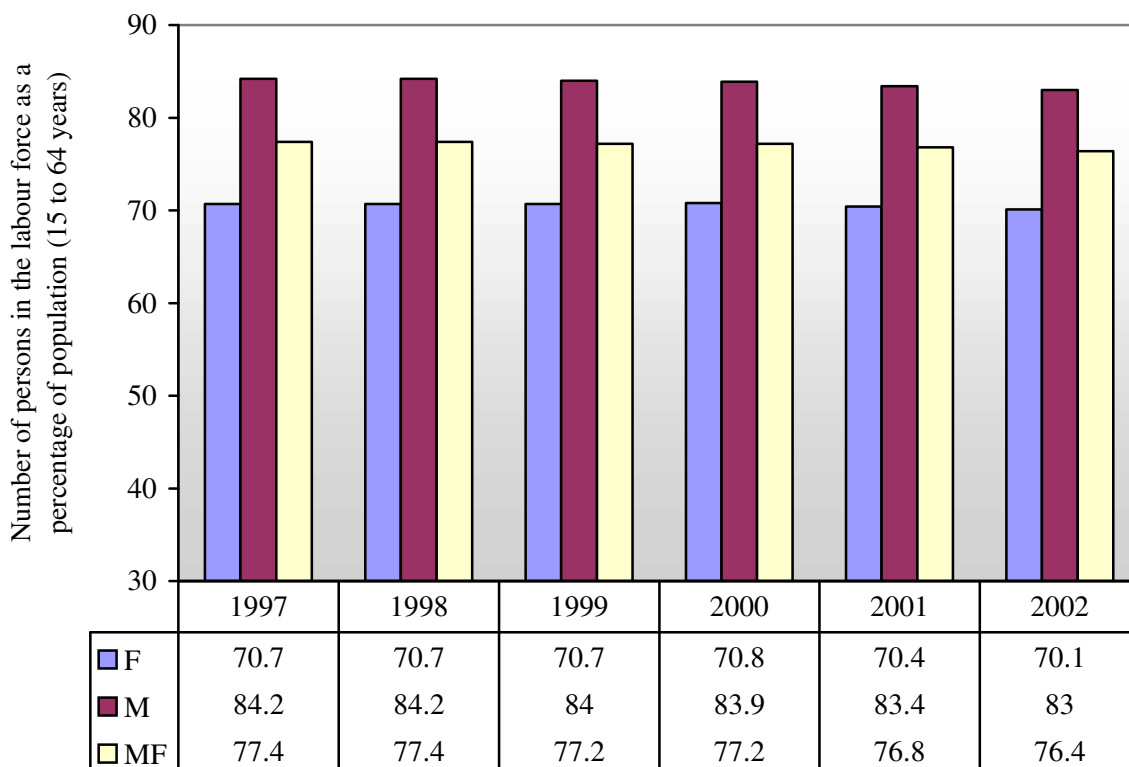


American Labour Force Participation Rate (KILM 1)



1. Source

ILO: 2003-2004 Key Indicators of the Labour Market (Geneva, 2003),
<http://www.ilo.org/kilm>

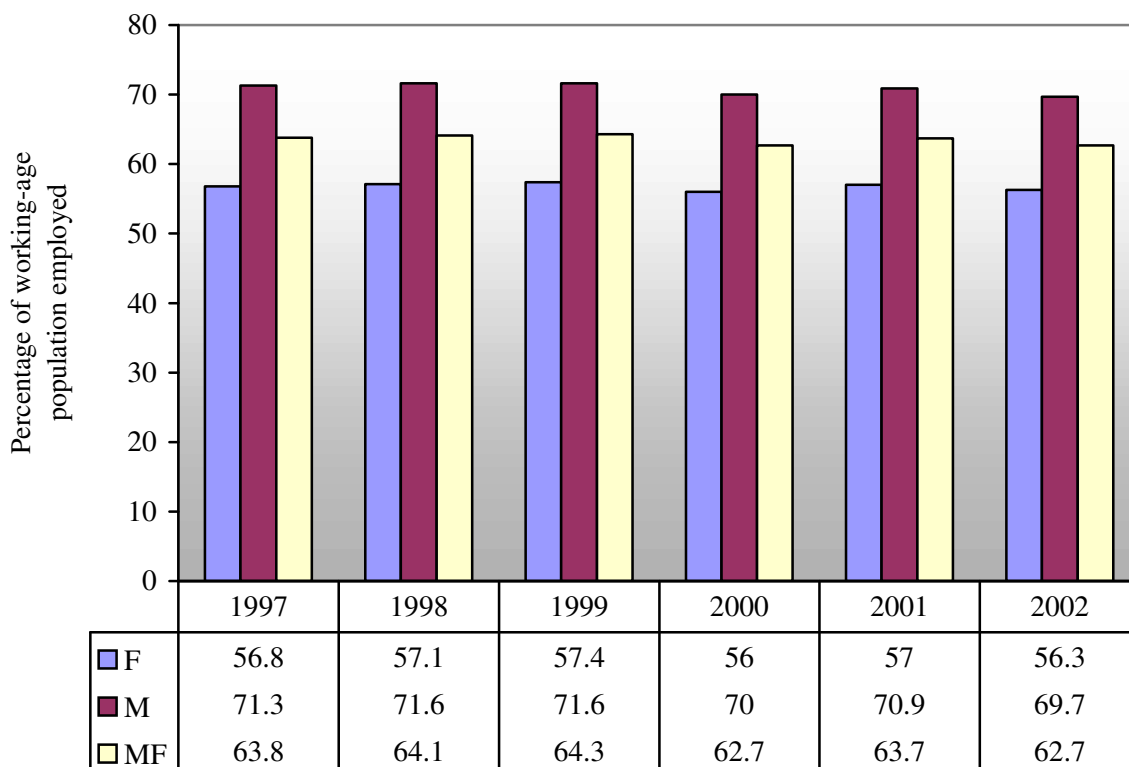
2. Type of source

HS Household or labour force survey

3. Symbols

MF Male and female, M Male, F Female

American Employment-to-Population Ratio (KILM 2)



1. Source

ILO: 2003-2004 Key Indicators of the Labour Market (Geneva, 2003),
<http://www.ilo.org/kilm>

2. Type of source

HS Household or labour force survey

3. Coverage

CE Civilian employment

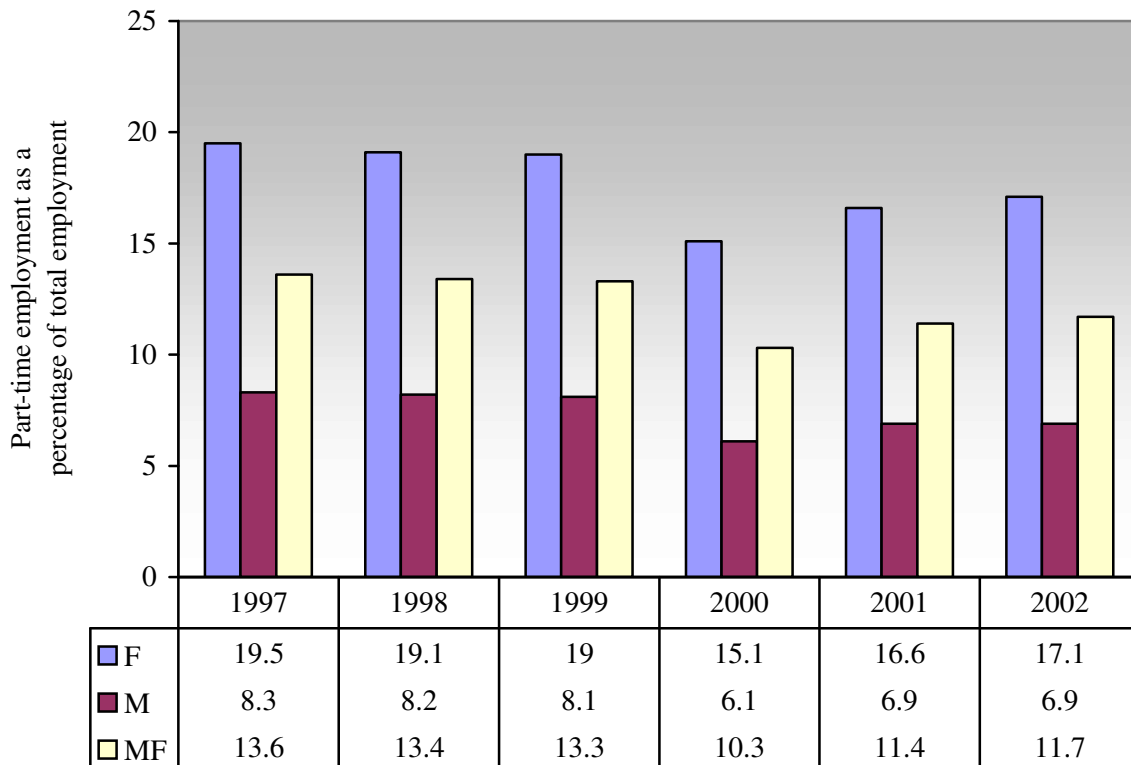
4. Age

The general age group is 15 years and over.

5. Symbols

MF Male and female, M Male, F Female

American Part-Time Workers (KILM 5)



1. Source

ILO: 2003-2004 Key Indicators of the Labour Market (Geneva, 2003),
<http://www.ilo.org/kilm>

2. Type of source

HS Household or labour force survey

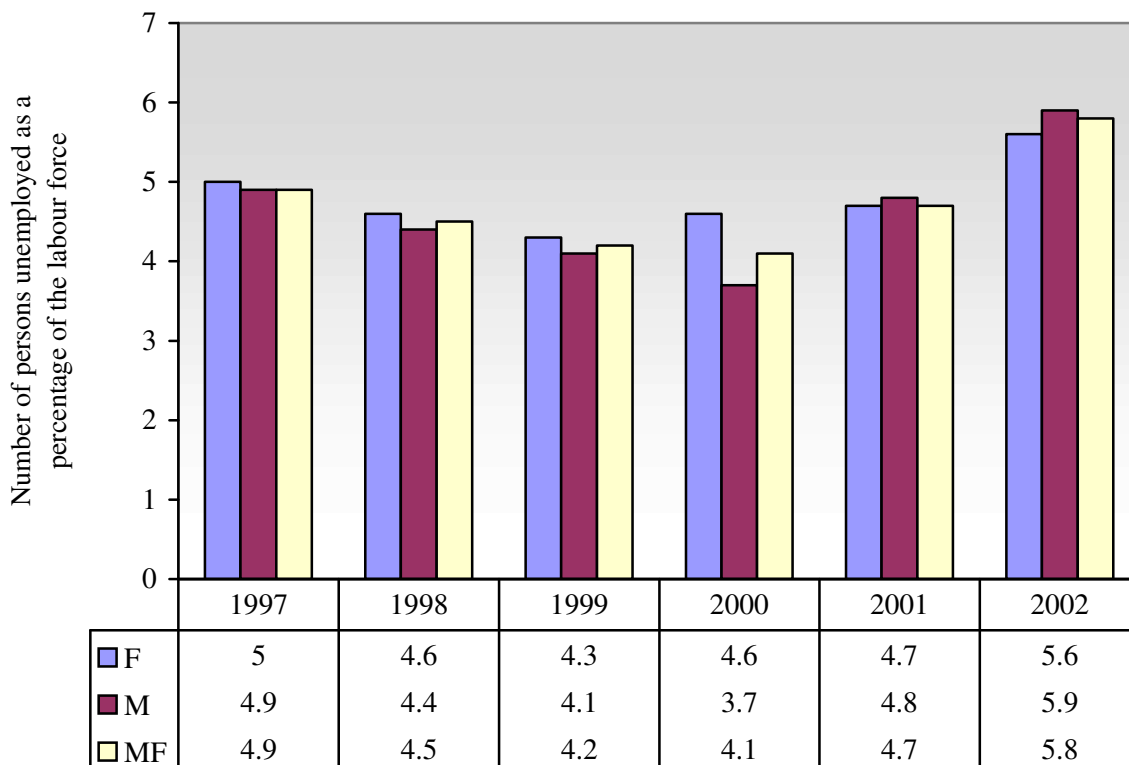
3. Coverage

EM Employees (wage earners and salaried employees)

4. Symbols

MF Male and female, M Male, F Female

American Unemployment Rate (KILM 8a)



1. Source

ILO: 2003-2004 Key Indicators of the Labour Market (Geneva, 2003),
<http://www.ilo.org/kilm>

2. Type of source

HS Household or labour force survey

3. Coverage

TUE Total unemployed

4. Symbols

MF Male and female, M Male, F Female