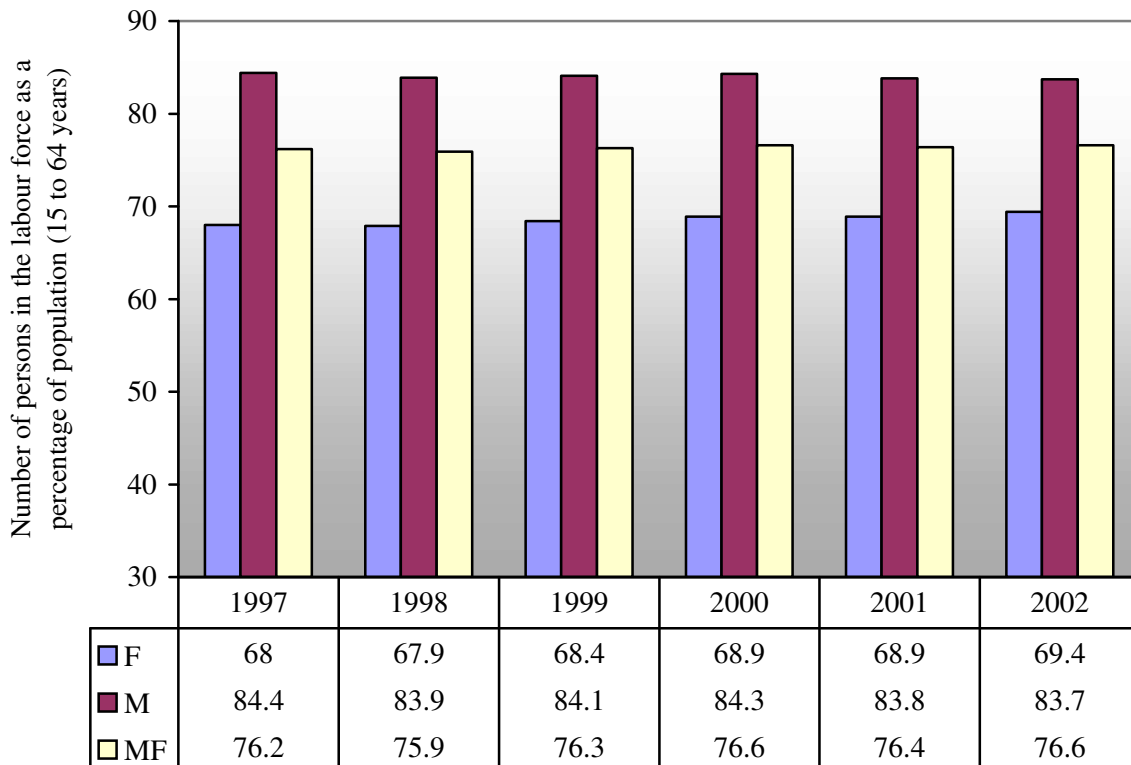


British Labour Force Participation Rate (KILM 1)



1. Source

ILO: 2003-2004 Key Indicators of the Labour Market (Geneva, 2003),
<http://www.ilo.org/kilm>

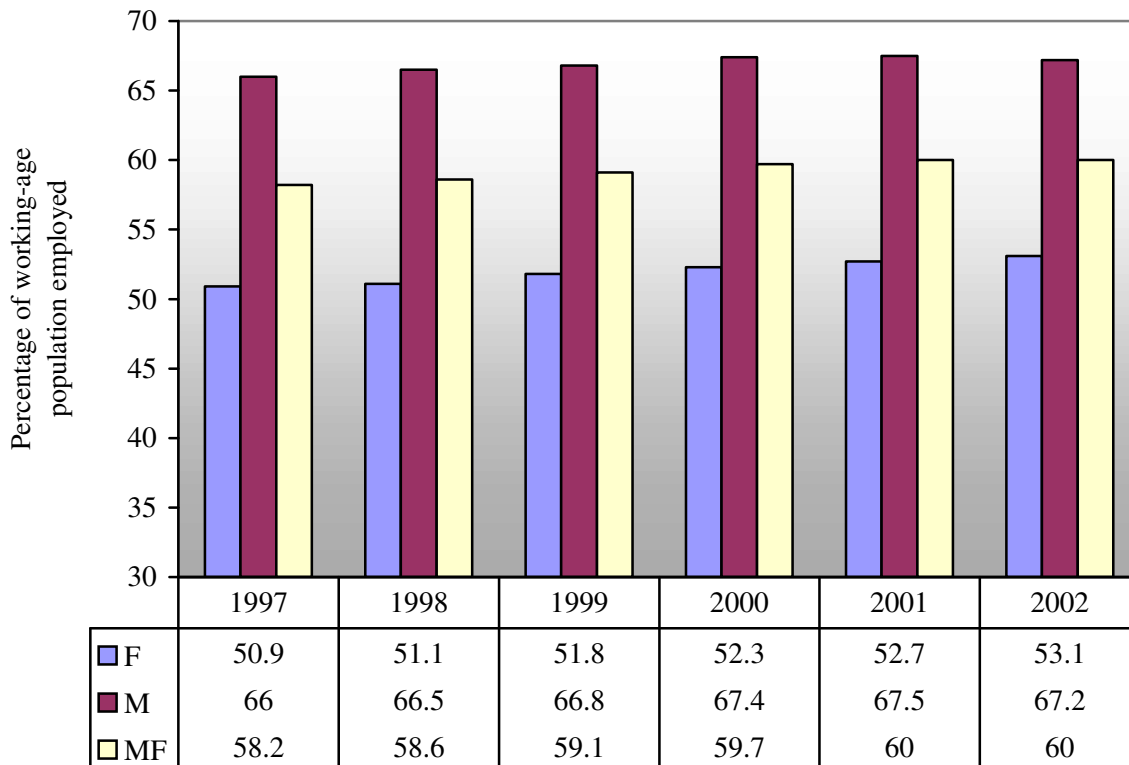
2. Type of source

HS Household or labour force survey

3. Symbols

MF Male and female, M Male, F Female

British Employment-to-Population Ratio (KILM 2)



1. Source

ILO: 2003-2004 Key Indicators of the Labour Market (Geneva, 2003),
<http://www.ilo.org/kilm>

2. Type of source

HS Household or labour force survey

3. Coverage

TE Total employment (employees, employers, own-account workers, members of producers' cooperatives, contributing family members and workers not classifiable by status)

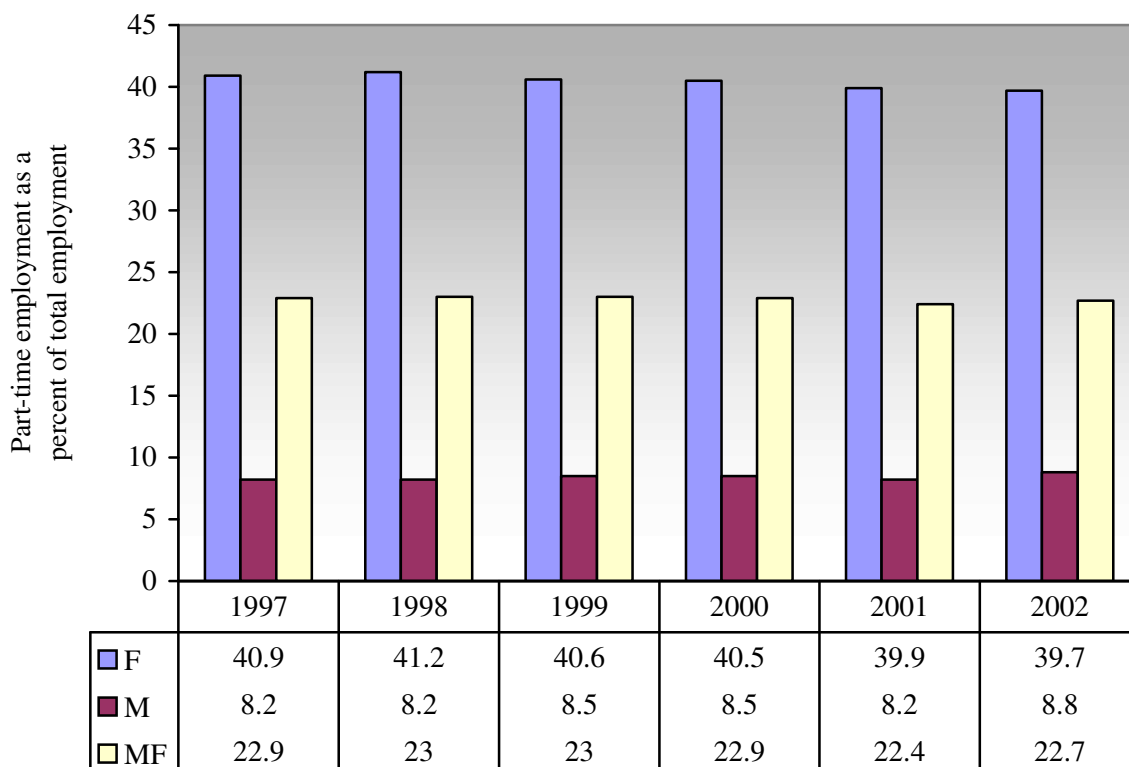
4. Age

The general age group is 15 years and over.

5. Symbols

MF Male and female, M Male, F Female

British Part-Time Workers (KILM 5)



1. Source

ILO: 2003-2004 Key Indicators of the Labour Market (Geneva, 2003),
<http://www.ilo.org/kilm>

2. Type of source

HS Household or labour force survey

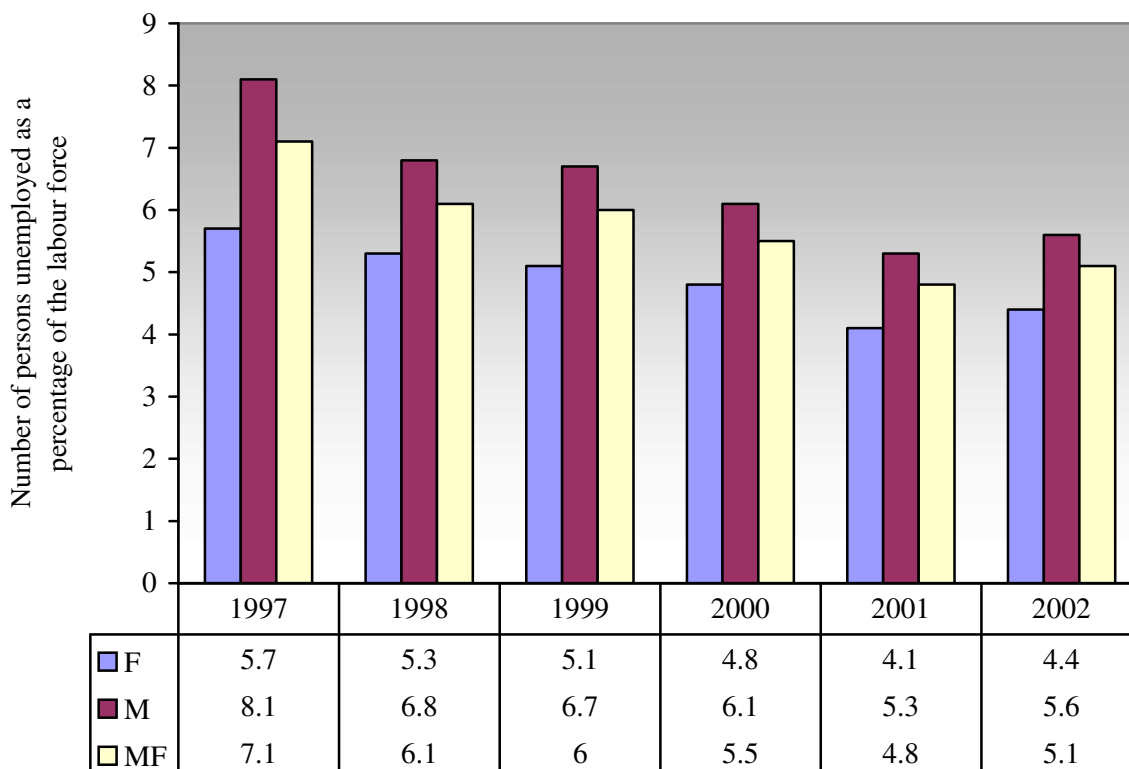
3. Coverage

TE Total employment (employees, employers, own-account workers, members of producers' cooperatives, contributing family members and workers not classifiable by status)

4. Symbols

MF Male and female, M Male, F Female

British Unemployment Rate (KILM 8a)



1. Source

ILO: 2003-2004 Key Indicators of the Labour Market (Geneva, 2003),
<http://www.ilo.org/kilm>

2. Type of source

HS Household or labour force survey

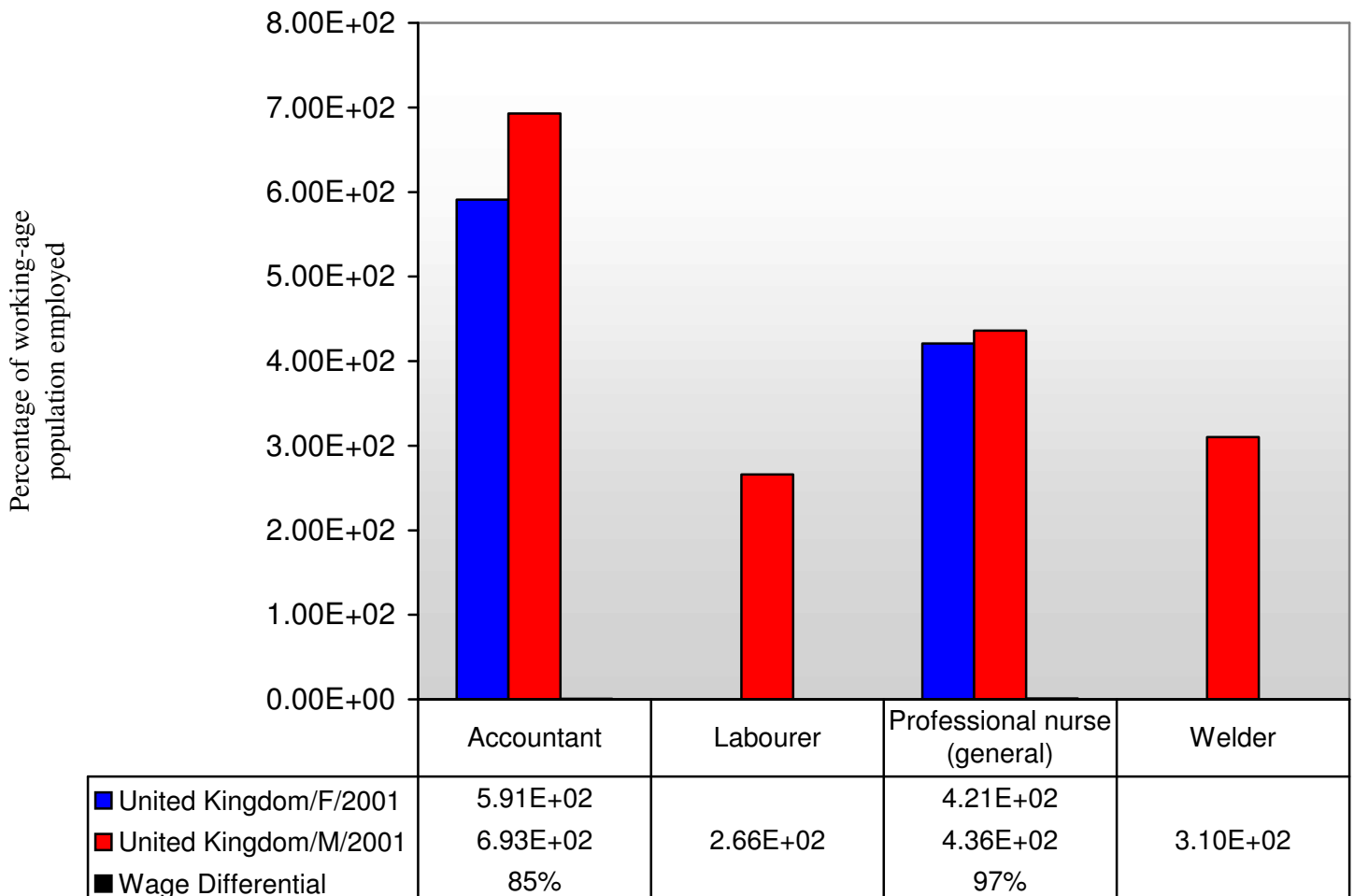
3. Coverage

TUE Total unemployed

4. Symbols

MF Male and female, M Male, F Female

**UNITED KINGDOM – Wages in National Currency for
Selected Occupations (KILM 16a)
Data year: 2001**



1. Source

ILO: 2003-2004 Key Indicators of the Labour Market (Geneva, 2003), <http://www.ilo.org/kilm>

2. Type of source

DA Labour-related establishment survey

3. Symbols

MF Male and female, M Male, F, Female

4. Note on formula

Wage differential = (F/M)*100