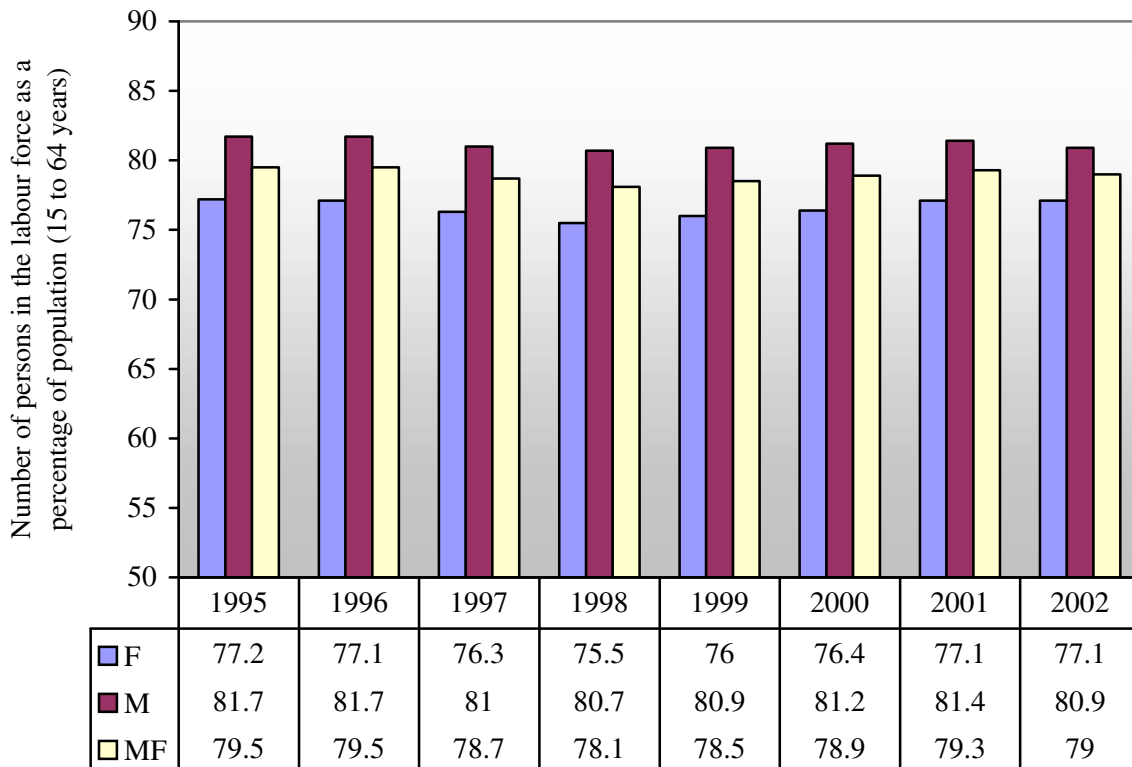


## Swedish Labour Force Participation Rate (KILM 1)



### 1. Source

ILO: 2003-2004 Key Indicators of the Labour Market (Geneva, 2003),  
<http://www.ilo.org/kilm>

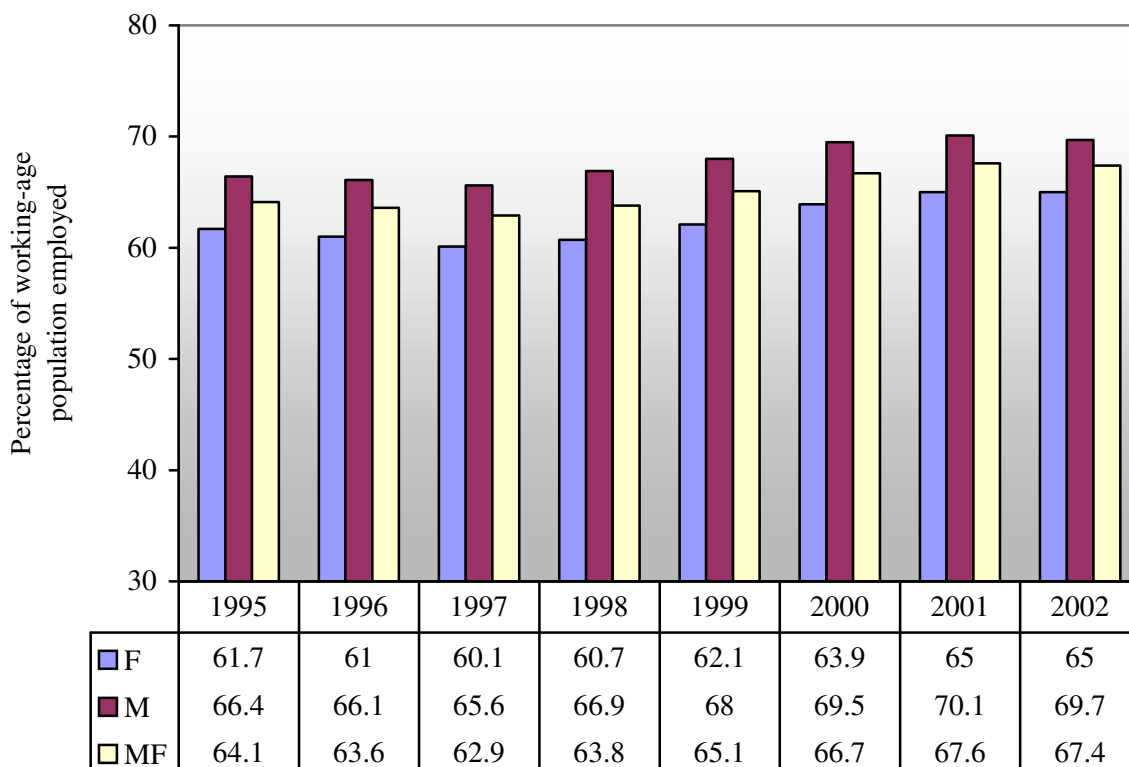
### 2. Type of source

HS Household or labour force survey

### 3. Symbols

MF Male and female, M Male, F Female

## Swedish Employment-to-Population Ratio (KILM 2)



### 1. Source

ILO: 2003-2004 Key Indicators of the Labour Market (Geneva, 2003),  
<http://www.ilo.org/kilm>

### 2. Type of source

HS Household or labour force survey

### 3. Coverage

TE Total employment (employees, employers, own-account workers, members of producers' cooperatives, contributing family members and workers not classifiable by status)

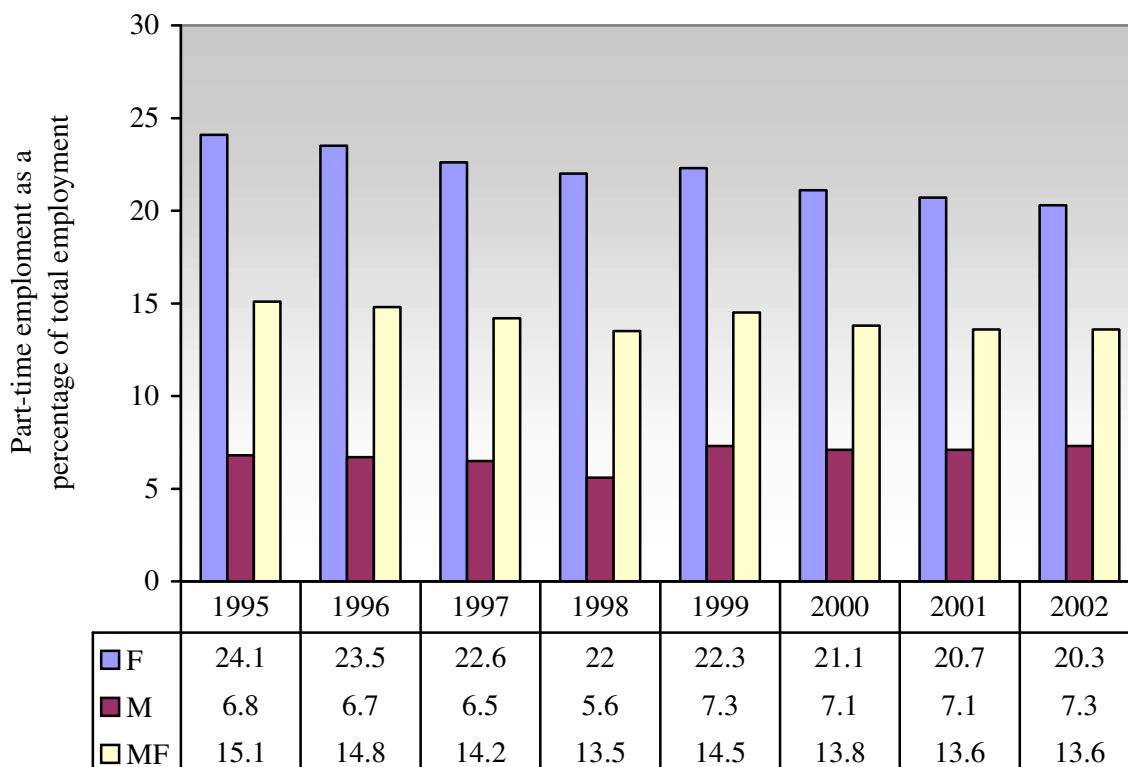
### 4. Age

The general age group is 15 years and over.

### 5. Symbols

MF Male and female, M Male, F Female

## Swedish Part-Time Workers (KILM 5)



### 1. Source

ILO: 2003-2004 Key Indicators of the Labour Market (Geneva, 2003),  
<http://www.ilo.org/kilm>

### 2. Type of source

HS Household or labour force survey

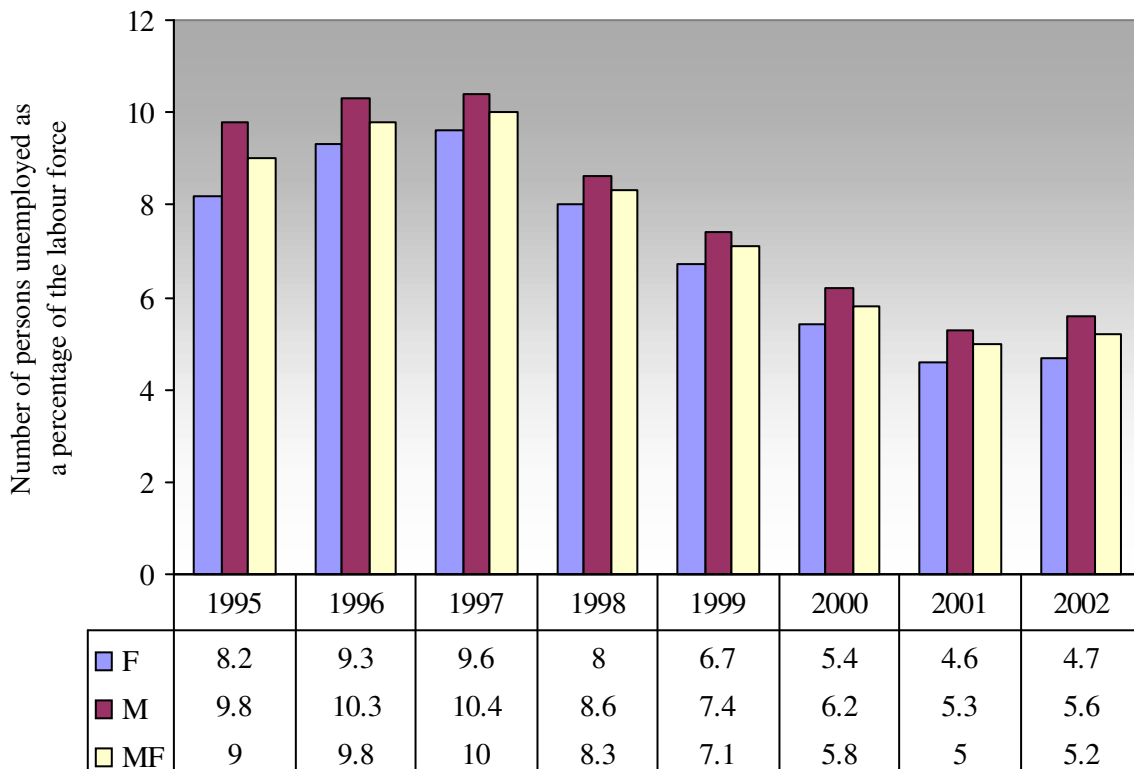
### 3. Coverage

TE Total employment (employees, employers, own-account workers, members of producers' cooperatives, contributing family members and workers not classifiable by status)

### 4. Symbols

MF Male and female, M Male, F Female

## Swedish Unemployment Rate (KILM 8a)



**1. Source**

ILO: 2003-2004 Key Indicators of the Labour Market (Geneva, 2003),  
<http://www.ilo.org/kilm>

**2. Type of source**

HS Household or labour force survey

**3. Coverage**

TUE Total unemployed

**4. Symbols**

MF Male and female, M Male, F Female