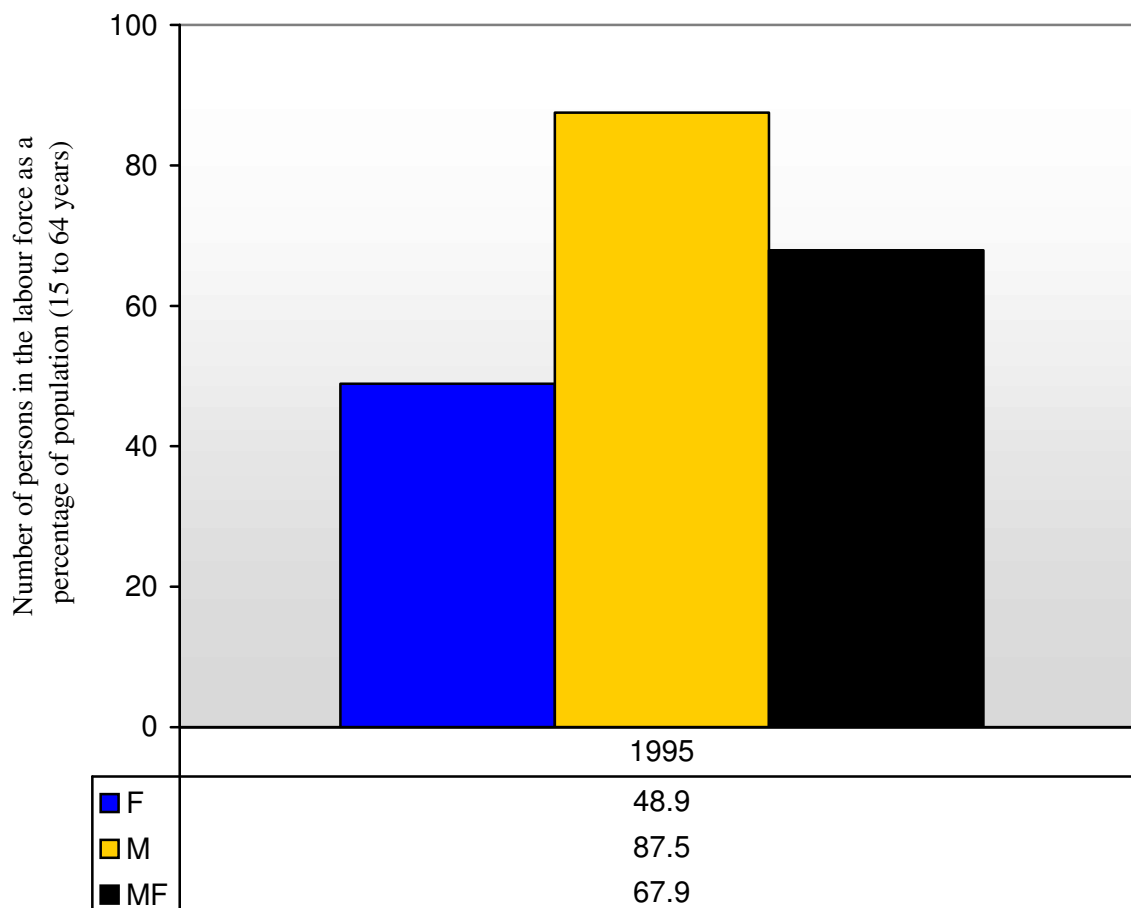


NIGERIA - Labour Force Participation Rate (KILM 1)



1. Source

ILO: 2003-2004 Key Indicators of the Labour Market (Geneva, 2003),
<http://www.ilo.org/kilm>

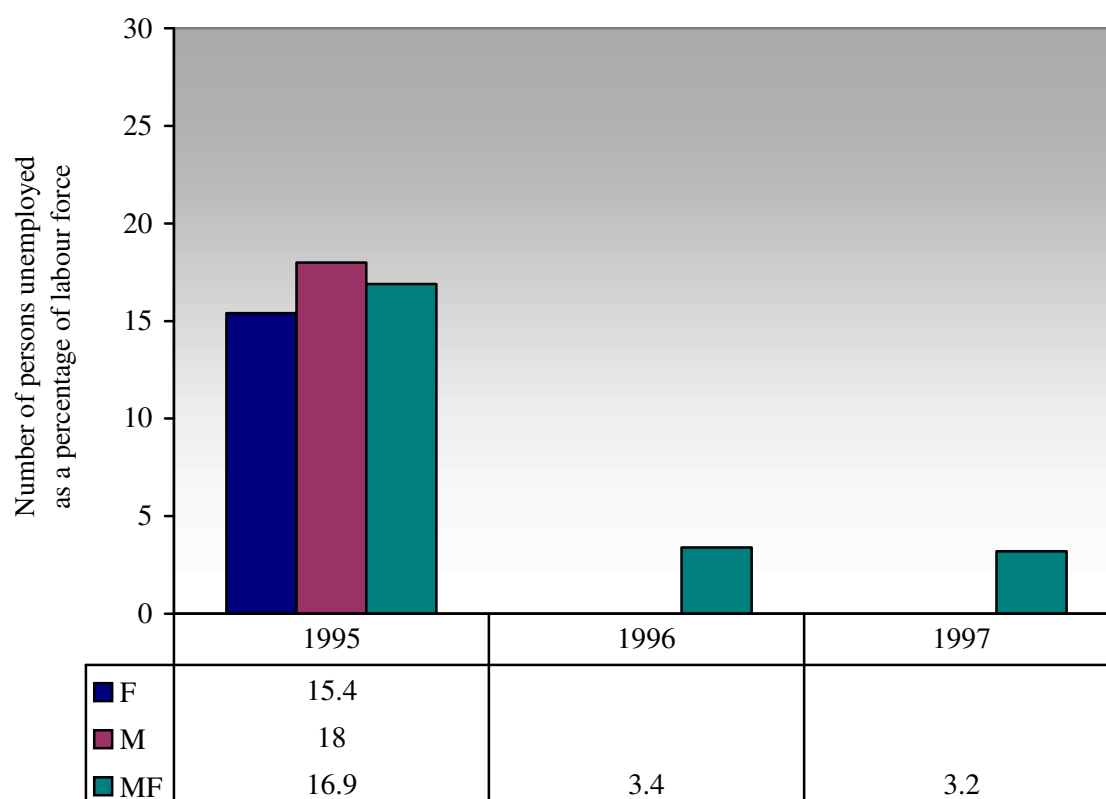
2. Type of source

HS Household or labour force survey

3. Symbols

MF Male and female, M Male, F Female

NIGERIA - Unemployment Rate (KILM 8a)



1. Source

ILO: 2003-2004 Key Indicators of the Labour Market (Geneva, 2003),
<http://www.ilo.org/kilm>

2. Type of source

HS Household or labour force survey

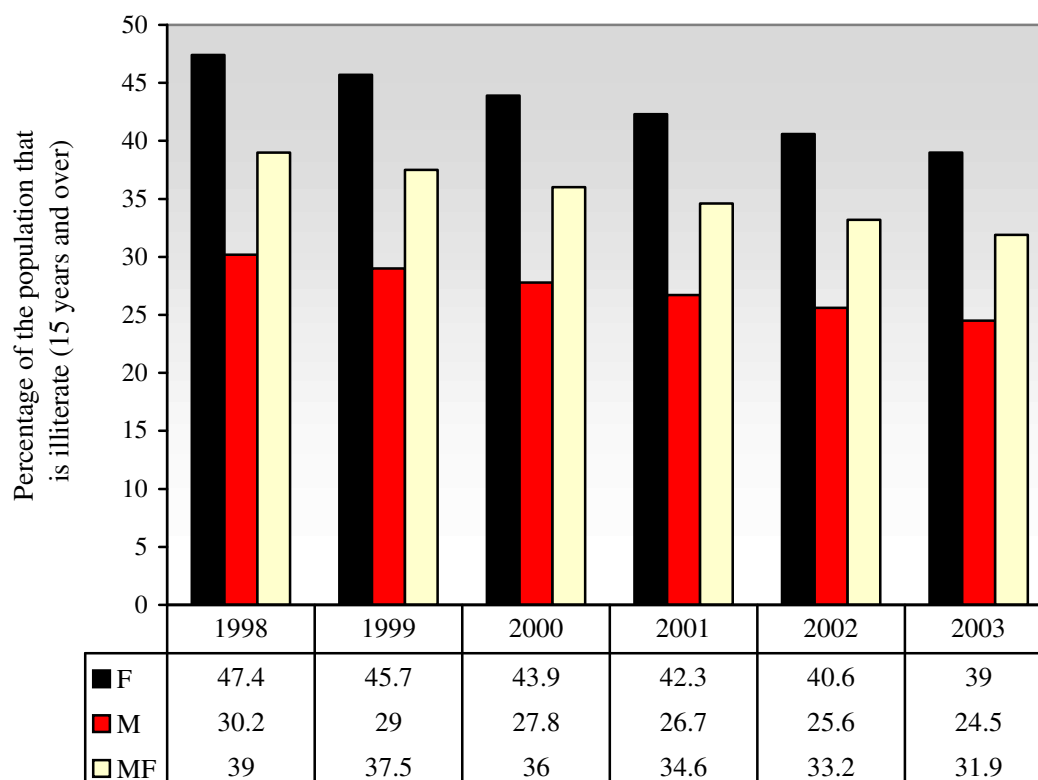
3. Coverage

TLF Total Labour Force

4. Symbols

MF Male and female, M Male, F Female

NIGERIA - Adult Illiteracy Rate (KILM 14c)
Previously KILM 14e



1. Source

ILO: 2003-2004 Key Indicators of the Labour Market (Geneva, 2003),
<http://www.ilo.org/kilm>

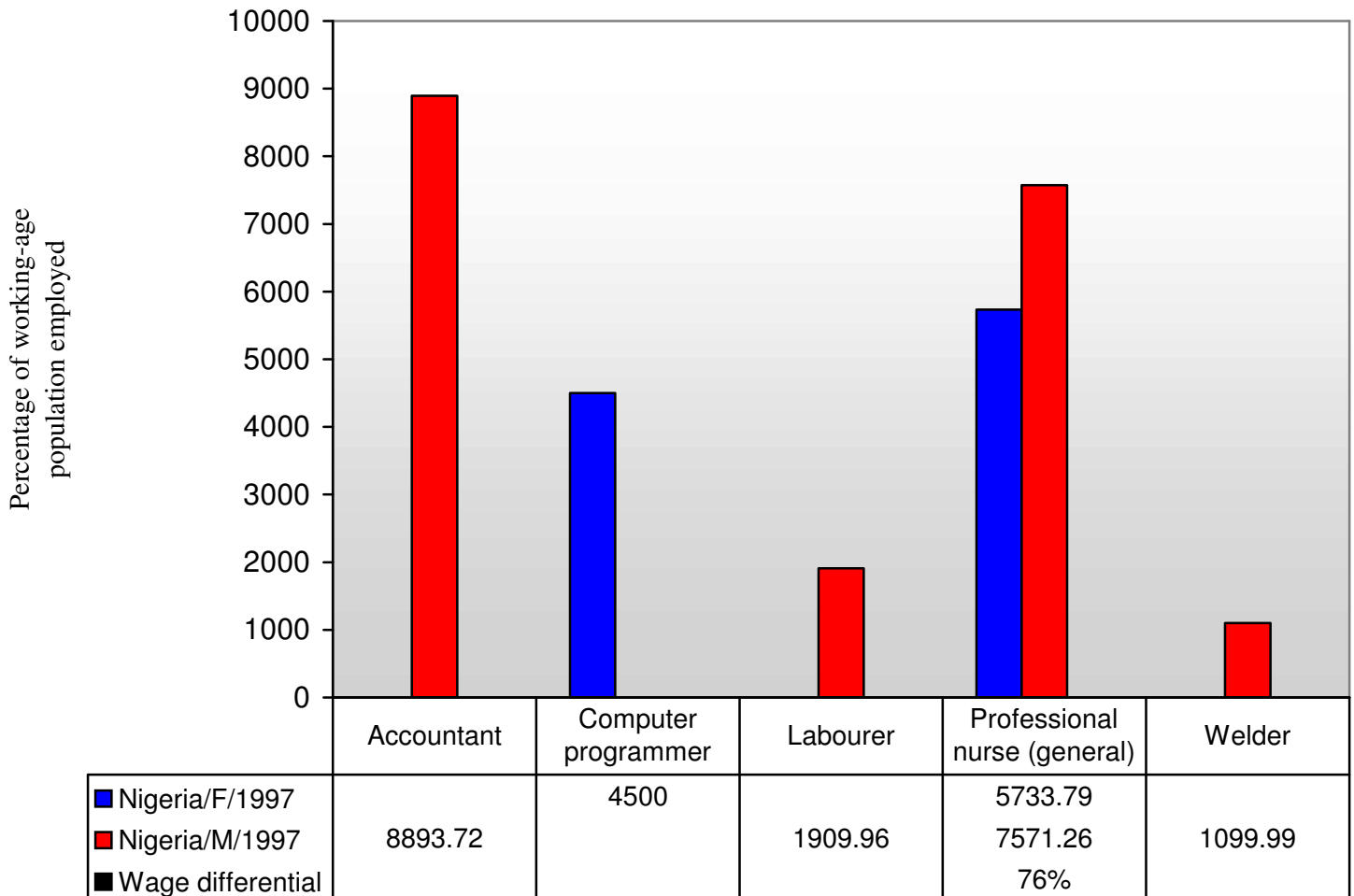
2. Symbols

M Male, F Female

3. Additional notes

The data from 1995 to 2001 are UNESCO literacy estimates as assessed in February 2000, based on statistics collected during national population censuses.

**NIGERIA – Wages in National Currency for
Selected Occupations (KILM 16a)**
Data year: 1997



1. Source

ILO: 2003-2004 Key Indicators of the Labour Market (Geneva, 2003), <http://www.ilo.org/kilm>

2. Type of source

DA Labour-related establishment survey

3. Symbols

MF Male and female, M Male, F, Female

4. Note on formula

Wage differential = (F/M)*100