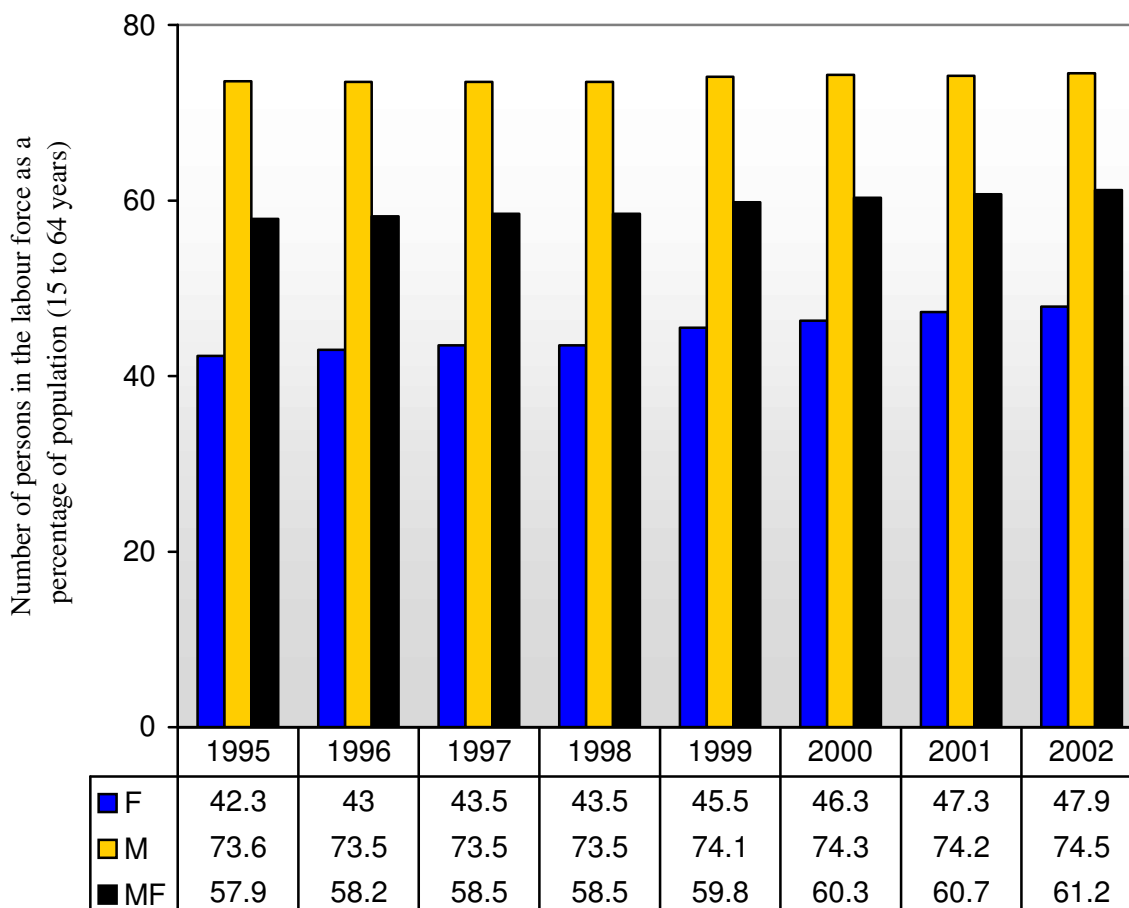


Italy - Labour Force Participation Rate (KILM 1)



1. Source

ILO: 2003-2004 Key Indicators of the Labour Market (Geneva, 2003),

<http://www.ilo.org/kilm>

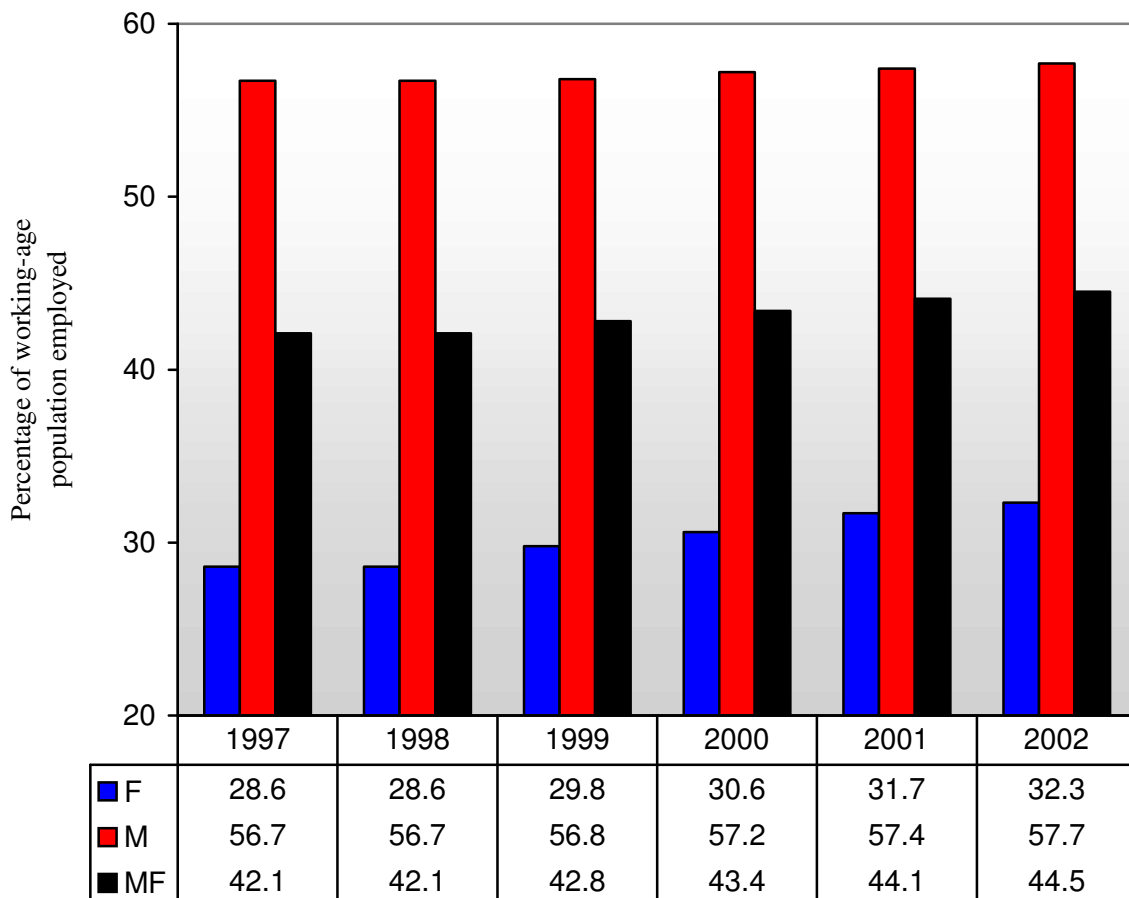
2. Type of source

HS Household or labour force survey

3. Symbols

MF Male and female, M Male, F Female

ITALY - Employment-to-Population Ratio (KILM 2)



1. Source

ILO: 2003-2004 Key Indicators of the Labour Market (Geneva, 2003),
<http://www.ilo.org/kilm>

2. Type of source

HS Household or labour force survey

3. Coverage

TE Total employment (employees, employers, own-account workers, members of producers' cooperatives, contributing family members and workers not classifiable by status)

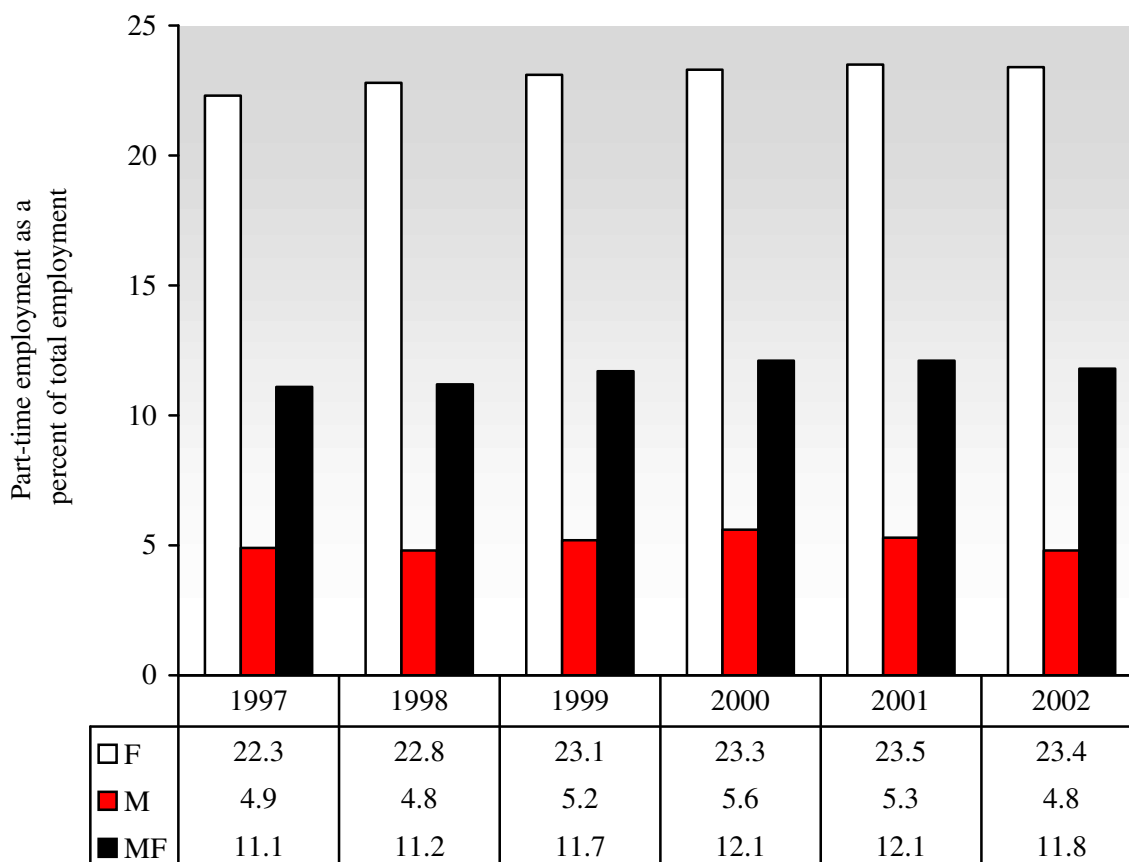
4. Age

The general age group is 15 years and over.

5. Symbols

MF Male and female, M Male, F, Female

ITALY - Part-Time Workers (KILM 5)



1. Source

ILO: 2003-2004 Key Indicators of the Labour Market (Geneva, 2003),
<http://www.ilo.org/kilm>

2. Type of source

HS Household or labour force survey

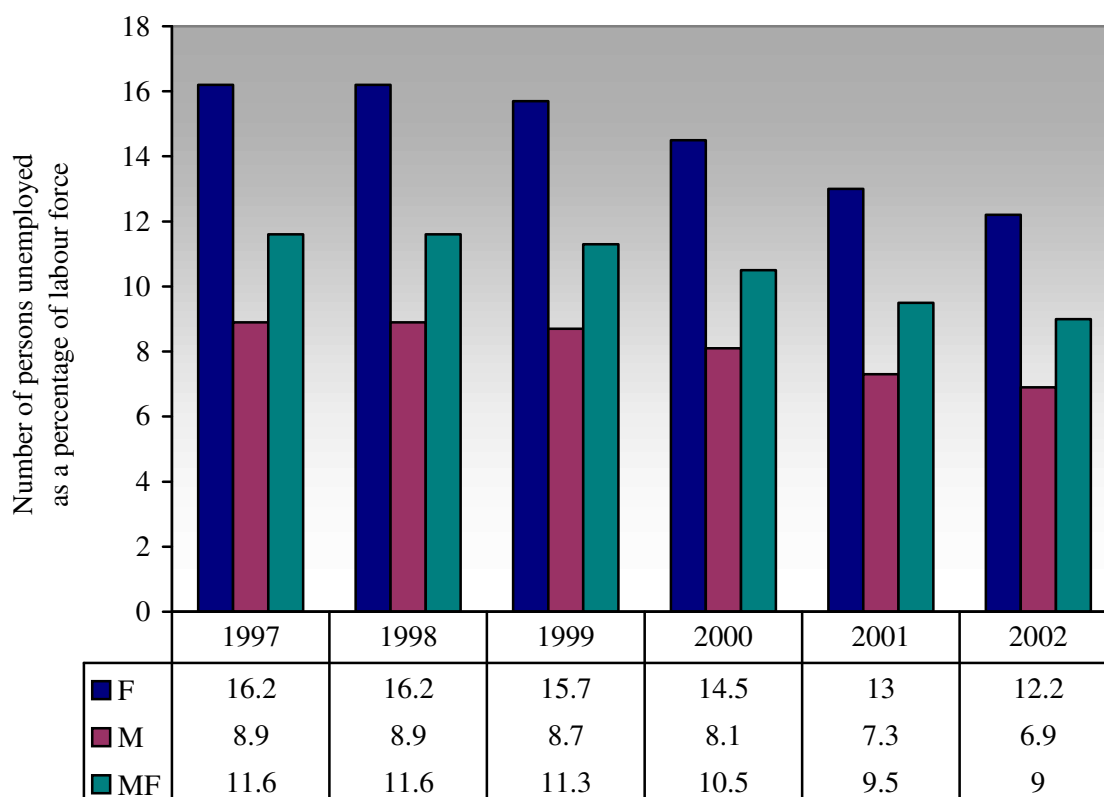
3. Coverage

TE Total employment (employees, employers, own-account workers, members of producers' cooperatives, contributing family members and workers not classifiable by status)

4. Symbols

MF Male and female, M Male, F Female

ITALY - Unemployment Rate (KILM 8a)



1. Source

ILO: 2003-2004 Key Indicators of the Labour Market (Geneva, 2003),
<http://www.ilo.org/kilm>

2. Type of source

HS Household or labour force survey

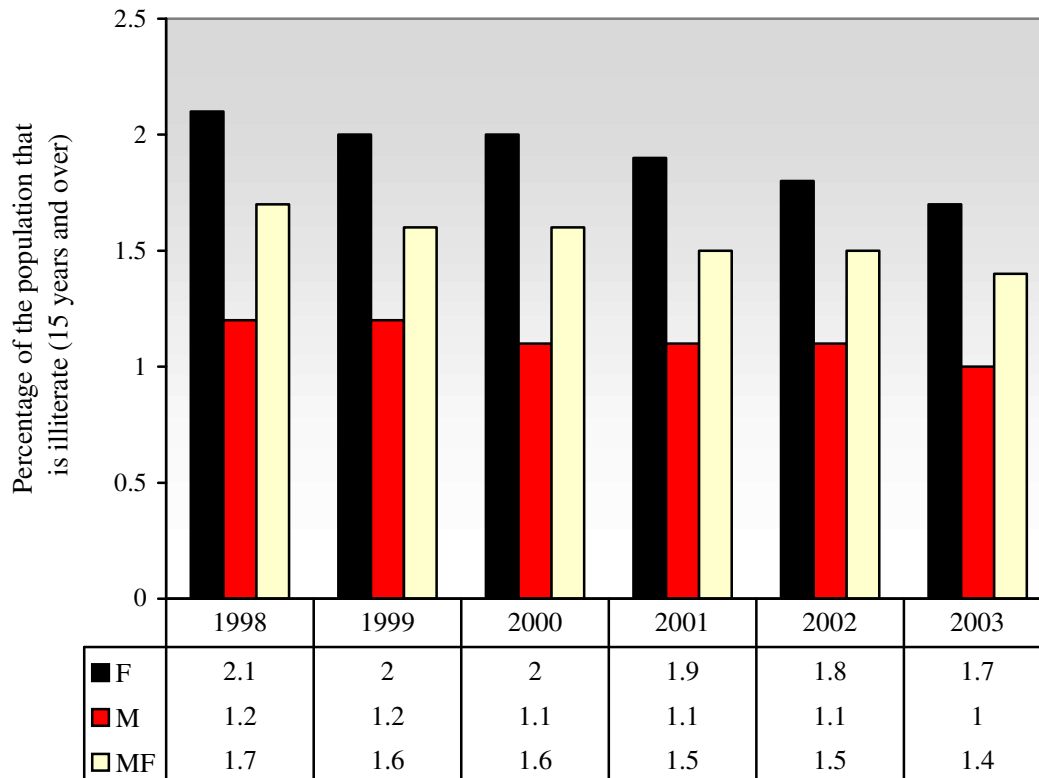
3. Coverage

TLF Total Labour Force

4. Symbols

MF Male and female, M Male, F Female

ITALY - Adult Illiteracy Rate (KILM 14c)
Previously KILM 14e



1. Source

ILO: 2003-2004 Key Indicators of the Labour Market (Geneva, 2003),
<http://www.ilo.org/kilm>

2. Symbols

M Male, F Female

3. Additional notes

The data from 1995 to 2001 are UNESCO literacy estimates as assessed in February 2000, based on statistics collected during national population censuses.