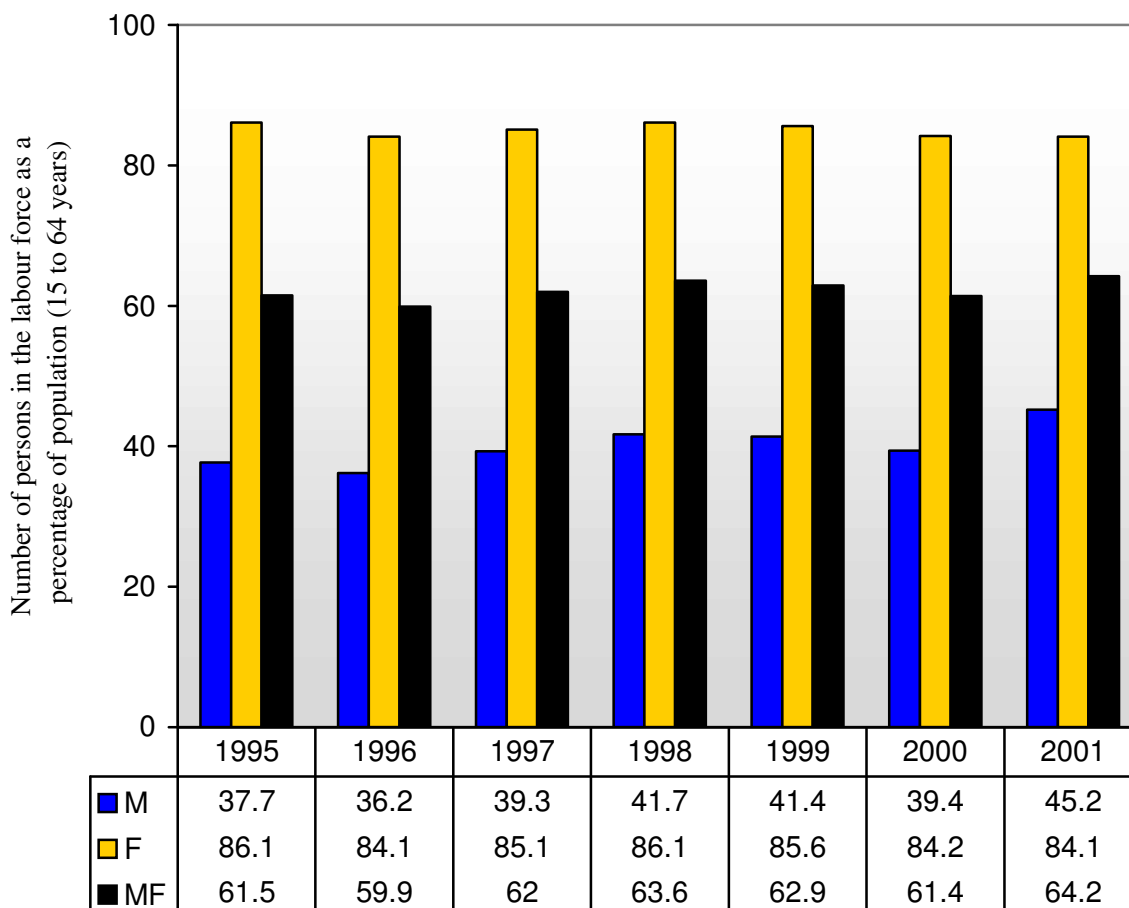


## Costa Rica - Labour Force Participation Rate (KILM 1)



### 1. Source

ILO: 2003-2004 Key Indicators of the Labour Market (Geneva, 2003),

<http://www.ilo.org/kilm>

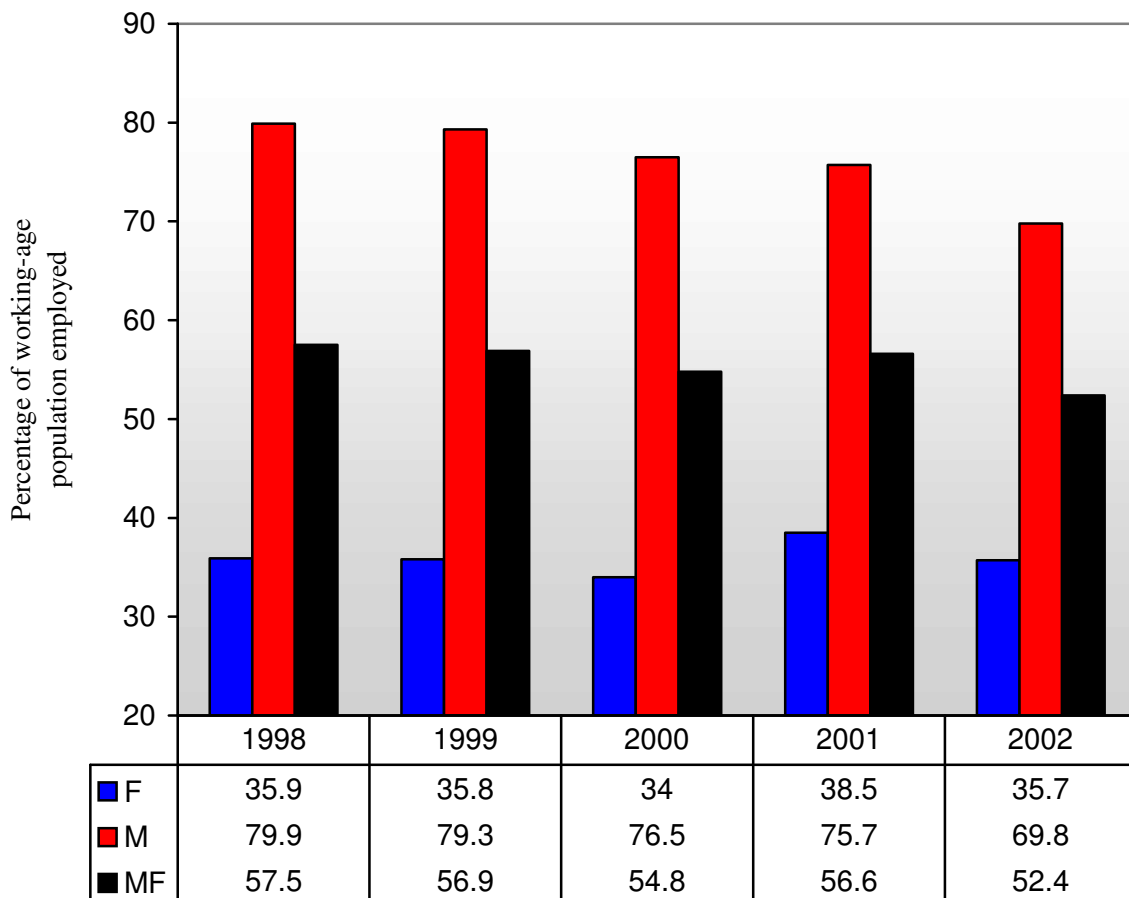
### 2. Type of source

HS Household or labour force survey

### 3. Symbols

MF Male and female, M Male, F Female

## Costa Rica - Employment-to-Population Ratio (KILM 2)



**1. Source**

ILO: 2003-2004 Key Indicators of the Labour Market (Geneva, 2003),  
<http://www.ilo.org/kilm>

**2. Type of source**

HS Household or labour force survey

**3. Coverage**

TE Total employment (employees, employers, own-account workers, members of producers' cooperatives, contributing family members and workers not classifiable by status)

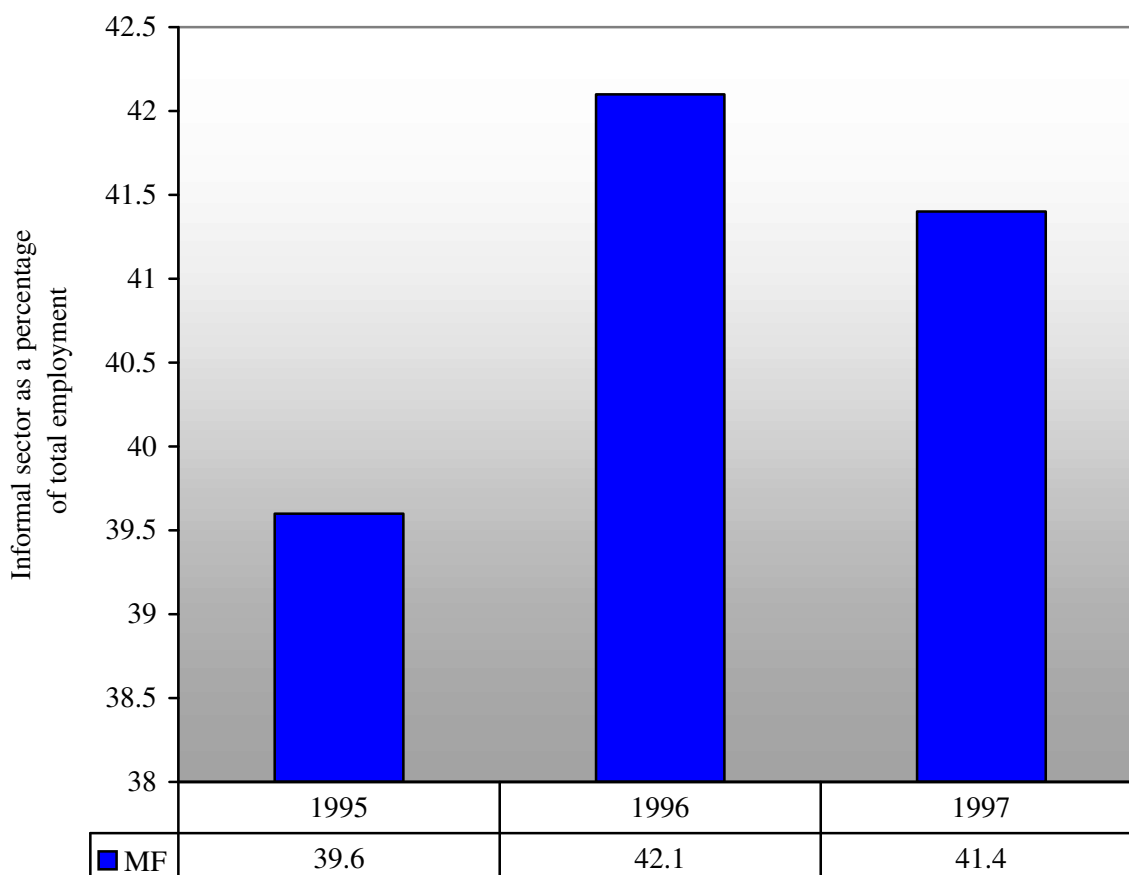
**4. Age**

The general age group is 15 years and over.

**5. Symbols**

MF Male and female, M Male, F, Female

**COSTA RICA - Informal Sector Employment (KILM indicator 7d)**  
Previously KILM 7



**1. Source**

ILO: 2003-2004 Key Indicators of the Labour Market (Geneva, 2003),  
<http://www.ilo.org/kilm>

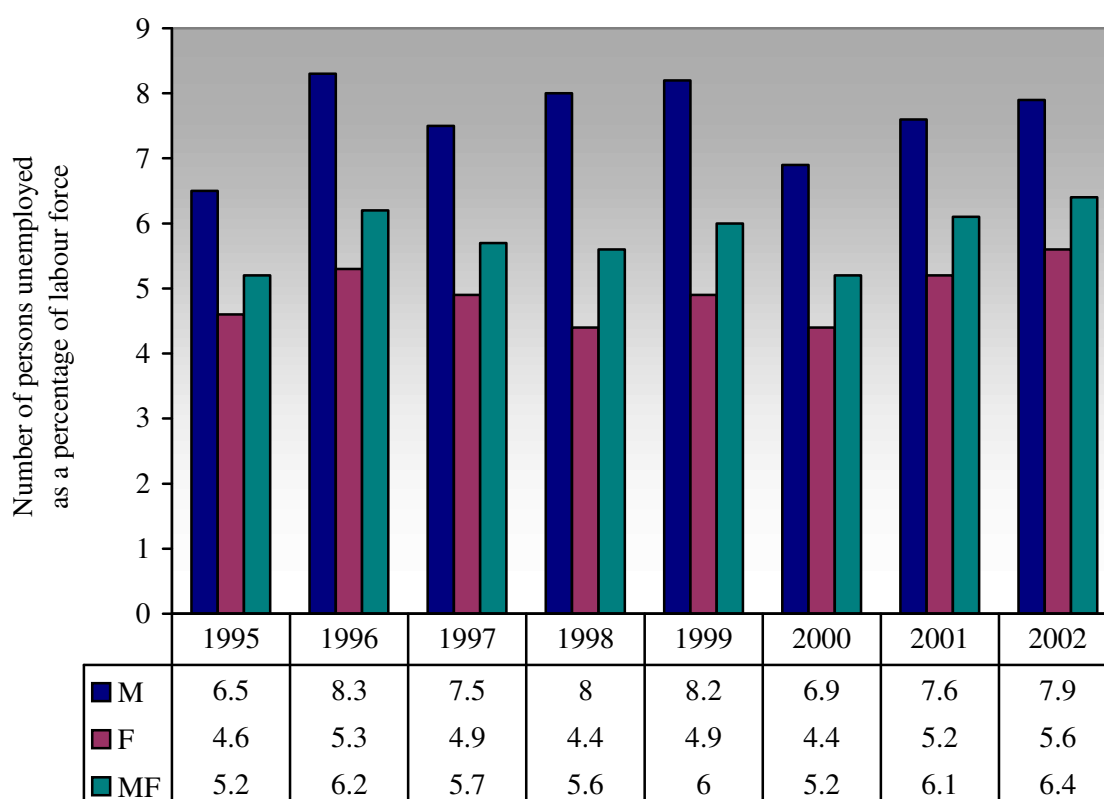
**2. Coverage**

Geographical: All urban areas are covered unless otherwise noted.  
Industrial: All industries are covered unless otherwise noted.

**3. Symbols**

MF Male and female, M Male, F Female

## Costa Rica - Unemployment Rate (KILM 8a)



### 1. Source

ILO: 2003-2004 Key Indicators of the Labour Market (Geneva, 2003),  
<http://www.ilo.org/kilm>

### 2. Type of source

HS Household or labour force survey

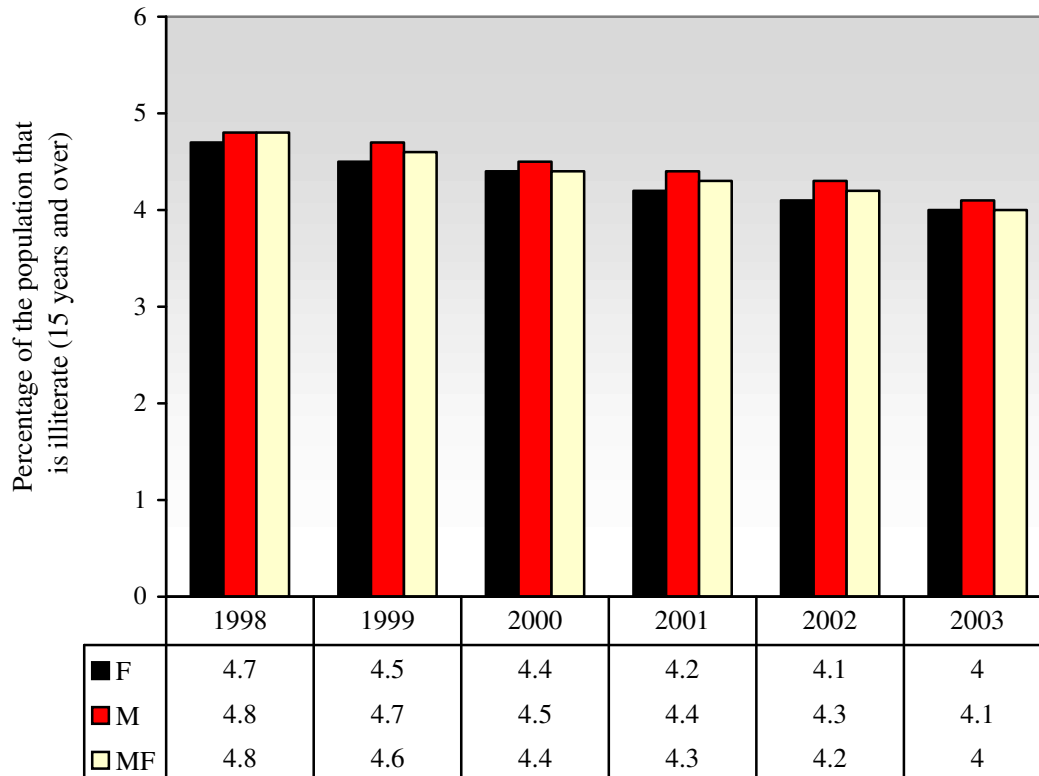
### 3. Coverage

TLF Total Labour Force

### 4. Symbols

MF Male and female, M Male, F Female

Costa Rica - Adult Illiteracy Rate (KILM 14c)  
Previously KILM 14e



**1. Source**

ILO: 2003-2004 Key Indicators of the Labour Market (Geneva, 2003),  
<http://www.ilo.org/kilm>

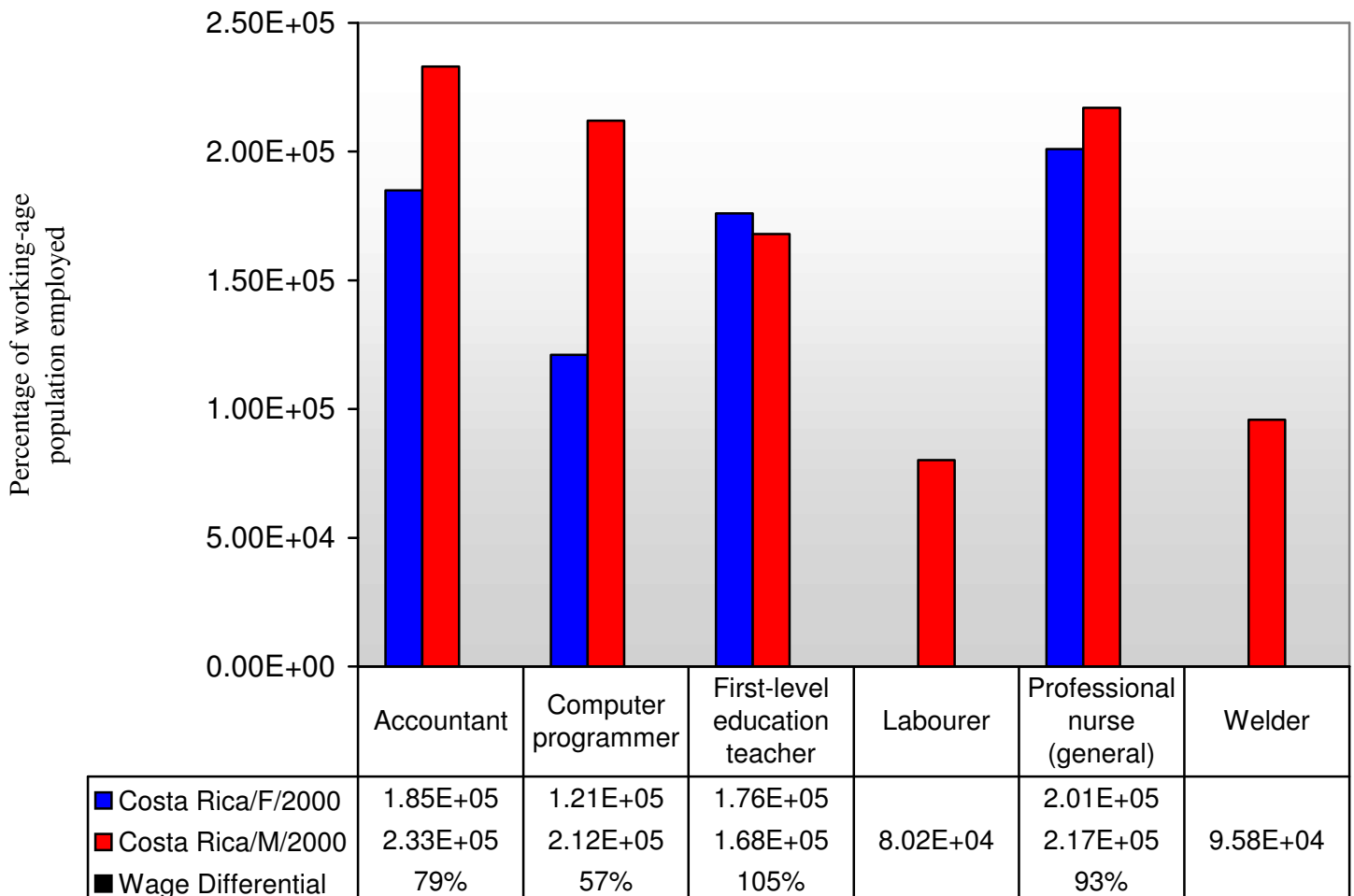
**2. Symbols**

M Male, F Female

**3. Additional notes**

The data from 1995 to 2001 are UNESCO literacy estimates as assessed in February 2000, based on statistics collected during national population censuses.

COSTA RICA – Wages in National Currency for  
Selected Occupations (KILM 16a)  
**Data year: 2000**



**1. Source**

ILO: 2003-2004 Key Indicators of the Labour Market (Geneva, 2003), <http://www.ilo.org/kilm>

**2. Type of source**

DA Labour-related establishment survey

**3. Symbols**

MF Male and female, M Male, F, Female

**4. Note on formula**

Wage differential = (F/M)\*100

