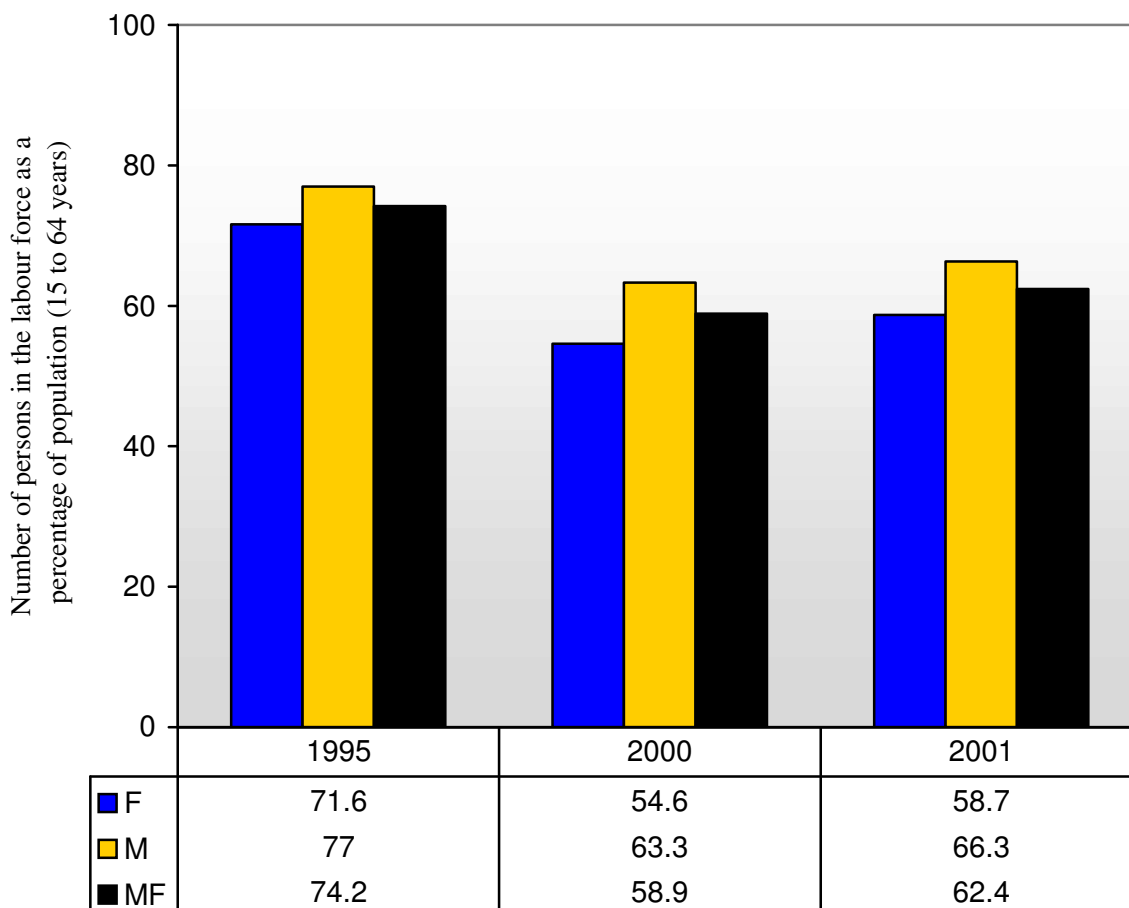


## Bulgaria - Labour Force Participation Rate (KILM 1)



### 1. Source

ILO: 2003-2004 Key Indicators of the Labour Market (Geneva, 2003),

<http://www.ilo.org/kilm>

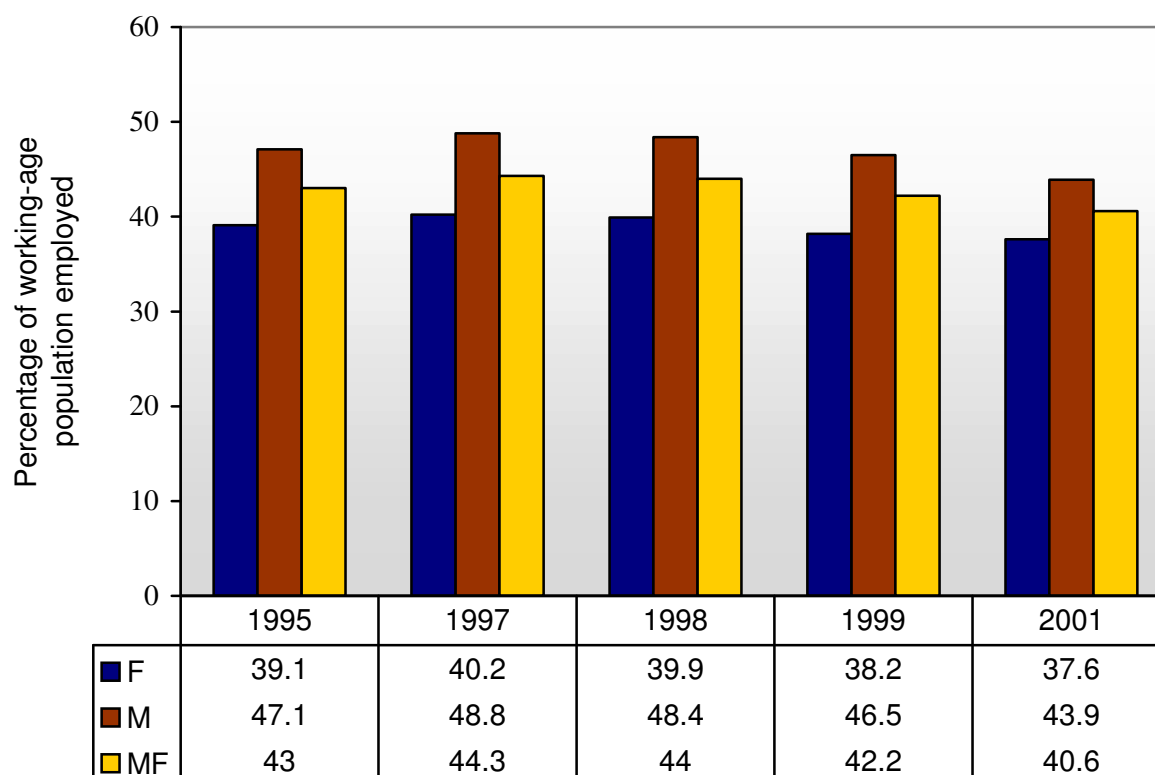
### 2. Type of source

HS Household or labour force survey

### 3. Symbols

MF Male and female, M Male, F Female

## Bulgarian Employment-to-Population Ratio (KILM 2)



### 1. Source

ILO: 2003-2004 Key Indicators of the Labour Market (Geneva, 2003),  
<http://www.ilo.org/kilm>

### 2. Type of source

HS Household or labour force survey

### 3. Coverage

TE Total employment (employees, employers, own-account workers, members of producers' cooperatives, contributing family members and workers not classifiable by status)

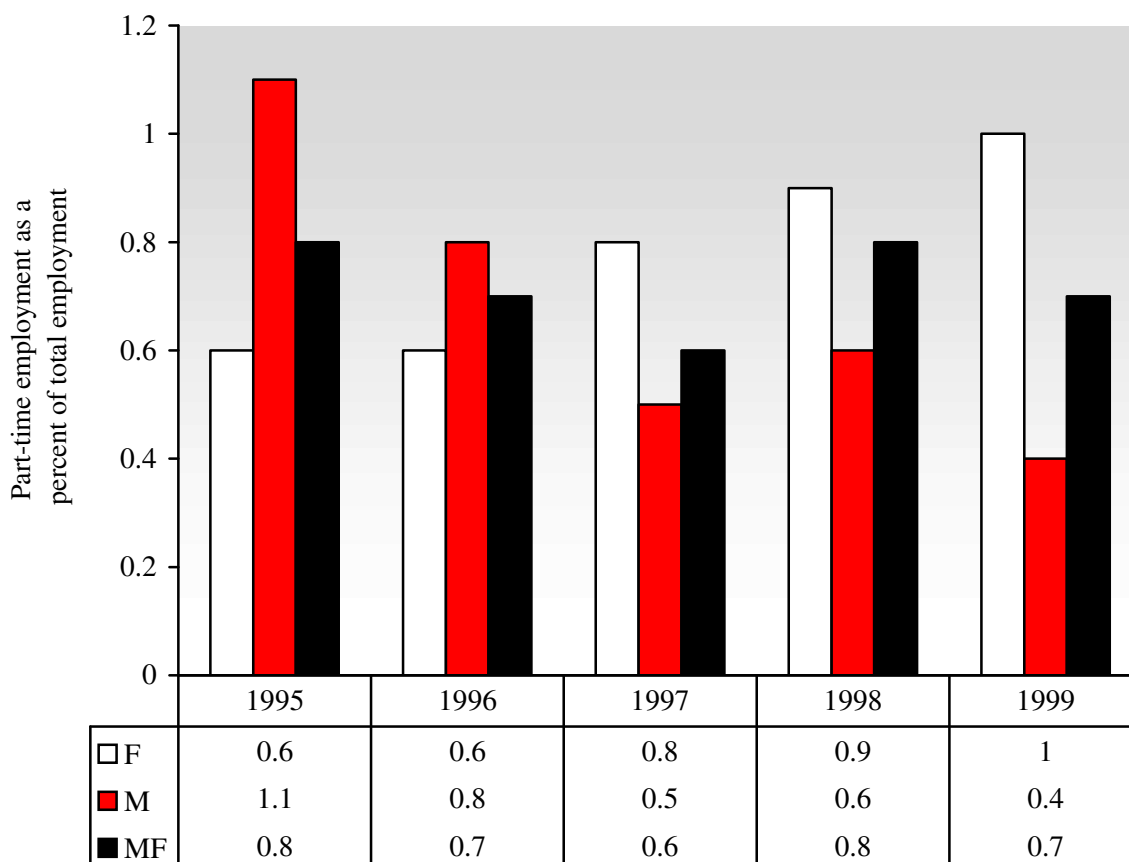
### 4. Age

The general age group is 15 years and over.

### 5. Symbols

MF Male and female, M Male, F Female

## BULGARIA - Part-Time Workers (KILM 5)



### 1. Source

ILO: 2003-2004 Key Indicators of the Labour Market (Geneva, 2003),  
<http://www.ilo.org/kilm>

### 2. Type of source

HS Household or labour force survey

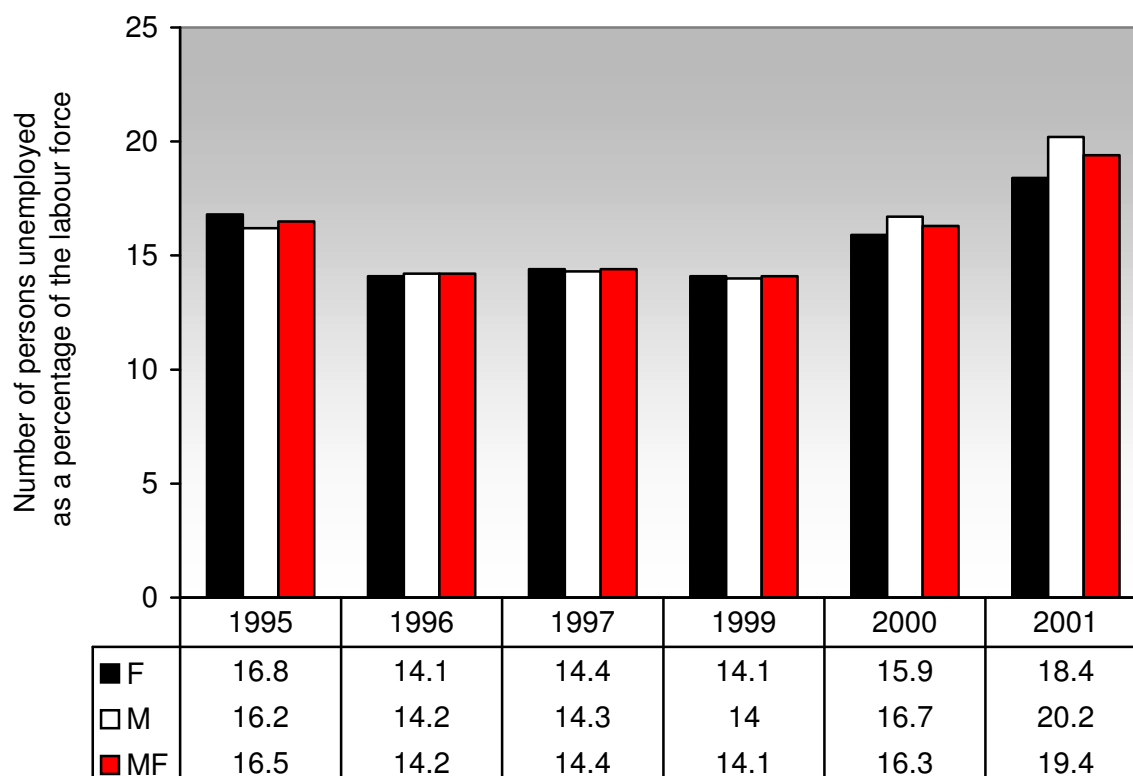
### 3. Coverage

TE Total employment (employees, employers, own-account workers, members of producers' cooperatives, contributing family members and workers not classifiable by status)

### 4. Symbols

MF Male and female, M Male, F Female

## Bulgarian Unemployment Rate (KILM 8a)



### 1. Source

ILO: 2003-2004 Key Indicators of the Labour Market (Geneva, 2003),  
<http://www.ilo.org/kilm>

### 2. Type of source

HS Household or labour force survey

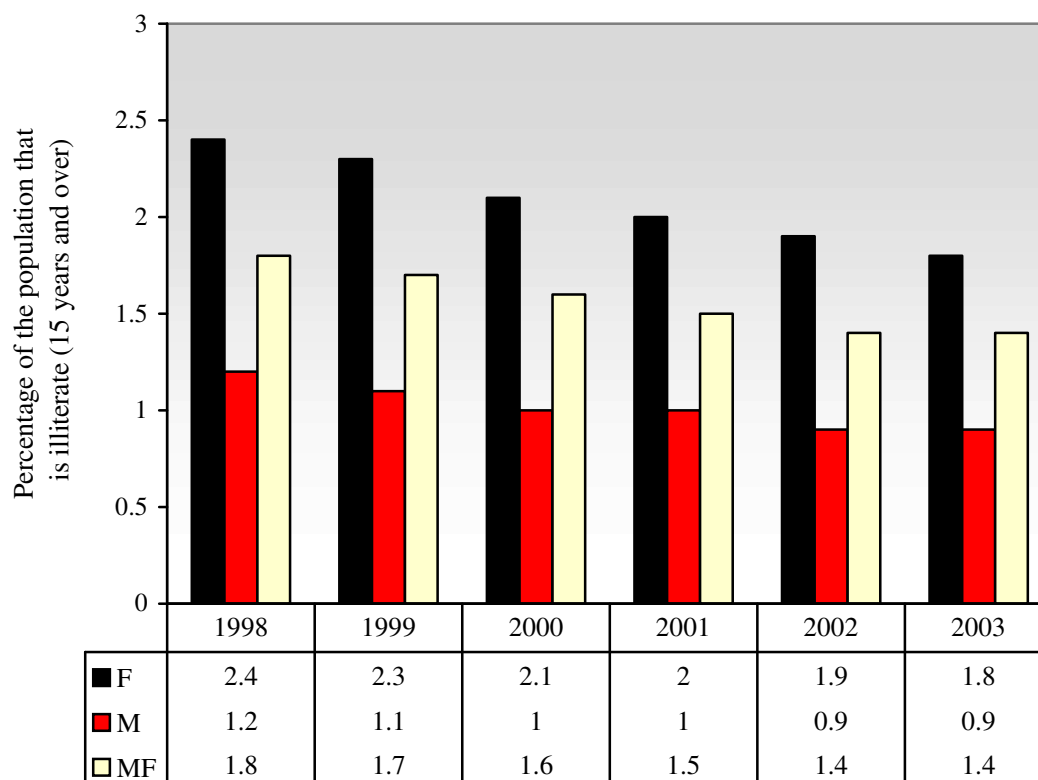
### 3. Coverage

TUE Total unemployed

### 4. Symbols

MF Male and female, M Male, F Female

**BULGARIA - Adult Illiteracy Rate (KILM 14c)**  
Previously KILM 14e



**1. Source**

ILO: 2003-2004 Key Indicators of the Labour Market (Geneva, 2003),  
<http://www.ilo.org/kilm>

**2. Symbols**

M Male, F Female

**3. Additional notes**

The data from 1995 to 2001 are UNESCO literacy estimates as assessed in February 2000, based on statistics collected during national population censuses.