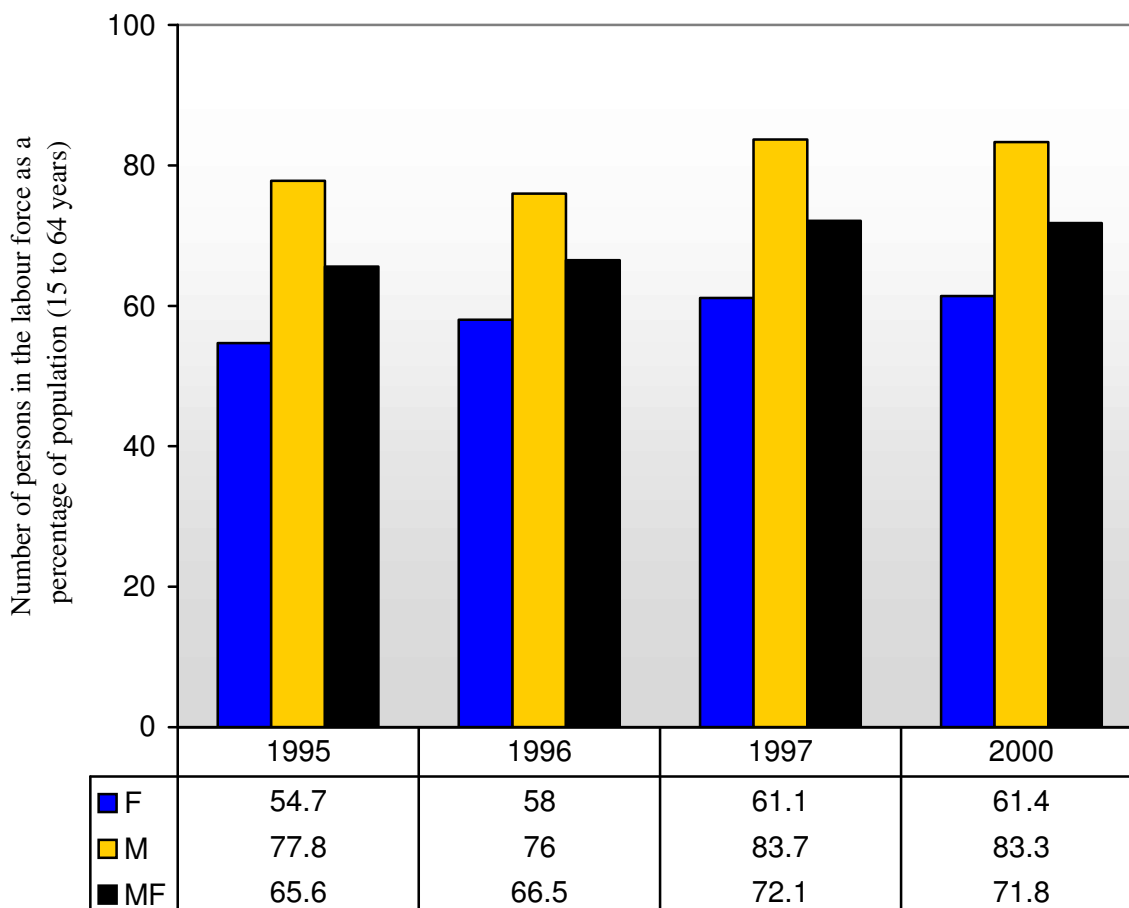


Bolivia - Labour Force Participation Rate (KILM 1)



1. Source

ILO: 2003-2004 Key Indicators of the Labour Market (Geneva, 2003),

<http://www.ilo.org/kilm>

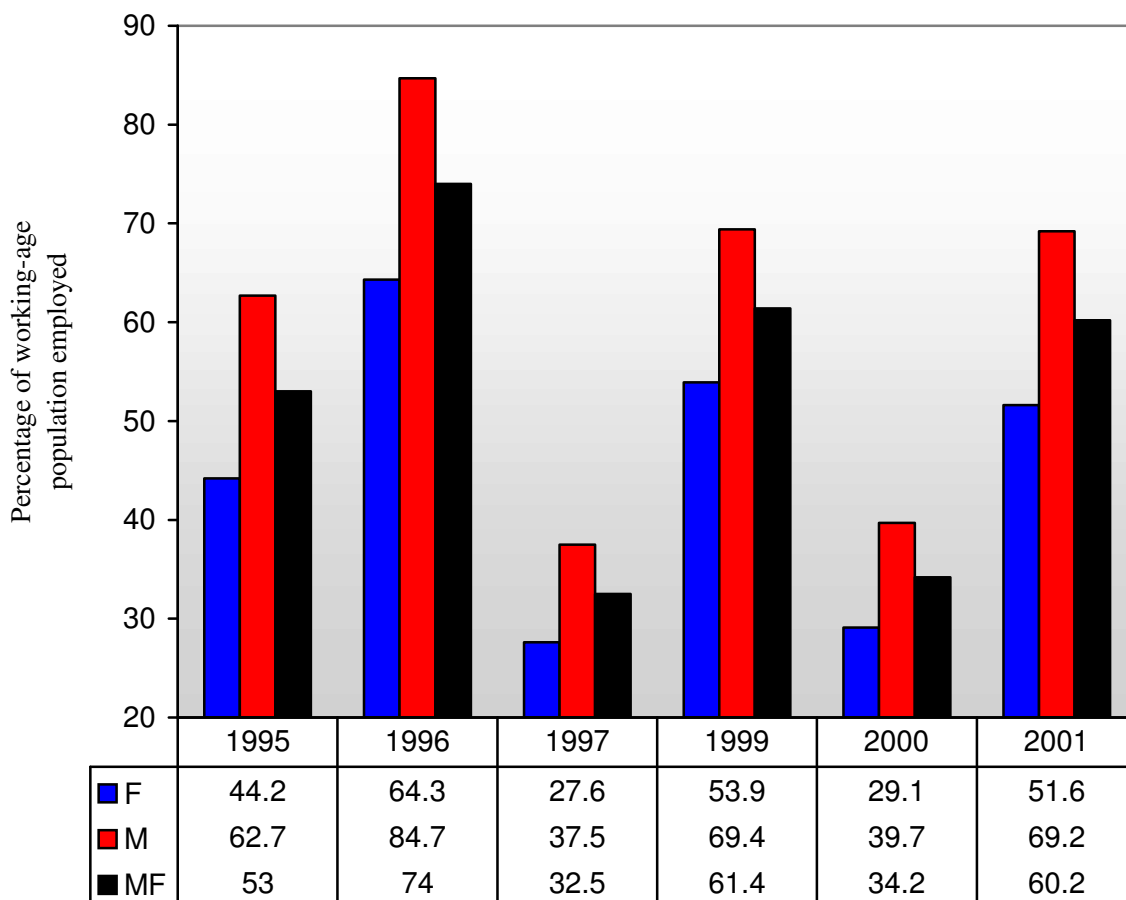
2. Type of source

HS Household or labour force survey

3. Symbols

MF Male and female, M Male, F Female

Bolivia - Employment-to-Population Ratio (KILM 2)



1. Source

ILO: 2003-2004 Key Indicators of the Labour Market (Geneva, 2003),
<http://www.ilo.org/kilm>

2. Type of source

HS Household or labour force survey

3. Coverage

TE Total employment (employees, employers, own-account workers, members of producers' cooperatives, contributing family members and workers not classifiable by status)

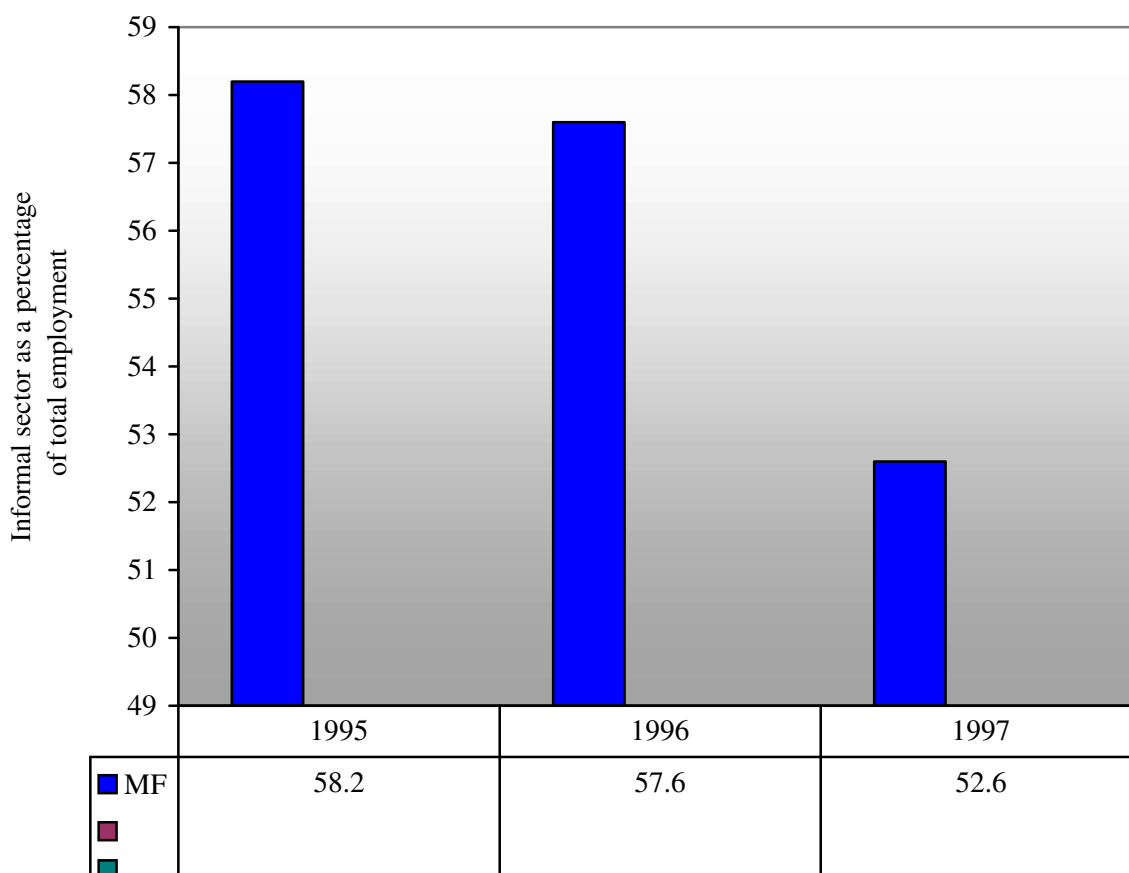
4. Age

The general age group is 15 years and over.

5. Symbols

MF Male and female, M Male, F, Female

Bolivia - Informal Sector Employment (KILM indicator 7d)
Previously KILM 7



1. Source

ILO: 2003-2004 Key Indicators of the Labour Market (Geneva, 2003),
<http://www.ilo.org/kilm>

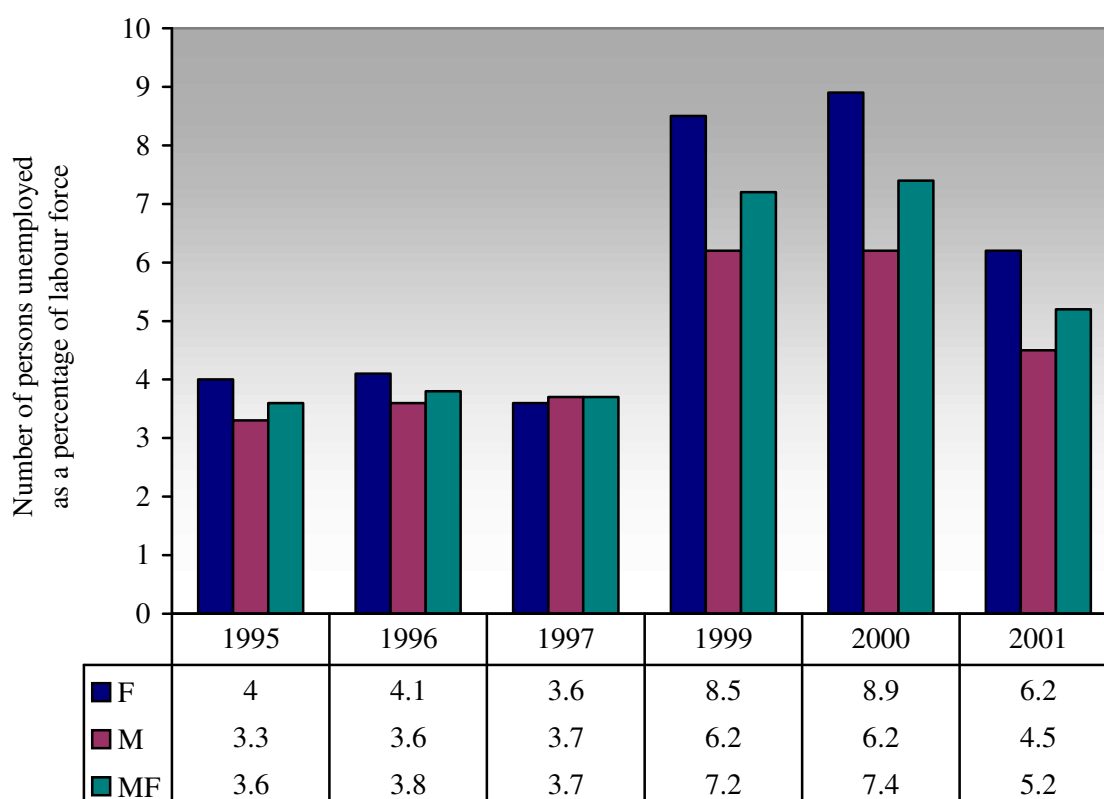
2. Coverage

Geographical: All urban areas are covered unless otherwise noted.
Industrial: All industries are covered unless otherwise noted.

3. Symbols

MF Male and female, M Male, F Female

Bolivia - Unemployment Rate (KILM 8a)



1. Source

ILO: 2003-2004 Key Indicators of the Labour Market (Geneva, 2003),
<http://www.ilo.org/kilm>

2. Type of source

HS Household or labour force survey

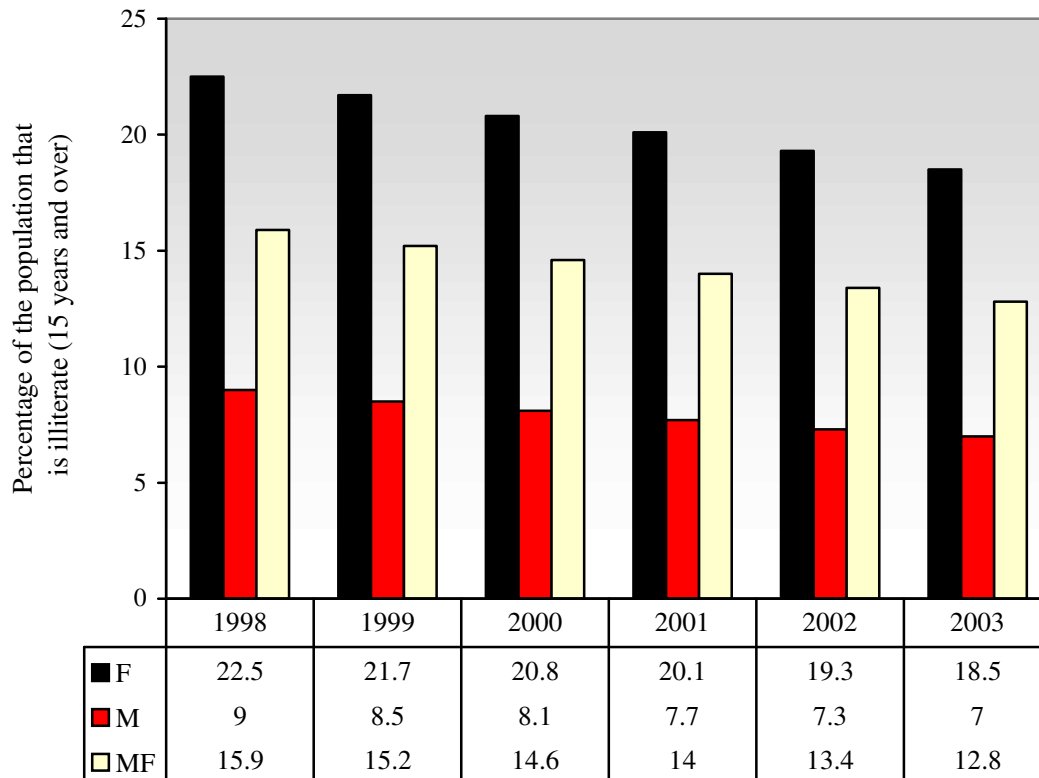
3. Coverage

TLF Total Labour Force

4. Symbols

MF Male and female, M Male, F Female

Bolivia - Adult Illiteracy Rate (KILM 14c)
Previously KILM 14e



1. Source

ILO: 2003-2004 Key Indicators of the Labour Market (Geneva, 2003),
<http://www.ilo.org/kilm>

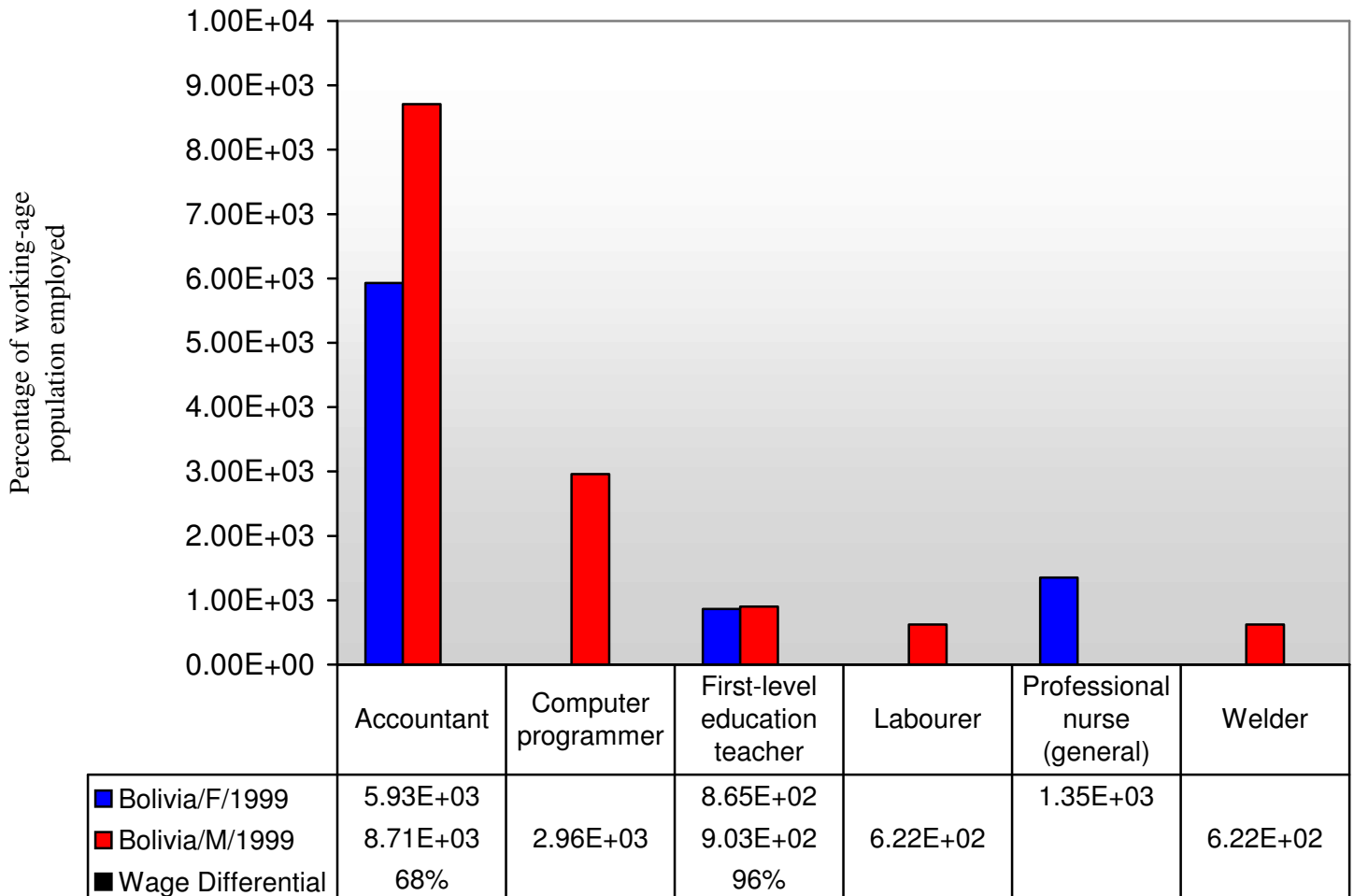
2. Symbols

M Male, F Female

3. Additional notes

The data from 1995 to 2001 are UNESCO literacy estimates as assessed in February 2000, based on statistics collected during national population censuses.

**BOLIVIA – Wages in National Currency for
Selected Occupations (KILM 16a)
Data year: 1999**



1. Source

ILO: 2003-2004 Key Indicators of the Labour Market (Geneva, 2003), <http://www.ilo.org/kilm>

2. Type of source

DA Labour-related establishment survey

3. Symbols

MF Male and female, M Male, F, Female

4. Note on formula

Wage differential = (F/M)*100